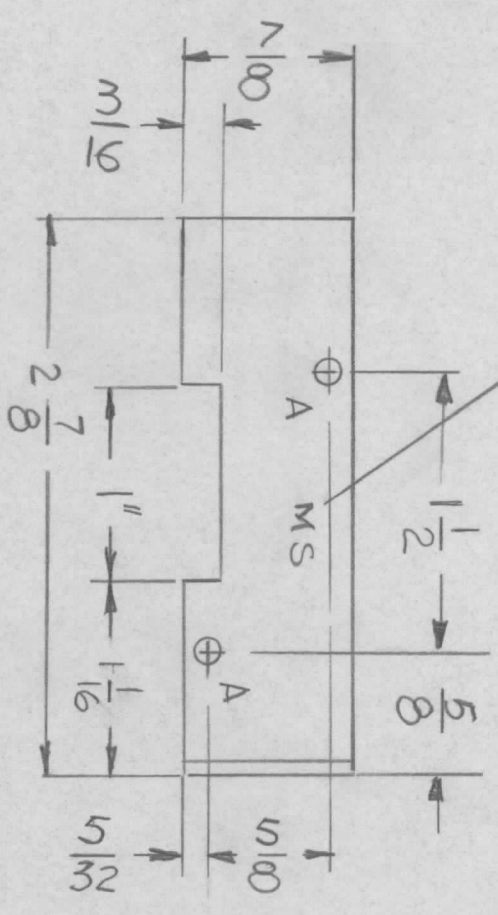
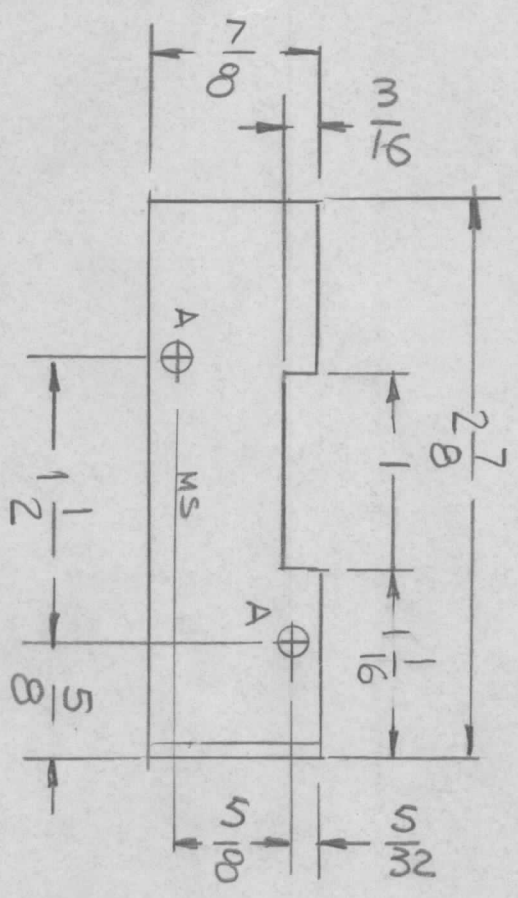
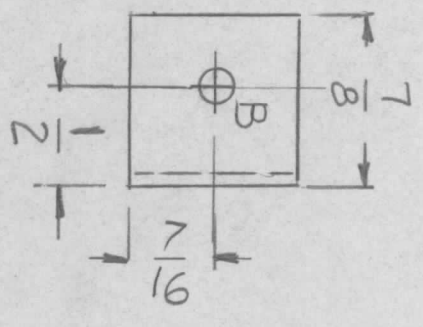


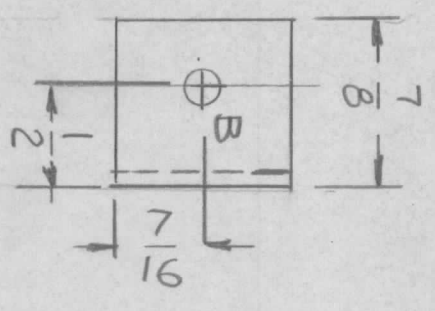
MARK TMC P/NO  
1/8 HIGH GOTHIC WITH LATEST  
REV. LETTER



MS 6640-1



MS 6640-2



REVISIONS							
EMN. NO.	DRAFT	CHKD	ZONE	LTR	DESCRIPTION	DATE	APPROVED
				X	EXP. RELEASE	9.10.75	
				Ø	ORIGINAL RELEASE FOR PRODUCTION	9/15/75	

HOLE :  
A - 9/64 DIA 2 REQ.  
B - 11/64 DIA 1 REQ.

UNLESS OTHERWISE SPECIFIED:  
1. USE MATERIAL THICKNESS FOR MAXIMUM RADIUS ON ALL BENDS.  
2. ALL ANGULAR BENDS 90 DEGREES.  
3. REMOVE ALL BURRS AND SHARP EDGES.

1 ea.	TOC-24-2	AX5202
QTY / UNIT MODEL USED ON ASSY NO.		
APPLICATION		
CODE		

NOTICE TO PERSONS RECEIVING THIS DRAWING  
THE TECHNICAL MATERIEL CORPORATION claims proprietary right in the material disclosed hereon. This drawing is issued in confidence for engineering information only and may not be reproduced or used to manufacture anything shown hereon without permission from THE TECHNICAL MATERIEL CORPORATION to the user. This drawing is loaned for mutual assistance and is subject to recall at any time.

REQ'D ITEM	PART NUMBER	DESCRIPTION	SYM.
		LIST OF MATERIAL	

THE TECHNICAL MATERIEL CORP.  
MAMARONECK, NEW YORK

BRACKET MTG RELAY

UNLESS OTHERWISE SPECIFIED DIMENSIONS ARE IN INCHES AND INCLUDE CHEMICALLY APPLIED OR PLATED FINISHES		FINAL APPROVAL		DATE	
DECIMALS	FRACTIONS	MECH. DES.		9/15/75	
.X ± .05	1/64	ELECT. DES.		DATE	
.XX ± .01	ANGLES	CHECKED		DATE	
.XXX ± .005	0° - 30'	DRAWN		DATE	
MATERIAL - 064 THK		G.D.L.		9/15/75	
ALUM 5052-H32		SCALE		1:1	
FINISH S404		SIZE		B	
VEL. IRIDITE		CODE IDENT. NO.		82679	
		DWG NO.		MS 6640	
		SHEET		OF	
		ISSUE		Ø	