

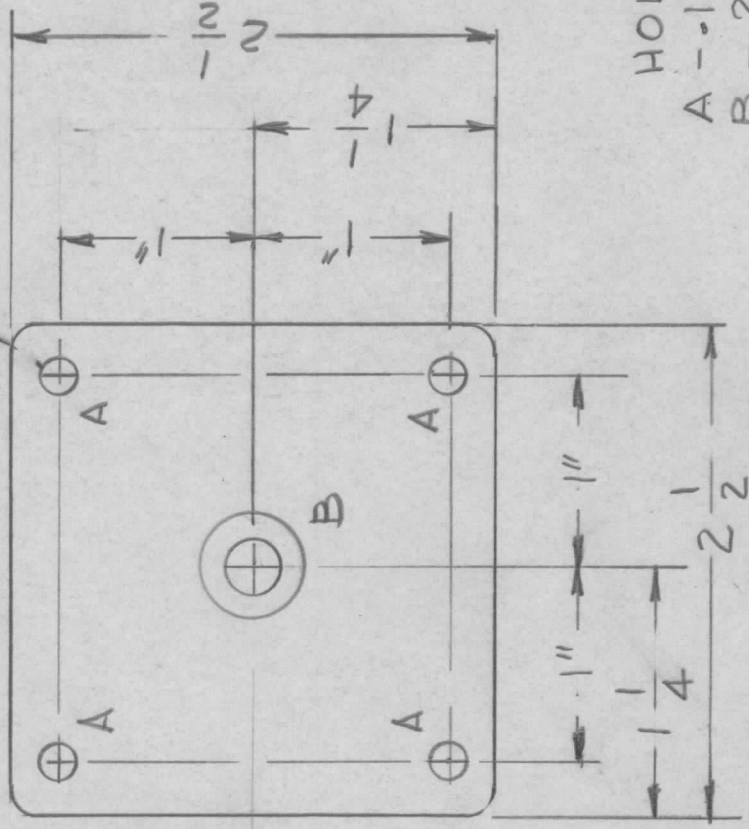
REVISIONS

APPLICATION

QTY	MODEL USED ON	ASSY NO.	LTR	DESCRIPTION	DATE	E.M.N.NO	DRAFT	CHKD	APPD
12	SYM 5203			EXP. RELEASE	1-10-77				*

1/8R TYP  
4 CORNER

NT 1A22



HOLES:  
A - .128 DIA 4 REQ.  
B - .270 DIA C'SHK 82°  
TO .520 DIA

FINISH NOTES:

1. S404 - IRIDITE 14-2 AL-COAT.
2. S114 - ZINC CHROMATE PRIMER } FRONT AND EDGES ONLY
- 3 - S521 TMC GRAY TEXTURED VINYL PAINT

REQ'D	ITEM	PART NUMBER	DESCRIPTION	SYM.
LIST OF MATERIAL				
THE TECHNICAL MATERIEL CORP. MAMARONECK, NEW YORK				
PLATE MTG FEET				

FINAL APPROVAL	DATE
MECH. DES.	DATE
ELECT. DES.	DATE
CHECKED	DATE
DRAWN	DATE

UNLESS OTHERWISE SPECIFIED DIMENSIONS ARE IN INCHES AND INCLUDE CHEMICALLY APPLIED OR PLATED FINISHES	DECIMALS	FRACTIONS
.X ± .05	TOLS.	1/64
.XX ± .01	ANGLES	0° - 30'
.XXX ± .005		
MATERIAL	1/8 THK	
ALUM	5052-H32	
FINISH	SEE NOTE	

SIZE	CODE IDENT. NO.	DWG NO.	ISSUE
A	82679	MS 6639	Ø
SCALE	1:1	SHEET	OF

NOTICE TO PERSONS RECEIVING THIS DRAWING  
THE TECHNICAL MATERIEL CORPORATION claims proprietary right in the material disclosed hereon. This drawing is issued in confidence for engineering information only and may not be reproduced or used to manufacture anything shown hereon without permission from THE TECHNICAL MATERIEL CORPORATION to the user. This drawing is loaned for mutual assistance and is subject to recall at any time.