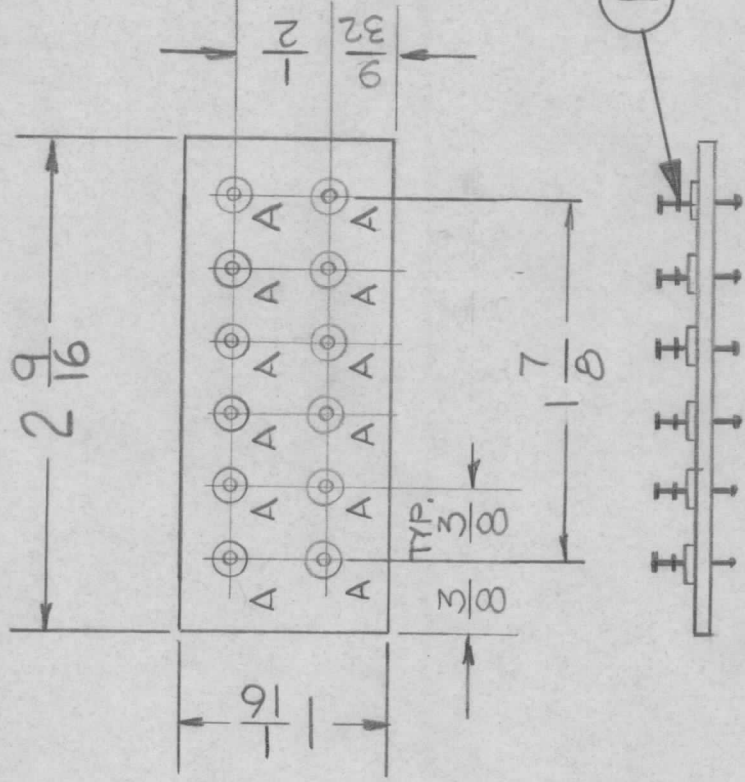


APPLICATION

REVISIONS

MODEL USED ON	ASS'Y NO.	LTR	DESCRIPTION	DATE	E.M.N.NO	DRAFT	CHKD	APPD
GPR110 (K17404)	A4997	X	EXP. RELEASE	3-14-75		F.I.		
			NO LONGER REQ. NOTE ADD.					
			Original Release	1-19-77		F.I.		*



A - .148 DIA. ± .002 - 12 REQ.

NO LONGER REQ.

REF: LD 3032

REQ'D	ITEM	PART NUMBER	DESCRIPTION	SYM.
12	1	TE193-B7-S9	TERMINAL; INSULATED FEEDTHROUGH	
LIST OF MATERIAL				
THE TECHNICAL MATERIEL CORP. MAMARONECK, NEW YORK				
PLATE, IF INTERFACING				

SIZE	CODE IDENT. NO.	DWG NO.	ISSUE
A	82679	MS6619	Ø
SCALE	1:1	SHEET	OF

UNLESS OTHERWISE SPECIFIED DIMENSIONS ARE IN INCHES AND INCLUDE CHEMICALLY APPLIED OR PLATED FINISHES

DECIMALS FRACTIONS
X ± .05 TOLS. 1/64
.XX ± .01 ANGLES 0°-30'
.XXX ± .005

MATERIAL .032 COPPER
FINISH NATURAL

NOTICE TO PERSONS RECEIVING THIS DRAWING
THE TECHNICAL MATERIEL CORPORATION claims proprietary right in the material disclosed hereon. This drawing is issued in confidence for engineering information only and may not be reproduced or used to manufacture anything shown hereon without permission from THE TECHNICAL MATERIEL CORPORATION to the user. This drawing is loaned for mutual assistance and is subject to recall at any time.