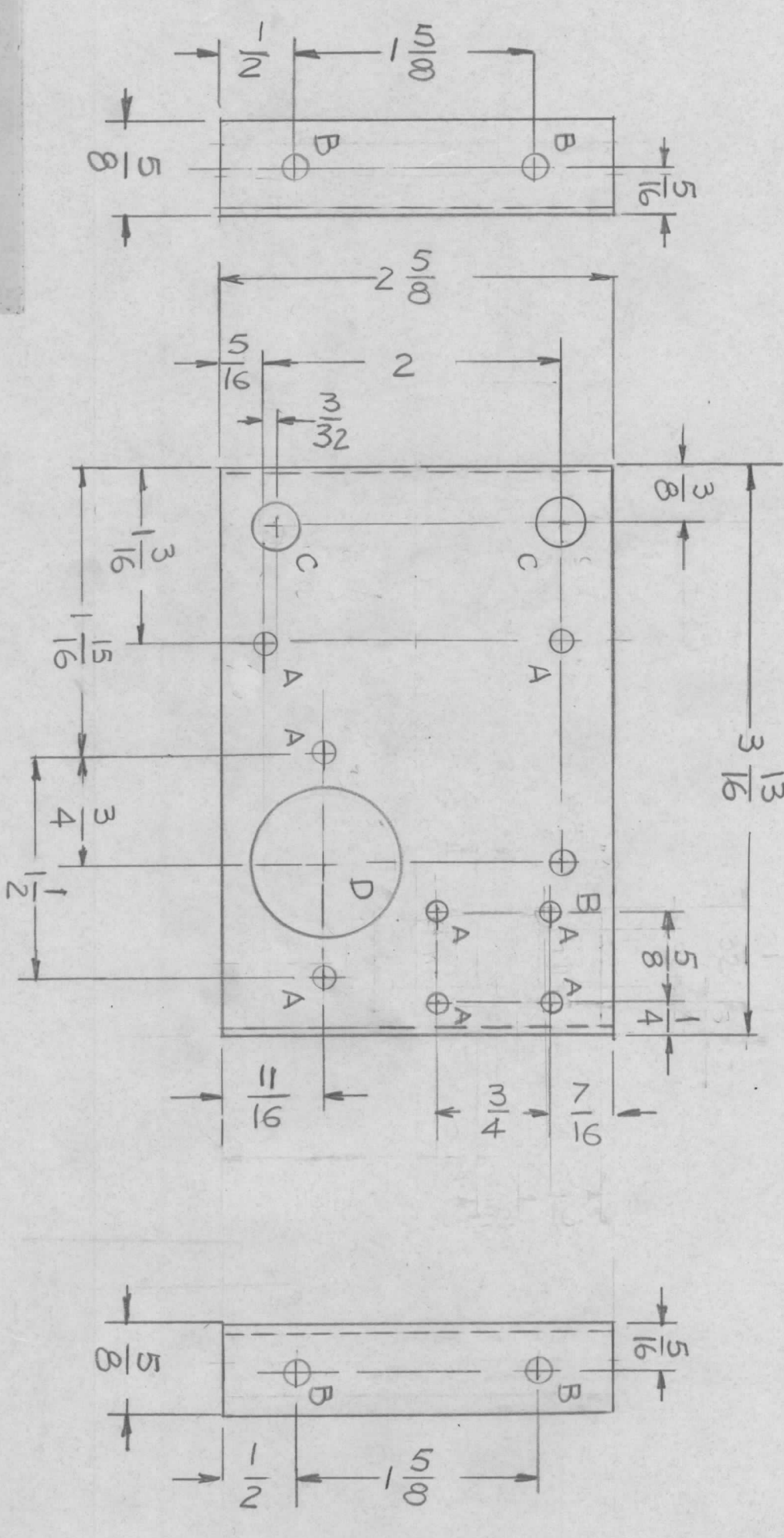


REVISIONS				DATE	APPROVED
EM.N. NO.	DRAFT	CHKD	ZONE	LTR	DESCRIPTION
				X	EXP. RELEASE
				Ø	ORIGINAL RELEASE FOR PRODUCTION
					3/4/75



HOLES:

- A - 9/64 DIA 8 REQ.
- B - 11/64 DIA 5 REQ.
- C - 5/16 DIA 2 REQ
- D - 1" DIA 1 REQ

- UNLESS OTHERWISE SPECIFIED:
1. USE MATERIAL THICKNESS FOR MAXIMUM RADIUS ON ALL BENDS.
 2. ALL ANGULAR BENDS 90 DEGREES.
 3. REMOVE ALL BURRS AND SHARP EDGES.

QTY / UNIT	1	MODEL USED ON	KIT-403	ASS'Y NO.	
APPLICATION		CODE			

NOTICE TO PERSONS RECEIVING THIS DRAWING
 THE TECHNICAL MATERIEL CORPORATION claims proprietary right in the material disclosed herein. This drawing is issued in confidence for engineering information only and may not be reproduced or used to manufacture anything shown herein without permission from THE TECHNICAL MATERIEL CORPORATION to the user. This drawing is loaned for mutual assistance and is subject to recall at any time.

REQ'D ITEM	PART NUMBER	DESCRIPTION	SYM.
		BRACKET MTG	

UNLESS OTHERWISE SPECIFIED DIMENSIONS ARE IN INCHES AND INCLUDE CHEMICALLY APPLIED OR PLATED FINISHES	FINAL APPROVAL MECH. DES. DATE 3/2/75	DATE 3/2/75
DECIMALS .X ± .05 .XX ± .01 .XXX ± .005	FRACTIONS 1/64 ANGLES 0°-30'	DATE 3/4/75
MATERIAL ALUM. 5052-H32	ELECT. DES. CHECKED DRAWN	DATE 2-5-75
FINISH YEL IRIDITE	G.D.L.	

SIZE	CODE IDENT. NO.	DWG. NO.	ISSUE
B	82679	MS6605	Ø
SCALE	1:1	SHEET	OF