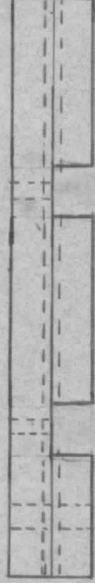


REVISIONS

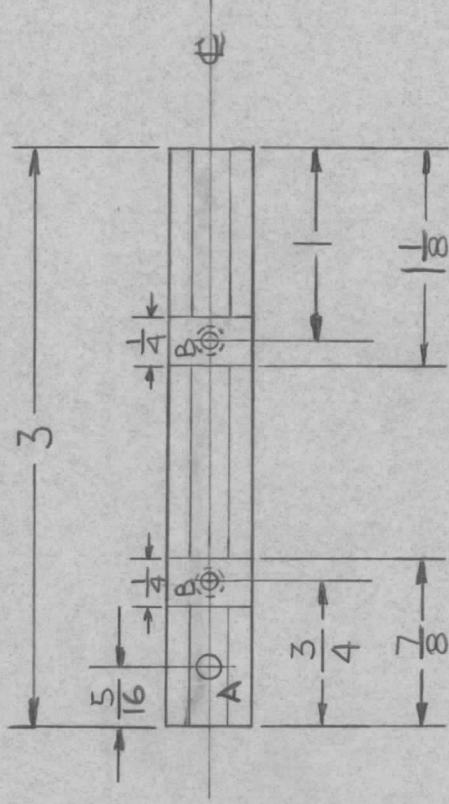
APPLICATION

QTY	MODEL USED ON	ASS'Y NO.	LTR	DESCRIPTION	DATE	E.M.N.NO	DRAFT	CHKD	APPD
1	A5611		X	EXP RELEASE	10-2-74				
			Ø	ORIG. RELEASE FOR PROD	3/13/75		CL		

SIDE VIEW



TOP VIEW



HOLES

A - 11/64

B - #632 TAP

NOTE:

MODIFY TE0832 AE 3.00HG
AS SHOWN

REQ'D	ITEM	PART NUMBER	DESCRIPTION	SYM.
1			LIST OF MATERIAL	
<p>UNLESS OTHERWISE SPECIFIED DIMENSIONS ARE IN INCHES AND INCLUDE CHEMICALLY APPLIED OR PLATED FINISHES</p> <p>DECIMALS FRACTIONS</p> <p>.X ± .05 1/64</p> <p>.XX ± .01 TOLS. ANGLES</p> <p>.XXX ± .005 0°-30°</p>				
FINAL APPROVAL		DATE	THE TECHNICAL MATERIEL CORP.	
MECH. DES.		DATE	MAMARONECK, NEW YORK	
ELECT. DES.		DATE	OUTPUT COUPLER FEED THRU	
CHECKED		DATE	SIZE	CODE IDENT. NO.
F. IANNUZZI		12-14-74	A	82679
DRAWN		DATE	SCALE	DWG NO.
F. IANNUZZI		6/24/74	1:1	MS 6575
FINISH				ISSUE
				Ø

NOTICE TO PERSONS RECEIVING THIS DRAWING
THE TECHNICAL MATERIEL CORPORATION claims proprietary right in the material disclosed hereon. This drawing is issued in confidence for engineering information only and may not be reproduced or used to manufacture anything shown hereon without permission from THE TECHNICAL MATERIEL CORPORATION to the user. This drawing is loaned for mutual assistance and is subject to recall at any time.