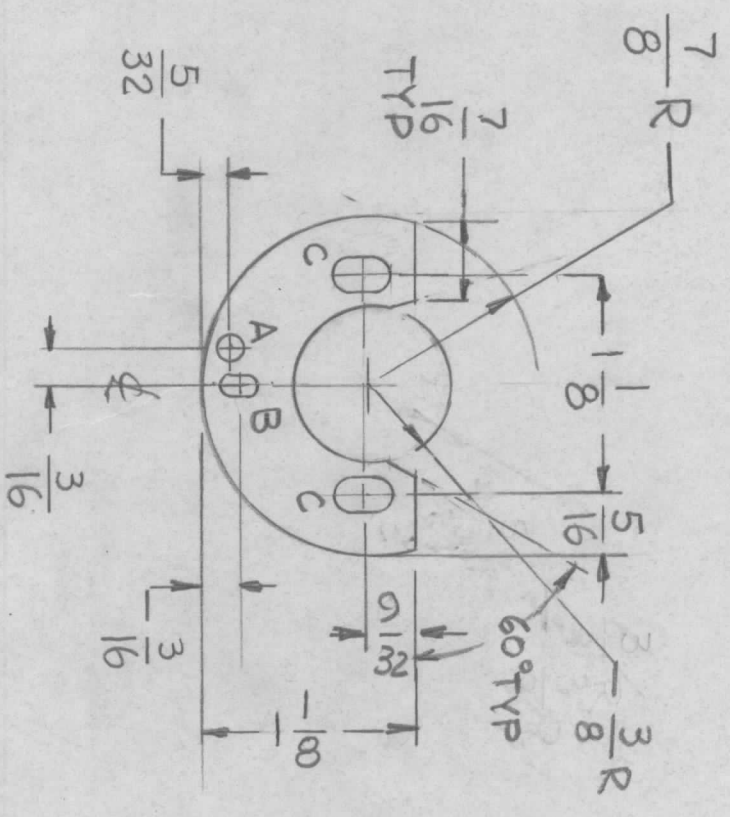


REVISIONS							
EM.N. NO.	DRAFT	CHKD	ZONE	LTR	DESCRIPTION	DATE	APPROVED
				X	EXP. RELEASE	10-2-74	
			Ø		ORIGINAL RELEASE FOR PRODUCTION	3-15-75	



- HOLEES
- A - 9/64 DIA (1REQ)
 - B - 1/8 x 3/16 SLOT (1REQ)
 - C - 3/16 x 5/16 (2REQ)

QTY / UNIT	1	MODEL USED ON	TMA-1K	ASS'Y NO.	BMA-520
APPLICATION		CODE			

NOTICE TO PERSONS RECEIVING THIS DRAWING
 THE TECHNICAL MATERIEL CORPORATION claims proprietary right in the material disclosed hereon. This drawing is issued in confidence for engineering information only and may not be reproduced or used to manufacture anything shown hereon without permission from THE TECHNICAL MATERIEL CORPORATION to the user. This drawing is loaned for mutual assistance and is subject to recall at any time.

DECIMALS	X ± .05	TOLS.	FRACTIONS	1/64
	.XX ± .01		ANGLES	0° - 30'
	.XXX ± .005			
MATERIAL	.063 THK ALUM 5052-H32			
FINISH	S404 YEL IRIDITE			

FINAL APPROVAL	<i>[Signature]</i>	DATE	5/13/72
MECH. DES.	F. IANNUZZI	DATE	2-7-75
ELECT. DES.		DATE	
CHECKED	E. IANNUZZI	DATE	12/14/74
DRAWN	G.D.L.	DATE	7-27-74

LIST OF MATERIAL

THE TECHNICAL MATERIEL CORP.
 MAMARONECK, NEW YORK

SIZE	B	CODE IDENT. NO.	82679	DWG NO.	MS 6573	ISSUE	Ø
SCALE	1:1	SHEET		OF			