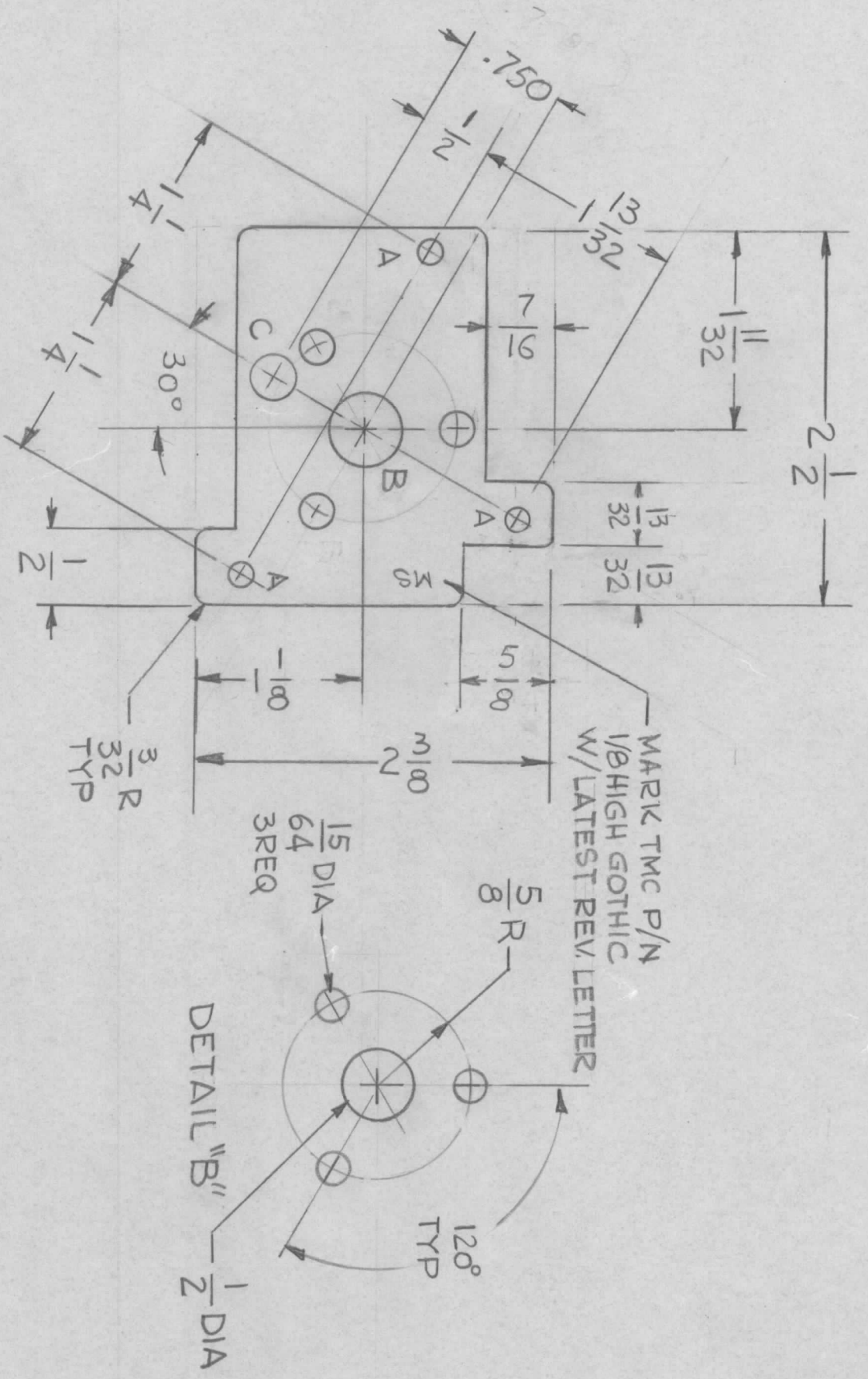


REVISIONS				DATE	APPROVED
EMN NO.	DRAFT	CHKD	ZONE	LTR	DESCRIPTION
				X	EXP. RELEASE
				X2	DIM 5/B WAS 1/4 - 13/32 WAS 5/16 & 13/32 WAS 1/2 .750 WAS .708
				Ø	ORIGINAL RELEASE FOR PRODUCTION
					3-13-75



HOLES	DESCRIPTION	REQ
A	11/64 DIA	3
B	SEE DETAIL	1
C	5/16 DIA	1

REQ'D ITEM	PART NUMBER	DESCRIPTION	SYM.
		LIST OF MATERIAL	

FINAL APPROVAL	MECH. DES.	ELECT. DES.	DATE
<i>[Signature]</i>	F. IANNUZZI		2-7-75
			5-6-74

QTY / UNIT	1	MODEL USED ON	TMA IK	ASS'Y NO.	AX782
APPLICATION					
CODE					

DECIMALS	X ± .05	TOLS.	FRACTIONS	1/64
	.XX ± .01		ANGLES	0° - 30'
	.XXX ± .005			
MATERIAL 1/8 THK ALUM 5052-H32				
FINISH S404 YEL IRIDITE				

SCALE	1 : 1	SHEET	OF
SIZE	B	CODE IDENT. NO.	82679
		DWG NO.	MS 6550
		ISSUE	Ø

THE TECHNICAL MATERIEL CORP.
MAMARONECK, NEW YORK
REAR PLATE MTG MOTOR

NOTICE TO PERSONS RECEIVING THIS DRAWING
THE TECHNICAL MATERIEL CORPORATION claims proprietary right in the material disclosed hereon. This drawing is issued in confidence for engineering information only and may not be reproduced or used to manufacture anything shown hereon without permission from THE TECHNICAL MATERIEL CORPORATION to the user. This drawing is loaned for mutual assistance and is subject to recall at any time.