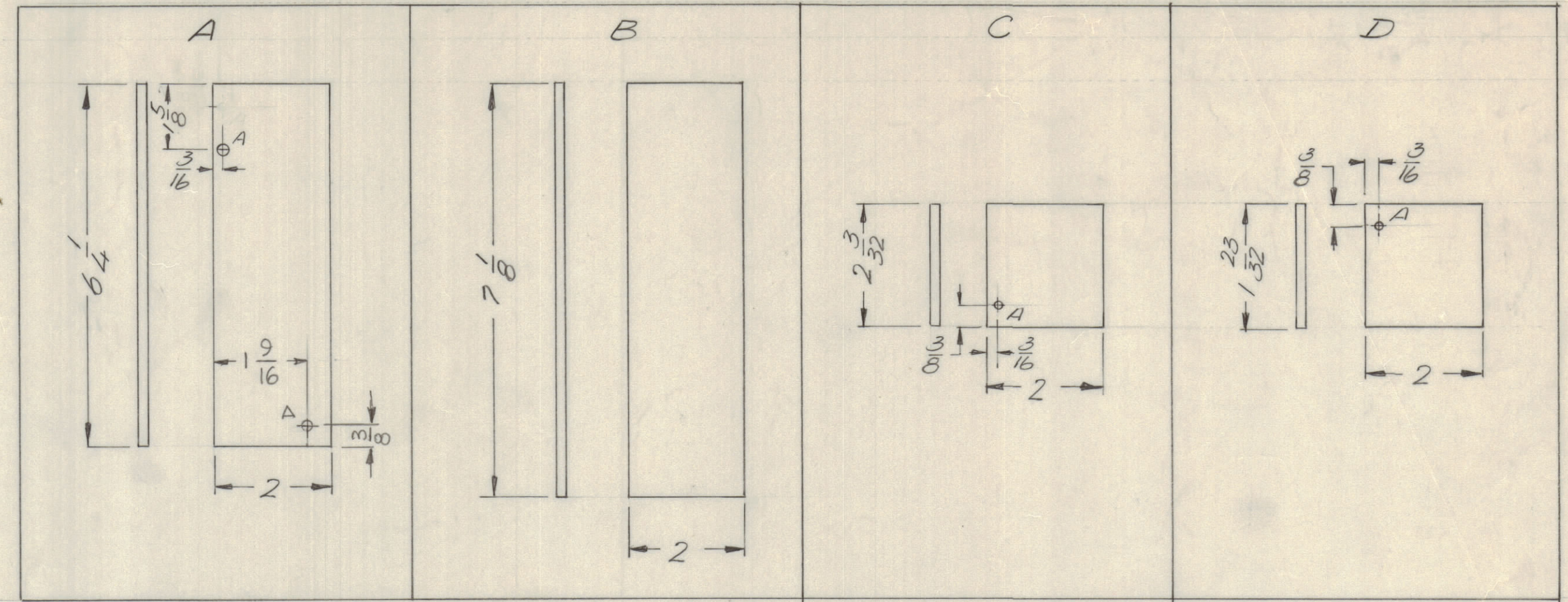
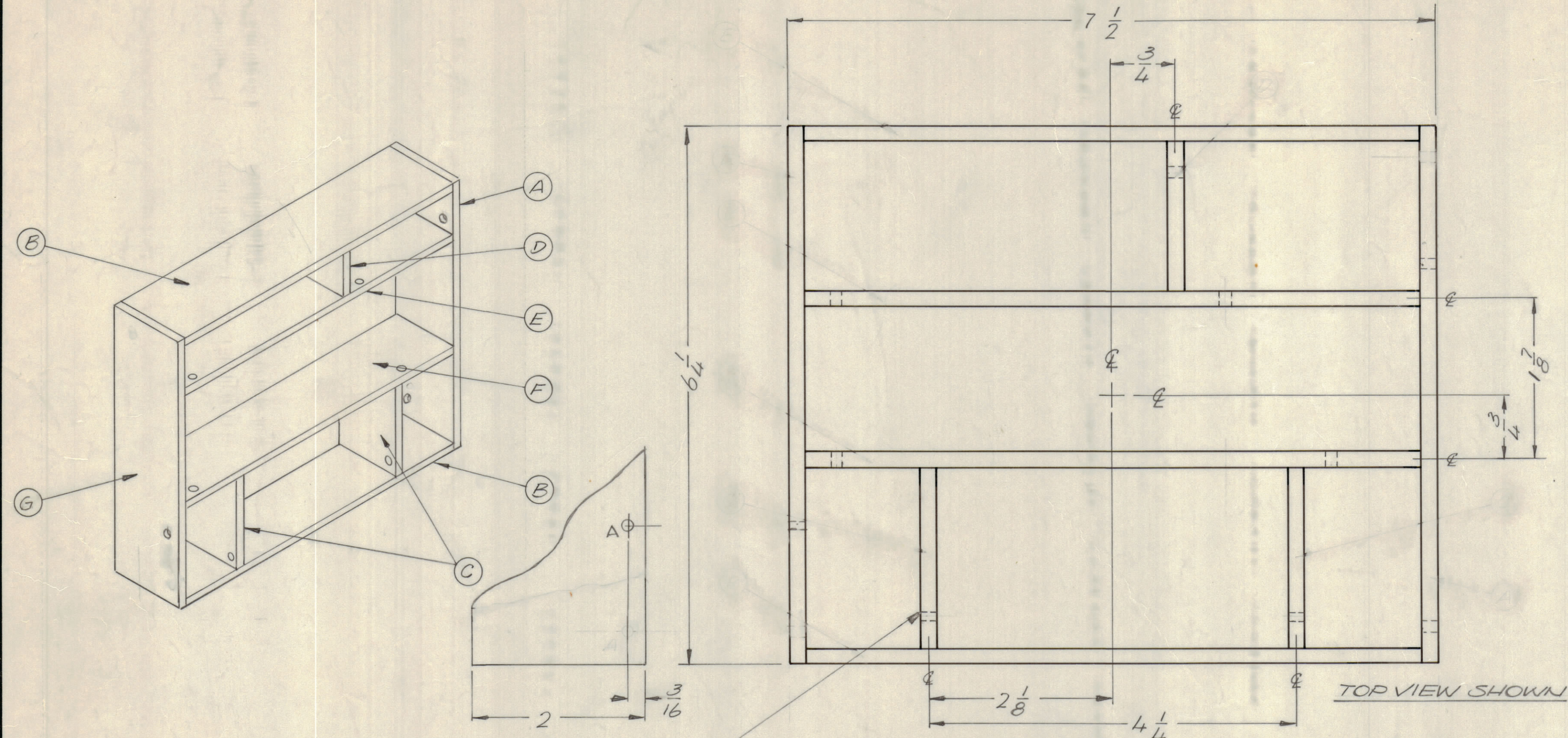
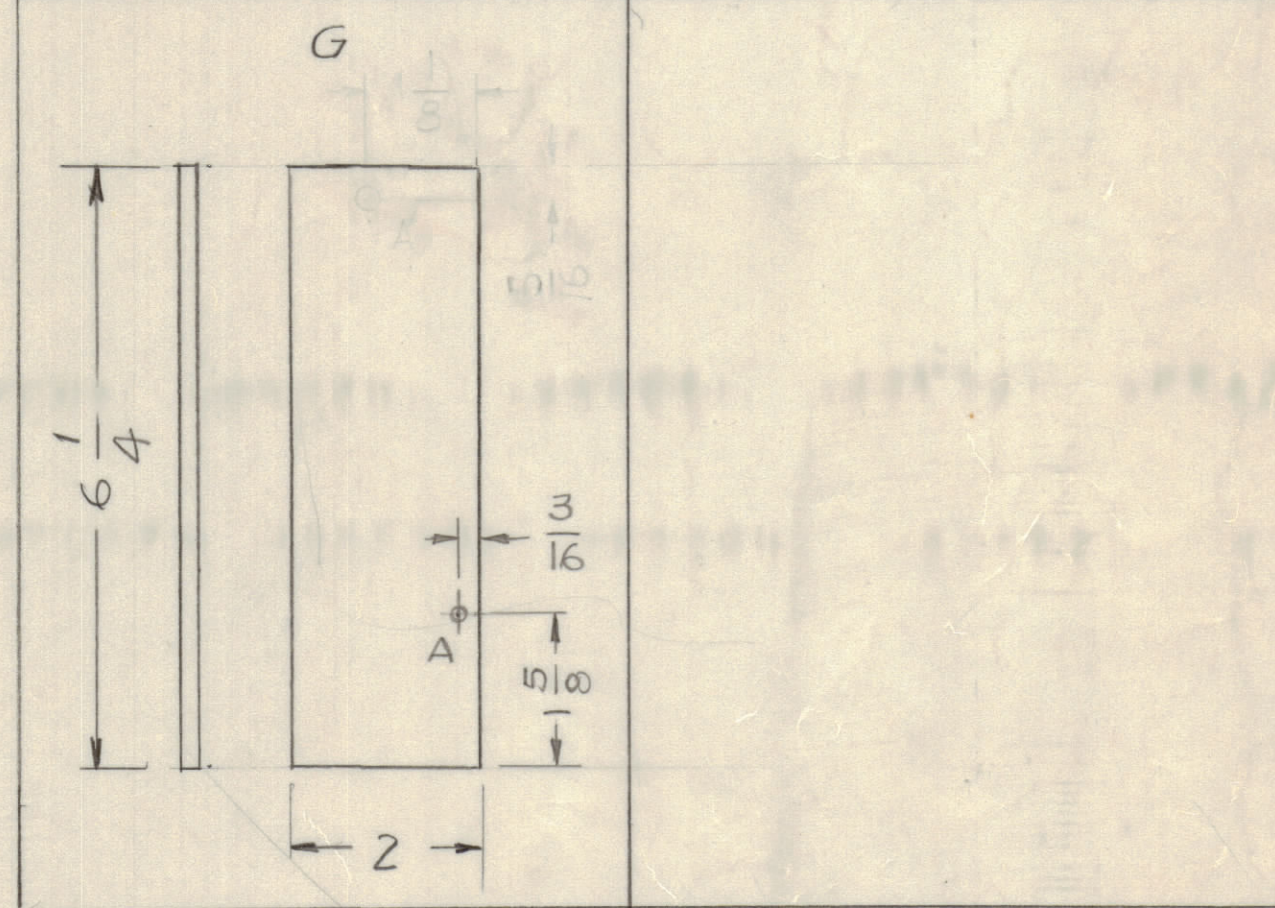
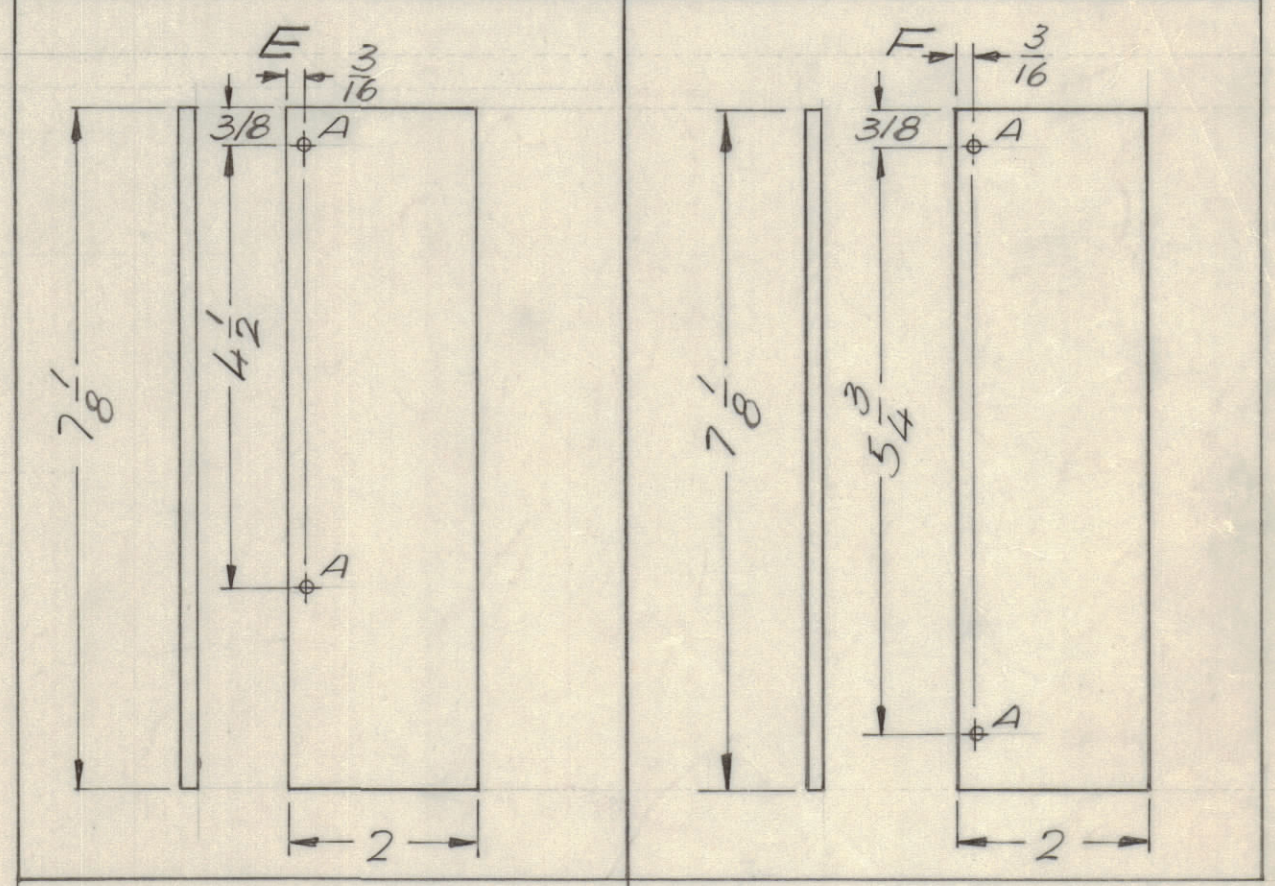


REVISIONS							
E.M.N.O	DRAFT	CHKD	ZONE	LTR	DESCRIPTION	DATE	APPROVED
				X2	"G" DETAIL ADDED - ON ST. 2 ONE F. HOLE ADD.		
				X3	SHEET (2) ONE (1) "C" HOLE ADDED	11-13-75	
				X4	TO DETAIL "A" ONE "A" HOLE ADD TO DETAIL "G" HOLE DEL.	6-2-76	
					ORIGINAL RELEASE FOR PRODUCTION	1-26-77	*

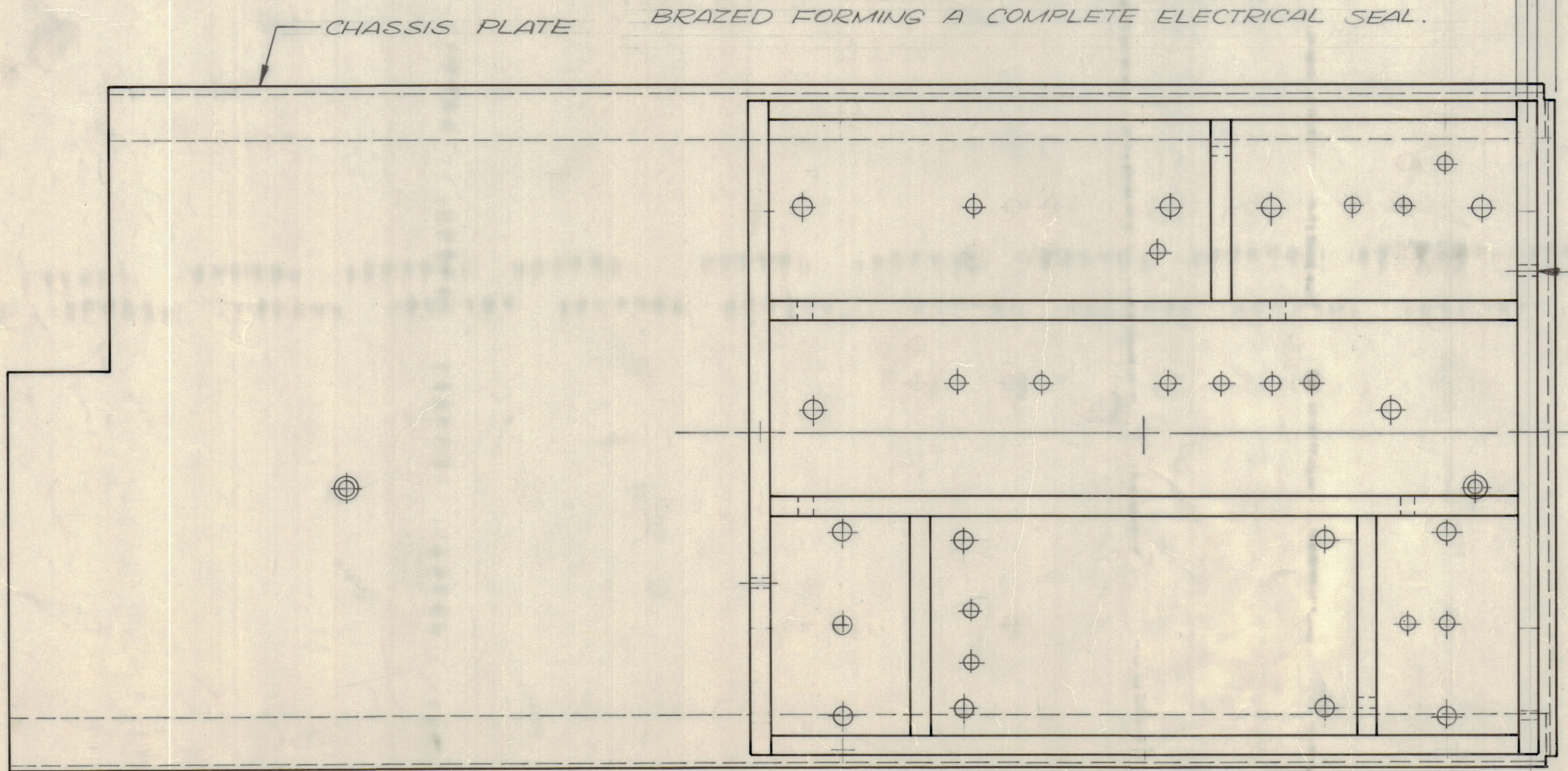


6061-T6
 ALL PIECES
 MATERIAL - 6061-T6 ALUM. 3/16 THK
 FINISH - S404 YEL IRIDITE
 A HOLES - .133 DIA.
 PIECES REQUIRED FOR ONE HOUSING

A	2
B	2
C	2
D	1
E	1
F	1
G	1



ASSEMBLE PIECES A THRU F AS SHOWN NOTING POSITIONS OF A HOLES. ALL A HOLES MUST BE LOCATED AS SHOWN & 3/16 FROM TOP OF ASSY. ALL BUTTING EDGES TO BE ALUMINUM DIPPED BRAZED FORMING A COMPLETE ELECTRICAL SEAL.



LOCATE HF OSC. HOUSING ABOUT CHASSIS PLATE AS SHOWN.
 MOUNT ITEM 1 IN ALL A HOLES AFTER IRIDITE & BRAZING PROCESS (HOUSING ONLY)
 MACHINING TO BE DONE AFTER ALL BRAZING.

QTY. REQ.	ITEM	PART NO.	DESCRIPTION	SYMBOL
	1	EY100-7	EYELET	A

FINAL APPROVAL		DATE		THE TECHNICAL MATERIEL CORP.	
E. BUDETTI		11/10/77		MAMARONECK, NEW YORK	
MECH. DES.		DATE		SIDE PLATE FRONT END MTG. PLATE (HF. OSCILLATOR HOUSING)	
ELECT. DES.		DATE		SIZE CODE IDENT NO. DWG NO.	
CHECKED		DATE		D 82679 MS 6493	
DRAWN		DATE		ISSUE	
GE		8/27/73		0	
MATERIAL		AS NOTED		SCALE 1:1	
FINISH		AS NOTED		SHEET 1 OF 2	

QTY / UNIT	MODEL USED ON	ASSY NO.
1	GPR110	BMA516
APPLICATION		
CODE		

NOTICE TO PERSONS RECEIVING THIS DRAWING
 THE TECHNICAL MATERIEL CORPORATION claims proprietary right in the material disclosed herein. This drawing is issued in confidence for engineering information only and may not be reproduced or used to manufacture anything shown hereon without permission from THE TECHNICAL MATERIEL CORPORATION to the user. This drawing is loaned for mutual assistance and is subject to recall at any time.

