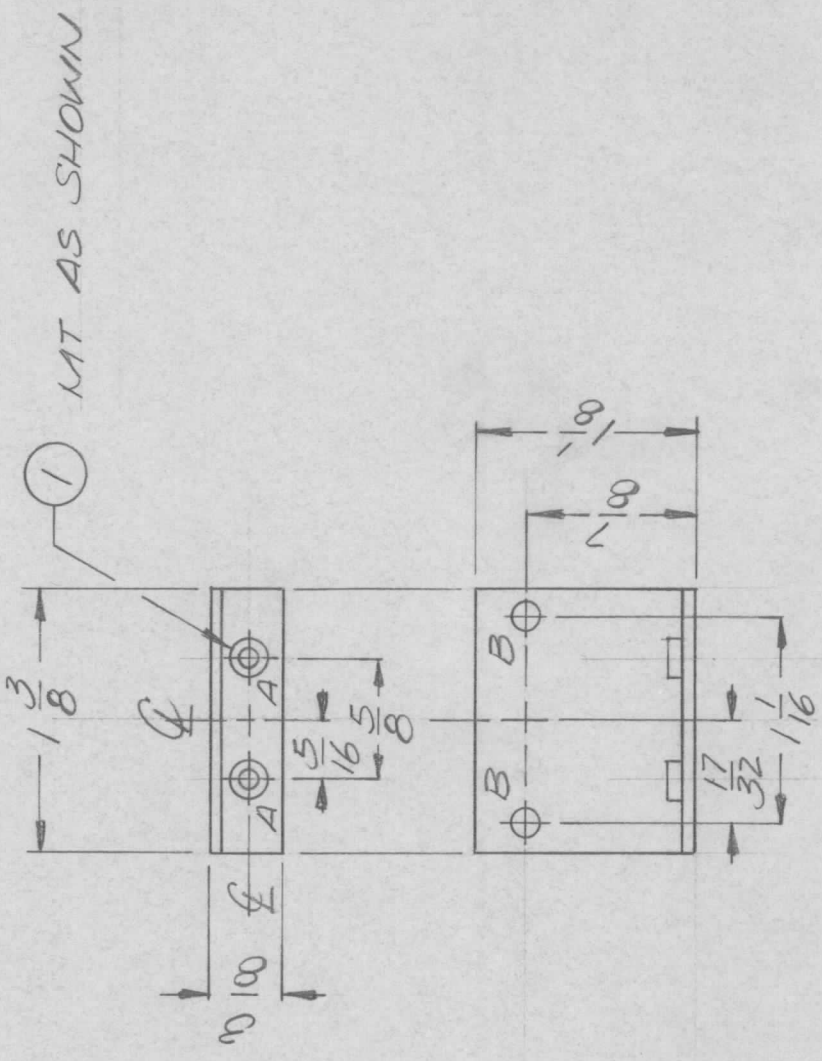


APPLICATION

REVISIONS

| | | | | | | | | | |
|-----|---------------|----------|-----|-----------------------|---------|----------|-------|------|------|
| QTY | MODEL USED ON | ASSY NO. | LTR | DESCRIPTION | DATE | E.M.N.NO | DRAFT | CHKD | APPD |
| 1 | KIT 375 | | Ø | ORIG RELEASE FOR PROD | 3/29/73 | | Q. | | |



HOLE A - .161 - .164 DIA - 2 REQ.
 HOLE B - .9/64 DIA. - 2 REQ.

| | | | | | |
|---|---|-----------------|------------------------------|-------------|------|
| 2 | 1 | KIT290440 | NUT, PLAIN ROUND | SYM. | |
| REQ'D ITEM | | | | DESCRIPTION | SYM. |
| F.B. | | | | | |
| FINAL APPROVAL | | DATE | LIST OF MATERIAL | | |
| <i>[Signature]</i> | | 19 MAR 73 | THE TECHNICAL MATERIEL CORP. | | |
| MECH. DES. | | DATE | MAMARONECK, NEW YORK | | |
| <i>[Signature]</i> | | 19 MAR 73 | RELAY MTG. BRACKET | | |
| ELECT. DES. | | DATE | | | |
| CHECKED | | DATE | | | |
| DRAWN | | DATE | | | |
| GE | | 3/16/73 | | | |
| UNLESS OTHERWISE SPECIFIED DIMENSIONS ARE IN INCHES AND INCLUDE CHEMICALLY APPLIED OR PLATED FINISHES | | SIZE | | | |
| DECIMALS | | A | | | |
| .X ± .05 | | CODE IDENT. NO. | | | |
| .XX ± .01 | | 82679 | | | |
| .XXX ± .005 | | DWG NO. | | | |
| FRACTIONS | | MS 6459 | | | |
| 1/64 | | SCALE | | | |
| ANGLES | | 1/01 | | | |
| 0° - 30° | | SHEET | | | |
| MATERIAL .051 ALUM | | OF | | | |
| 5052 H 32 | | | | | |
| FINISH S404 | | | | | |
| YEL IRIDITE | | | | | |

NOTICE TO PERSONS RECEIVING THIS DRAWING
 THE TECHNICAL MATERIEL CORPORATION claims proprietary right in the material disclosed hereon. This drawing is issued in confidence for engineering information only and may not be reproduced or used to manufacture anything shown hereon without permission from THE TECHNICAL MATERIEL CORPORATION to the user. This drawing is loaned for mutual assistance and is subject to recall at any time.