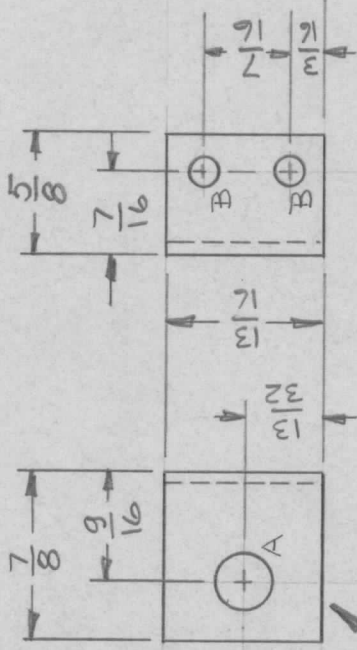


APPLICATION

REVISIONS

QTY	MODEL USED ON	ASS'Y NO.	LTR	DESCRIPTION	DATE	E.M.N.NO	DRAFT	CHKD	APPD
1	HFL(-)-10K/REV A	AX5167	Ø	ORIGINAL RELEASE FOR PRODUCTION	9/27/72		EP		
			A	DIMENSIONED HOLES	10-27-77	21584	PH	K.P. N.B.	



MARK TMC PART NUMBER
1/8 HIGH GOTHIC WITH LATEST
REVISION LETTER

HOLE	QTY	DESCRIPTION
A	1	5/16 DIA.
B	2	1/64 DIA.

UNLESS OTHERWISE SPECIFIED:

1. USE MATERIAL THICKNESS FOR MAXIMUM RADIUS ON ALL BENDS.
2. ALL ANGULAR BENDS 90 DEGREES.
3. REMOVE ALL BURRS AND SHARP EDGES.
4. MOUNT INSERTS AFTER FINISHING.

UNLESS OTHERWISE SPECIFIED
DIMENSIONS ARE IN INCHES
AND INCLUDE CHEMICALLY APPLIED
OR PLATED FINISHES

DECIMALS FRACTIONS
.X ± .05 TOLS. 1/64
.XX ± .01 ANGLES
.XXX ± .005 0° .30'

MATERIAL .064

ALUM 5052-H32

FINISH

S404 YEL IRID

REQ'D	ITEM	PART NUMBER	DESCRIPTION	SYM.
LIST OF MATERIAL				
FINAL APPROVAL	<i>JM</i>	DATE	THE TECHNICAL MATERIEL CORP.	
MECH. DES.	<i>JM</i>	22SEP72	MAMARONECK, NEW YORK	
ELECT. DES.		DATE	BRKLT, RES MTG	
CHECKED		DATE		
DRAWN	<i>JM</i>	22SEP72		
		DATE		
NOTICE TO PERSONS RECEIVING THIS DRAWING		CODE IDENT. NO.	DWG NO.	ISSUE
THE TECHNICAL MATERIEL CORPORATION claims proprietary right in the material disclosed hereon. This drawing is issued in confidence for engineering information only and may not be reproduced or used to manufacture anything shown hereon without permission from THE TECHNICAL MATERIEL CORPORATION to the user. This drawing is loaned for mutual assistance and is subject to recall at any time.		A	82679	A
		SIZE	SCALE	SHEET / OF
		A		MS6383 / 1