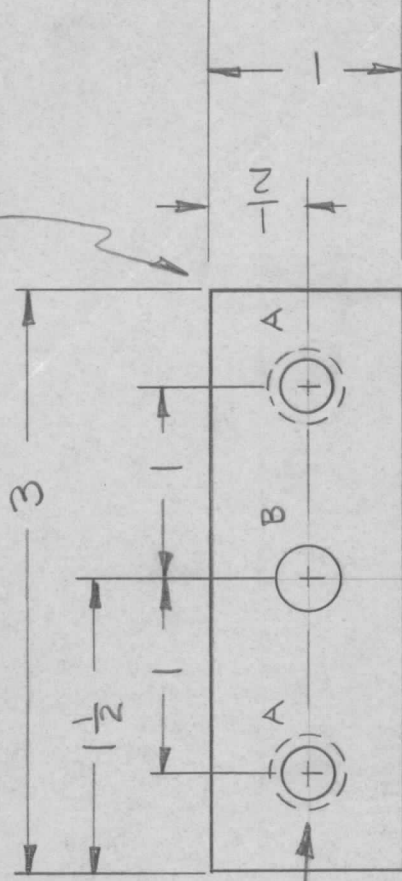


REVISIONS

APPLICATION

QTY	MODEL USED ON	ASS'Y NO.	LTR	DESCRIPTION	DATE	E.M.N.NO	DRAFT	CHKD	APPD
2	HFL(-)10K/REVA	AX517Q	Ø	ORIGINAL RELEASE	8/3/72		W		

MARK TMC PART NUMBER
1/8 HIGH GOTHIC WITH LATEST
REVISION LETTER



MOUNT IN "A" HOLES
AS SHOWN.

A ~ .191-.194 DIA. 2 REQ'D.

B ~ $\frac{5}{16}$ DIA. 1 REQ'D

UNLESS OTHERWISE SPECIFIED:

1. USE MATERIAL THICKNESS FOR MAXIMUM RADIUS ON ALL BENDS.
2. ALL ANGULAR BENDS 90 DEGREES.
3. REMOVE ALL BURRS AND SHARP EDGES.
4. MOUNT INSERTS AFTER FINISHING.

UNLESS OTHERWISE SPECIFIED DIMENSIONS ARE IN INCHES AND INCLUDE CHEMICALLY APPLIED OR PLATED FINISHES		2 1 NT129-0632-4 NUT, SWAGE		A	
DECIMALS	FRACTIONS	REQ'D ITEM	PART NUMBER	DESCRIPTION	SYM.
.X ± .05	1/64	LIST OF MATERIAL			
.XX ± .01	TOLS. 1/64				
.XXX ± .005	ANGLES 0°-30°				
MATERIAL ALUMINUM		THE TECHNICAL MATERIEL CORP. MAMARONECK, NEW YORK			
.064 5052-H32		BRACKET, BEARING			
FINISH S404 YEL IRID		FINAL APPROVAL	DATE 3AUG72	SIZE A	CODE IDENT. NO. 82679
		MECH. DES.	DATE 15May72	SCALE	DWG NO. MS 6364
		ELECT. DES.	DATE		ISSUE Ø
		CHECKED	DATE		SHEET OF
		DRAWN	DATE 15May72		

NOTICE TO PERSONS RECEIVING THIS DRAWING
THE TECHNICAL MATERIEL CORPORATION claims proprietary right in the material disclosed herein. This drawing is issued in confidence for engineering information only and may not be reproduced or used to manufacture anything shown hereon without permission from THE TECHNICAL MATERIEL CORPORATION to the user. This drawing is loaned for mutual assistance and is subject to recall at any time.