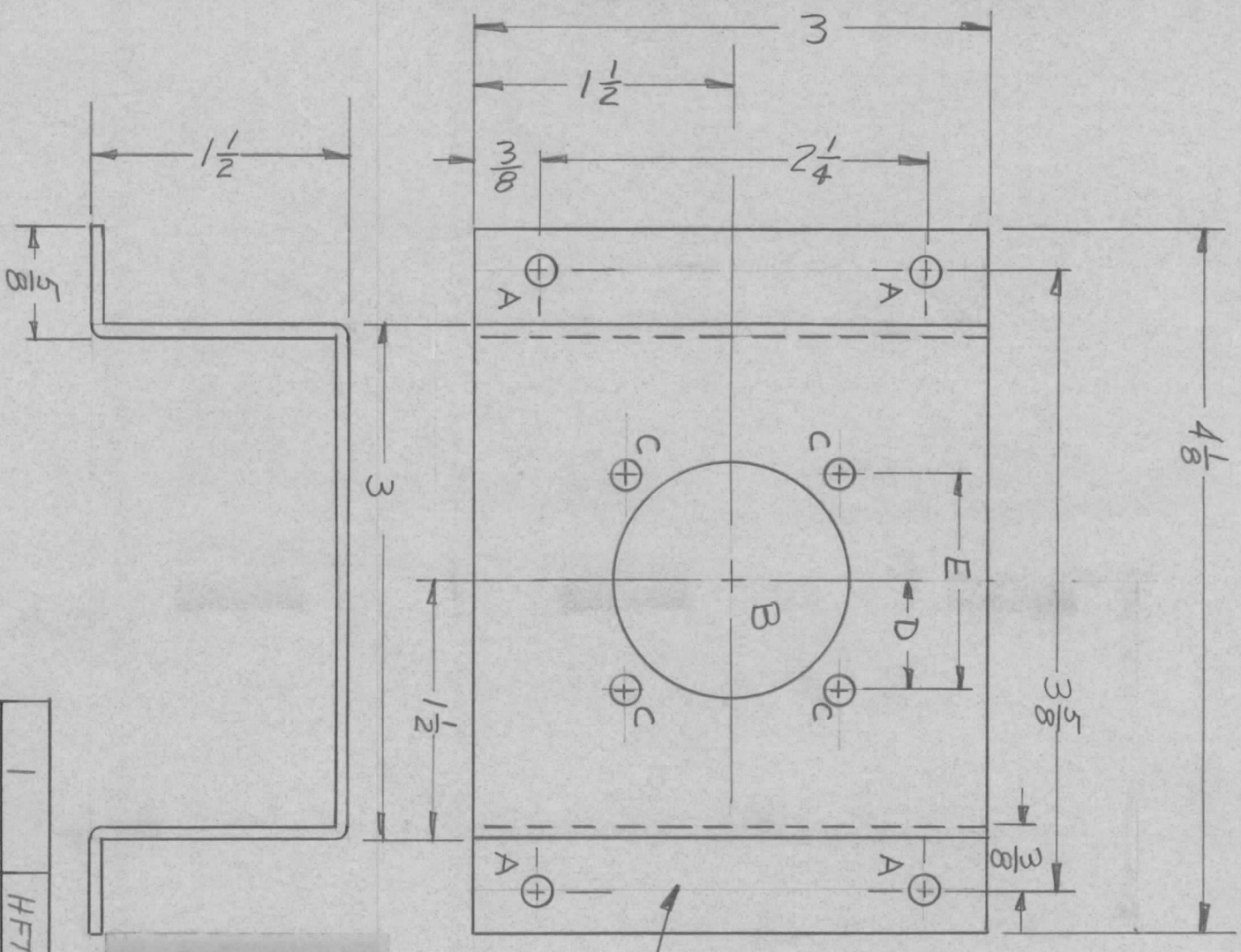


REVISIONS							
ZONE	LTR	DESCRIPTION	DATE	E.M.N.NO	DRAFT	CHKD	APPD
	Ø	ORIG RELEASE FOR PROD	10/21/71		CV		

A ~ 11/64 DIA. 4 REQ.
B ~ C ~ D ~ E SEE CHART



- UNLESS OTHERWISE SPECIFIED:
1. USE MATERIAL THICKNESS FOR MAXIMUM RADIUS ON ALL BENDS.
 2. ALL ANGULAR BENDS 90 DEGREES.
 3. REMOVE ALL BURRS AND SHARP EDGES.
 4. MOUNT INSERTS AFTER FINISHING.

P/N	HS3102A SIZE	B DIA	C DIA	D Dim	E Dim
HS6245-1	10	11/16	9/64	23/64	23/32
HS6245-2	12	13/16	9/64	13/32	13/16
HS6245-3	14	15/16	9/64	29/64	29/32
HS6245-4	16	1-1/16	9/64	31/64	31/32
HS6245-5	18	1-3/16	9/64	17/32	1-1/16
HS6245-6	20	1-5/16	9/64	37/64	1-5/32
HS6245-7	22	1-7/16	9/64	5/8	1-1/4
HS6245-8	24	1-9/16	11/64	11/16	1-3/8
HS6245-9	28	1-13/16	11/64	25/32	1-9/16
HS6245-10	32	2-1/16	11/64	7/8	1-3/4
HS6245-11	36	2-5/16	11/64	31/32	1-15/16

QTY / UNIT	1	MODEL USED ON	HFTA-1KJ2	ASSY NO.	RAK138-1A
APPLICATION					
CODE					

NOTICE TO PERSONS RECEIVING THIS DRAWING
THE TECHNICAL MATERIEL CORPORATION claims proprietary right in the material disclosed hereon. This drawing is issued in confidence for engineering information only and may not be reproduced or used to manufacture anything shown hereon without permission from THE TECHNICAL MATERIEL CORPORATION to the user. This drawing is loaned for mutual assistance and is subject to recall at any time.

UNLESS OTHERWISE SPECIFIED DIMENSIONS ARE IN INCHES AND INCLUDE CHEMICALLY APPLIED OR PLATED FINISHES	DECIMALS	FRACTIONS
X ± .05	1/64	
.XX ± .01	TOLS.	ANGLES
.XXX ± .005		0° - 30'
MATERIAL	064 ALUM	
FINISH	5052-H32	
	S404 YEL IRID	

REQ'D ITEM	PART NUMBER	DESCRIPTION	SYM.
------------	-------------	-------------	------

LIST OF MATERIAL
THE TECHNICAL MATERIEL CORP.
MAMARONECK, NEW YORK
BRKT, CONN MTG

FINAL APPROVAL	DATE	10/21/71	
MECH. DES.	DATE	10/21/71	
ELECT. DES.	DATE		
CHECKED	DATE		
DRAWN	DATE	28 SEP 71	
SIZE	CODE IDENT. NO.	DWG NO.	ISSUE
B	82679	MS6245	Ø
SCALE	SHEET	OF	