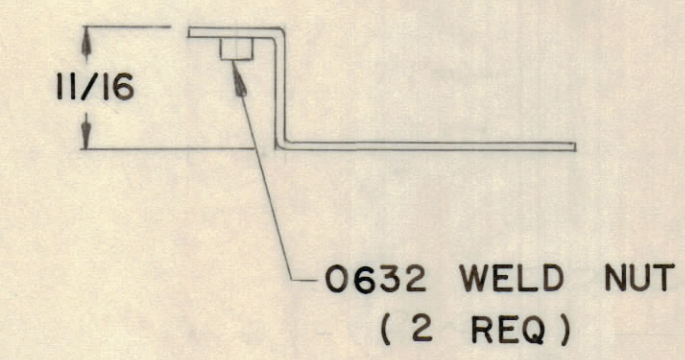
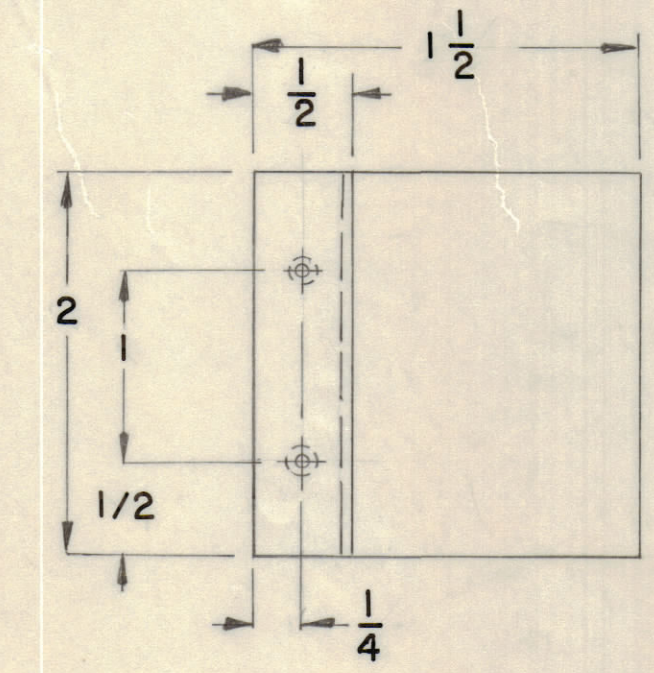


PART NO.	SHEET NO.	DESCRIPTION	USED ON
MS 6232-1	1	FILTER CUT OUT	SYM 1203
MS 6232-2	2	XMTR EXHAUST CUT OUT	HFTA-1K (TLAA-1K)
MS 6232-3	3	BLANK	
MS 6232-4	4	XMTR EXHAUST CUT OUT	SYM 1205 (TLAM-1K)
MS6232-5	5	XMTR EXHAUST CUT OUTS	GPTA-IKJ

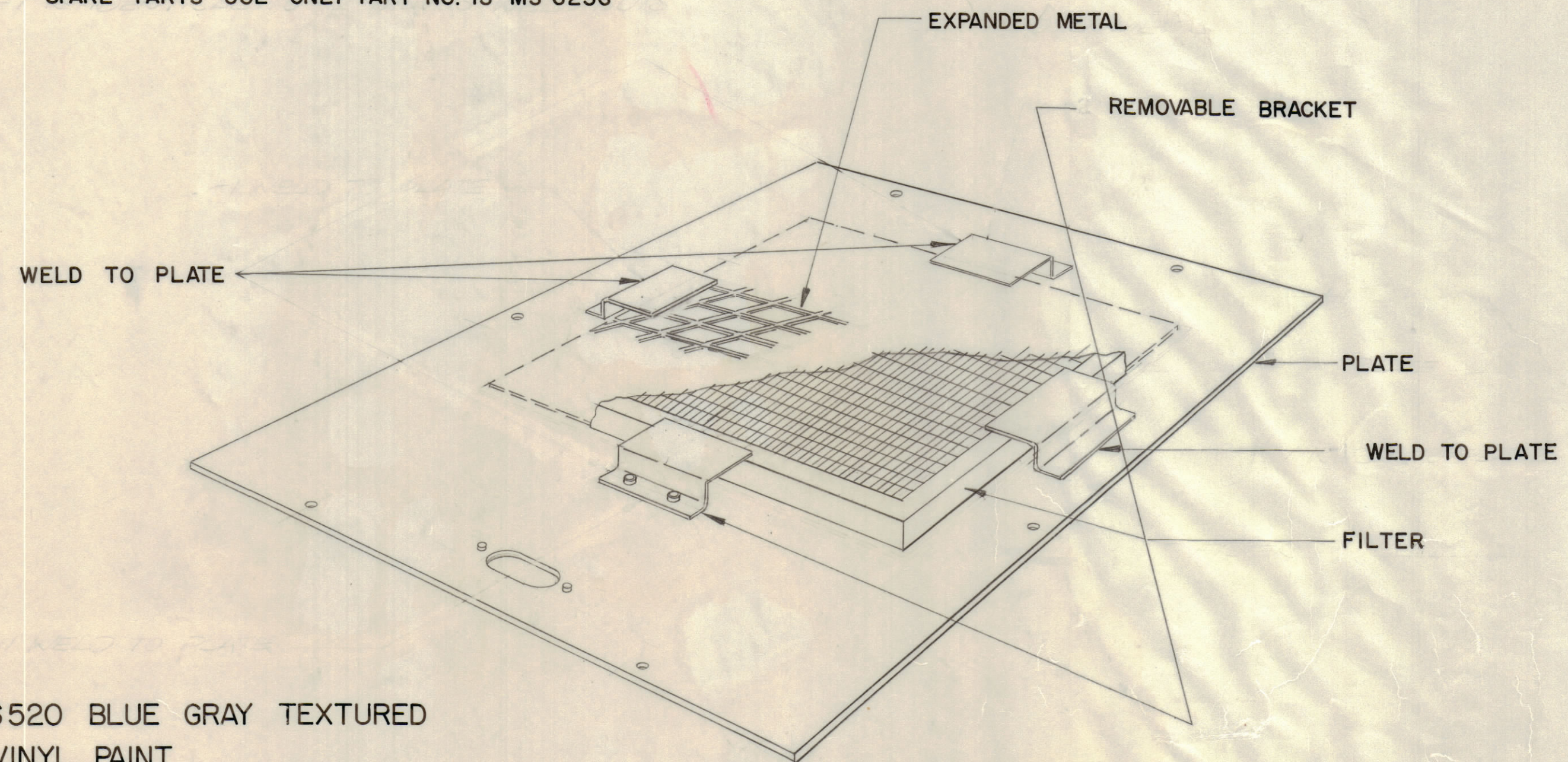
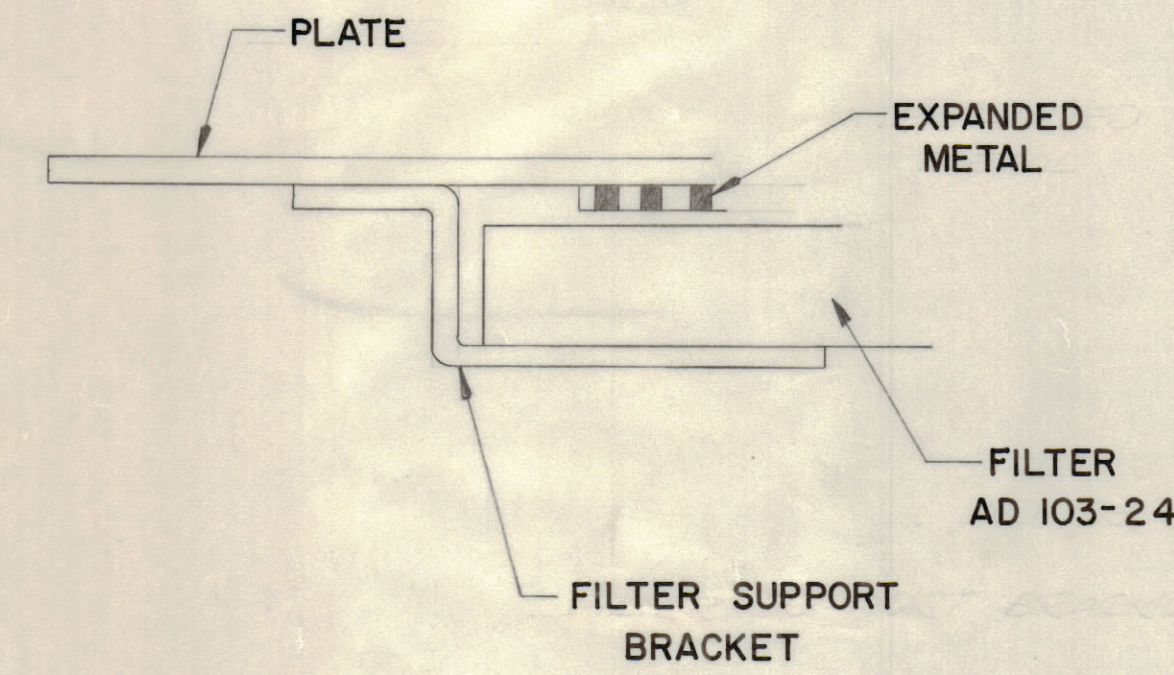
REVISIONS							
E.M.N.O	DRAFT	CHKD	ZONE	LTR	DESCRIPTION	DATE	APPROVED
	(C)			(D)	ORIGINAL RELEASE FOR PRODUCTION	10/21/71	
20618	GE			A	TLAA-1K ADDED TO MS6232-2	4.26.72	
21369	GOL	QJ		B	MS6232-5 ADD	3.10.76	(Signature)



NOTE REMOVABLE BRACKET SHOWN. WELDED BRACKET IDENTICAL EXCEPT FOR WELD NUTS

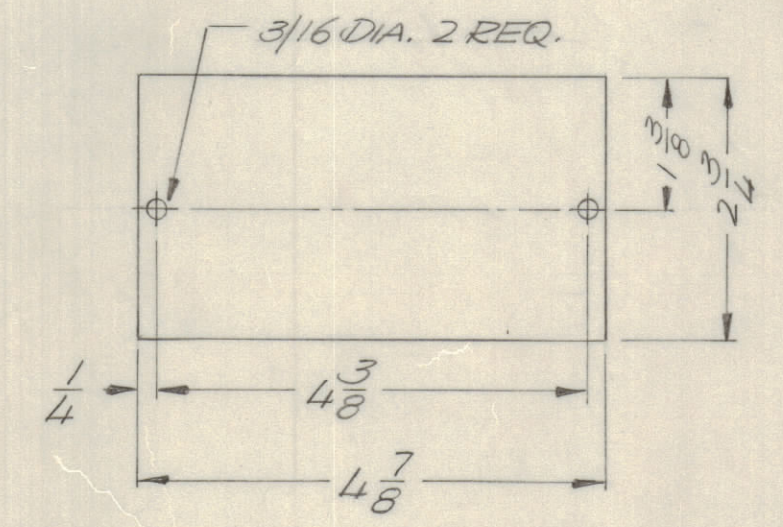
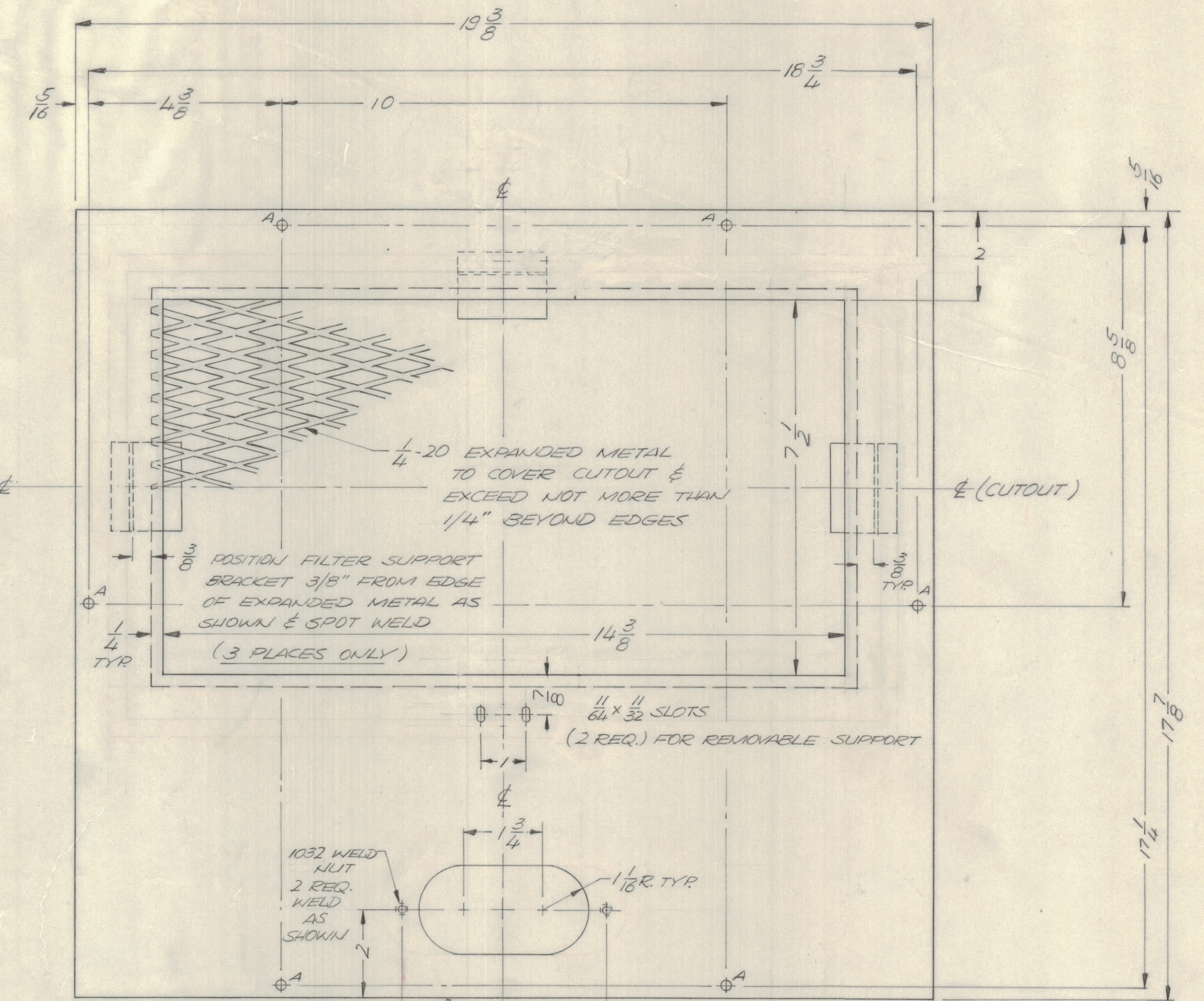
FILTER SUPPORT BRACKET

REMOVABLE BRACKET TO BE SUPPLIED WITH TOP. FOR SPARE PARTS USE ONLY PART NO. IS MS 6236



FINISH NOTES - S520 BLUE GRAY TEXTURED VINYL PAINT

FABRICATION NOTES - MATERIAL 1/16 STEEL UNLESS OTHERWISE SPECIFIED



HOLE DESCRIPTION REQ. A - 15/64 DIA. - 6

MS 6232-1 TOP, CABINET, FILTER CUTOUT (ONLY)

TO BE SUPPLIED WITH TOP. FOR SPARE PARTS USE ONLY P/N IS MS 6233

QTY. REQ.	ITEM	PART NO.	DESCRIPTION	SYMBOL
E. BLUDETTI LIST OF MATERIAL				
FINAL APPROVAL		DATE	THE TECHNICAL MATERIEL CORP.	
MECH. DES.		DATE	MAMARONECK, NEW YORK	
ELECT. DES.		DATE	(CABINET ELECTRICAL)	
CHECKED		DATE	TOP, CABINET	
DRAWN		DATE	SIZE CODE IDENT NO. DWG NO. ISSUE	
MATERIAL		D 82679 MS 6232		B
FINISH		SCALE NTS		SHEET 1 OF 5

QTY / UNIT	MODEL USED ON	ASS'Y NO.
1	MS 6230	
APPLICATION		
CODE		
MATERIAL		
AS NOTED		
FINISH		
AS NOTED		

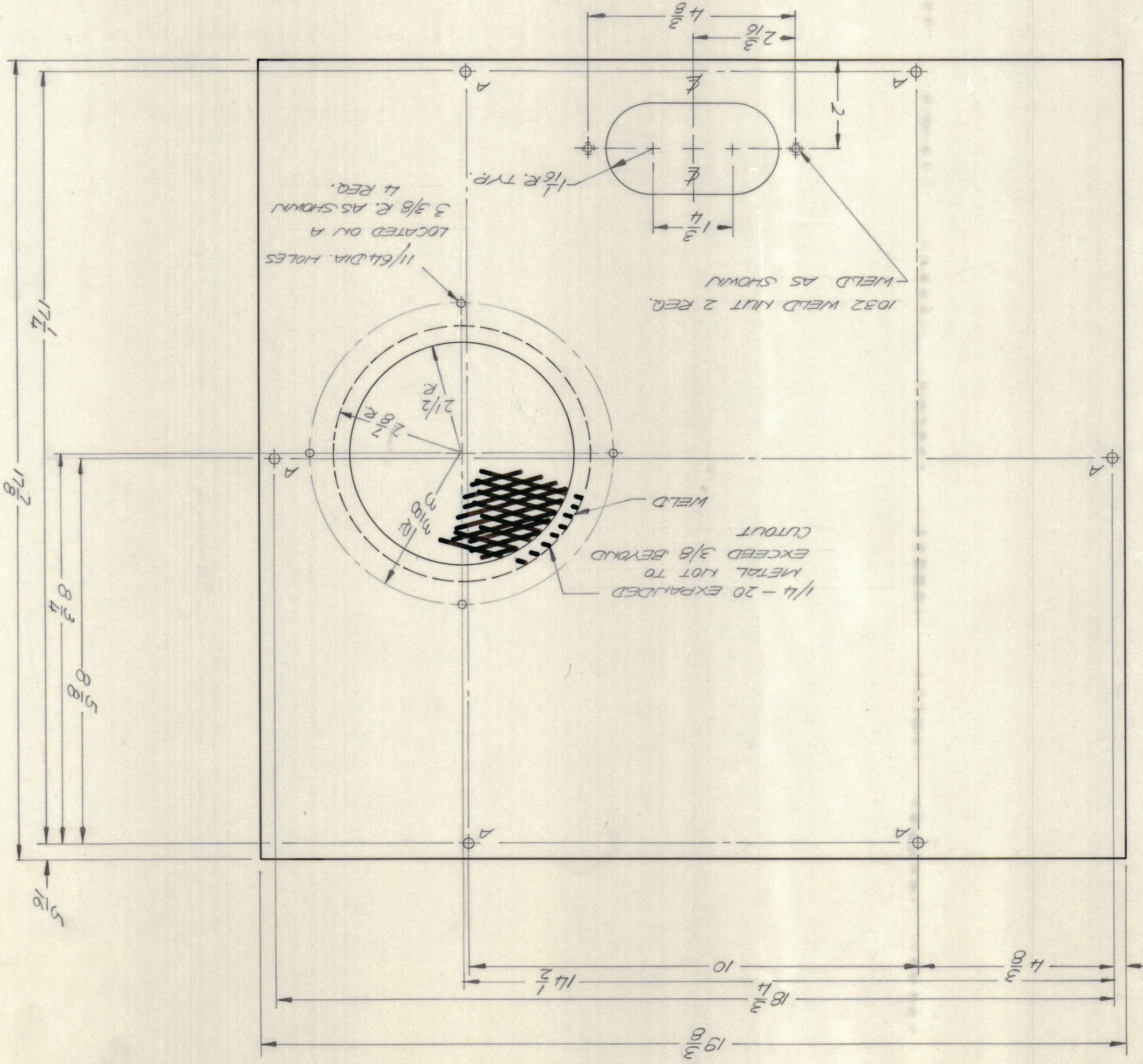
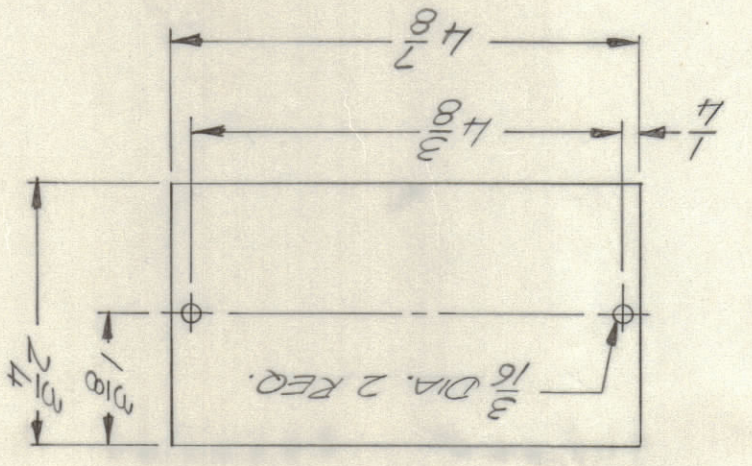
NOTICE TO PERSONS RECEIVING THIS DRAWING THE TECHNICAL MATERIEL CORPORATION claims proprietary right in the material disclosed hereon. This drawing is issued in confidence for engineering information only and may not be reproduced or used to manufacture anything shown hereon without permission from THE TECHNICAL MATERIEL CORPORATION to the user. This drawing is loaned for mutual assistance and is subject to recall at any time.



QTY. ITEM PART NO. DESCRIPTION SYMBOL LIST OF MATERIAL F. BUDETTI		DATE 180771 MECH. DES. DATE 180771 ELECT. DES. DATE CHECKED DATE DRAWN DATE 7/7/71 EVAN REBELST		UNLESS OTHERWISE SPECIFIED DIMENSIONS ARE IN INCHES AND INCLUDE CHEMICALLY APPLIED OR PLATED FINISHES TOLERANCES ON FRACTIONS DECIMALS X = .05 XX = .01 XXX = .005 ANGLES ± 1/64 ± 0° - 30'		FINISH SEE SHEET 1 MATERIAL SEE SHEET 1		QTY / UNIT MODEL USED ON ASS'Y NO. 1 MS 6230		APPLICATION CODE		NOTICE TO PERSONS RECEIVING THIS DRAWING THE TECHNICAL MATERIAL CORPORATION ASSUMES NO LIABILITY FOR THE MATERIAL DESCRIBED HEREON. THIS DRAWING IS ISSUED IN CONFIDENCE FOR ENGINEERING INFORMATION ONLY AND MAY NOT BE REPRODUCED OR USED TO MANUFACTURE WITHOUT PERMISSION FROM THE TECHNICAL MATERIAL CORPORATION. THE TECHNICAL MATERIAL CORPORATION ASSUMES NO LIABILITY FOR THE MATERIAL DESCRIBED HEREON. THIS DRAWING IS ISSUED IN CONFIDENCE FOR ENGINEERING INFORMATION ONLY AND MAY NOT BE REPRODUCED OR USED TO MANUFACTURE WITHOUT PERMISSION FROM THE TECHNICAL MATERIAL CORPORATION.	
THE TECHNICAL MATERIAL CORP. MAMARONECK, NEW YORK		TOP CABINET (CABINET ELECTRICAL) TOP, CABINET		MS 6232		D 82679 SIZE (CODE) IDENT NO. DWG NO.		B MS 6232 ISSUE		SCALE HTS		SHEET 2 OF 5	

MS 6232-2  
 TOP CABINET, XMTR EXHAUST, TLA-A-1K

(SEE SHEET 1)  
 COVER PLATE DETAIL



HOLE DESCRIPTION	REQ.
A 15/64 DIA.	6

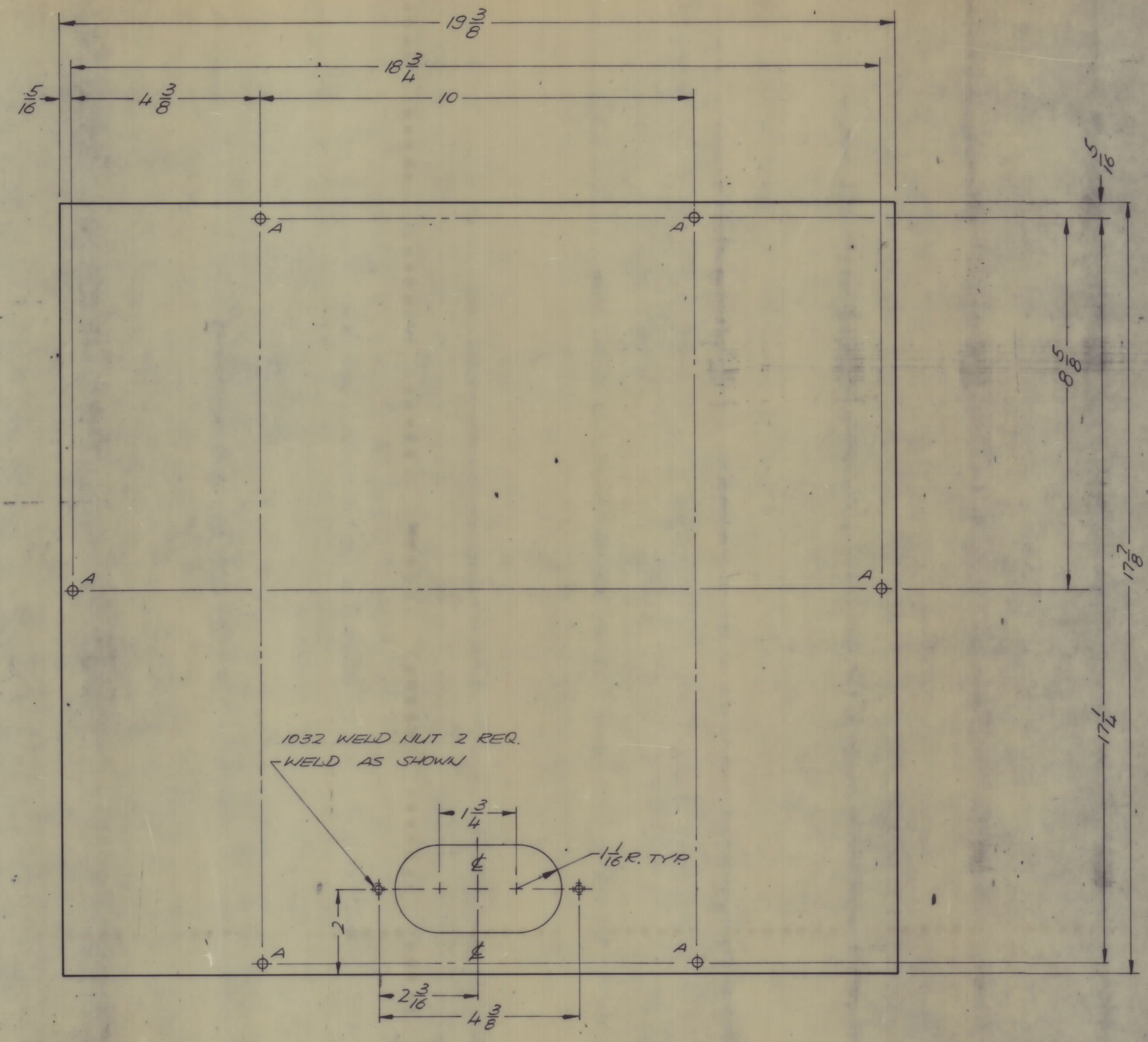
REVISIONS	E.M. NO	DRAFT	CHKD	ZONE	LTR	DESCRIPTION	DATE	APPROVED
20618 GE						TLA-A-1K ADD TO XMTR EXHAUST	4/23/72	
21366 GDC					B	SEE SH. 1	3-16-76	Q
						ORIGINAL RELEASE FOR PRODUCTION	10/1/71	

B MS 6232

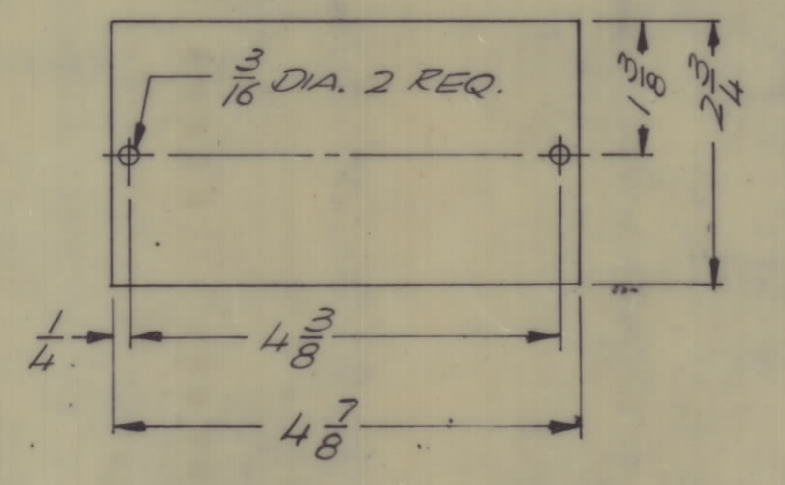
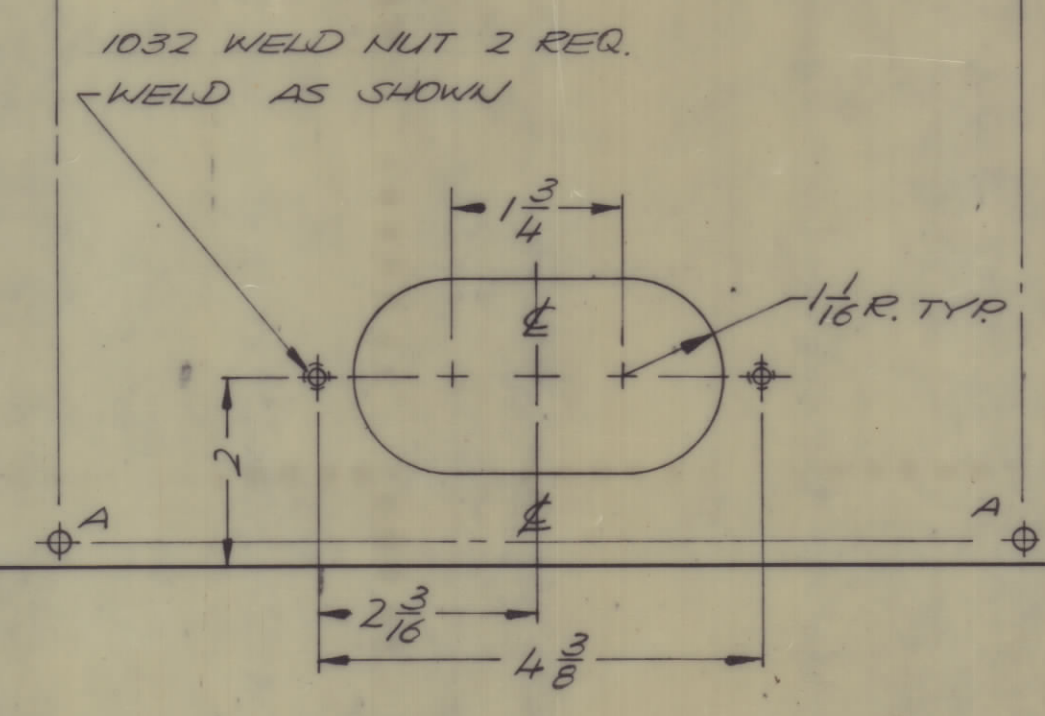
1



REVISIONS							
E.M.N.O	DRAFT	CHKD	ZONE	LTR	DESCRIPTION	DATE	APPROVED
	CA			D	ORIGINAL RELEASE FOR PRODUCTION	10/31/71	
20618	GE	EG		A	SEE SHEETS 1, 2, & 4	4/26/72	SP
21366	GDL	Or		B	SEE SHEET 1	3-10-76	CP



HOLE	DESCRIPTION	REQ.
A	15/64 DIA.	6



COVER PLATE DETAIL  
(SEE SHEET 1)

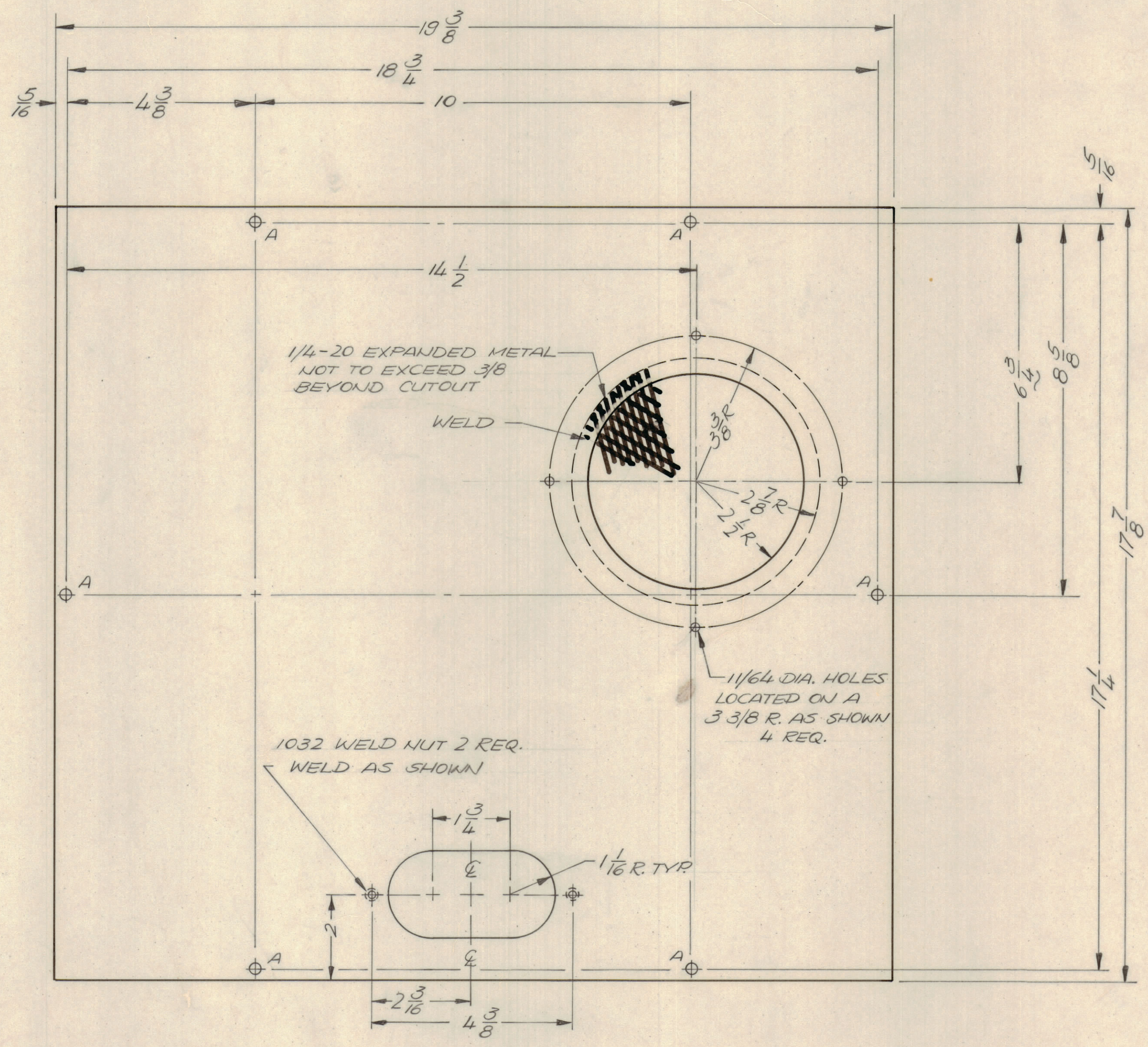
MS 6232-3  
TOP, CABINET, BLANK

1	MS 6230	
QTY / UNIT	MODEL USED ON	ASS'Y NO.
APPLICATION		
CODE		
NOTICE TO PERSONS RECEIVING THIS DRAWING THE TECHNICAL MATERIEL CORPORATION claims proprietary right in the material disclosed hereon. This drawing is issued in confidence for engineering information only and may not be reproduced or used to manufacture anything shown hereon without permission from THE TECHNICAL MATERIEL CORPORATION to the user. This drawing is loaned for mutual assistance and is subject to recall at any time.		

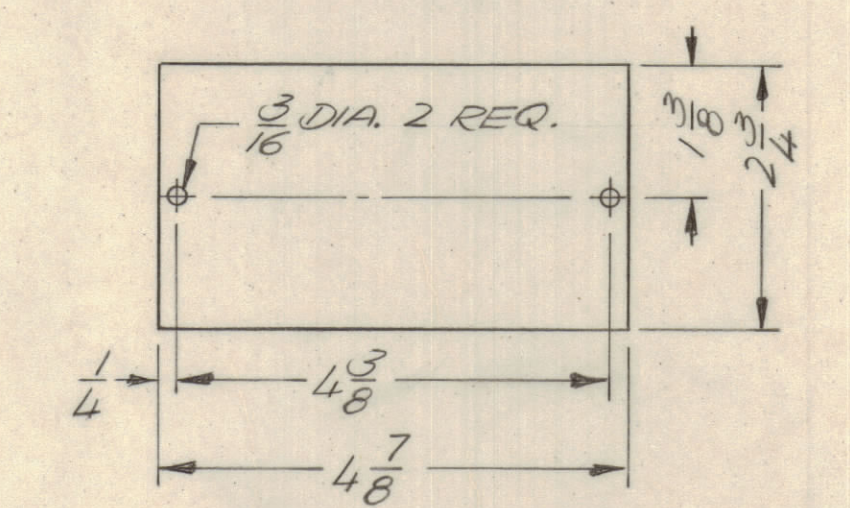
QTY. REQ.	ITEM	PART NO.	DESCRIPTION	SYMBOL
F. BUDETTI LIST OF MATERIAL				
UNLESS OTHERWISE SPECIFIED DIMENSIONS ARE IN INCHES AND INCLUDE CHEMICALLY APPLIED OR PLATED FINISHES		FINAL APPROVAL	DATE	
		MECH. DES.	DATE	
		ELECT. DES.	DATE	
		CHECKED	DATE	
		DRAWN	DATE	
TOLERANCES ON				
DECIMALS		FRACTIONS		
X ± .05		± 1/64		
.XX ± .01		ANGLES		
.XXX ± .005		± 0° - 30'		
MATERIAL		SIZE CODE IDENT NO. DWG NO.		
SEE SHEET 1		D 82679 MS 6232		
FINISH		ISSUE		
SEE SHEET 1		B		
SCALE NTS				SHEET 3 OF 5



REVISIONS							
E.M.N.NO	DRAFT	CHKD	ZONE	LTR	DESCRIPTION	DATE	APPROVED
20818	GE	BN		A	ADDED SHEET 4	3-21-72	EP
21366	GDL			B	SEE SHEET 1	3-10-76	CL



HOLE DESCRIPTION REQ.  
A — 15/64 DIA. — 6



MS 6232-4  
TOP CABINET, XMTR EXHAUST, TLAM-IK

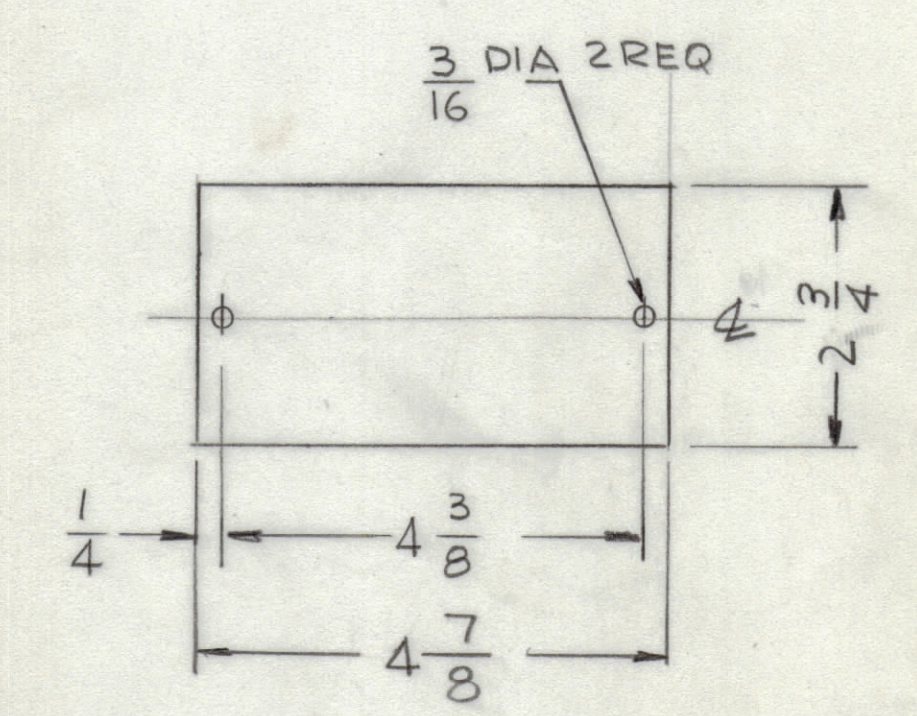
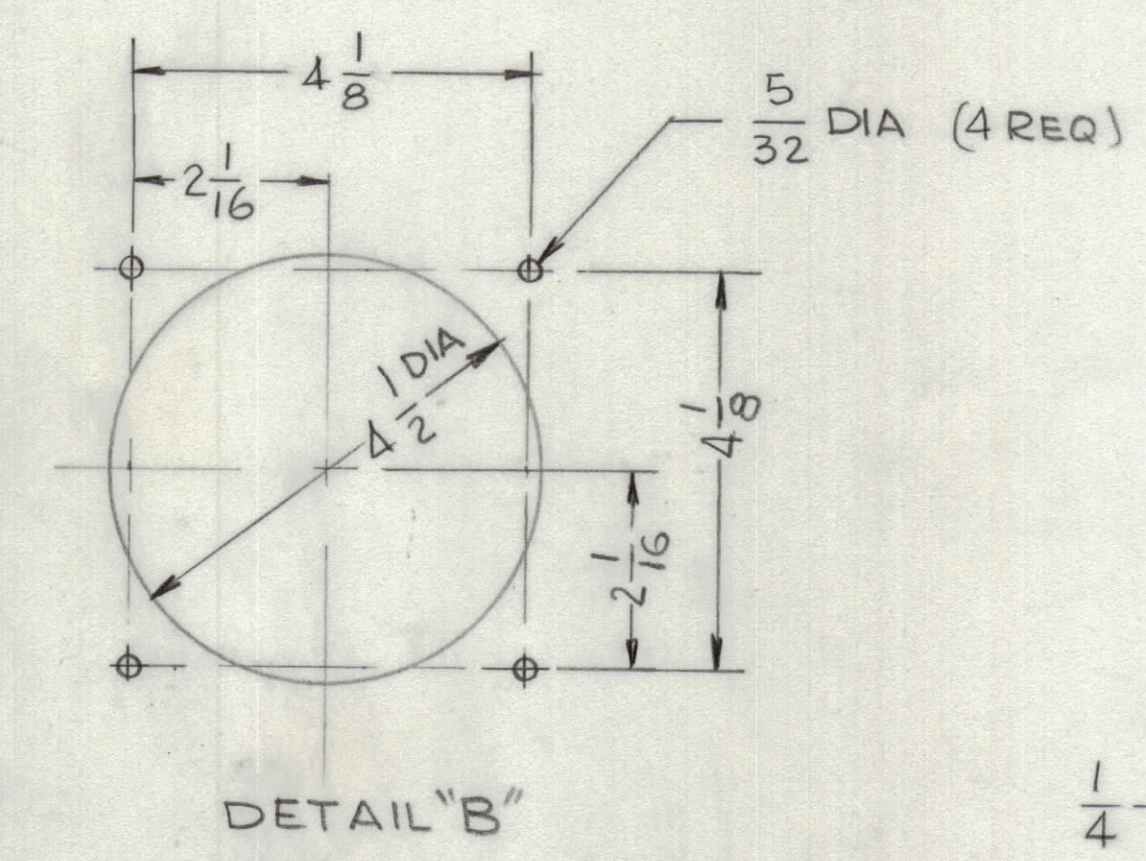
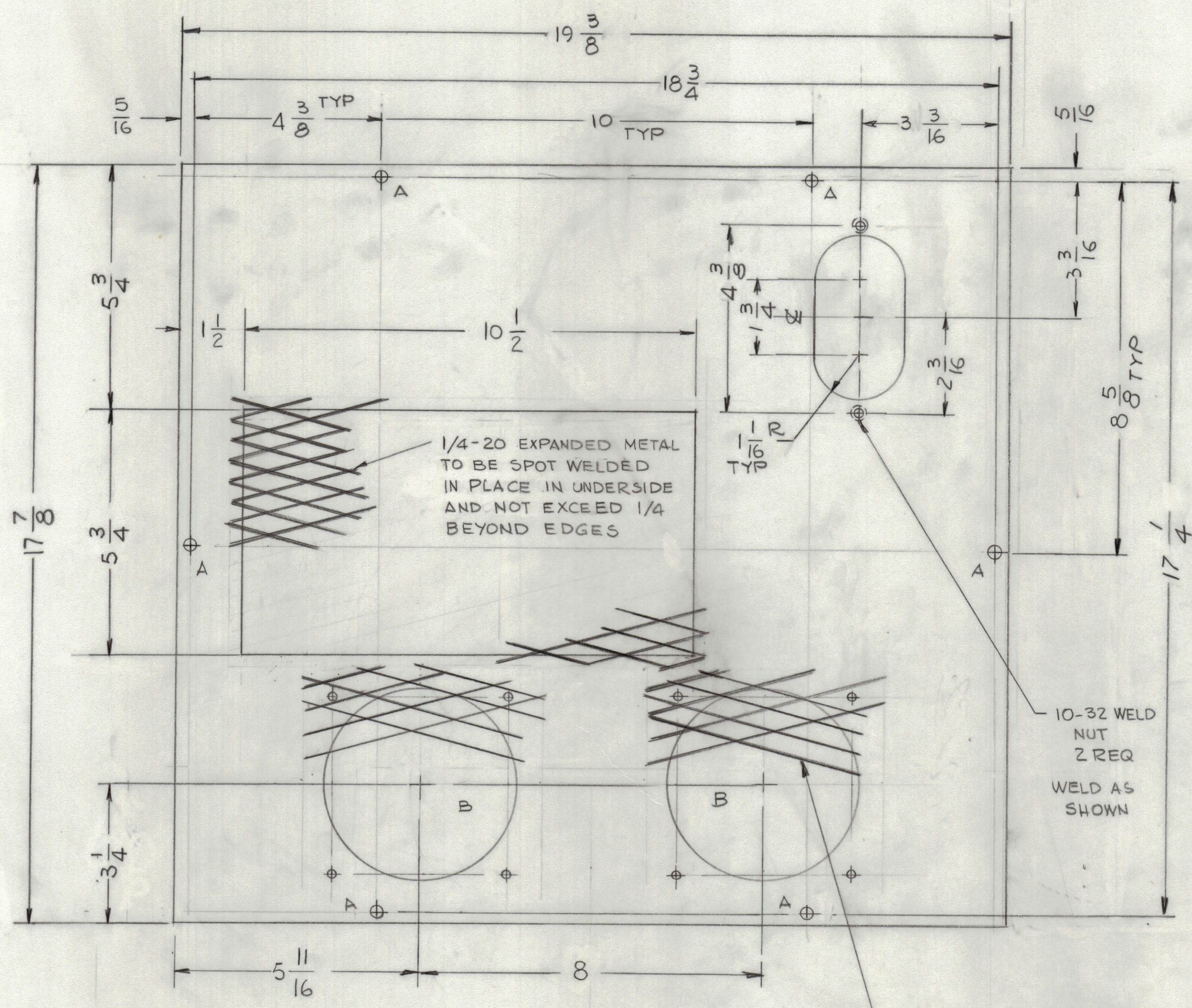
1 MS 6230		
QTY / UNIT	MODEL USED ON	ASSY NO.
APPLICATION		
CODE		
NOTICE TO PERSONS RECEIVING THIS DRAWING THE TECHNICAL MATERIEL CORPORATION claims proprietary right in the material disclosed hereon. This drawing is issued in confidence for engineering information only and may not be reproduced or used to manufacture anything shown herein without permission from THE TECHNICAL MATERIEL CORPORATION to the user. This drawing is loaned for mutual assistance and is subject to recall at any time.		

UNLESS OTHERWISE SPECIFIED DIMENSIONS ARE IN INCHES AND INCLUDE CHEMICALLY APPLIED OR PLATED FINISHES			
TOLERANCES ON		DATE	
DECIMALS	FRACTIONS	MECH. DES.	2/1/72
X ± .05	± 1/64	ELECT. DES.	2/1/72
XX ± .01	ANGLES	CHECKED	2/1/72
XXX ± .005	± 0° - 30°	DRAWN	3/2/72
MATERIAL		SEE SHEET 1	
FINISH		SEE SHEET 1	

QTY. REQ.	ITEM	PART NO.	DESCRIPTION	SYMBOL
F.B. LIST OF MATERIAL				
FINAL APPROVAL [Signature] DATE 2/1/72				
MECH. DES. [Signature] DATE 2/1/72				
ELECT. DES. [Signature] DATE 2/1/72				
CHECKED [Signature] DATE 2/1/72				
DRAWN [Signature] DATE 3/2/72				
<b>THE TECHNICAL MATERIEL CORP.</b> MAMARONECK, NEW YORK				
(CABINET ELECTRICAL) TOP, CABINET				
SIZE	CODE	IDENT NO.	DWG NO.	ISSUE
D	82679		MS 6232	B
SCALE: NTS				SHEET 4 OF 5



REVISIONS							
E.M.N.O	DRAFT	CHKD	ZONE	LTR	DESCRIPTION	DATE	APPROVED
21366	GDL			B	SHEET 5 ADD.	3.10.76	Q. C.



HOLES  
 A - 15/64 DIA 6 REQ  
 B - SEE DETAIL

**MS6232 - 5**  
**TOP CABINET, XMTR EXHAUST, GPTA - IK J**  
**(ONLY)**

MS 6230		
QTY / UNIT	MODEL USED ON	ASS'Y NO.
APPLICATION		
CODE		
<small>NOTICE TO PERSONS RECEIVING THIS DRAWING</small> <small>THE TECHNICAL MATERIEL CORPORATION claims proprietary right in the material disclosed hereon. This drawing is issued in confidence for engineering information only and may not be reproduced or used to manufacture anything shown hereon without permission from THE TECHNICAL MATERIEL CORPORATION to the user. This drawing is loaned for mutual assistance and is subject to recall at any time.</small>		

UNLESS OTHERWISE SPECIFIED DIMENSIONS ARE IN INCHES AND INCLUDE CHEMICALLY APPLIED OR PLATED FINISHES		FINAL APPROVAL G.B.B.	DATE 3/11/76
MECH. DES.		DATE	
ELECT. DES.		DATE	
CHECKED		DATE	
DRAWN G.D.L.		DATE 3-10-76	
MATERIAL # 16 GAGE STEEL		FINISH SS20 BLUE GRAY TEXTURED VINYL PAINT	

QTY. REQ.	ITEM	PART NO.	DESCRIPTION	SYMBOL
LIST OF MATERIAL				
THE TECHNICAL MATERIEL CORP. MAMARONECK, NEW YORK				
(CABINET ELECTRICAL)				
TOP, CABINET				
SIZE	CODE	IDENT NO.	DWG NO.	ISSUE
D	82679	MS 6232	B	
SCALE 1/2				SHEET 5 OF 5