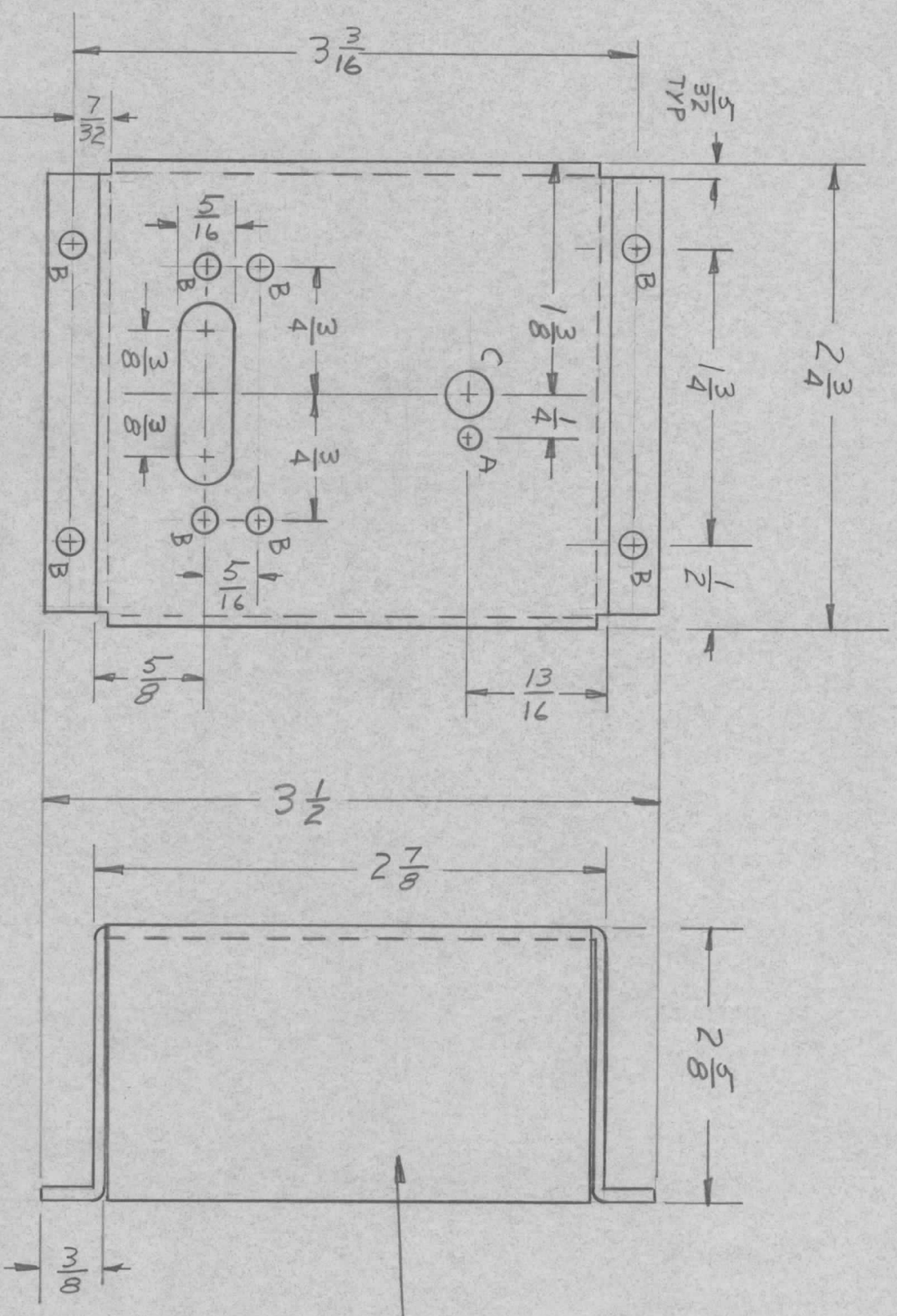


REVISIONS							
ZONE	LTR	DESCRIPTION	DATE	E.M.N. NO	DRAFT	CHKD	APPD
Ø		ORIG RELEASE FOR PROD	9/27/71		CV		

MARK TMC PART NUMBER  
1/8 HIGH GOTHIC WITH LATEST  
REVISION LETTER



- A ~ 7/64 DIA 1 REQ'D
- B ~ 9/64 DIA. 8 REQ'D.
- C ~ 17/64 DIA 1 REQ'D

QTY / UNIT	1	SYM	1202	AX	5137
MODEL USED ON	APPLICATION				
ASS'Y NO.	CODE				

NOTICE TO PERSONS RECEIVING THIS DRAWING  
THE TECHNICAL MATERIEL CORPORATION claims proprietary right in the material disclosed hereon. This drawing is issued in confidence for engineering information only and may not be reproduced or used to manufacture anything shown hereon without permission from THE TECHNICAL MATERIEL CORPORATION to the user. This drawing is loaned for mutual assistance and is subject to recall at any time.

UNLESS OTHERWISE SPECIFIED DIMENSIONS ARE IN INCHES AND INCLUDE CHEMICALLY APPLIED OR PLATED FINISHES	DECIMALS	FRACTIONS
.X ± .05	1/64	
.XX ± .01	TOLS.	ANGLES
.XXX ± .005		90° .30'
MATERIAL	.051 ALUM	
FINISH	5052-H32	
	S404 YEL IRID	

REF: LD 2482

REQ'D ITEM	PART NUMBER	DESCRIPTION	SYM.
LIST OF MATERIAL			
THE TECHNICAL MATERIEL CORP. MAMARONECK, NEW YORK			
FINAL APPROVAL	MECH. DES.	DATE	
<i>[Signature]</i>	<i>[Signature]</i>	18A 71	
ELECT. DES.	DATE		
<i>[Signature]</i>	18A 71		
CHECKED	DATE		
<i>[Signature]</i>			
DRAWN	DATE		
<i>[Signature]</i>	18A 71		
SIZE	CODE IDENT. NO.	DWG. NO.	ISSUE
B	82679	MS6226	Ø
SCALE		SHEET	OF