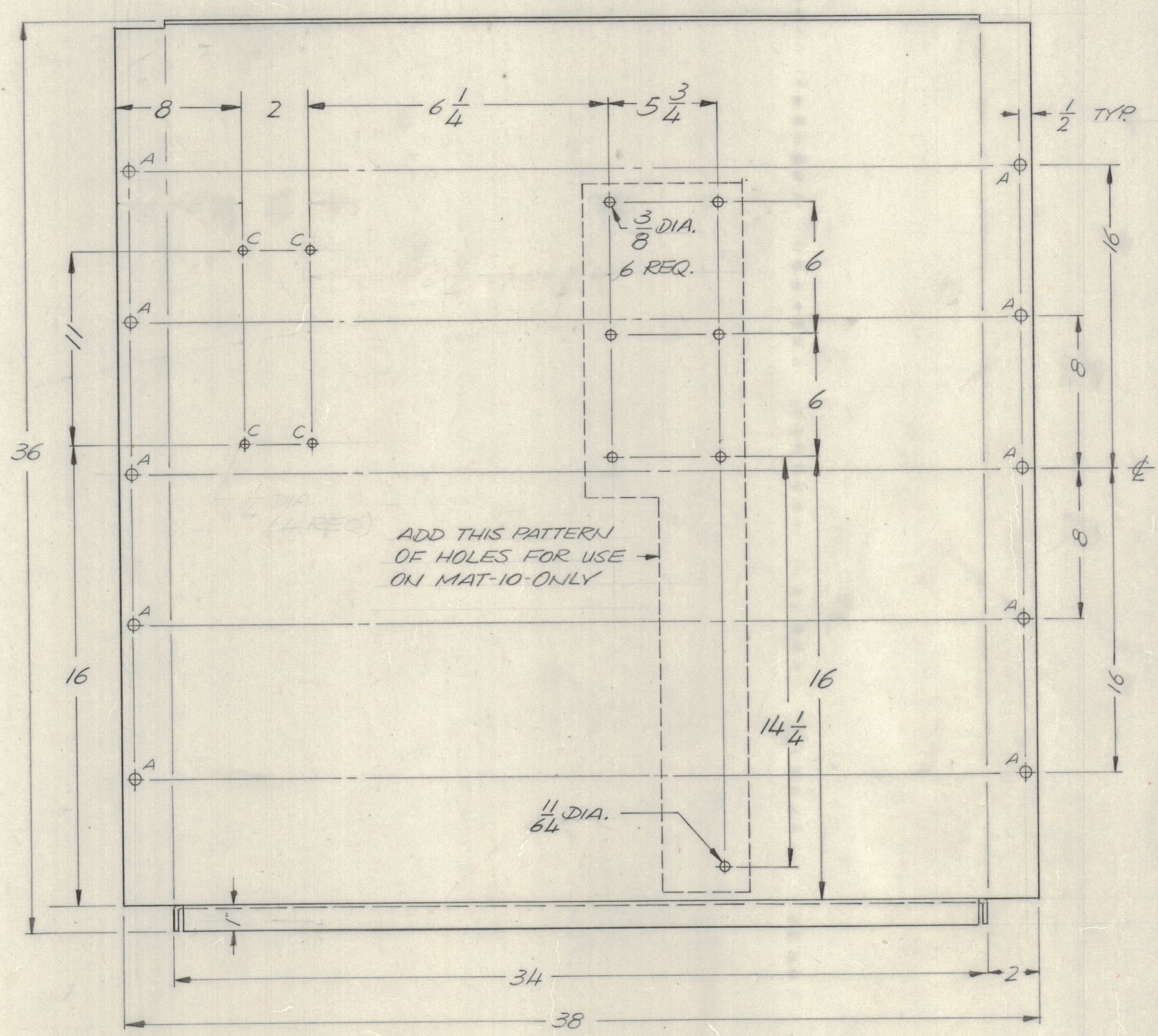
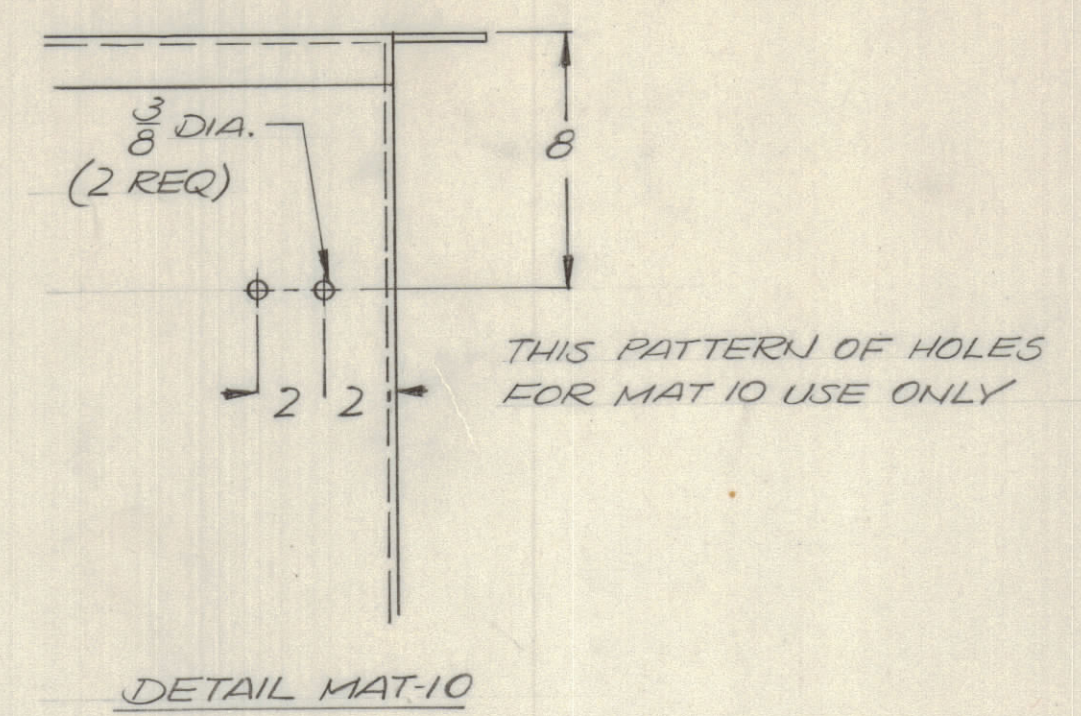
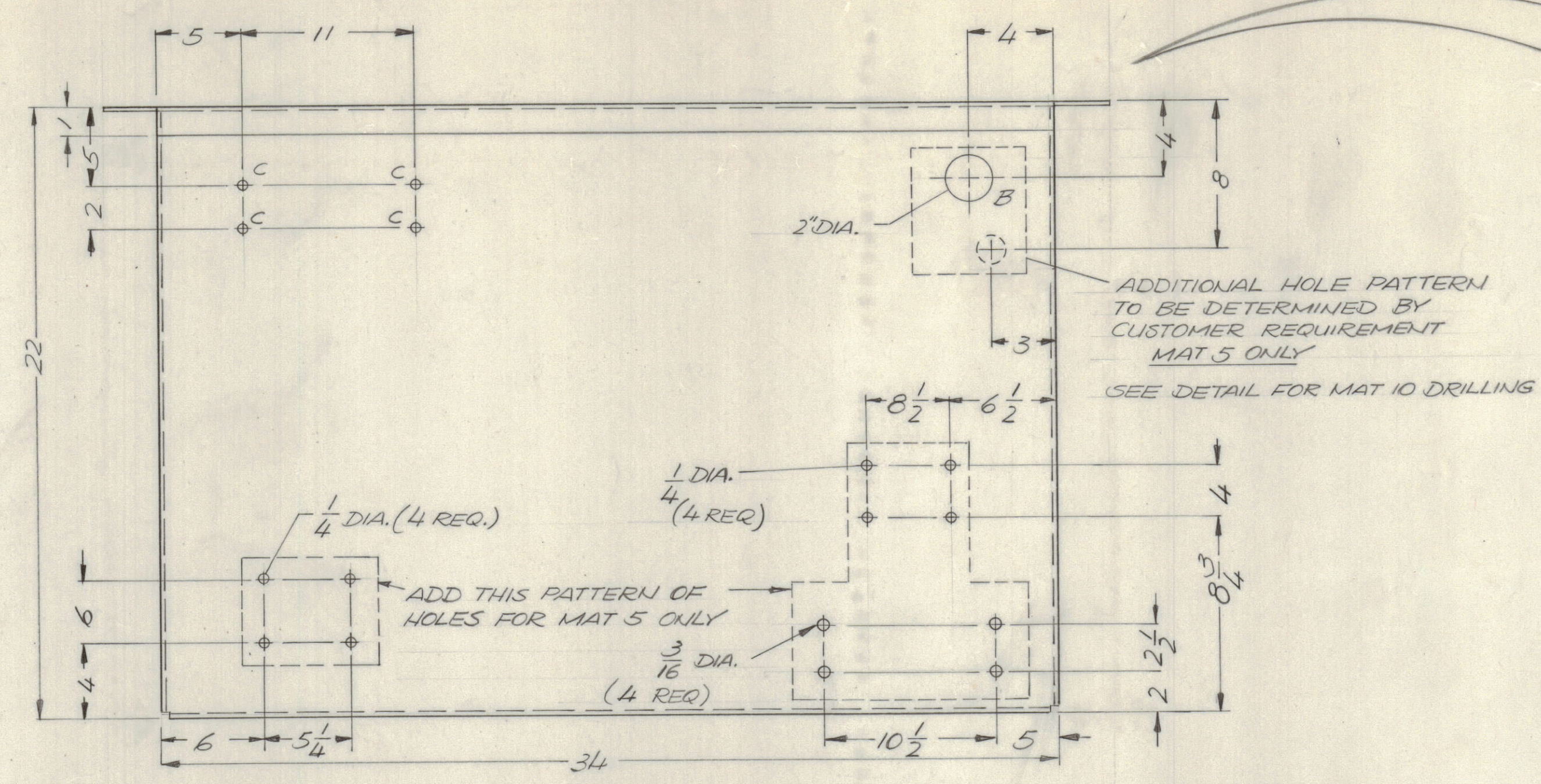


REVISIONS							
E.M.N.O	DRAFT	CHKD	ZONE	LTR	DESCRIPTION	DATE	APPROVED
	W			A	ORIGINAL RELEASE FOR PRODUCTION	10/14/72	
				A	SEE SHEET 2 & 4	5-10-77	



HOLE DESCRIPTION REQ.

A	3/8 DIA.	10
B	2" DIA.	1
C	1/4 DIA.	8

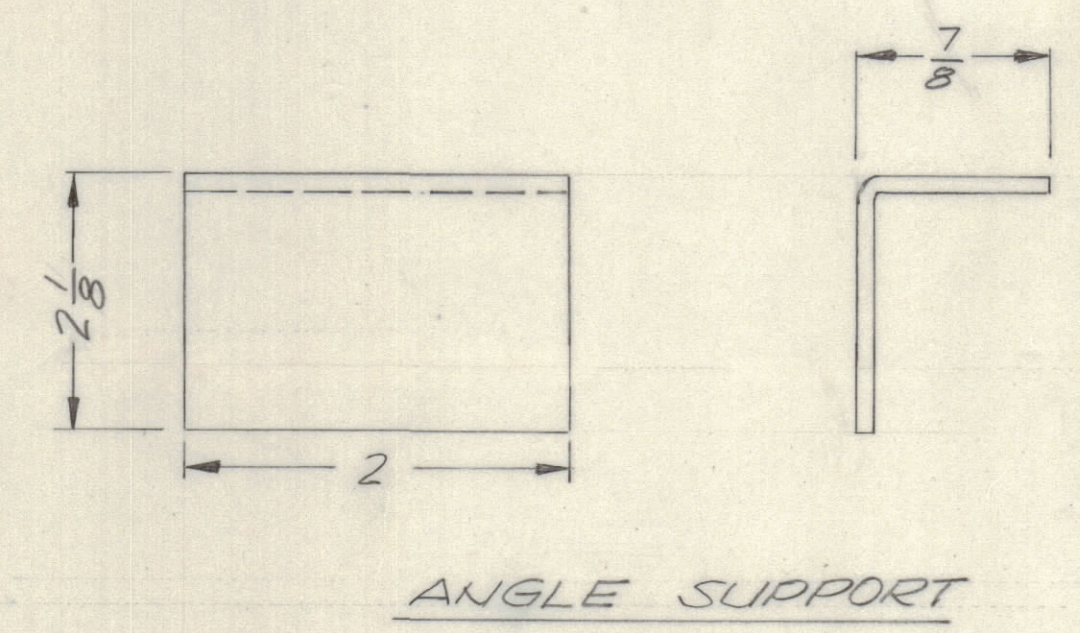
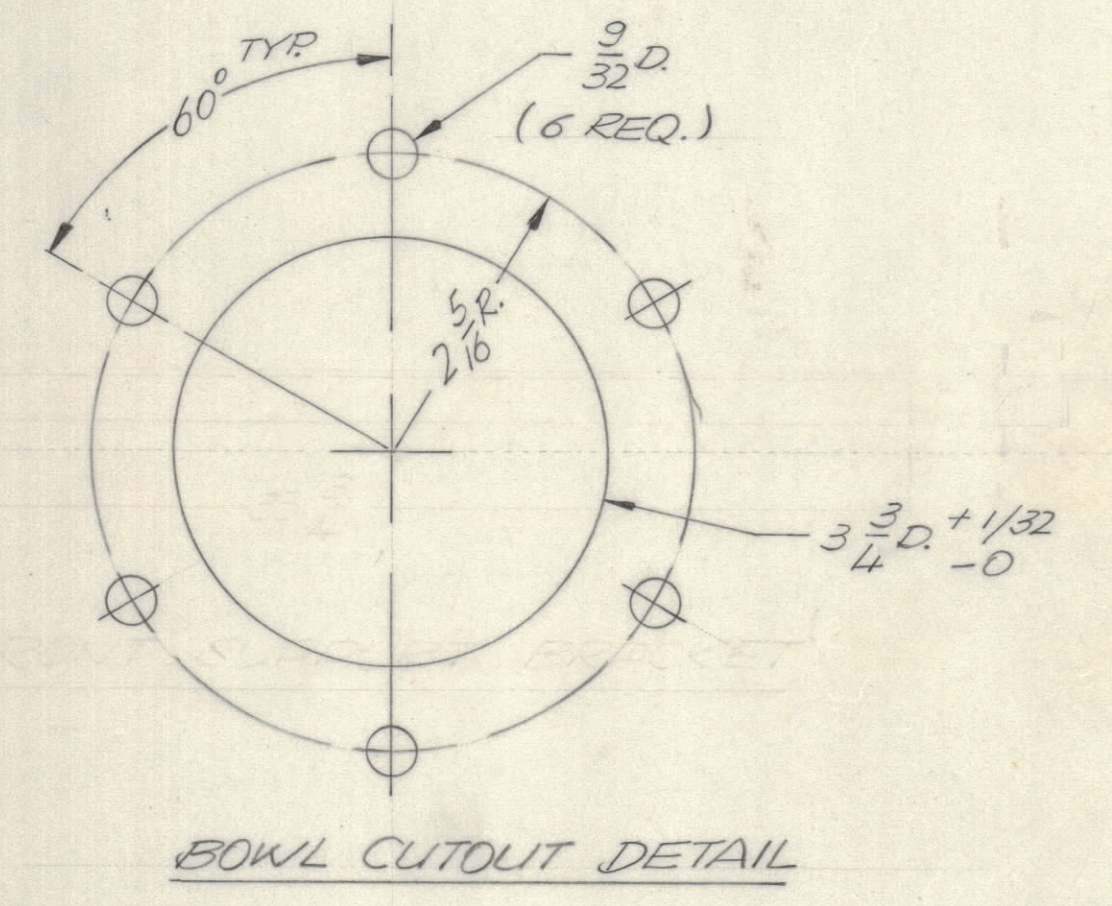
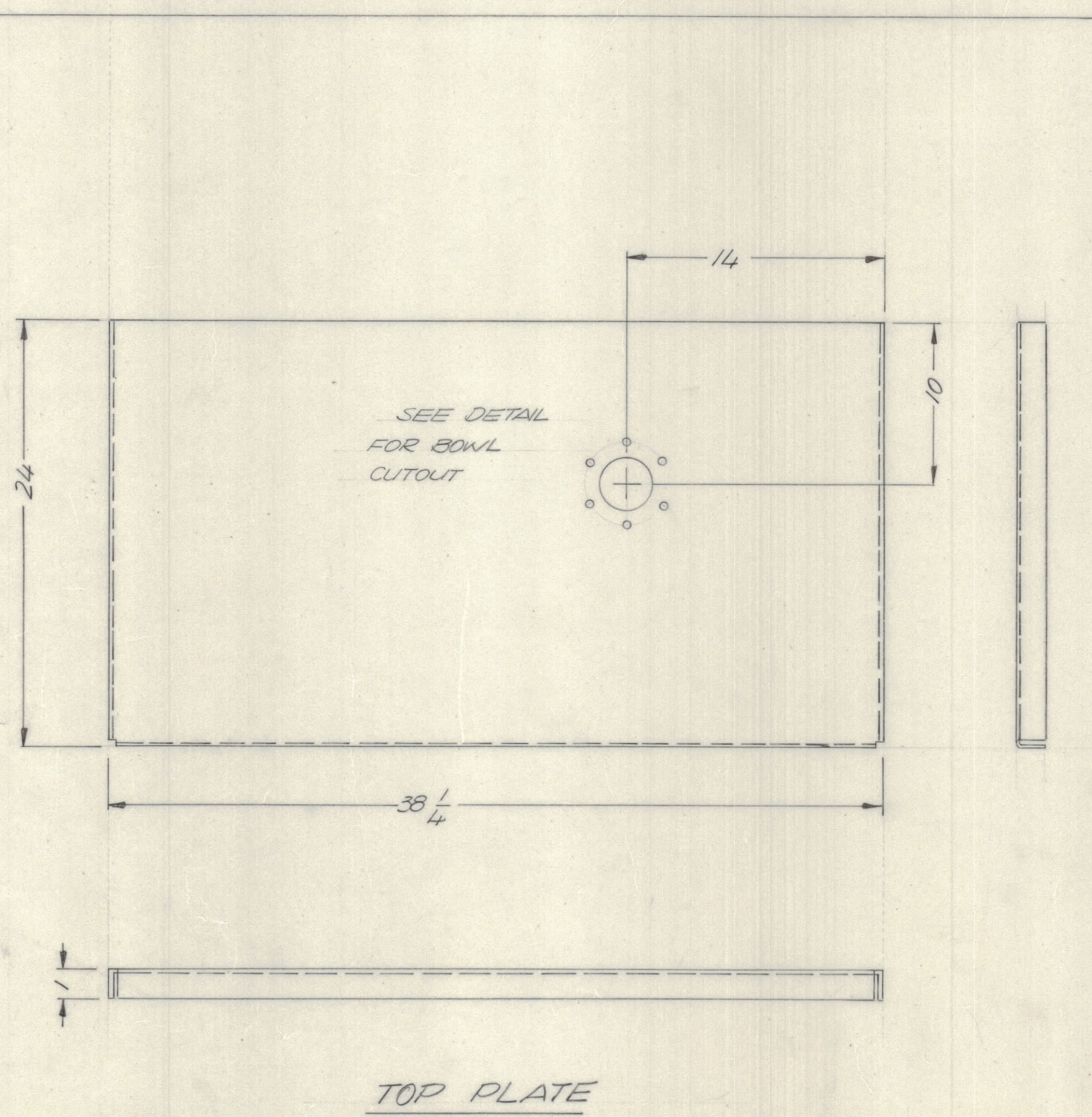
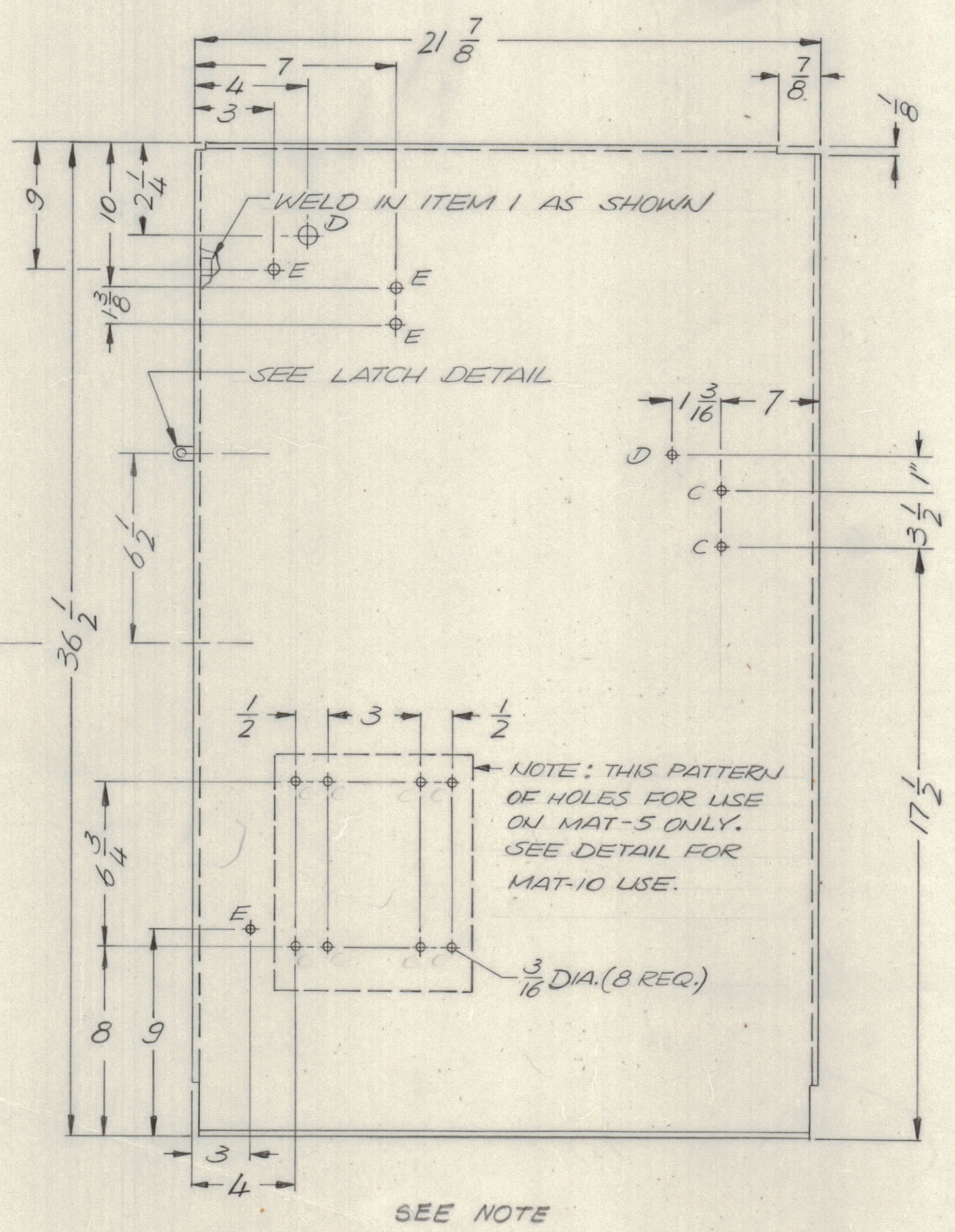
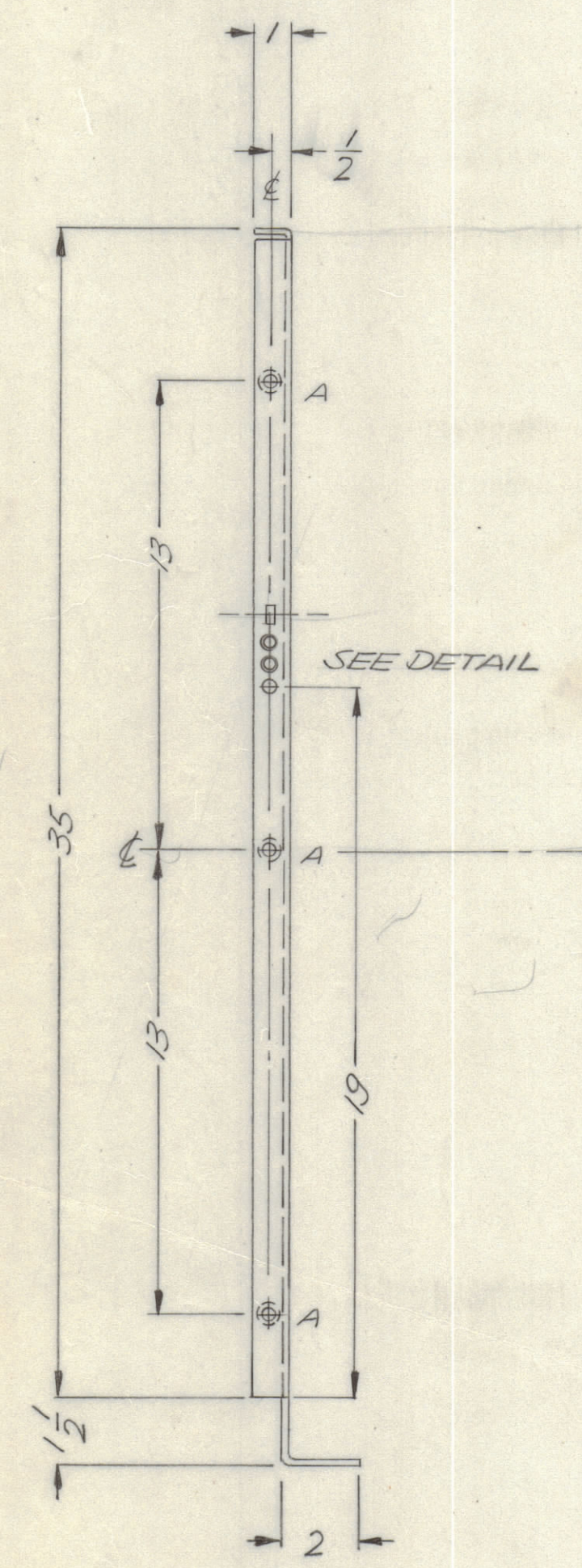
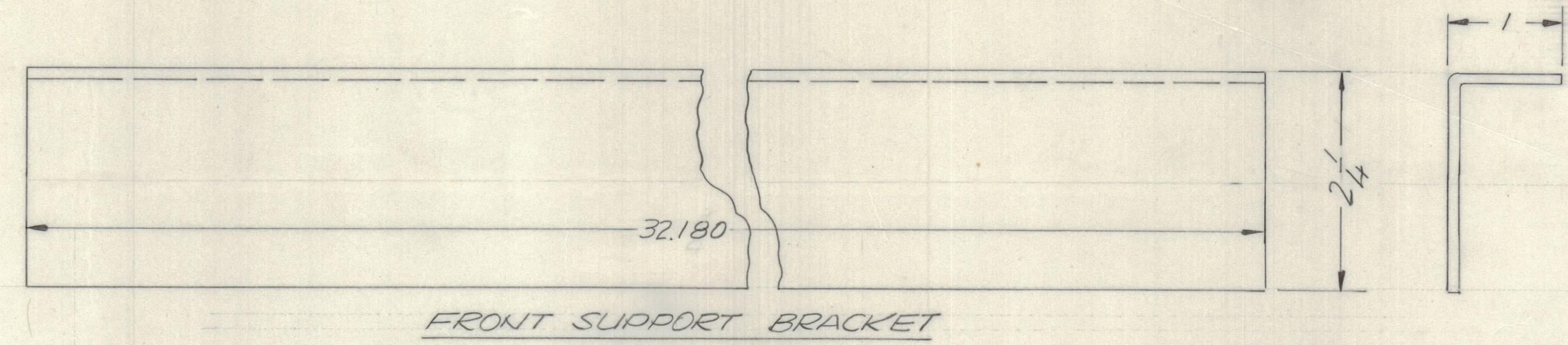
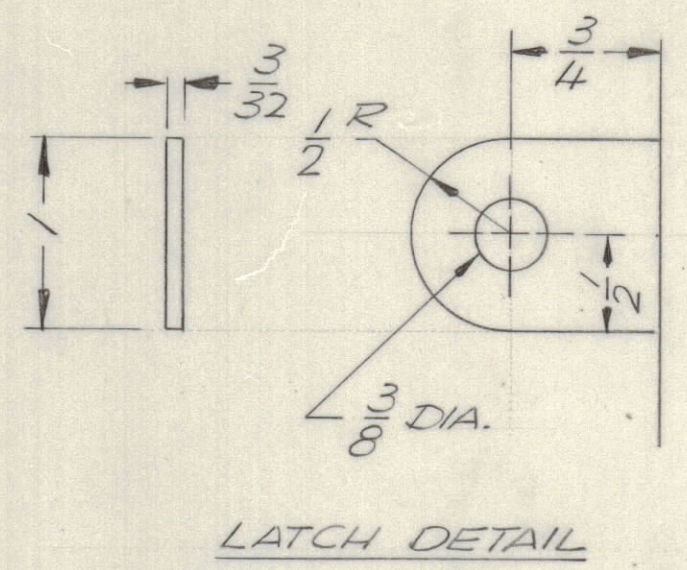
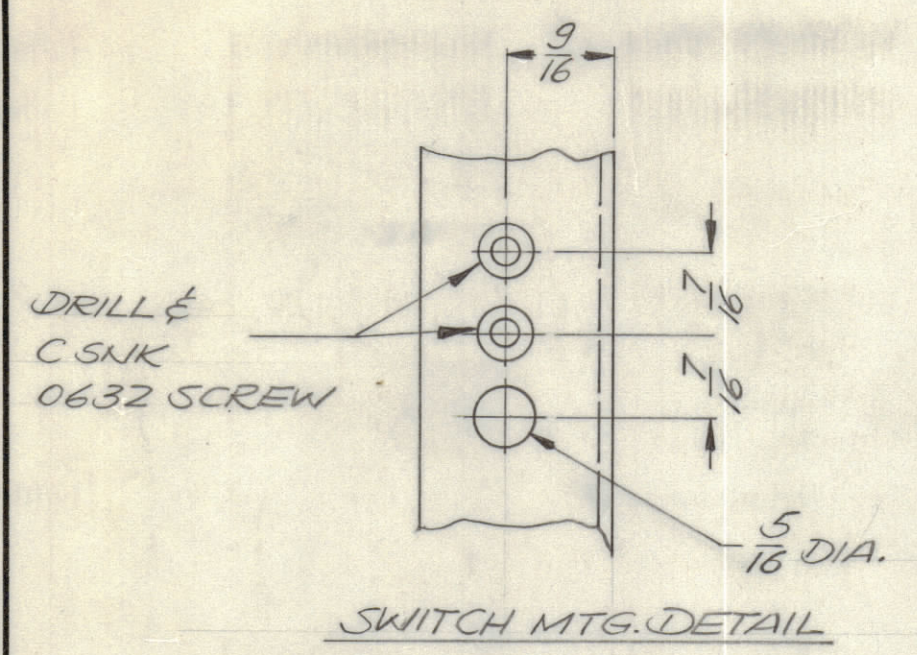
NOTE: DIMENSIONS GIVEN FOR REFERENCE.

- UNLESS OTHERWISE SPECIFIED:
- USE MATERIAL THICKNESS FOR MAXIMUM RADIUS ON ALL BENDS.
 - ALL ANGULAR BENDS 90 DEGREES.
 - REMOVE ALL BURRS AND SHARP EDGES.
 - MOUNT INSERTS AFTER FINISHING.

1	MAT 5	BMA 475
QTY / UNIT	MODEL USED ON	ASSY NO.
APPLICATION		
CODE		
NOTICE TO PERSONS RECEIVING THIS DRAWING		
THE TECHNICAL MATERIEL CORPORATION claims proprietary right in the material disclosed herein. This drawing is issued in confidence for engineering information only and may not be reproduced or used to manufacture anything shown hereon without permission from THE TECHNICAL MATERIEL CORPORATION to the user. This drawing is loaned for mutual assistance and is subject to recall at any time.		

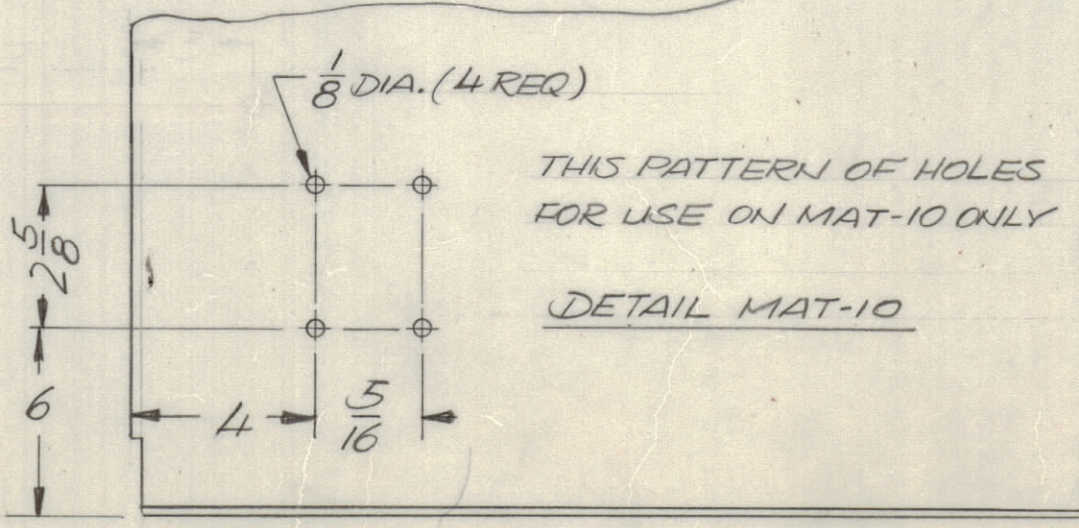
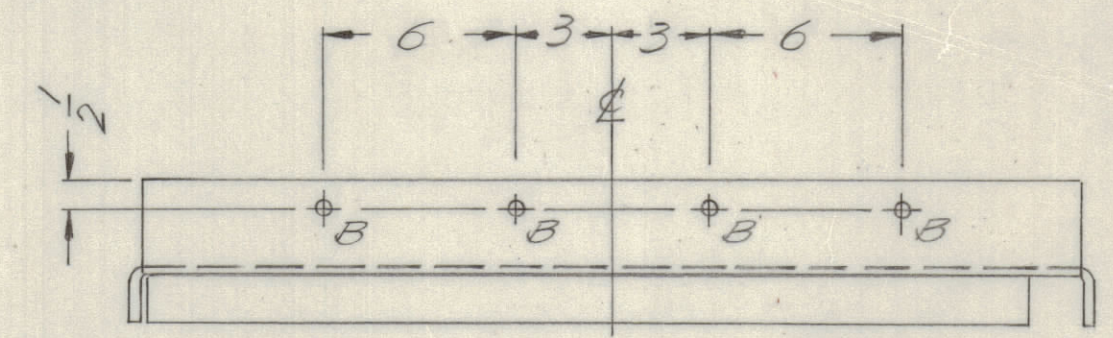
QTY. REQ.	ITEM	PART NO.	DESCRIPTION	SYMBOL
F. BUDETTI LIST OF MATERIAL				
FINAL APPROVAL		DATE	THE TECHNICAL MATERIEL CORP.	
MECH. DES.		DATE	MAMARONECK, NEW YORK	
ELECT. DES.		DATE	CHANNELIZED LF	
CHECKED		DATE	ANTENNA TUNER	
DRAWN		DATE	SIZE CODE IDENT NO. DWG NO.	
		6/17/71	D 82679 MS 6215	
MATERIAL			ISSUE	
13 GA. CRS.			A	
FINISH			SCALE NTS SHEET 1 OF 4	

REVISIONS							
E.M.N.O	DRAFT	CHKD	ZONE	LTR	DESCRIPTION	DATE	APPROVED
	0			0	ORIGINAL RELEASE FOR PRODUCTION	12/14/72	
				A	NOTE FOR LEFT SIDE PLATE CLARIFIED - SEE SHEET 4		



HOLE DESCRIPTION REQ.

A	15/64 DIA.	3
B	3/8 DIA.	4
C	1/64 DIA.	2
D	1/2 DIA.	2
E	3/64 DIA.	4



NOTE
RIGHT SIDE PLATE SHOWN, FOR LEFT SIDE USE OPPOSITE HAND MINUS ITEM 1, LATCH, & ALL HOLES

DIMENSIONS GIVEN FOR REFERENCE

- UNLESS OTHERWISE SPECIFIED:
- USE MATERIAL THICKNESS FOR MAXIMUM RADIUS ON ALL BENDS.
 - ALL ANGULAR BENDS 90 DEGREES.
 - REMOVE ALL BURRS AND SHARP EDGES.
 - MOUNT INSERTS AFTER FINISHING.

QTY / UNIT	MODEL USED ON	ASS'Y NO.
1	MAT 5	BMA 475
APPLICATION		
CODE		
MATERIAL		
FINISH		

QTY. REQ.	ITEM	PART NO.	DESCRIPTION	SYMBOL
3	1	NT 129 1032-6	NUT, SWAGE	A

F. BUDETTI

FINAL APPROVAL	DATE
028	12/12/72
MECH. DES.	DATE
BR	12/14/72
ELECT. DES.	DATE
CHECKED	DATE
DRAWN	DATE
GE	6/17/71

UNLESS OTHERWISE SPECIFIED DIMENSIONS ARE IN INCHES AND INCLUDE CHEMICALLY APPLIED OR PLATED FINISHES

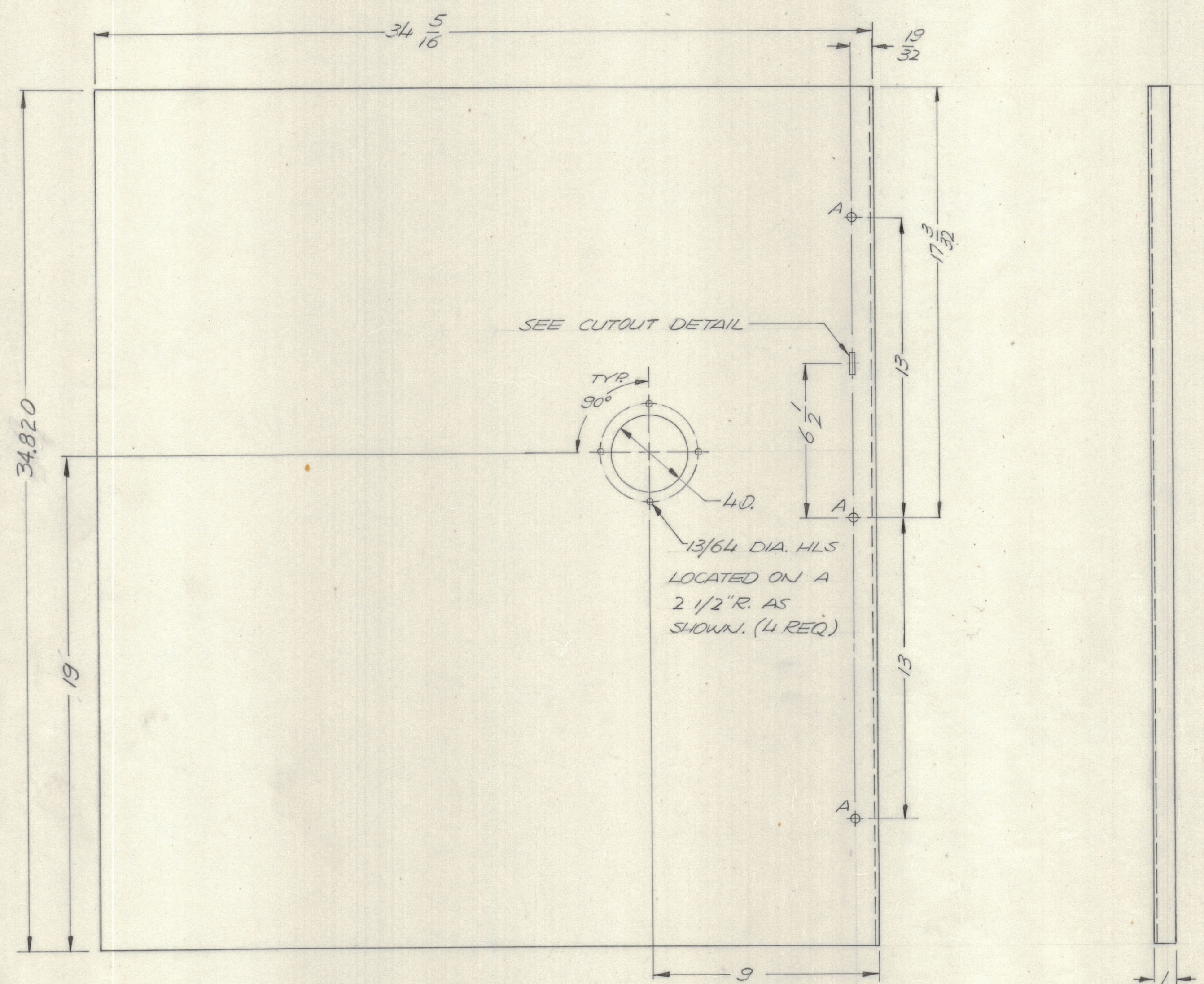
TOLERANCES ON
 DECIMALS .X ± .05
 .XX ± .01
 .XXX ± .005
 FRACTIONS ± 1/64
 ANGLES ± 0° - 30°

MATERIAL 13 GA CRS

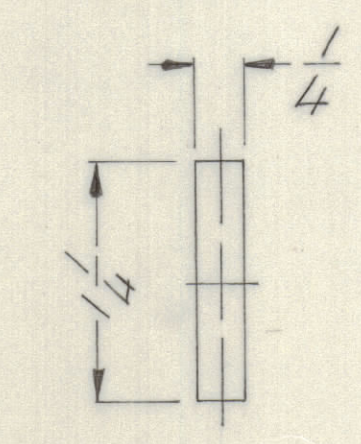
FINISH

THE TECHNICAL MATERIEL CORP. MAMARONECK, NEW YORK			
CHANNELIZED LF ANTENNA TUNER			
SIZE	CODE	IDENT NO.	DWG NO.
D	82679		MS 6215
SCALE			ISSUE
NENTS			A
SHEET 2			OF 4

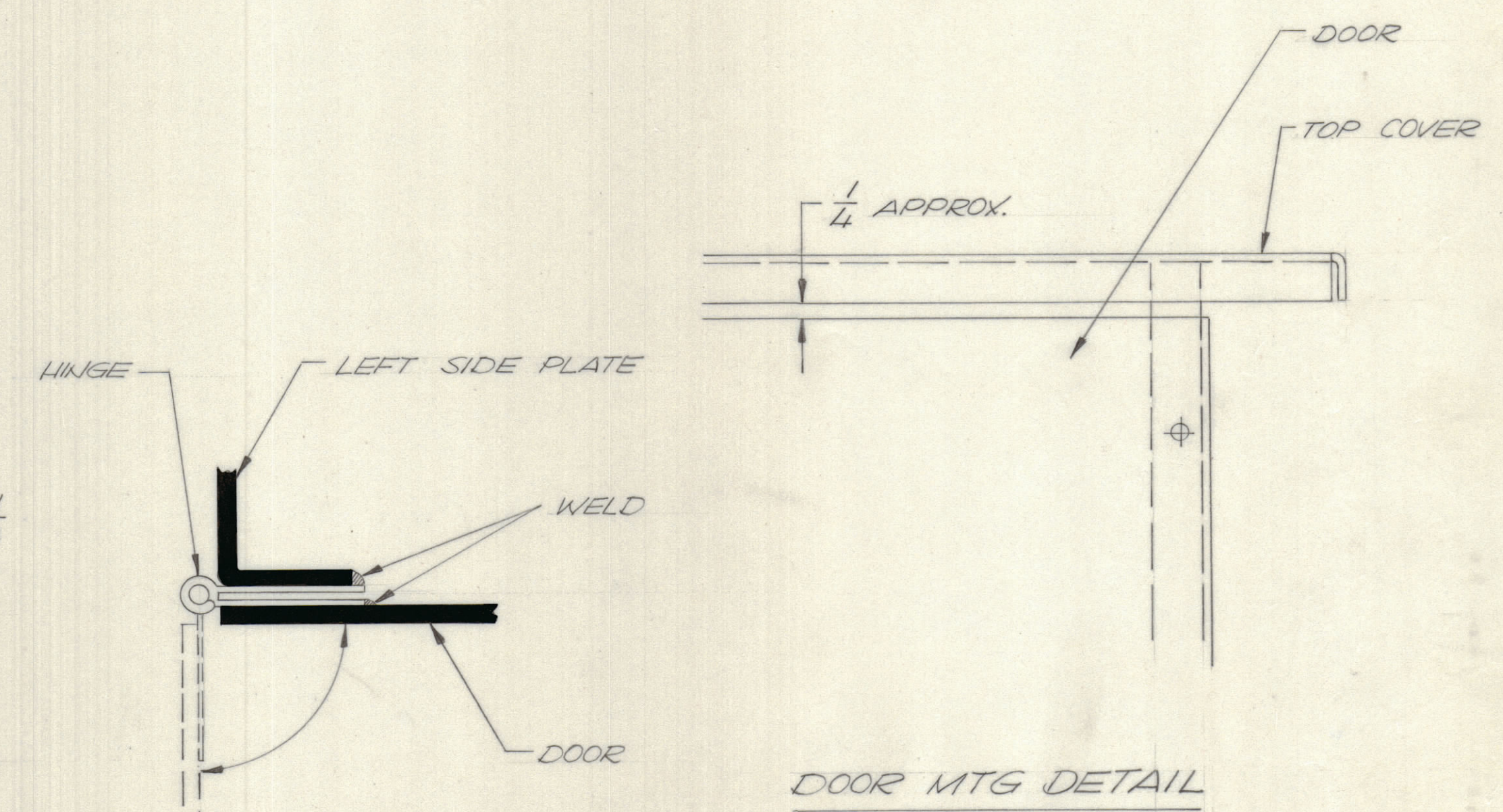
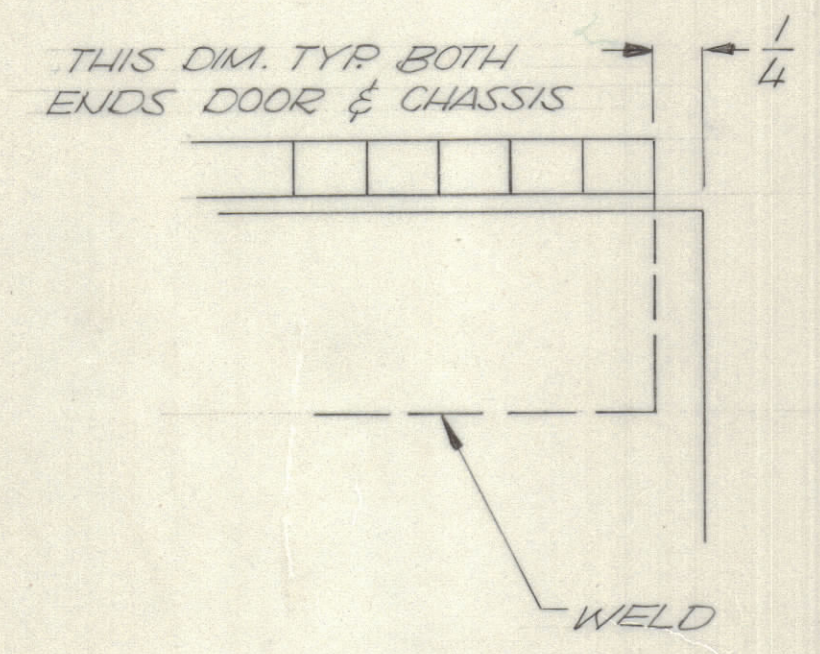
REVISIONS							
E.M.N.O	DRAFT	CHKD	ZONE	LTR	DESCRIPTION	DATE	APPROVED
	(D)			A	ORIGINAL RELEASE FOR PRODUCTION	12/14/72	
					SEE SHEET 2 & 4	5-10-77	



DOOR



HOLE A - 15/64 DIA. - 3 REQ.



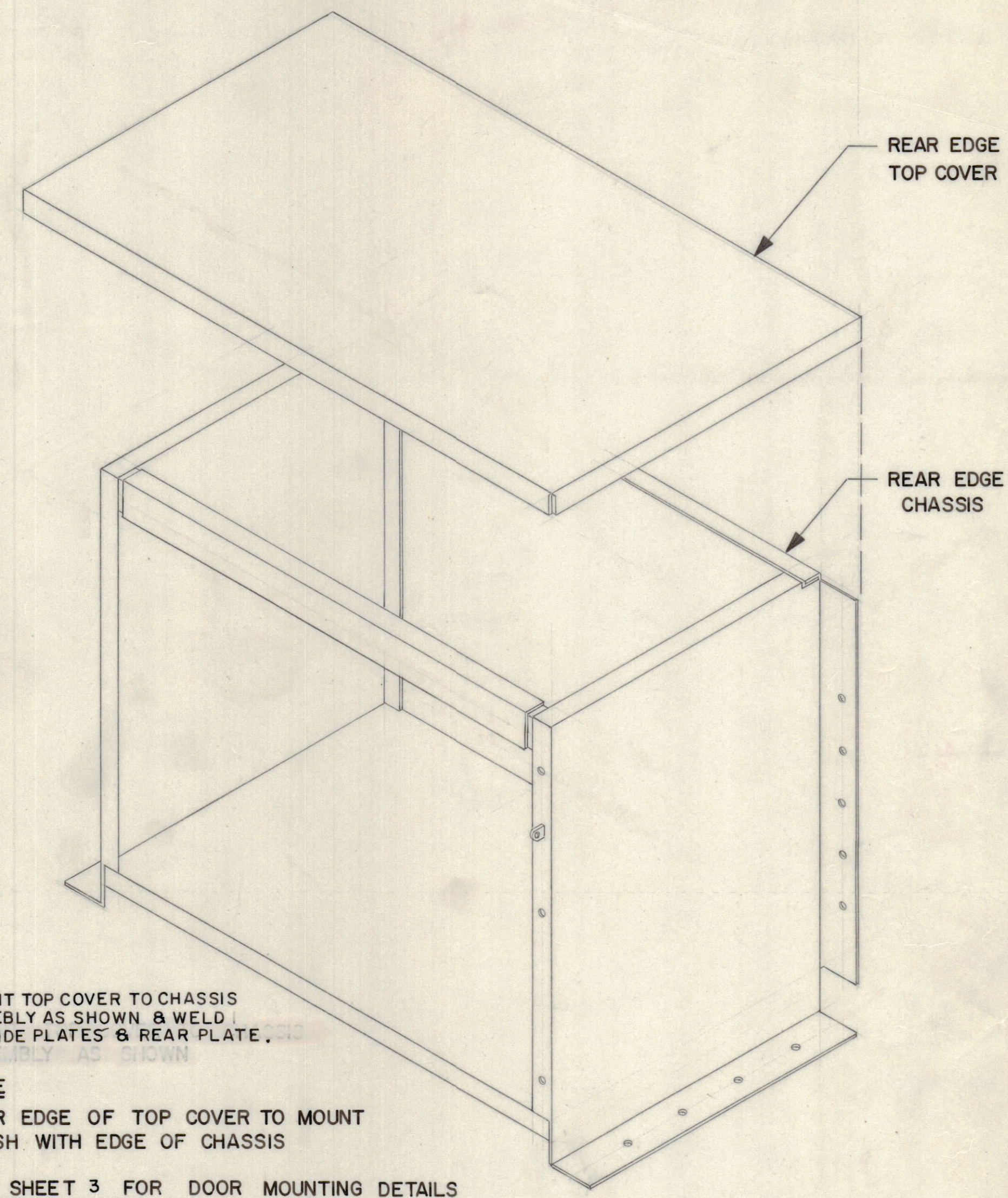
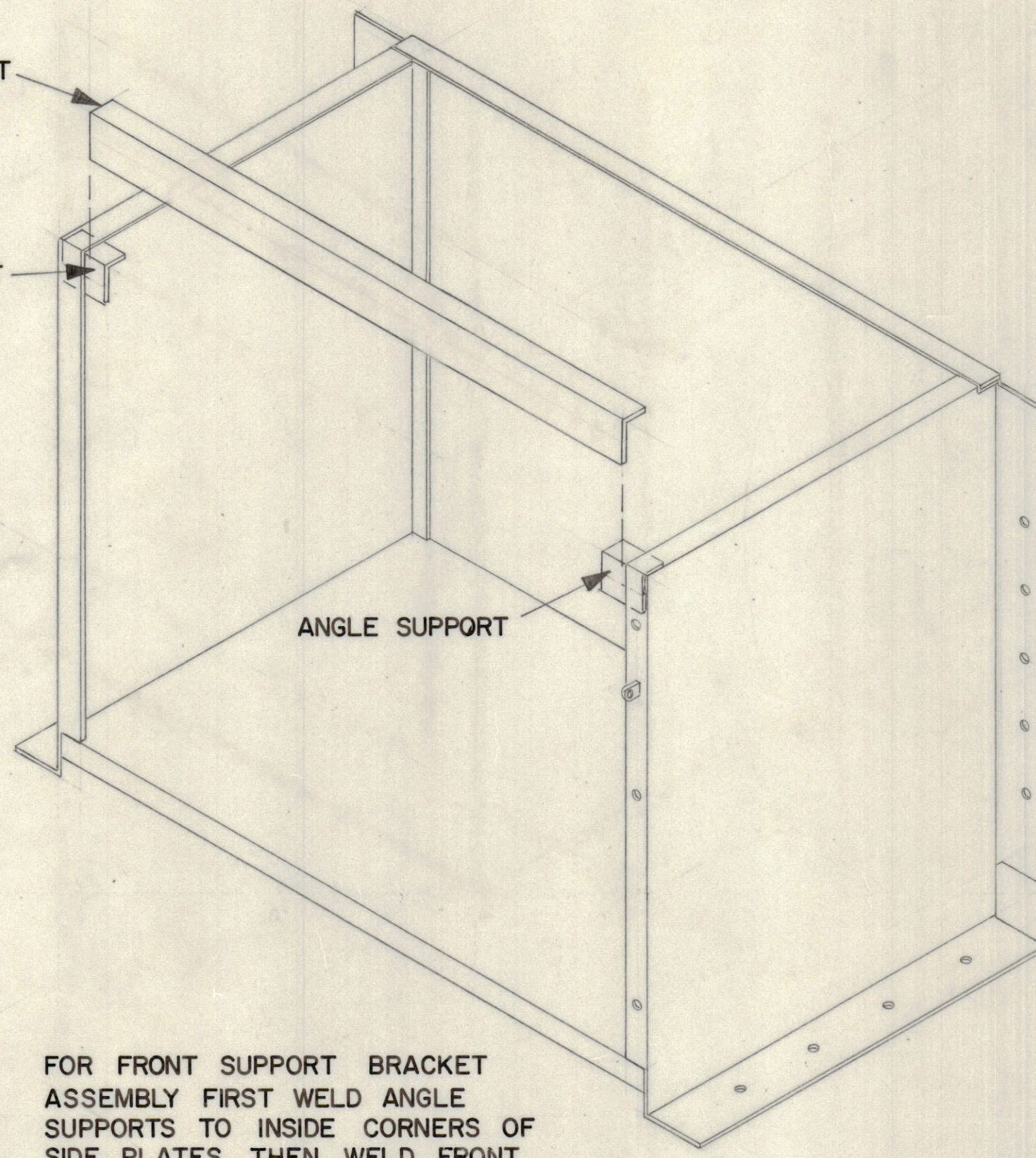
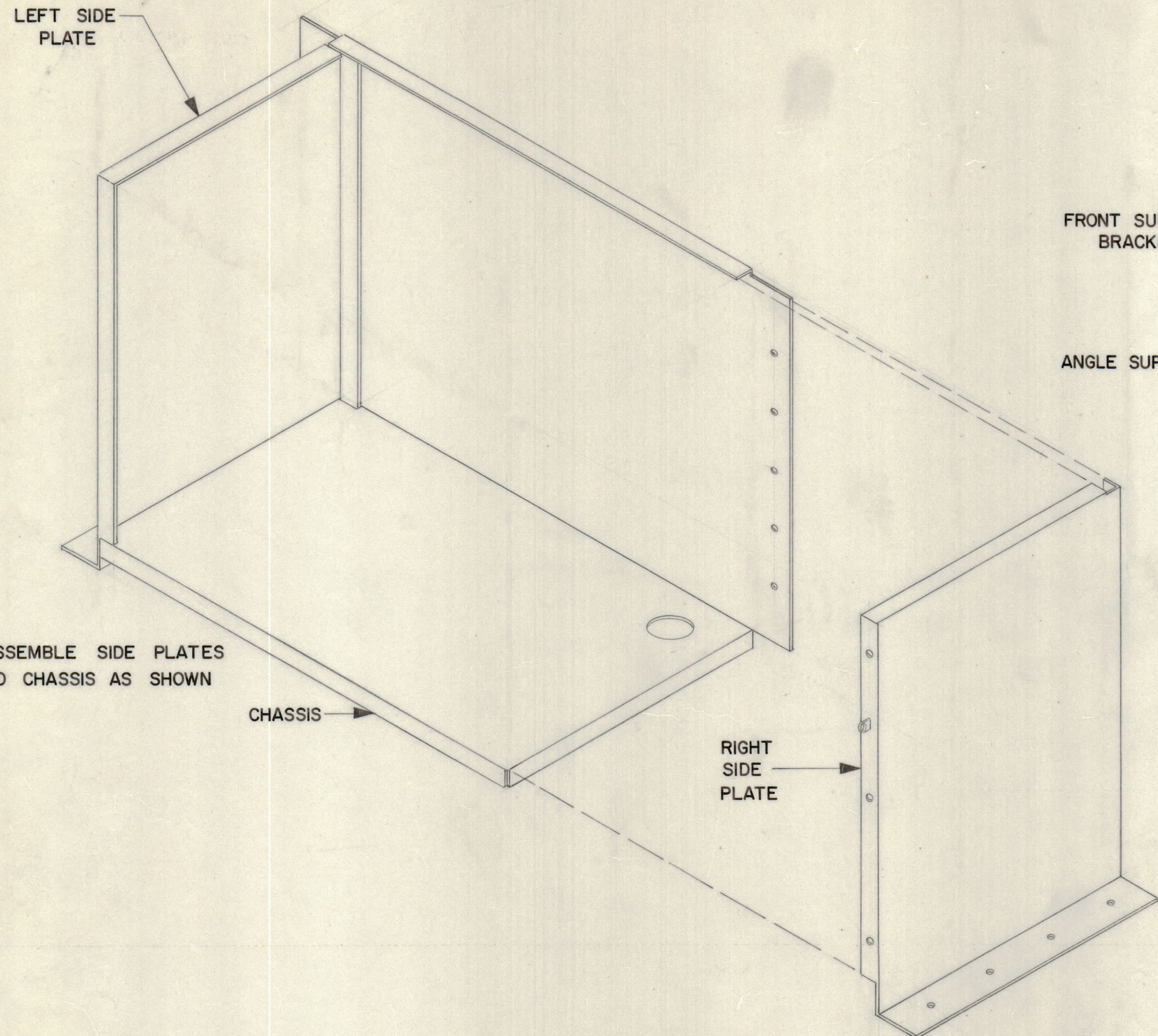
- UNLESS OTHERWISE SPECIFIED:
1. USE MATERIAL THICKNESS FOR MAXIMUM RADIUS ON ALL BENDS.
 2. ALL ANGULAR BENDS 90 DEGREES.
 3. REMOVE ALL BURRS AND SHARP EDGES.
 4. MOUNT INSERTS AFTER FINISHING.

1	MAT-5	BMA 475
QTY / UNIT	MODEL USED ON	ASS'Y NO.
APPLICATION		
CODE		
<small>NOTICE TO PERSONS RECEIVING THIS DRAWING</small> <small>THE TECHNICAL MATERIEL CORPORATION claims proprietary right in the material disclosed hereon. This drawing is issued in confidence for engineering information only and may not be reproduced or used to manufacture anything shown hereon without permission from THE TECHNICAL MATERIEL CORPORATION to the user. This drawing is loaned for mutual assistance and is subject to recall at any time.</small>		

QTY. REQ.	ITEM	PART NO.	DESCRIPTION	SYMBOL
E. BUDETTI LIST OF MATERIAL				
FINAL APPROVAL		DATE	THE TECHNICAL MATERIEL CORP.	
MECH. DES.		DATE	MAMARONECK, NEW YORK	
ELECT. DES.		DATE	CHANNELIZED LF	
CHECKED		DATE	ANTENNA TUNER	
DRAWN		DATE	SIZE	CODE IDENT NO. DWG NO.
			D	82679 MS 6215
			SCALE	ISSUE
			N/T	A
				SHEET 3 OF 4

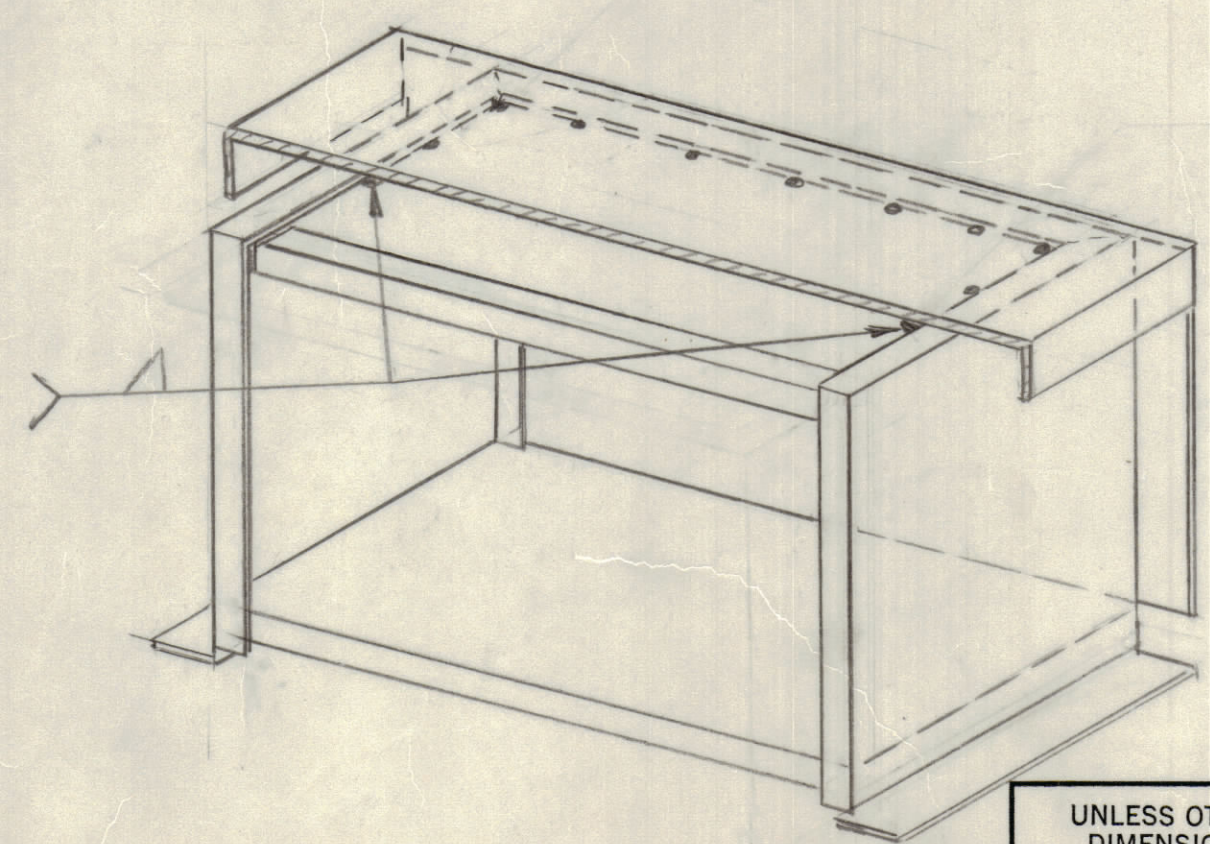
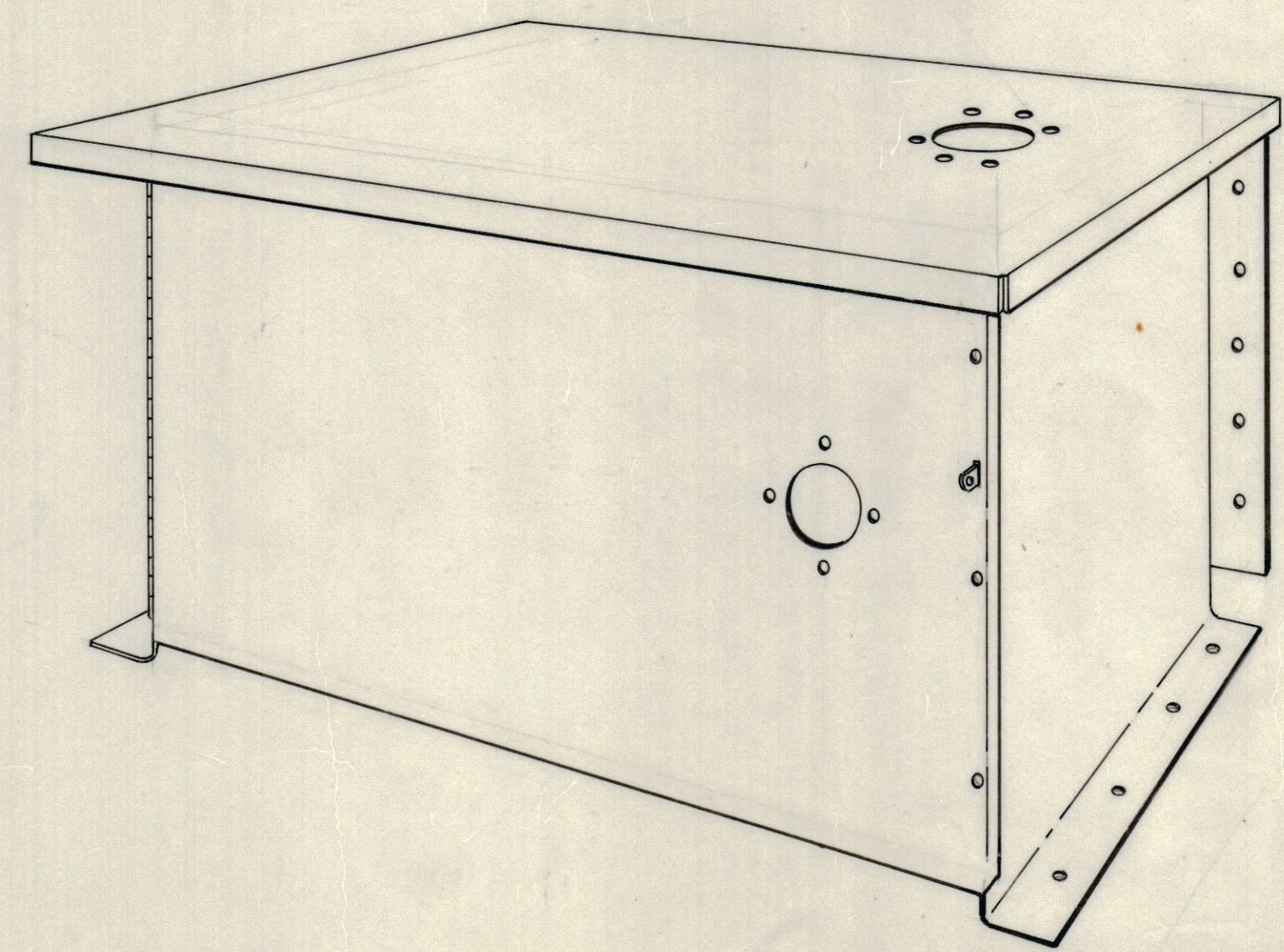
NOTE: DIMENSIONS GIVEN FOR REFERENCE ONLY.

REVISIONS							
E.M.N.NO	DRAFT	CHKD	ZONE	LTR	DESCRIPTION	DATE	APPROVED
	CU			Ø	ORIGINAL RELEASE FOR PRODUCTION	10/14/70	
				A	ASSY NOTE FOR TOP COVER CLARIFIED, PICTORIAL ADDED. SEE SH. 2	5-10-77	



NOTE
 REAR EDGE OF TOP COVER TO MOUNT FLUSH WITH EDGE OF CHASSIS
 SEE SHEET 3 FOR DOOR MOUNTING DETAILS SPOTWELD CONST.

ASSEMBLED UNIT
 CHANNELIZED
 L F
 ANTENNA
 TUNER



1	MAT 5	BHA 475
QTY / UNIT	MODEL USED ON	ASS'Y NO.
APPLICATION		
CODE		
NOTICE TO PERSONS RECEIVING THIS DRAWING		
THE TECHNICAL MATERIEL CORPORATION claims proprietary right in the material disclosed herein. This drawing is issued in confidence for engineering information only and may not be reproduced or used to manufacture anything shown herein without permission from THE TECHNICAL MATERIEL CORPORATION to the user. This drawing is loaned for mutual assistance and is subject to recall at any time.		

UNLESS OTHERWISE SPECIFIED DIMENSIONS ARE IN INCHES AND INCLUDE CHEMICALLY APPLIED OR PLATED FINISHES

TOLERANCES ON
 DECIMALS FRACTIONS
 .X ± .05 ± 1/64
 .XX ± .01 ANGLES
 .XXX ± .005 ± 0° -30'

QTY. REQ.	ITEM	PART NO.	DESCRIPTION	SYMBOL
F. BUDETTI LIST OF MATERIAL				
FINAL APPROVAL		DATE	THE TECHNICAL MATERIEL CORP.	
MECH. DES.		DATE	MAMARONECK, NEW YORK	
ELECT. DES.		DATE	CHANNELIZED LF	
CHECKED		DATE	ANTENNA TUNER	
DRAWN		DATE	SIZE CODE IDENT NO. DWG NO.	
		DATE	D 82679 MS 6215	
		DATE	SCALE NTS SHEET 4 OF 4	