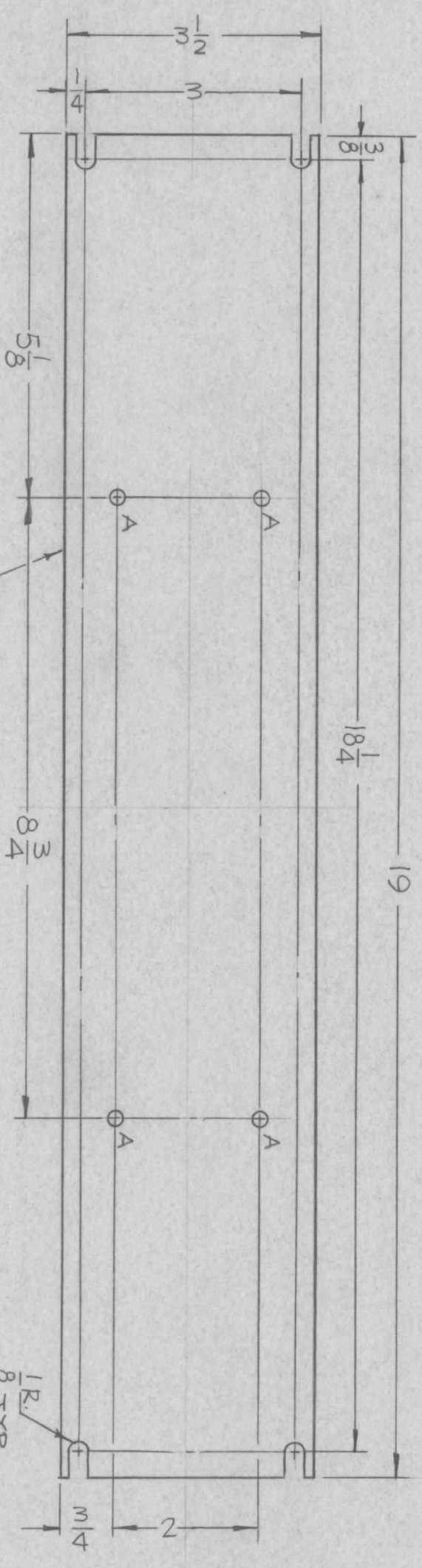


REVISIONS						
ZONE	LTR	DESCRIPTION	DATE	E.M.N.NO	DRAFT	CHKD
	X	EXP. RELEASE	2-16			
	Ø	ORIG RELEASE FOR PROD	4-6-67	Ø		CV



HOLES:  
A - 11/64 DIA. (4 REQ.)

MARK TMC P/N (MS 6091-1)  
HIGH GOTHIC W/LATEST  
REV. LETTER.  
(ON REAR)

QTY / UNIT	1	MODEL USED ON	SBT-1KPA2	ASS'Y NO.	
APPLICATION		CODE	5401-		
S401-4S1			A		
S401-					

UNLESS OTHERWISE SPECIFIED DIMENSIONS ARE IN INCHES AND INCLUDE CHEMICALLY APPLIED OR PLATED FINISHES	FRACTIONS	1/64
DECIMALS	TOLS.	ANGLES
X ± .05		0° - 30'
.XX ± .01		
.XXX ± .005		
MATERIAL	1/8 THK ALUMINUM 5052-H32	
FINISH	S404 YEL. IRIDITE	

REQ'D ITEM	PART NUMBER	DESCRIPTION	SYM.
LIST OF MATERIAL			
THE TECHNICAL MATERIEL CORP.			
MAMARONECK, NEW YORK			

FINAL APPROVAL	DATE	7/8/65
MECH. DES.	DATE	6/22/62
ELECT. DES.	DATE	
CHECKED	DATE	
DRAWN	DATE	2-12-67
PLATE, MTG FILTER		
SIZE	CODE IDENT. NO.	DWG NO.
B	82679	MS6091
SCALE	1:2	SHEET
		OF
		ISSUE
		Ø

NOTICE TO PERSONS RECEIVING THIS DRAWING  
THE TECHNICAL MATERIEL CORPORATION claims proprietary right in the material disclosed hereon. This drawing is issued in confidence for engineering information only and may not be reproduced or used to manufacture anything shown hereon without permission from THE TECHNICAL MATERIEL CORPORATION to the user. This drawing is loaned for mutual assistance and is subject to recall at any time.