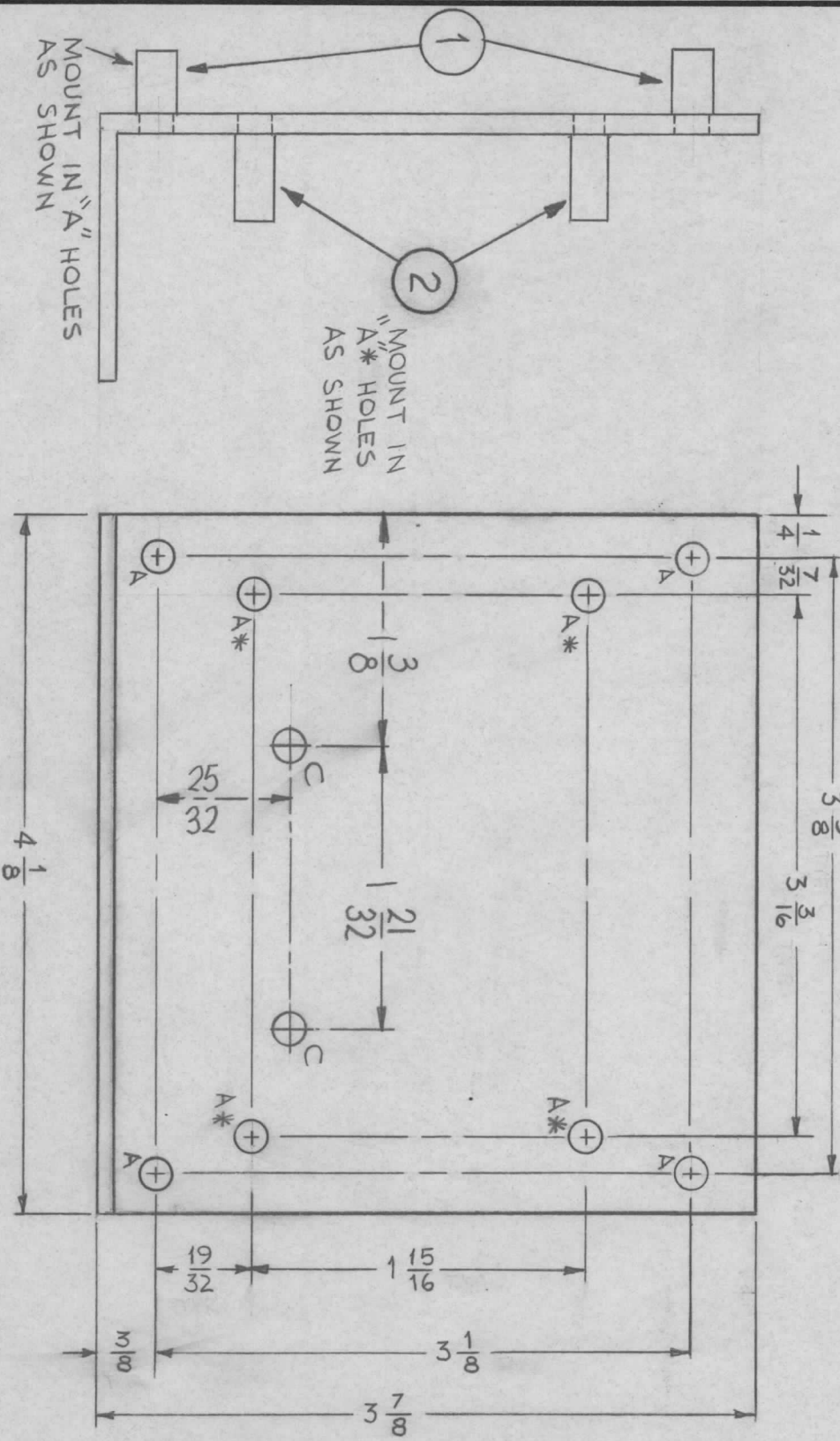
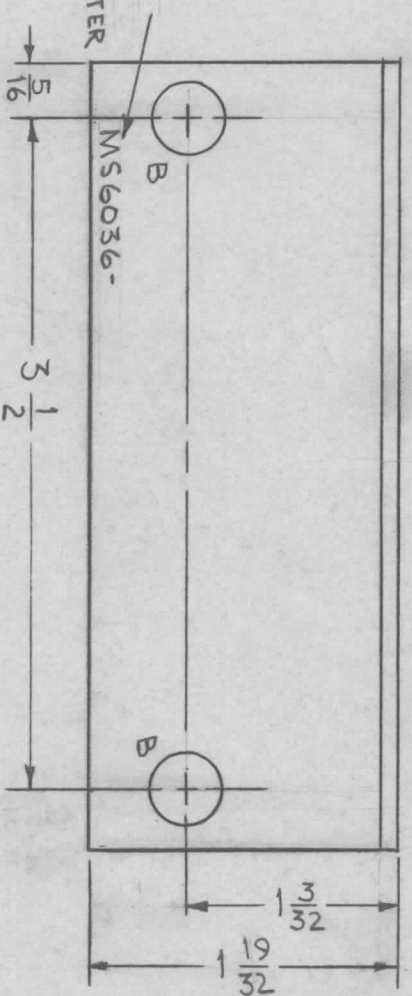


MARK TMC PART NO.
1/8 HIGH GOTHIC
W/LATEST REVISION LETTER



MS6036 A

SYMBOL		DESCRIPTION		DATE	E.M.N. NO.	DRAFT	CHKD	APPD
X	EXPERIMENTAL RELEASE			11/21/66	X	RME		
Ø	ORIGINAL RELEASE FOR PRODUCTION			4-3-67	Ø	CV		
A	2C HOLES, SMEC-1/SMEC-1 ADDED, SMEC-1 DEL.			6-22-67	18291	WFD		

HOLE	DESCRIPTION	REQ.
A	.189 DIA.	8
B	3/8 DIA.	2
C	3/16 DIA.	2

A = MOUNT ITEM 1.
A* = MOUNT ITEM 2.

REQD.	ITEM	PART NUMBER	DESCRIPTION	SYMBOL
4	2	TE 108-19	NUT, PLAIN, CLINCH	A*
4	1	TE 108-11	NUT, PLAIN, CLINCH	A

MATERIAL		TITLE	
.081 THK. ALUMINUM 5052-H32		BRACKET, MOUNTING, PC BOARD	
FINISH S 404 YELLOW IRIDITE		MAMARONECK, NEW YORK	

UNLESS OTHERWISE SPECIFIED		DIMENSIONS ARE IN INCHES AND INCLUDE CHEMICALLY APPLIED OR PLATED FINISHES	
DECIMALS	X ± .05 .XX ± .01 .XXX ± .005	TOLERANCES	FRACTIONS ± 1/64 ANGLES ± 0° 30'

UNLESS OTHERWISE SPECIFIED:

1. USE MATERIAL THICKNESS FOR MAXIMUM RADIUS ON ALL BENDS
2. ALL ANGULAR BENDS 90 DEGREES
3. REMOVE ALL BURRS AND SHARP EDGES
4. MOUNT INSERTS AFTER FINISHING

NOTES

THE CONTENTS OF THIS DRAWING ARE THE EXCLUSIVE PROPERTY OF THE TECHNICAL MATERIAL CORP. ITS UNAUTHORIZED USE OR REPRODUCTION IN WHOLE OR IN PART IS STRICTLY FORBIDDEN.

QTY./UNIT	MODEL USED ON	ASSY. NO.
	SMEC-1	
SCALE	CODE	