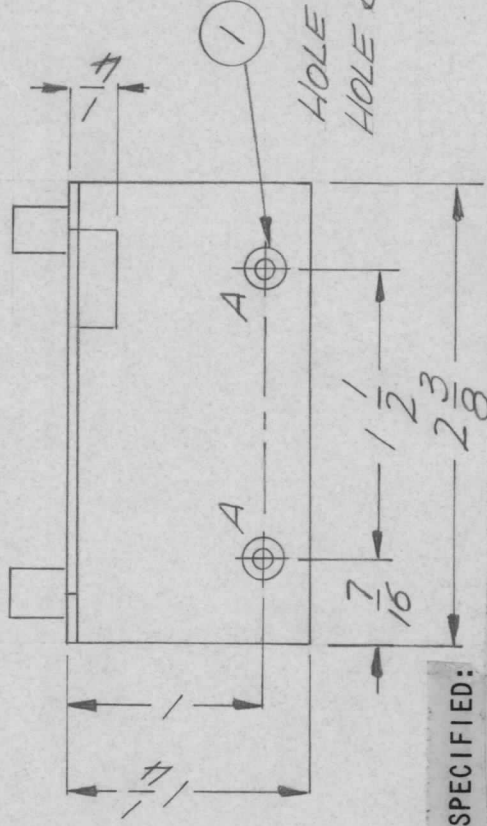
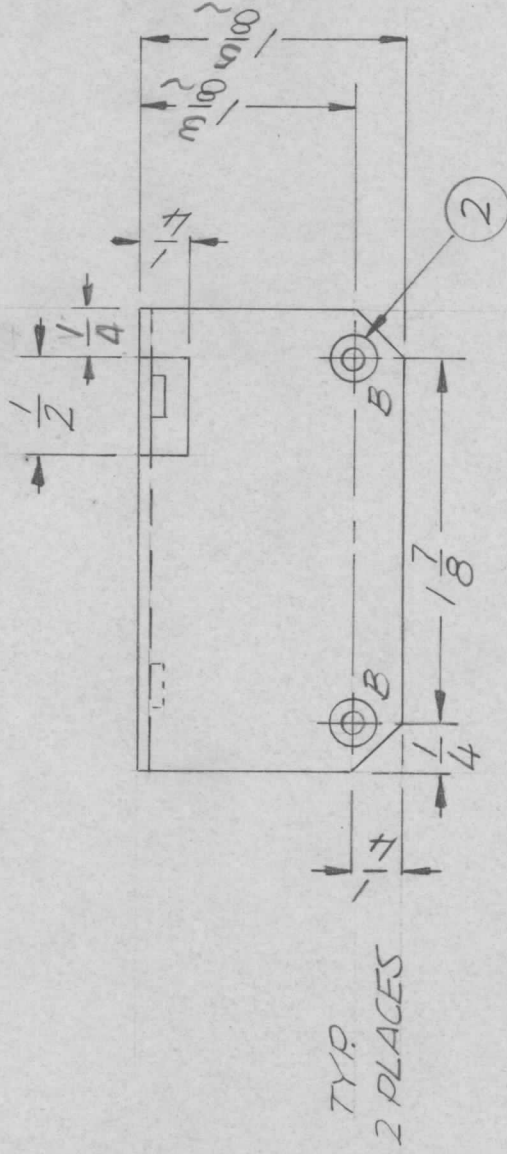


APPLICATION

QTY	MODEL USED ON	ASSY NO.
1	TLA-1K	BNA468

REVISIONS

LTR	DESCRIPTION	DATE	E.M.N.NO	DRAFT	CHKD	APPD
Ø	ORIG RELEASE FOR PROD	6/24/71		CV		RED
A	DIMS. 1 5/8 WAS 1 3/8 & 1 3/8 WAS 1 1/8	5-24-76	21377	GBL	Ch	Cl.



HOLE A - .191 - .194 ~ 2
HOLE B - 3/16 DIA. ~ 2

UNLESS OTHERWISE SPECIFIED:

1. USE MATERIAL THICKNESS FOR MAXIMUM RADIUS ON ALL BENDS.
2. ALL ANGULAR BENDS 90 DEGREES.
3. REMOVE ALL BURRS AND SHARP EDGES.
4. MOUNT INSERTS AFTER FINISHING.

2	2	TE108-6	NUT PLN CLINCE	B
2	1	NT129-632-4	NUT PLN SPLINE	A
REQ'D ITEM	PART NUMBER	DESCRIPTION	SYM.	

LIST OF MATERIAL

FINAL APPROVAL	DATE	THE TECHNICAL MATERIEL CORP.		
<i>[Signature]</i>	2/16/71	MAMARONECK, NEW YORK		
MECH. DES.	DATE	BRACKET, MTG.		
<i>[Signature]</i>	2/16/71	IPA TUNE SENSE		
ELECT. DES.	DATE			
CHECKED	DATE			
DRAWN	DATE			
GE	4.5.71			

UNLESS OTHERWISE SPECIFIED DIMENSIONS ARE IN INCHES AND INCLUDE CHEMICALLY APPLIED OR PLATED FINISHES

DECIMALS .X ± .05
.XX ± .01
.XXX ± .005

FRACTIONS 1/64
TOLS. 0° - 30°

MATERIAL 064 ALLUM 5052 H32

FINISH S404 VEL. IRDITE

NOTICE TO PERSONS RECEIVING THIS DRAWING
THE TECHNICAL MATERIEL CORPORATION claims proprietary right in the material disclosed hereon. This drawing is issued in confidence for engineering information only and may not be reproduced or used to manufacture anything shown hereon without permission from THE TECHNICAL MATERIEL CORPORATION to the user. This drawing is loaned for mutual assistance and is subject to recall at any time.

SIZE	CODE IDENT. NO.	DWG NO.	ISSUE
A	82679	M55967	A
SCALE	1:1	SHEET	OF