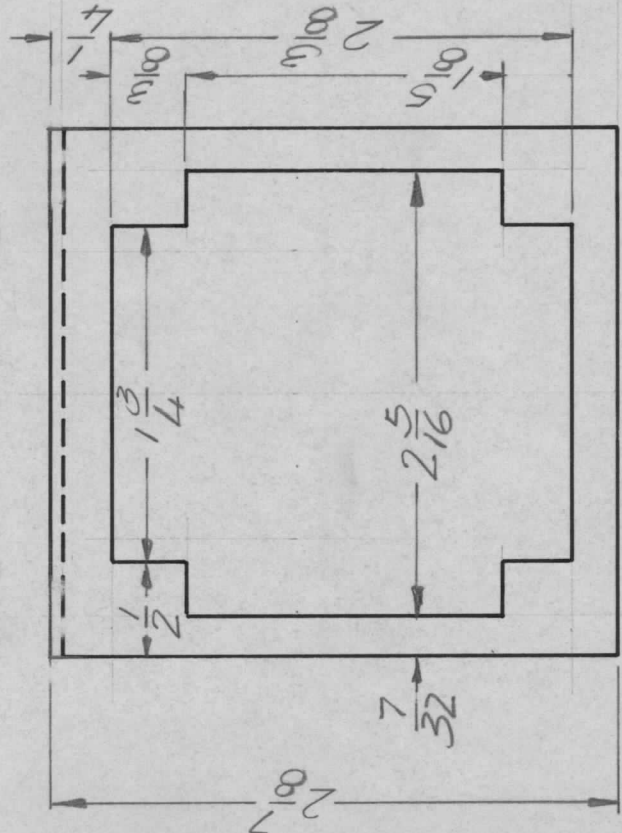
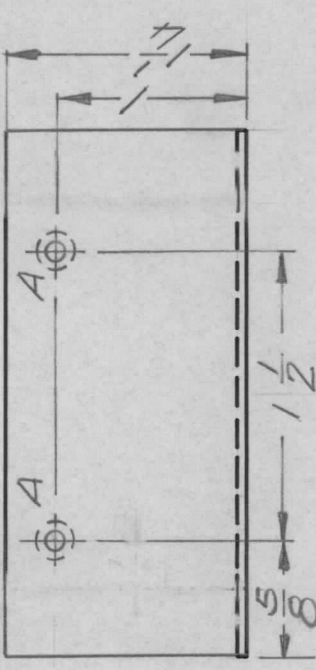


APPLICATION			REVISIONS						
QTY	MODEL USED ON	ASS'Y NO.	LTR	DESCRIPTION	DATE	E.M.N.NO	DRAFT	CHKD	APPD
1	HFT(-) - 1K	APP18	A	COMPLETELY REDRAWN	5/8/73		GE	EJ	J
1	HFTM - 1K	AP149							



① MOUNT AS SHOWN

A HOLE - .191 - .194 DIA - 2 REQ.

REQ'D ITEM	PART NUMBER	DESCRIPTION	SYM.
2	1	NT1290632-4 NUT ROUND	A
F.B.			
FINAL APPROVAL	DATE	LIST OF MATERIAL	
BA	10 MAR 71	THE TECHNICAL MATERIEL CORP.	
MECH. DES.	DATE	MAMARONECK, NEW YORK	
AC	10 MAR 71	BRKT. PROTECTIVE COVER MTG.	
ELECT. DES.	DATE		
CHECKED	DATE		
DRAWN	DATE		
GE	5/7/73		

UNLESS OTHERWISE SPECIFIED DIMENSIONS ARE IN INCHES AND INCLUDE CHEMICALLY APPLIED OR PLATED FINISHES

DECIMALS .X ± .05 TOLS. 1/64  
 .XX ± .01 ANGLES 0° - 30°  
 .XXX ± .005

MATERIAL .051 ALUM.  
 5052 H32

FINISH S404  
 YEL. IRIDITE

NOTICE TO PERSONS RECEIVING THIS DRAWING  
 THE TECHNICAL MATERIEL CORPORATION claims proprietary right in the material disclosed hereon. This drawing is issued in confidence for engineering information only and may not be reproduced or used to manufacture anything shown hereon without permission from THE TECHNICAL MATERIEL CORPORATION to the user. This drawing is loaned for mutual assistance and is subject to recall at any time.

SIZE	CODE IDENT. NO.	DWG NO.	ISSUE
A	82679	MS 5958	A
SCALE	1:1	SHEET	OF