

APPLICATION

REVISIONS

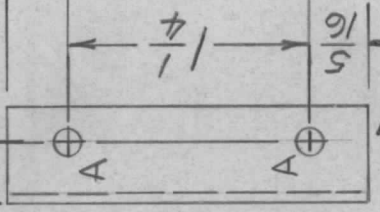
QTY	MODEL USED ON	ASS'Y NO.	LTR	DESCRIPTION	DATE	E.M.N.NO	DRAFT	CHKD	APPD
1	LPFB-2 (G)	AX5126	Ø	ORIGINAL RELEASE	1/24/70		Ø		

6 1/16

5 7/8

3 7/8

1/2
5/16



HOLE	DESCRIPTION	REQ.
A	9/64 DIA.	7
B	1/4 DIA.	1

OPP. SIDE IS IDENTICAL

UNLESS OTHERWISE SPECIFIED DIMENSIONS ARE IN INCHES AND INCLUDE CHEMICALLY APPLIED OR PLATED FINISHES	REQ'D ITEM	PART NUMBER	DESCRIPTION	SYM.
DECIMALS X ± .05 .XX ± .01 .XXX ± .005	F. BUDETTI		LIST OF MATERIAL	
FRACTIONS 1/64	FINAL APPROVAL <i>[Signature]</i>		THE TECHNICAL MATERIEL CORP.	
TOLS. ANGLES 0°-30°	MECH. DES. ALP. <i>[Signature]</i>		MAMARONECK, NEW YORK	
MATERIAL .064	ELECT. DES.		CENTERSHIELD, MOD.	
ALUM. 5052-H32	CHECKED			
FINISH	DRAWN A. PETROCCA			
S404 YEL.IRIDITE	DATE 10-70			

SIZE	CODE IDENT. NO.	DWG NO.	ISSUE
A	82679	MS 5694	Ø
SCALE	SHEET	OF	

NOTICE TO PERSONS RECEIVING THIS DRAWING
THE TECHNICAL MATERIEL CORPORATION claims proprietary right in the material disclosed hereon. This drawing is issued in confidence for engineering information only and may not be reproduced or used to manufacture anything shown hereon without permission from THE TECHNICAL MATERIEL CORPORATION to the user. This drawing is loaned for mutual assistance and is subject to recall at any time.