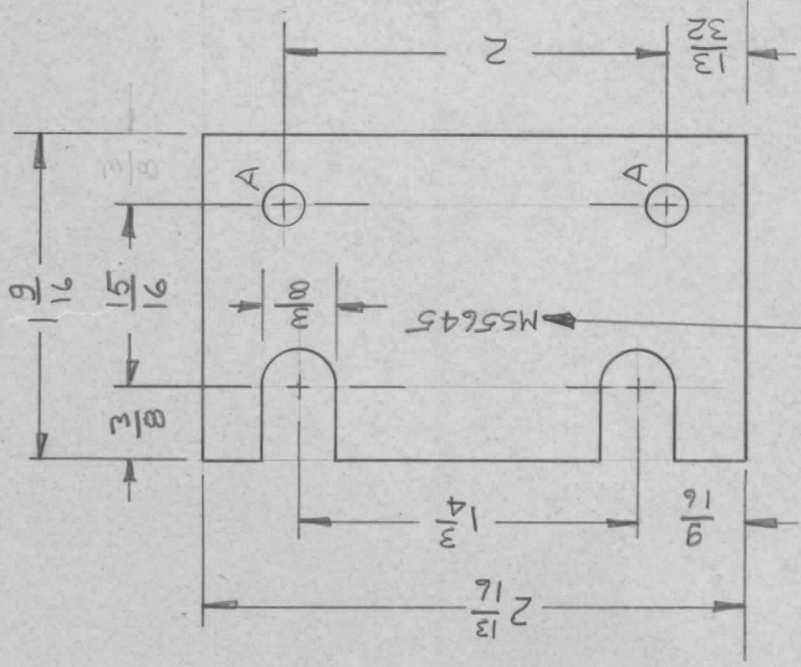


APPLICATION

REVISIONS

QTY	MODEL USED ON	ASS'Y NO.	LTR	DESCRIPTION	DATE	E.M.N.NO	DRAFT	CHKD	APPD
2	APP-18		Φ	ORIGINAL RELEASE	8/27/70		Co.		



A ~ 13/64 DIA. 2 REQ.

MARK TMC PART NUMBER
1/8 HIGH GOTHIC WITH LATEST
REVISION LETTER

UNLESS OTHERWISE SPECIFIED DIMENSIONS ARE IN INCHES AND INCLUDE CHEMICALLY APPLIED OR PLATED FINISHES	REQ'D ITEM	PART NUMBER	DESCRIPTION	SYM.
DECIMALS X ± .05 .XX ± .01 .XXX ± .005	BUDETTI		LIST OF MATERIAL	
FRACTIONS 1/64 ANGLES 0°-30°	FINAL APPROVAL <i>[Signature]</i>		THE TECHNICAL MATERIEL CORP. MAMARONECK, NEW YORK	
MATERIAL .064 ALUM 5052-H32	MECH. DES. <i>[Signature]</i>		PLATE, SHIM	
FINISH S404 YEL IRIDITE	ELECT. DES.			
	CHECKED			
	DRAWN <i>[Signature]</i>			
	DATE 27 JUL 70			
	DATE 25 JUL 70			
	DATE			
	DATE			
	DATE 22 JUN 70			
NOTICE TO PERSONS RECEIVING THIS DRAWING THE TECHNICAL MATERIEL CORPORATION claims proprietary right in the material disclosed hereon. This drawing is issued in confidence for engineering information only and may not be reproduced or used to manufacture anything shown hereon without permission from THE TECHNICAL MATERIEL CORPORATION to the user. This drawing is loaned for mutual assistance and is subject to recall at any time.	SIZE A	CODE IDENT. NO. 82679	DWG NO. MS5645	ISSUE Ø
	SCALE	SHEET	OF	