

APPLICATION

QTY
MODEL USED ON
PALA-10K AP148

ASS'Y NO.
AP148

LTR
X
Ø

DESCRIPTION
EXP. RELEASE
ORIGINAL RELEASE

DATE
5/10/70
5/13/71

E.M.N.NO.

DRAFT
[Signature]

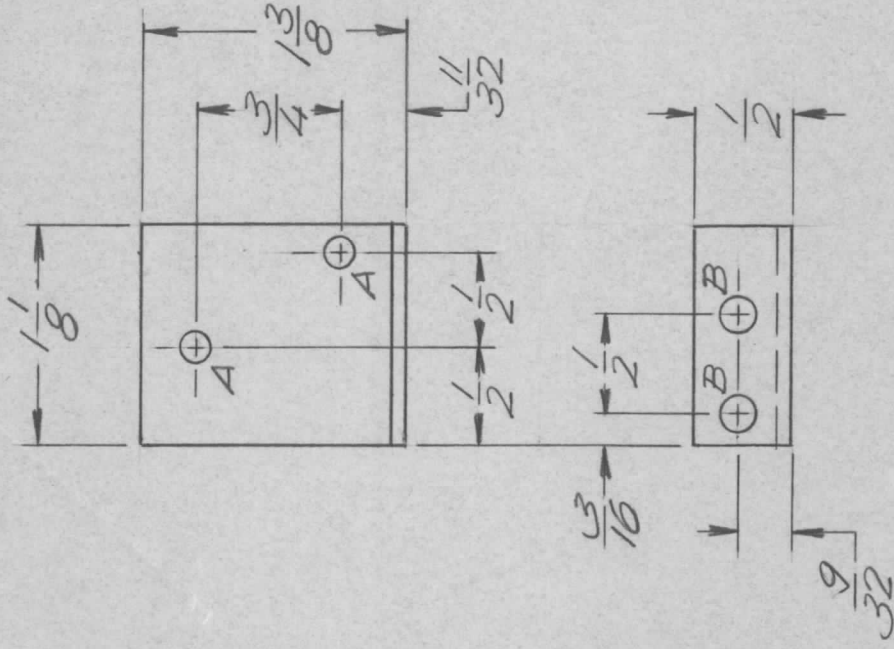
CHKD

APPD
[Signature]

REVISIONS

HOLE LEGEND:

A ~ 9/64 DIA. (2 REQ.)
B ~ 11/64 DIA. (2 REQ.)



NOTE:

REMOVE ALL BURRS AND SHARP EDGES.

UNLESS OTHERWISE SPECIFIED
DIMENSIONS ARE IN INCHES
AND INCLUDE CHEMICALLY APPLIED
OR PLATED FINISHES

DECIMALS
X ± .05
.XX ± .01
.XXX ± .005

FRACTIONS
1/64
TOLS.
ANGLES
0°-30°

MATERIAL: 063 ALLM
5052 - H32
FINISH S404
YELL. IRIDITE

REQ'D ITEM	PART NUMBER	DATE
FINAL APPROVAL	[Signature]	3 Feb 71
MECH. DES.	[Signature]	5/8/70
ELECT. DES.		
CHECKED		
DRAWN	[Signature]	5/10/70

DESCRIPTION

LIST OF MATERIAL

THE TECHNICAL MATERIEL CORP.
MAMARONECK, NEW YORK

MTG. BRKT, SW. AIR

NOTICE TO PERSONS RECEIVING THIS DRAWING
THE TECHNICAL MATERIEL CORPORATION claims proprietary right in the material disclosed hereon. This drawing is issued in confidence for engineering information only and may not be reproduced or used to manufacture anything shown hereon without permission from THE TECHNICAL MATERIEL CORPORATION to the user. This drawing is loaned for mutual assistance and is subject to recall at any time.

SIZE
A

CODE IDENT. NO.
82679

DWG NO.
MS 5640

ISSUE
Ø

SCALE
1:1

SHEET
OF