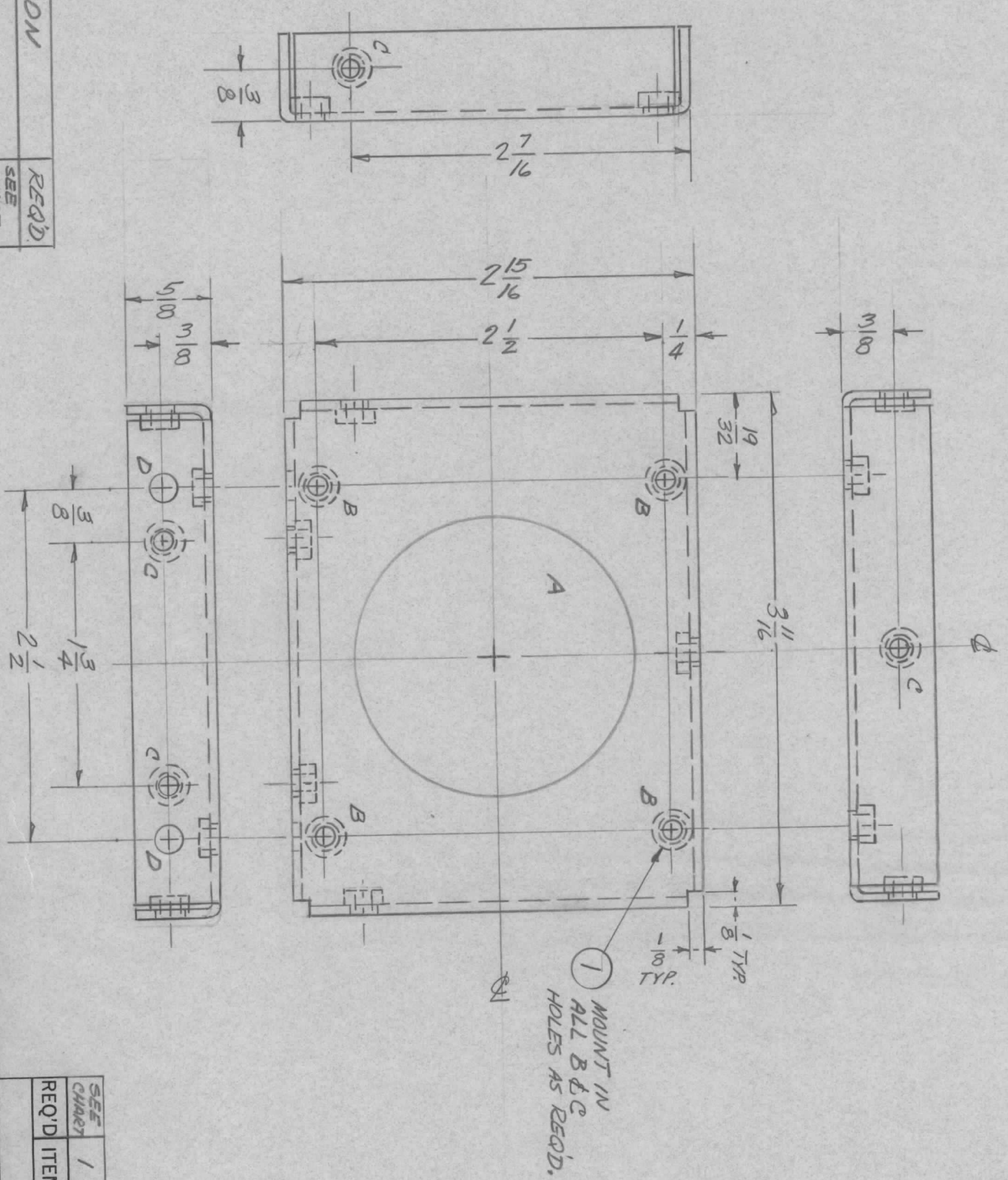


REVISIONS		DATE	E.M.N.NO	DRAFT	CHKD	APPD
ZONE	LTR	DESCRIPTION				
		ORIGINAL RELEASE	4/1/73	CS		

OPPOSITE
SIDE
IDENTICAL



HOLE	DESCRIPTION	REQ'D.
A	2" DIA.	SEE CHART
B & C	.191/.194 DIA.	SEE CHART
D	3/16 DIA	2

CHART

PART No.	"A" HOLE	"B" HOLE	"C" HOLE	ITEM 1
MS 5621-1	OMIT	OMIT	5 REQ'D	5 REQ'D
MS 5621-2	1	4 REQ'D.	5 REQ'D.	9 REQ'D

UNLESS OTHERWISE SPECIFIED:

1. USE MATERIAL THICKNESS FOR MAXIMUM RADIUS ON ALL BENDS.
2. ALL ANGULAR BENDS 90 DEGREES.
3. REMOVE ALL BURRS AND SHARP EDGES.
4. MOUNT INSERTS AFTER FINISHING.

QTY / EACH	1	MODEL USED ON	GPTR 10K	ASS'Y NO.	AF 109
APPLICATION					
CODE					

NOTICE TO PERSONS RECEIVING THIS DRAWING
THE TECHNICAL MATERIEL CORPORATION claims proprietary right in the material disclosed hereon. This drawing is issued in confidence for engineering information only and may not be reproduced or used to manufacture anything shown hereon without permission from THE TECHNICAL MATERIEL CORPORATION to the user. This drawing is loaned for mutual assistance and is subject to recall at any time.

DECIMALS	FRACTIONS
.X ± .05	1/64
.XX ± .01	ANGLES
.XXX ± .005	0° - 30'

MATERIAL 5052 H32
OBTAIN ALUMINUM
FINISH 5404
YELLOW IRIDITE

REQ'D	ITEM	PART NUMBER	DESCRIPTION	SYM.
1		NT/29-632-3	NUTS, SWAGE	B&C

THE TECHNICAL MATERIEL CORP.
MAMARONECK, NEW YORK

COVER, END

FINAL APPROVAL	DATE	SIZE	CODE IDENT. NO.	DWG NO.	ISSUE
MECH. DES.	DATE	B	82679	MS 5621	
ELECT. DES.	DATE	SCALE	1:1	SHEET	1 OF 1
CHECKED	DATE				
DRAWN	DATE				