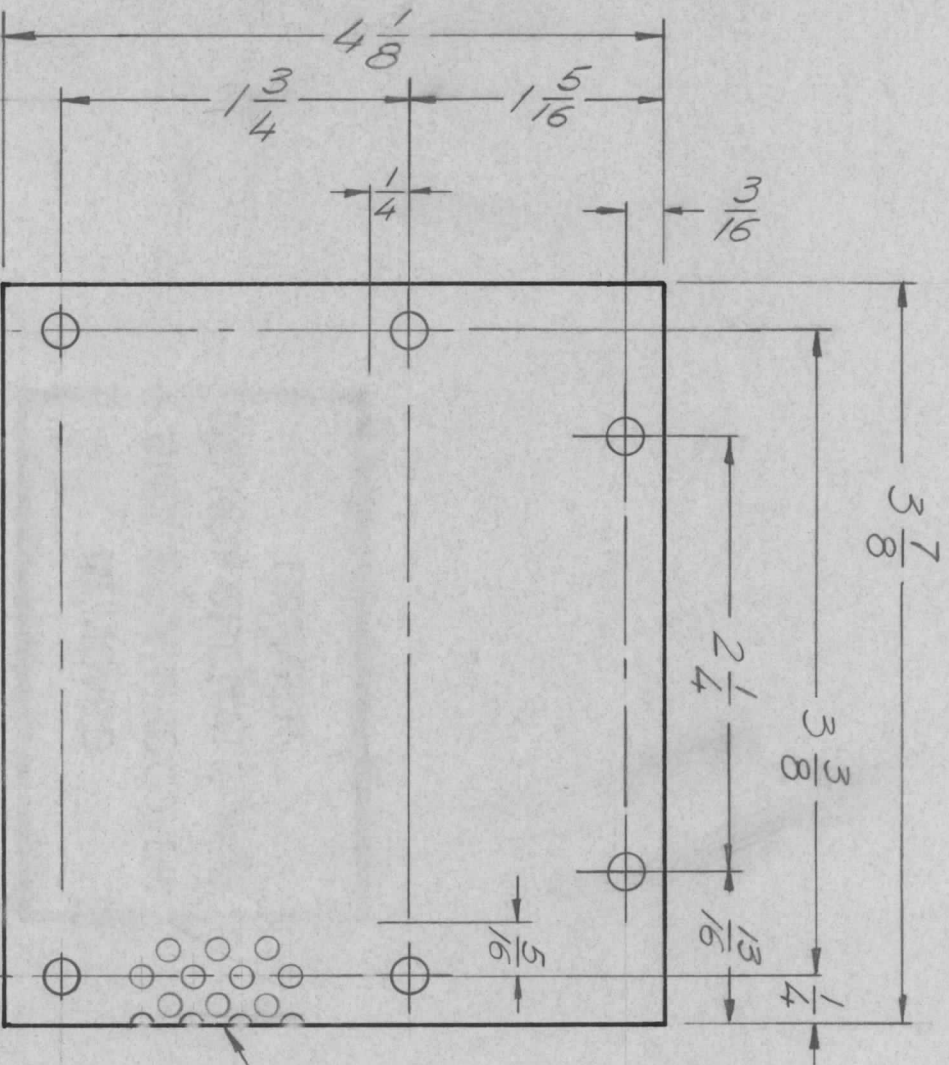


REVISIONS						
ZONE	LTR	DESCRIPTION	DATE	E.M.N. NO.	DRAFT	CHKD
	X	EXP RELEASE	02/69		GE	
	Ø	ORIGINAL RELEASE	1/20/90		WJ	
	A	ADD NOTE FOR MATL.	8/29/70	19358	GE	
	B	ADD OBSOLETE NOTE	6/14/70	20730	GE	sq

ALL HOLES $\frac{11}{64}$ DIA.
(6 REQ.)

OBSOLETE

NO LONGER USED



* NOTE: MATERIEL
1/16 THK ALUM. 1/8 DIA. HOLES
ON 1/4 CENTERS ENTIRE PIECE

REQ'D	ITEM	PART NUMBER	DESCRIPTION	SYM.
		F. BUDETTI	LIST OF MATERIAL	
FINAL APPROVAL		DATE	THE TECHNICAL MATERIEL CORP.	
MECH. DES. <i>R.P.</i>		DATE	MAMARONECK, NEW YORK	
ELECT. DES.		DATE	COVER - 4CX350	
CHECKED		DATE	CODE IDENT. NO. 82679	
DRAWN <i>EVANGELIST</i>		DATE	DWG. NO. <i>MS 5554</i>	
MATERIAL			SCALE <i>N75</i>	
FINISH <i>S404</i>			SHEET <i>1</i> OF <i>1</i>	
VELOCIRIDITE			ISSUE <i>B</i>	

QTY / UNIT	MODEL USED ON	ASS'Y NO.
1	PALADOK	AX 5080
APPLICATION		
CODE		

NOTICE TO PERSONS RECEIVING THIS DRAWING
THE TECHNICAL MATERIEL CORPORATION claims proprietary right in the material disclosed hereon. This drawing is issued in confidence for engineering information only and may not be reproduced or used to manufacture anything shown hereon without permission from THE TECHNICAL MATERIEL CORPORATION to the user. This drawing is loaned for mutual assistance and is subject to recall at any time.