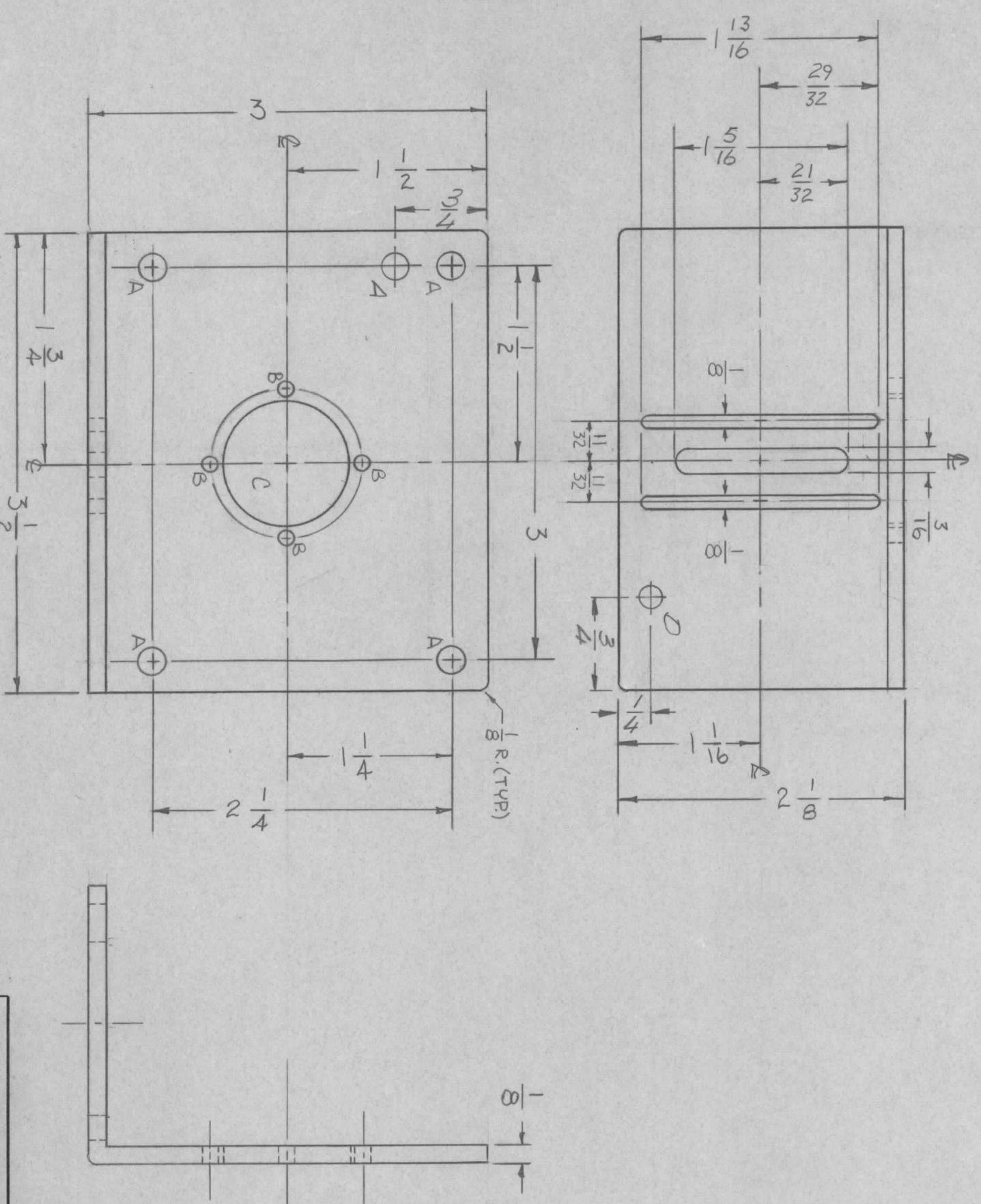


REVISIONS							
ZONE	LTR	DESCRIPTION	DATE	E.M.N. NO	DRAFT	CHKD	APPD
X		RELOC "B" HOLES & REVISED SLOTS	6/27/69		PG		
X		REDIM. B HOLES	10/29/69		GE		
Ø		ORIGINAL RELEASE	1/14/70		Ø		
A		ADD A & D HOLE	10/23/70		GE	Ø	P.S.B.



HOLE	DESCRIPTION	REQ
A	13/64 DIA.	5
B	1/8 DIA. ON 1 1/4 DIA. & AT 90° AS	4
C	15/16 DIA.	1
D	11/64 DIA.	1

REF: L D 2384

REQ'D ITEM	PART NUMBER	DESCRIPTION	SYM.
F. BUDETTI		LIST OF MATERIAL	
FINAL APPROVAL	DATE	THE TECHNICAL MATERIEL CORP.	
MECH. DES. <i>ALP</i>	DATE <i>1/12-70</i>	MAMARONECK, NEW YORK	
ELECT. DES. <i>RT</i>	DATE <i>1-8-70</i>	PLATE, MTG, SW/MOTOR	
CHECKED	DATE		
DRAWN <i>RS</i>	DATE		

QTY / UNIT	MODEL USED ON	ASSY NO.
2	PALA-10K	AX 5084
APPLICATION		
CODE		

**NOTICE TO PERSONS RECEIVING THIS DRAWING**  
 THE TECHNICAL MATERIEL CORPORATION claims proprietary right in the material disclosed hereon. This drawing is issued in confidence for engineering information only and may not be reproduced or used to manufacture anything shown hereon without permission from THE TECHNICAL MATERIEL CORPORATION to the user. This drawing is loaned for mutual assistance and is subject to recall at any time.