

APPLICATION

QTY 10  
 MODEL USED ON PALA-10K  
 ASS'Y NO. AX 5085

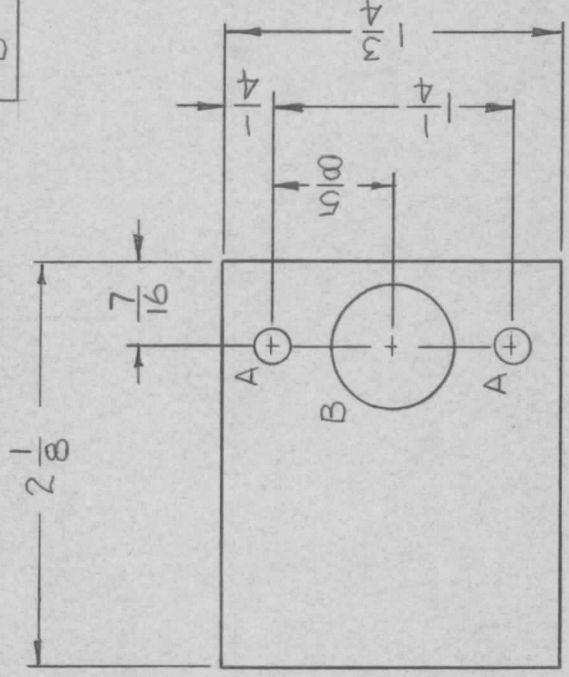
LTR Ø

DESCRIPTION ORIGINAL RELEASE

REVISIONS

DATE	E.M.N.NO	DRAFT	CHKD	APPD
1/14/70		CU		

HOLE	DESCRIPTION	REQ
A	11/64 DIA.	2
B	5/8 DIA.	1



UNLESS OTHERWISE SPECIFIED DIMENSIONS ARE IN INCHES AND INCLUDE CHEMICALLY APPLIED OR PLATED FINISHES

DECIMALS	FRACTIONS
X ± .05	1/64
.XX ± .01	TOLS.
.XXX ± .005	ANGLES
	0°-30'

MATERIAL .081 ALUM 5052 H32  
 FINISH S404  
 YELLOW IRIDITE

REQ'D ITEM F. BUDETTI  
 PART NUMBER  
 DATE APPROVALS DATE 1-7-70  
 MECH. DES. ALP. MLK  
 ELECT. DES.  
 CHECKED  
 DRAWN ALP  
 DATE 11-69

DESCRIPTION LIST OF MATERIAL  
 THE TECHNICAL MATERIEL CORP.  
 MAMARONECK, NEW YORK  
 SHIM, FRONT PANEL

NOTICE TO PERSONS RECEIVING THIS DRAWING  
 THE TECHNICAL MATERIEL CORPORATION claims proprietary right in the material disclosed hereon. This drawing is issued in confidence for engineering information only and may not be reproduced or used to manufacture anything shown hereon without permission from THE TECHNICAL MATERIEL CORPORATION to the user. This drawing is loaned for mutual assistance and is subject to recall at any time.

SIZE A  
 CODE IDENT. NO. 82679  
 DWG NO. MS 5545  
 SCALE 1:1  
 SHEET OF