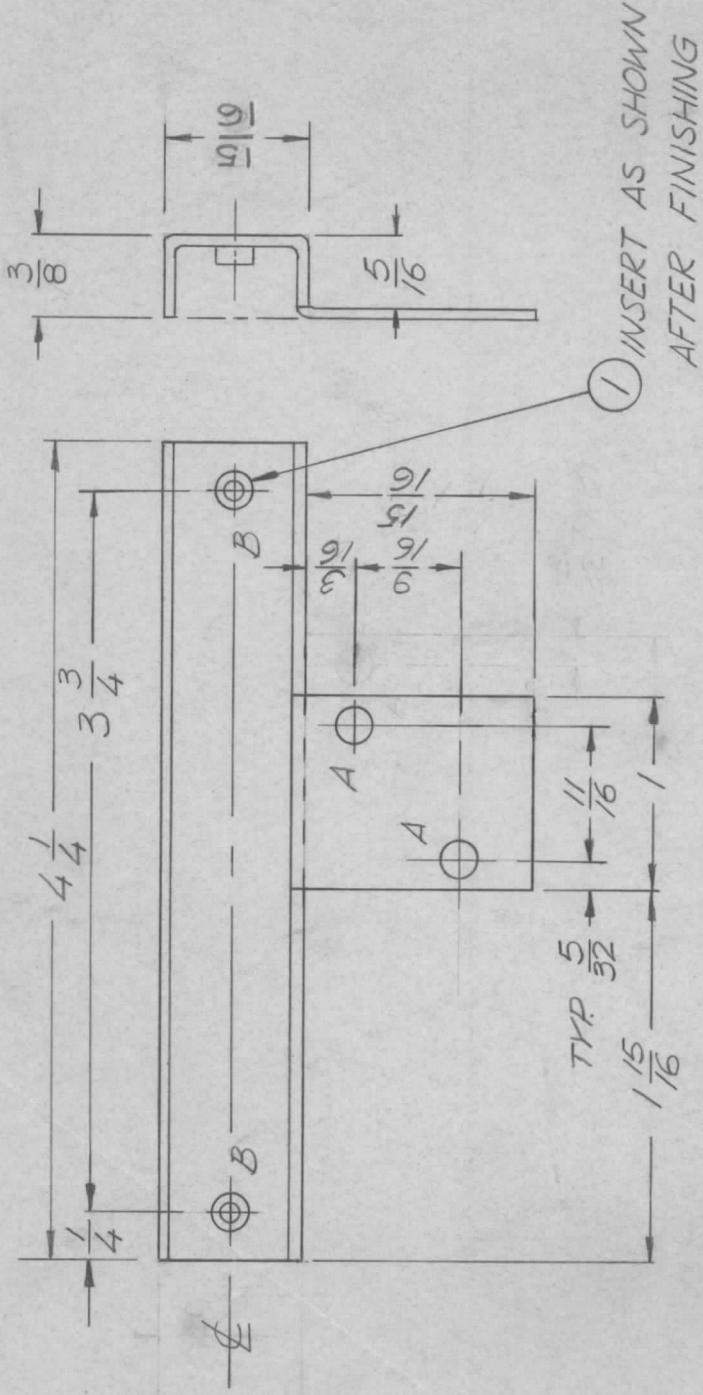


APPLICATION

QTY	MODEL USED ON	ASS'Y NO.	LTR
1	PALA 10K	AX5080	X
			Ø

REVISIONS

DESCRIPTION	DATE	E.M.N.NO	DRAFT	CHKD	APPD
EXP RELEASE	9/26/69		GE		
ORIGINAL RELEASE	1/18/70		(C)		



HOLE DESCRIPTION	QTY.
A 1/64 DIA.	2
B .191-.194	2

UNLESS OTHERWISE SPECIFIED DIMENSIONS ARE IN INCHES AND INCLUDE CHEMICALLY APPLIED OR PLATED FINISHES	2	1	NT129 0632-4	NUT PLN SPLINE	B
DECIMALS X ± .05 .XX ± .01 .XXX ± .005	REQ'D ITEM	PART NUMBER	DESCRIPTION		
FRACTIONS 1/64 ANGLES 0°-30°	F.BUDETTI	LIST OF MATERIAL			
MATERIAL .064 ALUM	FINAL APPROVAL	THE TECHNICAL MATERIEL CORP. MAMARONECK, NEW YORK			
FINISH YEL. IRIDITE	MECH. DES. ALP. JAL	BRACKET, TRANSFORMER			
	ELECT. DES.	MAMARONECK, NEW YORK			
	CHECKED	SIZE A			
	DRAWN EVANGELIST	CODE IDENT. NO. MS 5534			
		SCALE NTS			
		DWG NO. 82679			
		SHEET OF			
		ISSUE Ø			

NOTICE TO PERSONS RECEIVING THIS DRAWING
 THE TECHNICAL MATERIEL CORPORATION claims proprietary right in the material disclosed hereon. This drawing is issued in confidence for engineering information only and may not be reproduced or used to manufacture anything shown hereon without permission from THE TECHNICAL MATERIEL CORPORATION to the user. This drawing is loaned for mutual assistance and is subject to recall at any time.