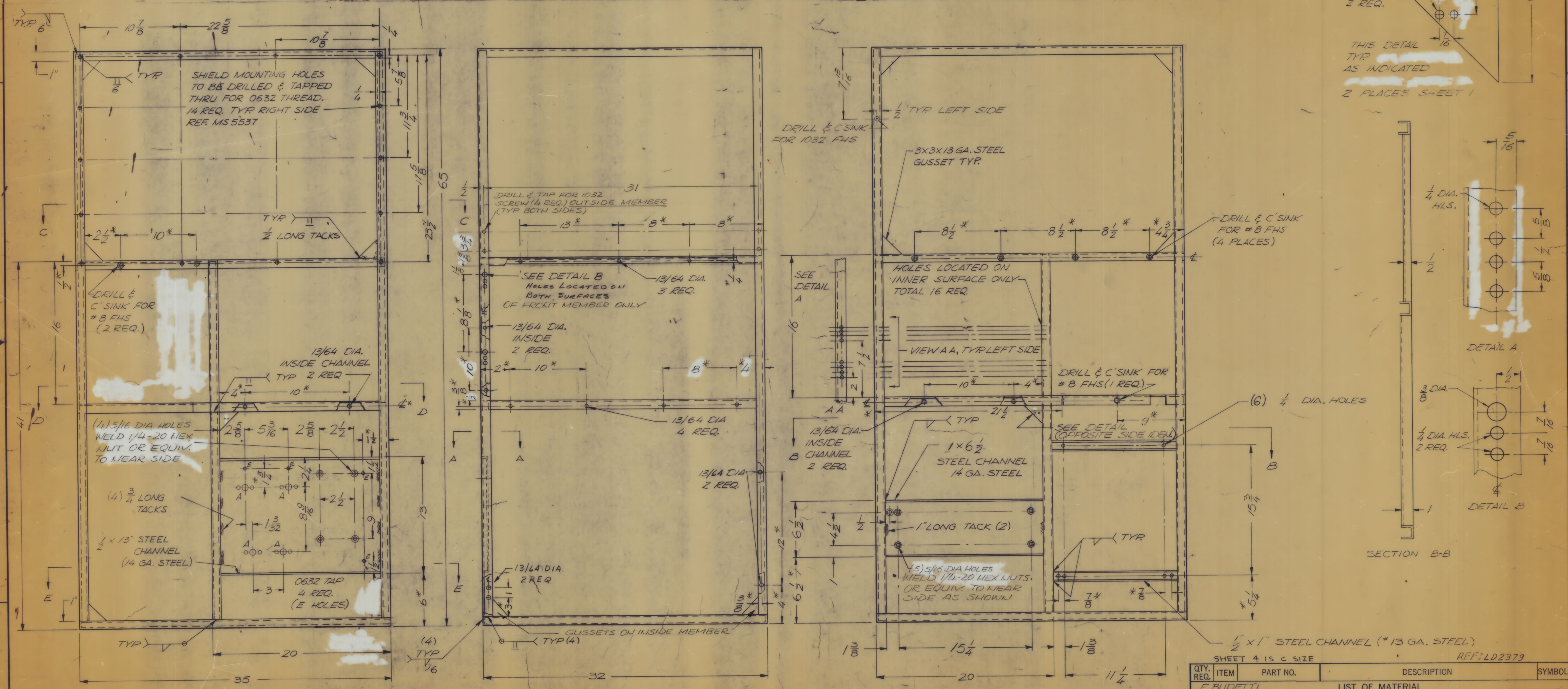


REVISIONS										REVISIONS					
ZONE	LTR	DESCRIPTION	DATE	E.M.N.O.	DRAFT	CHKD	APPD	E.M.N.O.	DRAFT	CHKD	ZONE	LTR	DESCRIPTION	DATE	APPROVED
D		ADDITIONS DONE ACCORDING TO ENCL.	11-13-72	20948	GE			19751	GE	1/14	A		ORIGINAL RELEASE FOR PRODUCTION	12/24/70	
E		See SHEET 3	11-10-80	21831	APB			19064	GE		B		ADDED HOLES FOR CABLE CLAMPS	2/7/70	APB
								20575	GE	AP	C		ADD 2 EA. 10-32 C'SNK HLS L&R SIDES	8/14/70	CD
													1/4-20 WELD NUTS WERE PEM NUTS	11-11-72	SP

NOTE: 1. ALL CHANNELS ARE 1 X 13 GA. STEEL UNLESS OTHERWISE NOTED.
 2. TOP & BOTTOM IS 13 GA. STEEL.
 3. GRIND ALL EXTERNAL WELDS FLUSH.

NOTE: DIMENSIONS WITH ASTERISKS (*) ARE NON CRITICAL. TOLERANCE $\pm 1/16$

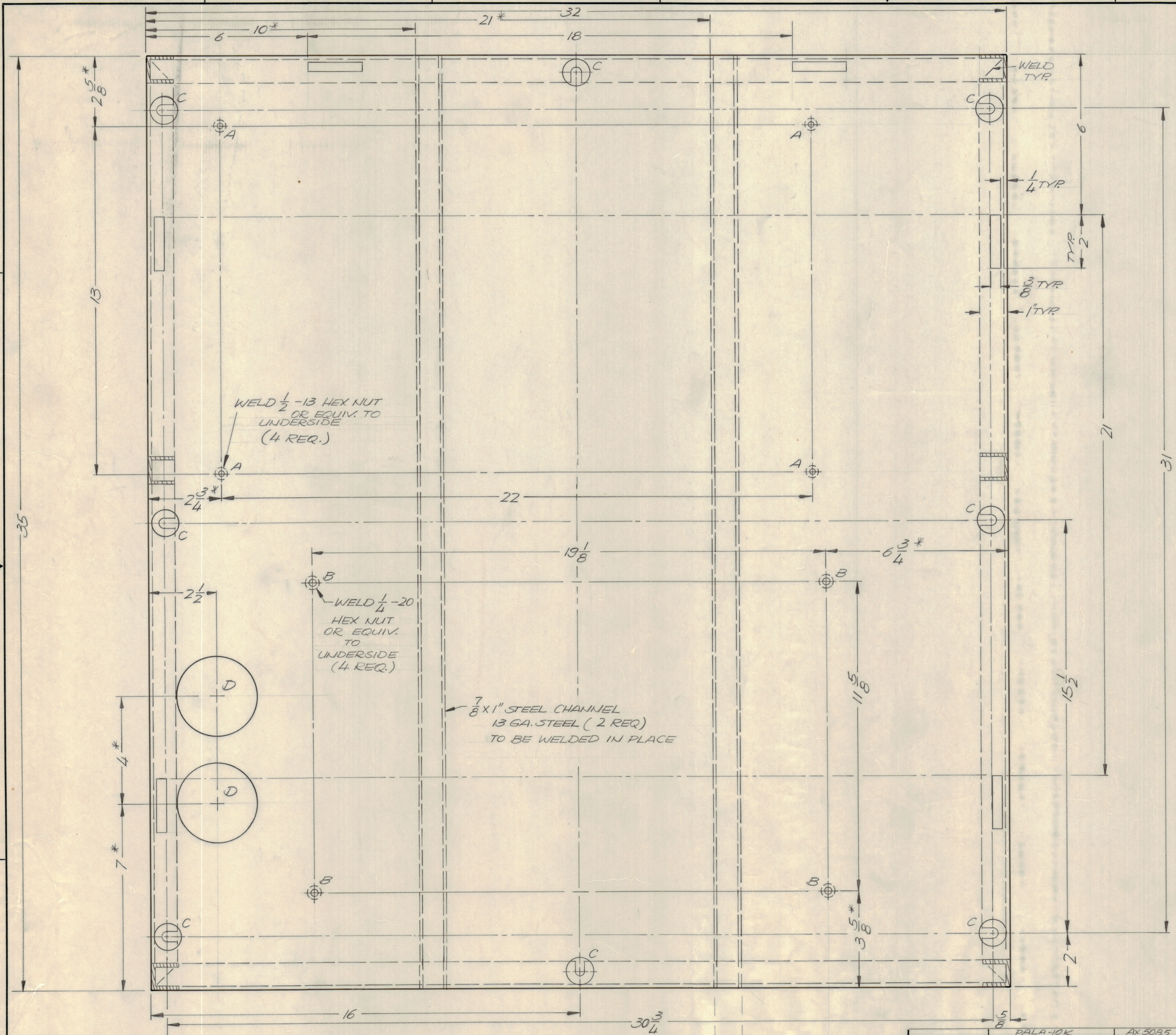


QTY. REQ.	ITEM	PART NO.	DESCRIPTION	SYMBOL
F. BUDETTI				
LIST OF MATERIAL				
FINAL APPROVAL: <i>[Signature]</i> DATE: 1/5/70				
MECH. DES. DATE: 12/2/69				
ELECT. DES. DATE:				
CHECKED: DATE:				
DRAWN: G. EVANGELIST DATE: 4.22.69				
UNLESS OTHERWISE SPECIFIED DIMENSIONS ARE IN INCHES AND INCLUDE CHEMICALLY APPLIED OR PLATED FINISHES				
TOLERANCES ON				
DECIMALS FRACTIONS				
.X ± .05 ± 1/64				
.XX ± .01 ANGLES ± 0° - 30'				
.XXX ± .005				
MATERIAL 13GA CRS EXCEPT AS NOTED				
FINISH COPPER FLASH & CLEAR IRIDITE				
THE TECHNICAL MATERIEL CORP. MAMARONECK, NEW YORK				
FRAME, 10K TECK.				
SIZE CODE IDENT NO. DWG NO. ISSUE				
D 82679 MS 5530 E				
SCALE SHEET 1 OF 7				

QTY / UNIT	MODEL USED ON	ASS'Y NO.
	HFL (-) 10K REVA	AX5163
	PALA-10K	AX3085
APPLICATION		
CODE		

NOTICE TO PERSONS RECEIVING THIS DRAWING
 THE TECHNICAL MATERIEL CORPORATION claims proprietary right in the material disclosed hereon. This drawing is issued in confidence for engineering information only and may not be reproduced or used to manufacture anything shown hereon without permission from THE TECHNICAL MATERIEL CORPORATION to the user. This drawing is loaned for mutual assistance and is subject to recall at any time.

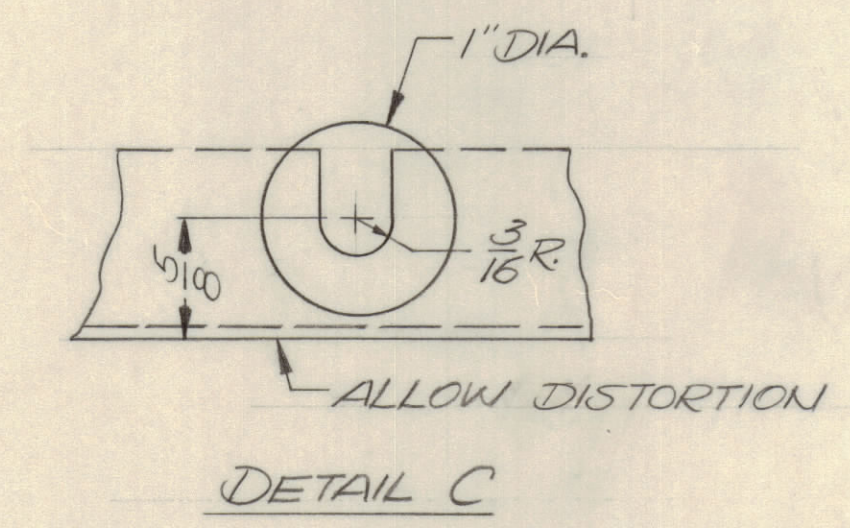
REVISIONS							
E.M.N. NO.	DRAFT	CHKD	ZONE	LTR	DESCRIPTION	DATE	APPROVED
20575	GE	AP		C	REDRAWN FOR CLARITY	4-13-72	ES
20949	EE			D	ASTERISKS ADD. TO NON CRITICAL DIMS.	11/13/72	ES
11831	QTB			E	SEE SHEET 3	11-10-80	



NOTE: DIMENSIONS WITH ASTERISKS (*) ARE NON CRITICAL TOLERANCE ± 1/16

HOLE DESCRIPTION QTY

A	9/16 DIA.	4
B	5/16 DIA.	4
C	SEE DETAIL C	8
D	3" DIA.	2



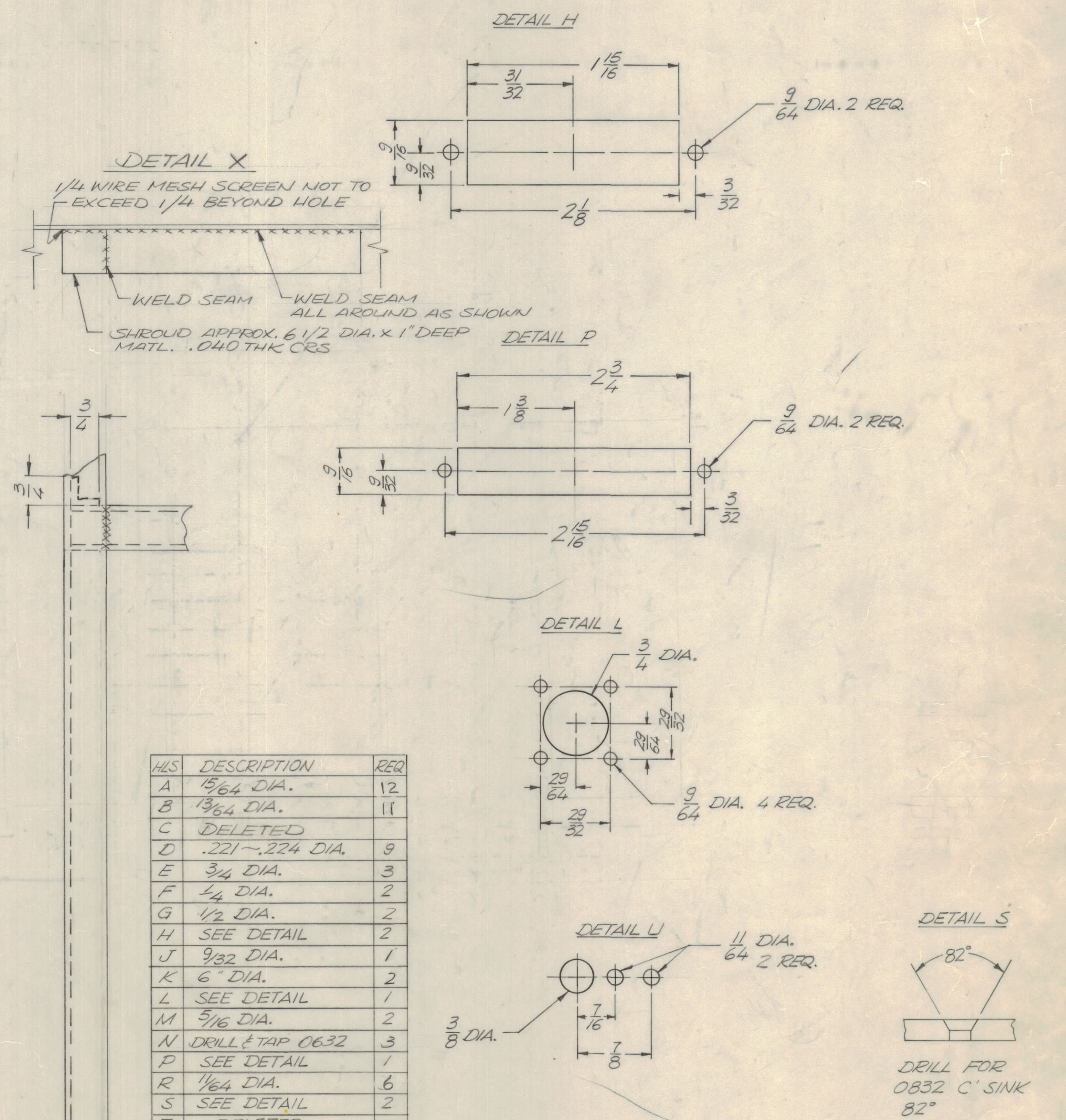
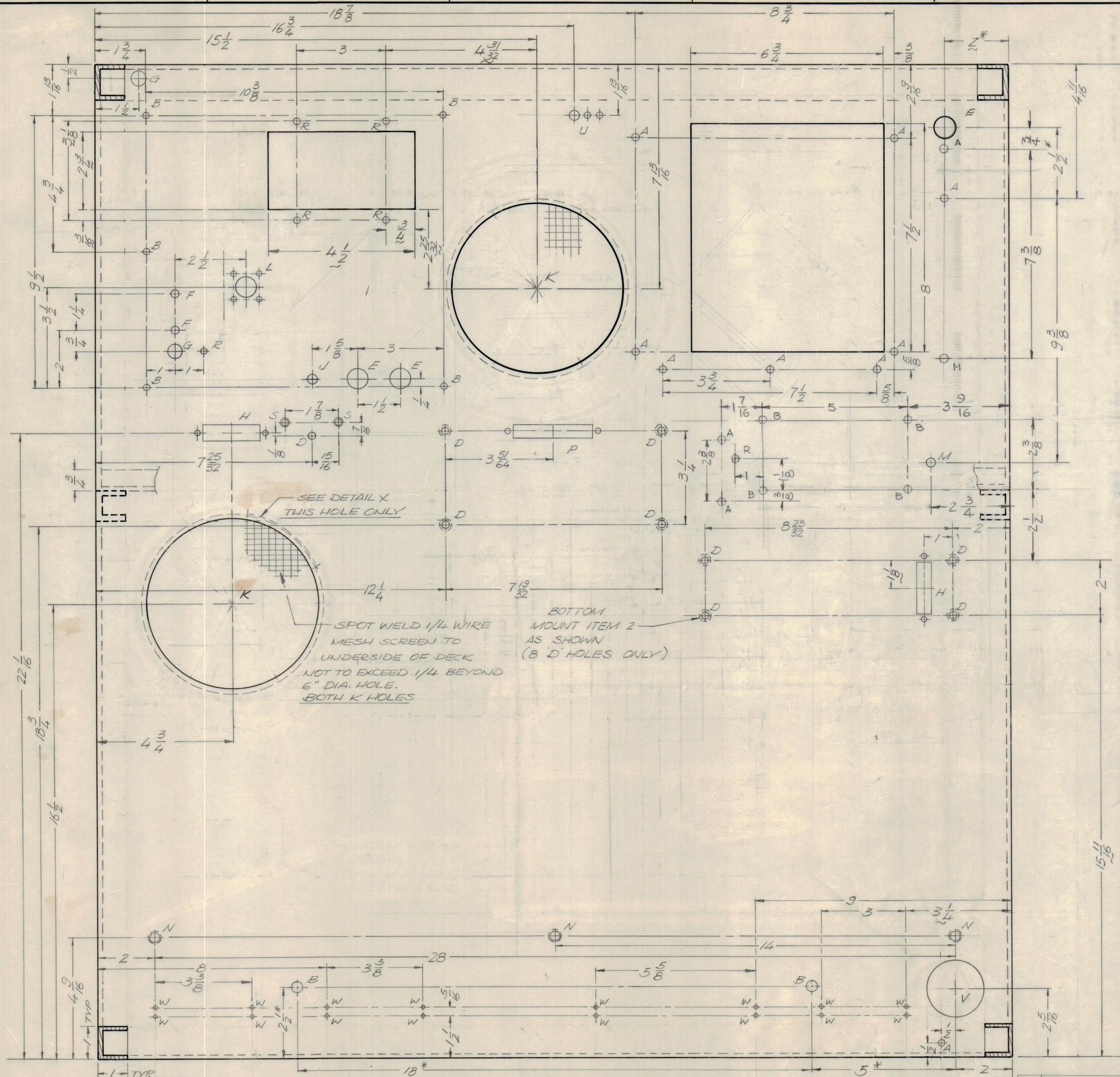
SECTION E-E FRONT

QTY. REQ.	ITEM	PART NO.	DESCRIPTION	SYMBOL
F.B. LIST OF MATERIAL				
UNLESS OTHERWISE SPECIFIED DIMENSIONS ARE IN INCHES AND INCLUDE CHEMICALLY APPLIED OR PLATED FINISHES		FINAL APPROVAL	DATE	THE TECHNICAL MATERIEL CORP. MAMARONECK, NEW YORK FRAME 10K P.S. DECK
TOLERANCES ON		MECH. DES.	DATE	
DECIMALS .X ± .05		ELECT. DES.	DATE	
FRACTIONS 1/64 ± .01		CHECKED	DATE	
ANGLES .XXX ± .005		DRAWN	DATE	
MATERIAL 13 GA CRS EXCEPT AS NOTED		GE	4.12.72	
FINISH COPPER FLASH & CLEAR IRIDITE				ISSUE
		SIZE	CODE IDENT NO.	DWG NO.
		D	82679	MS 5530
		SCALE 1/2	SHEET 2 OF 7	

QTY / UNIT	MODEL USED ON	ASS'Y NO.
	DALA-10K	AX 5095
APPLICATION		
CODE		
<small>NOTICE TO PERSONS RECEIVING THIS DRAWING</small> <small>THE TECHNICAL MATERIEL CORPORATION claims proprietary right in the material disclosed herein. This drawing is issued in confidence for engineering information only and may not be reproduced or used to manufacture anything shown herein without permission from THE TECHNICAL MATERIEL CORPORATION to the user. This drawing is loaned for mutual assistance and is subject to recall at any time.</small>		

QTY/UNIT	HFL()-10KREVA	AX 5163
	M/L/O	ASSY NO.

REVISIONS							
E.M.N.O	DRAFT	CHKD	ZONE	LTR	DESCRIPTION	DATE	APPROVED
	GE	WVC			ORIGINAL RELEASE FOR PRODUCTION	11-18-69	
19751	GE	WVC		A	ADDED 2 B HOLES / A HOLE 1/16 HOLE	2/5/70	WVC
19964	GE	WVC	AB	B	DIM. 4 5/16 CHG TO 4 9/16	9/14/70	WVC
20575	GE	WVC		C	ADDED 1 K HOLE FOR TOTAL OF 2	4-13-72	WVC
20949	GE	WVC		D	ADD ASTERISKS NOTE SEE EMAN	11/13/72	WVC
21931	G.D.L.			E	ADD THREE 1/16" HOLES - 4 "B" HOLES, ONE "M" HOLE & ONE "R" HOLE - DELETE ONE "M" HOLE	11-10-80	



HLS	DESCRIPTION	REQ
A	1/16 DIA.	12
B	1/32 DIA.	11
C	DELETED	
D	.221-.224 DIA.	9
E	3/4 DIA.	3
F	1/4 DIA.	2
G	1/2 DIA.	2
H	SEE DETAIL	2
J	9/32 DIA.	1
K	6" DIA.	2
L	SEE DETAIL	1
M	3/16 DIA.	2
N	DRILL & TAP 0632	3
P	SEE DETAIL	1
R	1/64 DIA.	6
S	SEE DETAIL	2
T	DELETED	
U	SEE DETAIL	1
V	2" DIA.	1
W	DRILL & TAP 0440	16

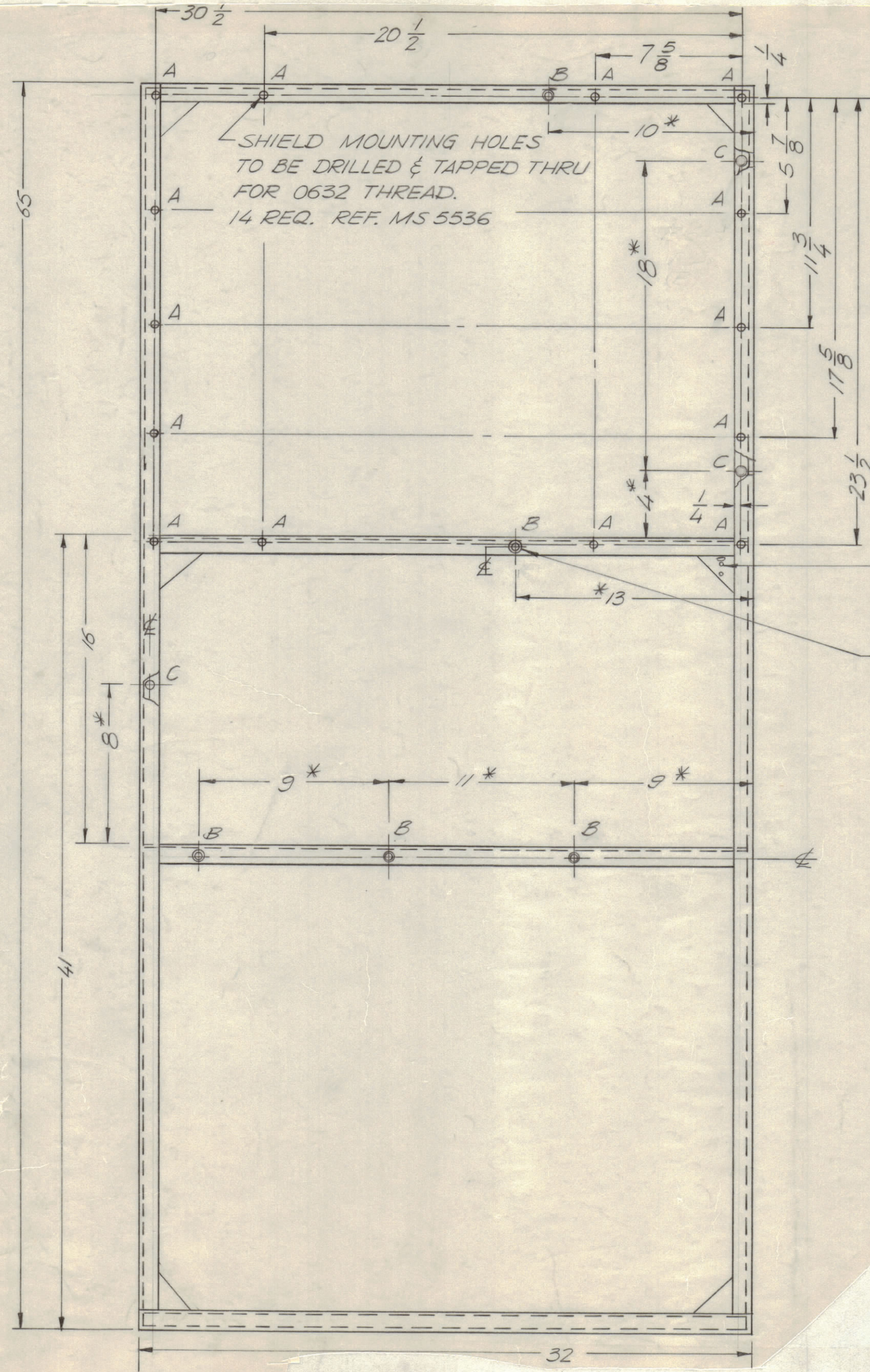
QTY. REQ.	ITEM	PART NO.	DESCRIPTION	SYMBOL
8	2	0832-6	WELD NUT	D
1			DELETED	

F. BUDETTI LIST OF MATERIAL			
FINAL APPROVAL	DATE	THE TECHNICAL MATERIEL CORP.	
MECH. DES.	DATE	MAMARONECK, NEW YORK	
ELECT. DES.	DATE	P.A. DECK	
CHECKED	DATE	FRAME 10K TECK.	
DRAWN	DATE	SIZE	CODE IDENT NO. DWG NO.
G. EVANGELIS	11-19-69	D	82679 MS5530
MATERIAL 1/8 GA CRS EXCEPT AS NOTED		SCALE	SHEET 3 OF 7
FINISH COPPER FLASH & CLEAR IRIDITE		1/2	

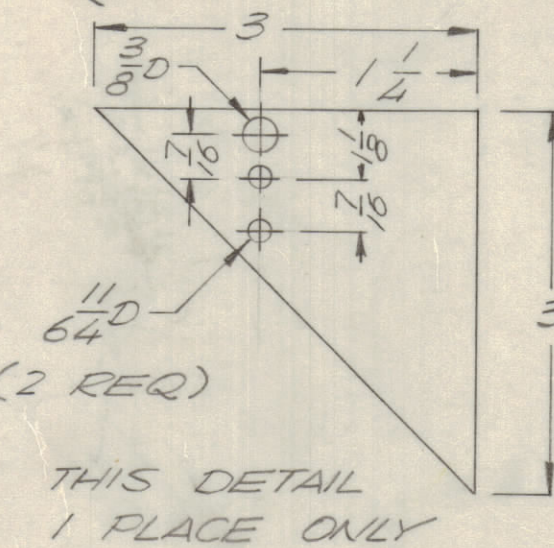
QTY / UNIT	MODEL USED ON	ASSY NO.
	LIFL(-)10K REV A	AX 5163
	PALA-10K	AX 5085
APPLICATION		
CODE		

NOTICE TO PERSONS RECEIVING THIS DRAWING
 THE TECHNICAL MATERIEL CORPORATION claims proprietary right in the material disclosed herein. This drawing is issued in confidence for engineering information only and may not be reproduced or used to manufacture anything shown hereon without permission from THE TECHNICAL MATERIEL CORPORATION to the user. This drawing is loaned for mutual assistance and is subject to recall at any time.

REVISIONS							
E.M.N.NO	DRAFT	CHKD	ZONE	LTR	DESCRIPTION	DATE	APPROVED
	HY	gpc			ORIGINAL RELEASE FOR PRODUCTION	12/2/69	
19751	GE	MM		A	ADDED HOLES FOR CABLE CLAMPS	2/7/70	MM
19964	GE	MM		B	ADD GUSSET DETAIL	8/14/70	MM
20575	GE	MM		C	SEE OTHER SHEETS-NO CHANGES	4-12-72	MM
20948	GE	MM		D	ASTERISKS NOTE ADDED SEE EMJ	11-13-72	MM
21831	QA			E	SEE SHEET 3	11-10-80	



HOLE	DESCRIPTION	REQ.
A	TAP THRU 0632	14
B	DRILL & C SINK # 8 FHS	5
C	13/64 DIA.	3



- NOTE
1. ALL CHANNELS ARE 1 X 1 X 13 GA. STEEL UNLESS OTHERWISE NOTED.
 2. GRIND ALL EXTERNAL WELDS FLUSH.
 3. DIMENSIONS WITH ASTERISKS ARE NON CRITICAL TOLERANCE $\pm 1/16$

SHEETS 1,2,3,5,6 ARE D SIZE

REAR VIEW

HFL(-)10K REV A	AX 5163
PALA 10K	AX 5085
QTY / UNIT	MODEL USED ON ASS'Y NO.
APPLICATION	
CODE	

NOTICE TO PERSONS RECEIVING THIS DRAWING
 THE TECHNICAL MATERIEL CORPORATION claims proprietary right in the material disclosed hereon. This drawing is issued in confidence for engineering information only and may not be reproduced or used to manufacture anything shown hereon without permission from THE TECHNICAL MATERIEL CORPORATION to the user. This drawing is loaned for mutual assistance and is subject to recall at any time.

UNLESS OTHERWISE SPECIFIED DIMENSIONS ARE IN INCHES AND INCLUDE CHEMICALLY APPLIED OR PLATED FINISHES

TOLERANCES ON

DECIMALS	FRACTIONS
.X $\pm .05$	$\pm 1/64$
.XX $\pm .01$	ANGLES $\pm 0^\circ -30'$
.XXX $\pm .005$	

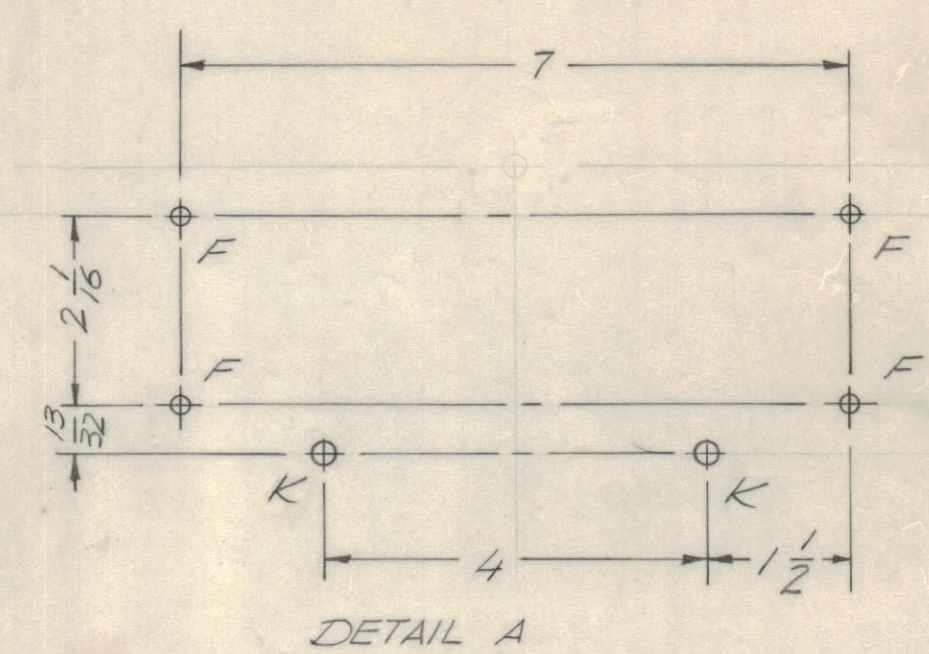
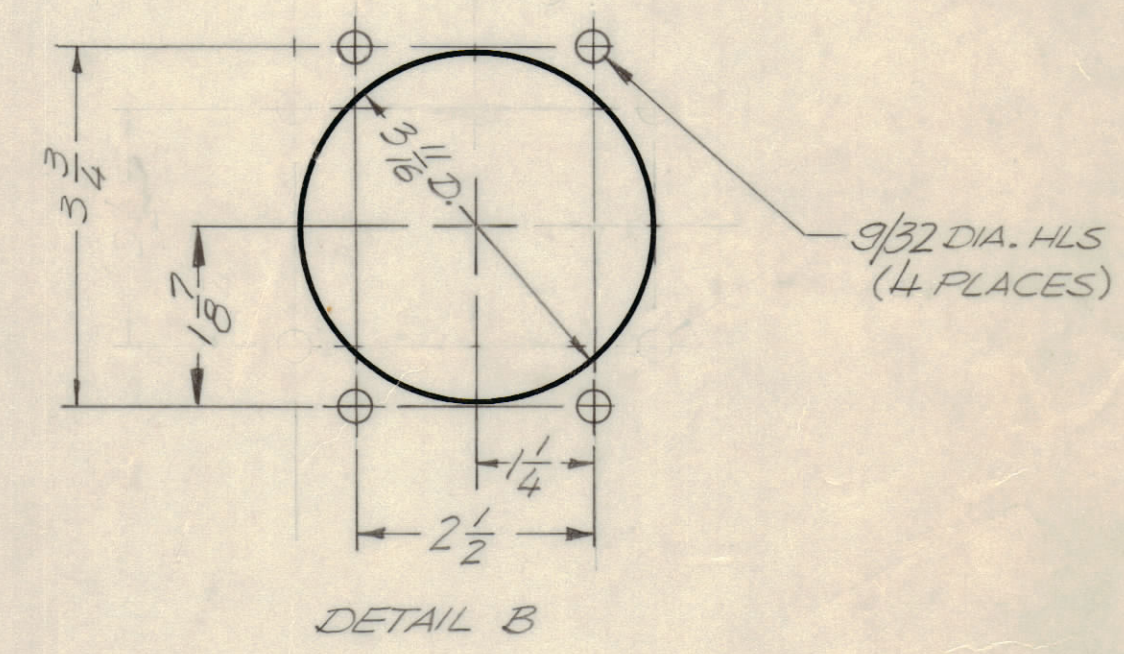
MATERIAL 13 GA CRS EXCEPT AS NOTED

FINISH COPPER FLASH & CLEAR IRIDITE

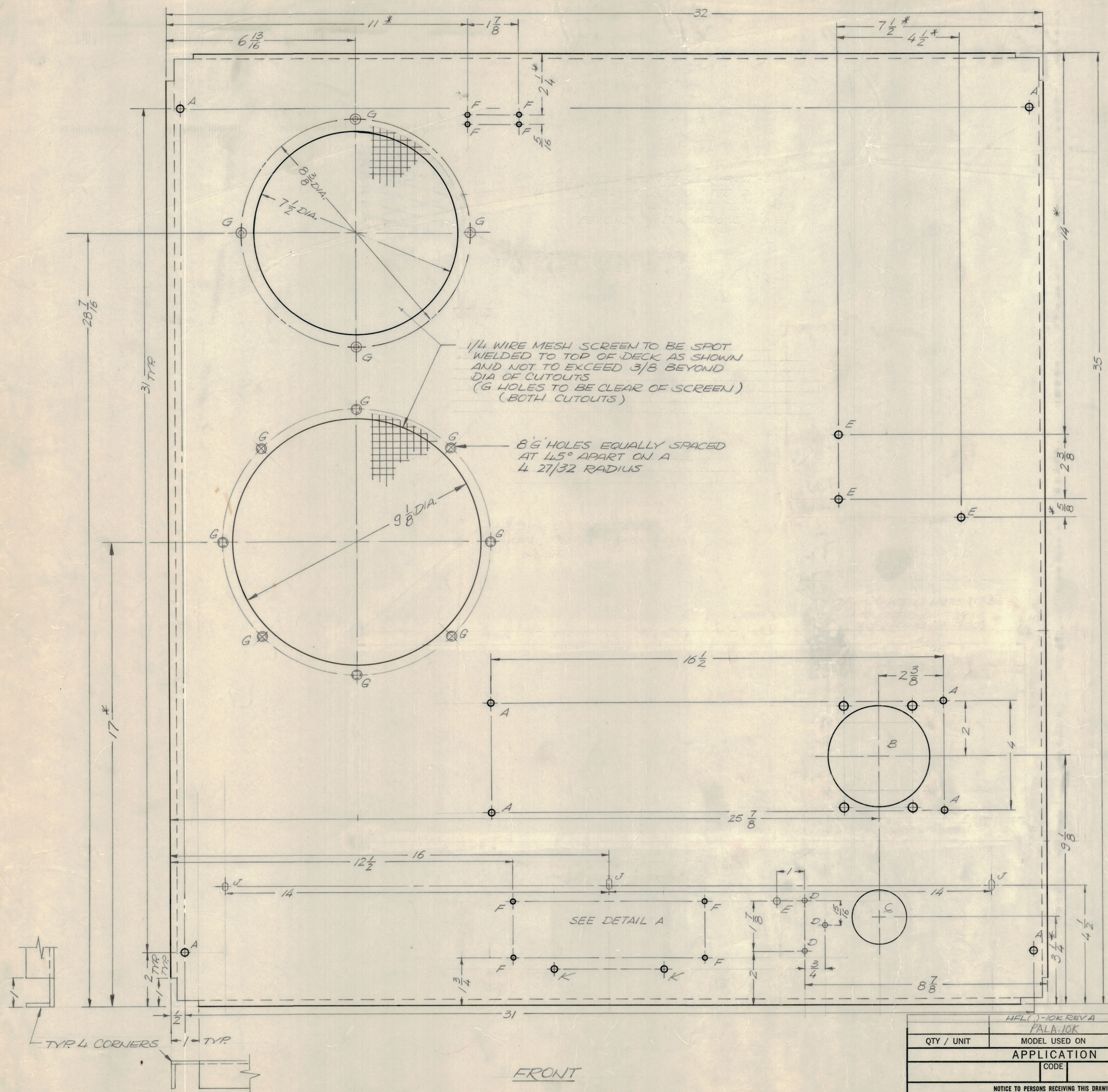
QTY. REQ.	ITEM	PART NO.	DESCRIPTION	SYMBOL
F. BUDETTI LIST OF MATERIAL				
FINAL APPROVAL		DATE	THE TECHNICAL MATERIEL CORP.	
MECH. DES.		DATE	MAMARONECK, NEW YORK	
ELECT. DES.		DATE	FRAME 10K	
CHECKED		DATE	REAR	
DRAWN		DATE		
SIZE	CODE	IDENT NO.	DWG NO.	ISSUE
C	82679	MS 5530		E
SCALE NTS				SHEET 4 OF 7

REVISIONS							
E.M.N.NO	DRAFT	CHKD	ZONE	LTR	DESCRIPTION	DATE	APPROVED
	GE	W		P	ORIGINAL RELEASE FOR PRODUCTION	12-9-69	
19751	GE	W		A	ADDED ONE E HOLE	1-4-70	W
19964	GE	W		B	CHG. DIM. FROM 4 3/8 TO 4 1/2 ADD 1/8 HLS	8/14/70	W
20575	GE	W		C	ADDED 9/16 DIA. HOLE BELOW 7 1/2 HLE	4-13-72	W
20949	GE	W		D	ADDED ASTERISKS NOTE (SEE E.M.N.)	11-13-72	W
24831	W			E	SEE SHEET 3	11-10-80	W

HOLE	DESCRIPTION	REQ
A	DRILL & TAP FOR 1032 THD.	8
B	SEE DETAIL B	1
C	1" DIA.	1
D	3/16 DIA.	3
E	19/64 DIA.	4
F	DRILL & TAP FOR 6-32 THD.	8
G	DRILL & TAP FOR 8-32 THD.	12
H	DELETED	
J	11/64 X 11/32 SLOT	3
K	9/64 DIA.	2



NOTE: DIMENSIONS WITH ASTERISKS (*) ARE NON CRITICAL. TOLERANCE ± 1/16



QTY. REQ.	ITEM	PART NO.	DESCRIPTION	SYMBOL
F. BUDETTI LIST OF MATERIAL				
THE TECHNICAL MATERIEL CORP. MAMARONECK, NEW YORK				
FRAME 10K TOP				
SIZE		CODE IDENT NO.	DWG NO.	ISSUE
D		82679	MS 5530	E
SCALE 1/2		SHEET 5 OF 7		

HFLC-10K REVA		AX 5163
PALA-10K		AL5085
QTY / UNIT	MODEL USED ON	ASS'Y NO.
	APPLICATION	
CODE		
<small>NOTICE TO PERSONS RECEIVING THIS DRAWING</small> <small>THE TECHNICAL MATERIEL CORPORATION claims proprietary right in the material disclosed hereon. This drawing is issued in confidence for engineering information only and may not be reproduced or used to manufacture anything shown herein without permission from THE TECHNICAL MATERIEL CORPORATION to the user. This drawing is loaned for mutual assistance and is subject to recall at any time.</small>		

UNLESS OTHERWISE SPECIFIED DIMENSIONS ARE IN INCHES AND INCLUDE CHEMICALLY APPLIED OR PLATED FINISHES

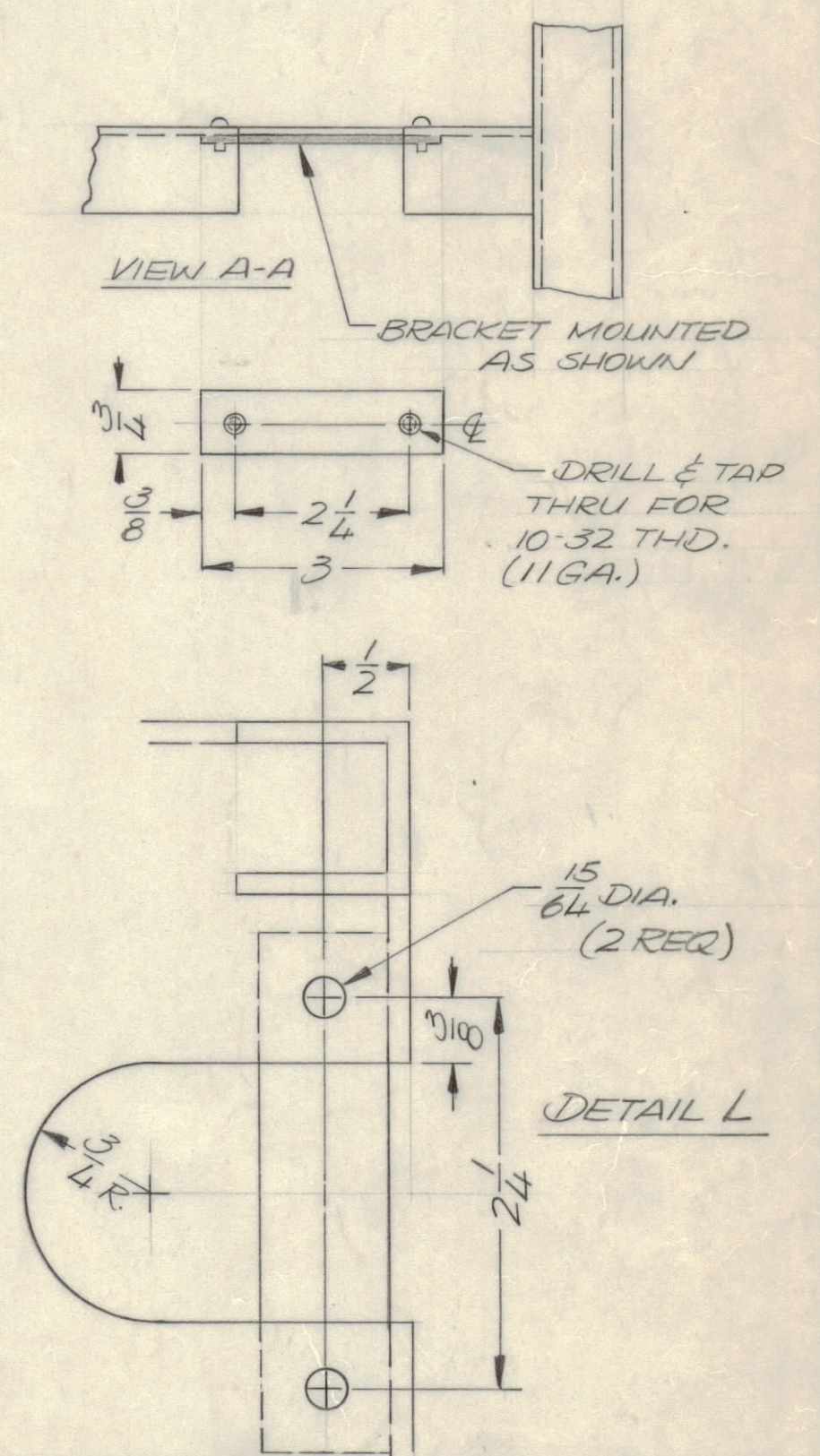
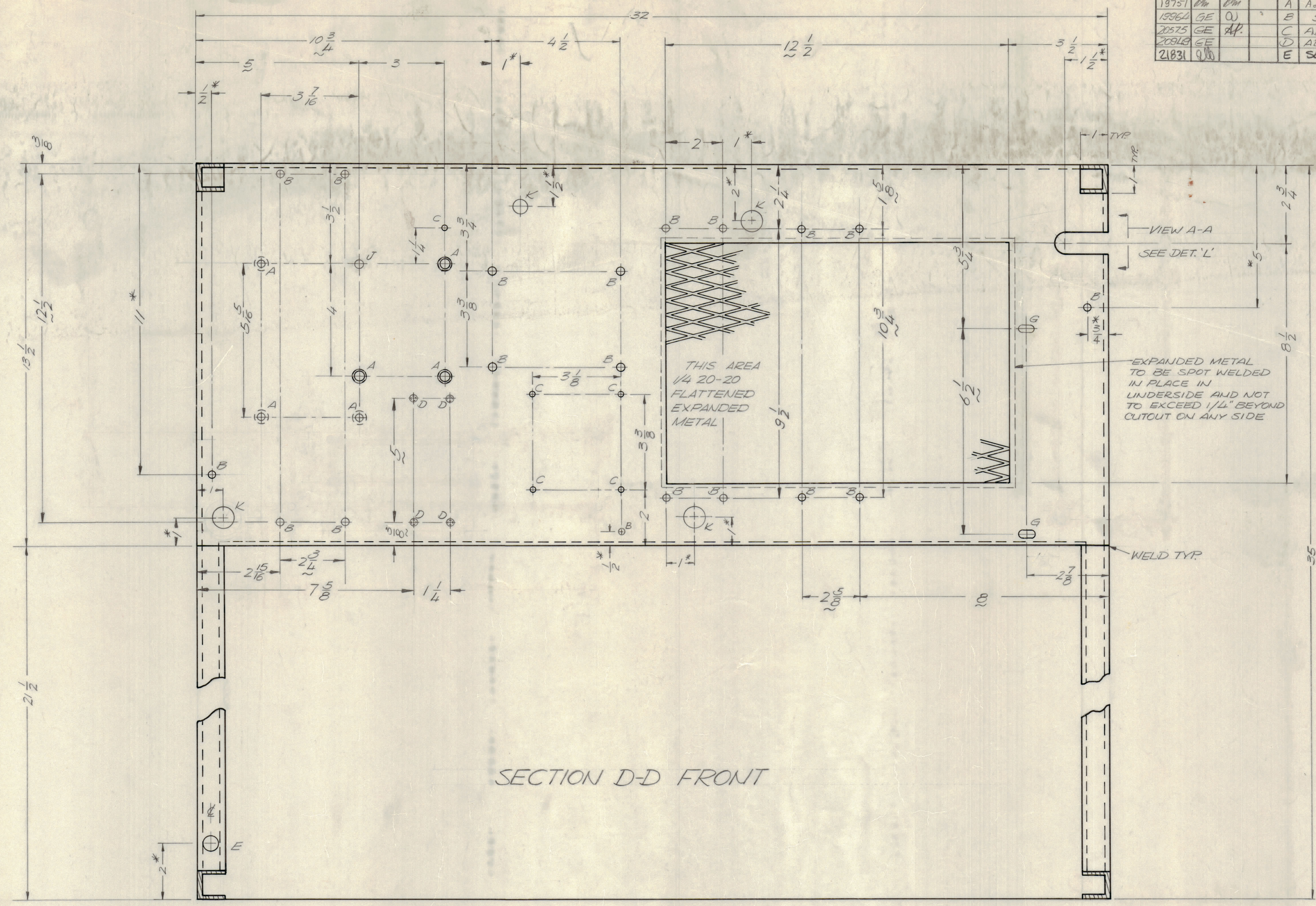
TOLERANCES ON

DECIMALS	FRACTIONS
.X ± .05	± 1/64
.XX ± .01	ANGLES
.XXX ± .005	± 0° - 30'

MATERIAL 13 GA CRS EXCEPT AS NOTED

FINISH COPPER FLASH & CLEAR IRIDITE

REVISIONS							
E.M.N.O.	DRAFT	CHKD	ZONE	LTR	DESCRIPTION	DATE	APPROVED
19751	EM	EM		A	Add Sh. 6	9 Feb 70	EM
19964	GE	OU		B	SEE SHEETS 1, 3, 4, 5	8-14-70	OU
20575	GE	AP		C	ADD DETAILS FROM SHEET 2	4-13-72	AP
20848	GE			D	ADD. ASTERISKS NOTE, SEE EMN	11-13-72	AP
21831	QU			E	SEE SHEET 3	11-10-87	



SECTION D-D FRONT

HOLE	DESCRIPTION	QTY
A	1/4 20 WELD NUT	7
B	15/64 DIA.	15
C	11/64 DIA.	5
D	TAP THRU FOR 0632	4
E	1/2 DIA.	1
F	DELETED	
G	1/4 X 1/2 SLOT	2
H	DELETED	
J	9/32 DIA.	1
K	3/16 DIA.	4
L	SEE "L" DETAIL	1

NOTE 1. 1/4 20-20 FLATTENED EXPANDED METAL TO BE MOUNTED ON BOTTOM SURFACE AND TO EXTEND 1/4 INCH BEYOND EDGE.

2. WELD NUTS (HOLE A) TO BE MOUNTED AS SHOWN

3. DIMENSIONS WITH ASTERISKS ARE NON CRITICAL. TOLERANCE ± 1/16

HFL (-) 10K REVA		AX 5163
PALA 10 K		AX 5085
QTY / UNIT	MODEL USED ON	ASSY NO.
	APPLICATION	
	CODE	

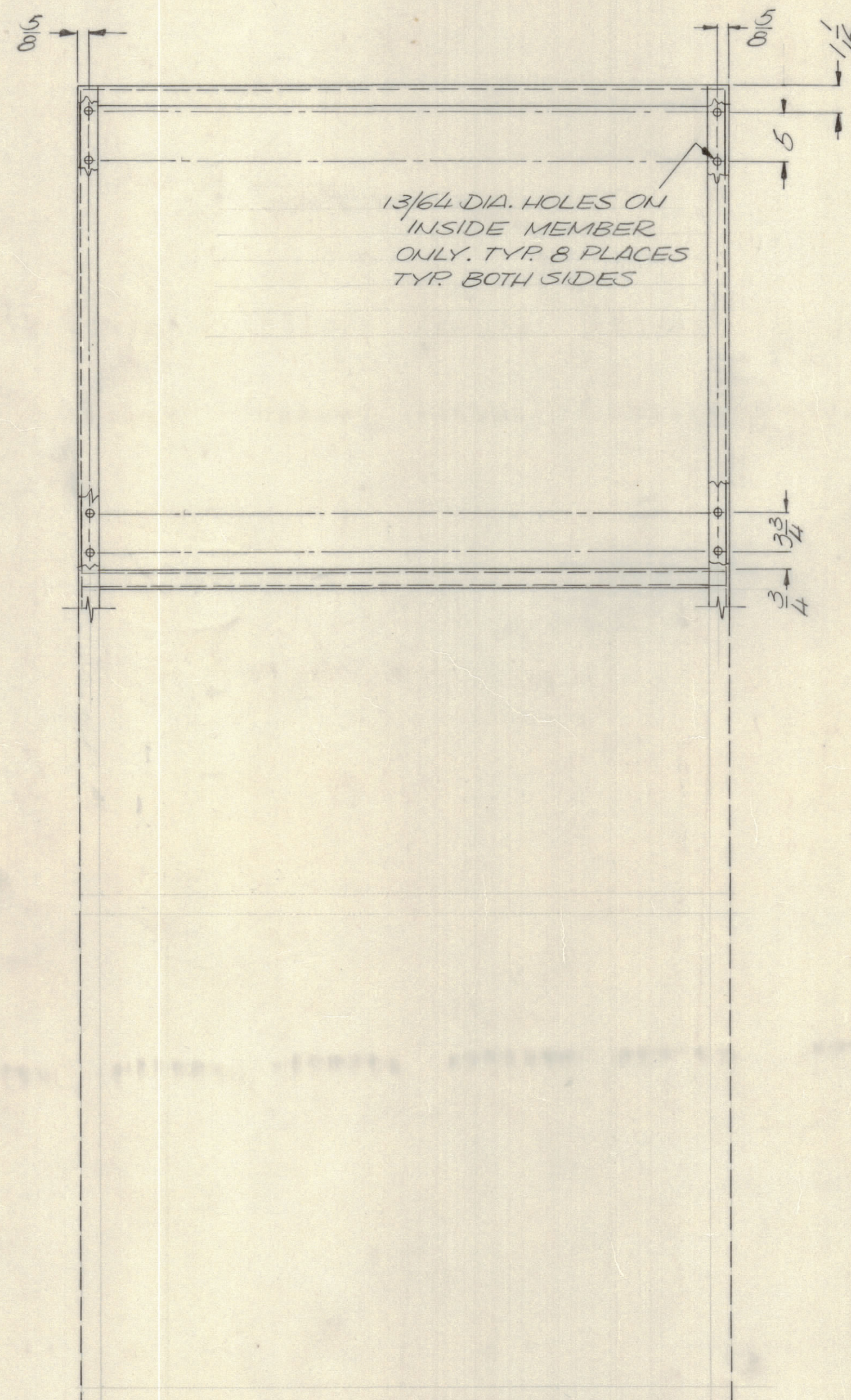
UNLESS OTHERWISE SPECIFIED DIMENSIONS ARE IN INCHES AND INCLUDE CHEMICALLY APPLIED OR PLATED FINISHES

TOLERANCES ON
 DECIMALS X ± .05
 FRACTIONS 1/64 ANGLES ± 0°-30°
 XXX ± .005

MATERIAL 13 GA CRS EXCEPT AS NOTED
 FINISH COPPER FLASH & CLEAR IRIDITE

QTY. REQ.	ITEM	PART NO.	DESCRIPTION	SYMBOL
E BUDETTI LIST OF MATERIAL				
FINAL APPROVAL: <i>EM</i> DATE: 3/9/70				
MECH. DES. DATE: 3/4/70				
ELECT. DES. DATE:				
CHECKED DATE:				
DRAWN: EVANGELIST DATE: 2/6/70				
THE TECHNICAL MATERIEL CORP. MAMARONECK, NEW YORK			FRAME 10K, BLOWER DECK	
SIZE	CODE	IDENT NO.	DWG NO.	ISSUE
D	82679	MS 5530		E
SCALE 1/2				SHEET 6 OF 7

REVISIONS							
E.M.N.NO	DRAFT	CHKD	ZONE	LTR	DESCRIPTION	DATE	APPROVED
20819	GE			D	ADDED SLIT 7	11/13/72	CSB
21831	GE			E	SEE SHEET 3	11-10-80	



FRONT VIEW

HFL (-) 10K REVA	AX 5163	
PALA 10K	AX 5085	
QTY / UNIT	MODEL USED ON	ASS'Y NO.
APPLICATION		
CODE		
<small>NOTICE TO PERSONS RECEIVING THIS DRAWING</small> <small>THE TECHNICAL MATERIEL CORPORATION claims proprietary right in the material disclosed hereon. This drawing is issued in confidence for engineering information only and may not be reproduced or used to manufacture anything shown hereon without permission from THE TECHNICAL MATERIEL CORPORATION to the user. This drawing is loaned for mutual assistance and is subject to recall at any time.</small>		

UNLESS OTHERWISE SPECIFIED DIMENSIONS ARE IN INCHES AND INCLUDE CHEMICALLY APPLIED OR PLATED FINISHES	
DECIMALS	FRACTIONS
.X ± .05	± 1/64
.XX ± .01	ANGLES
.XXX ± .005	± 0° - 30'
MATERIAL	
FINISH	

QTY. REQ.	ITEM	PART NO.	DESCRIPTION	SYMBOL	
E. BUDETTI LIST OF MATERIAL					
FINAL APPROVAL	E.B.	DATE	1/8/70	THE TECHNICAL MATERIEL CORP. MAMARONECK, NEW YORK FRAME 10K TECK.	
MECH. DES.	ALP	DATE	12/31/69		
ELECT. DES.		DATE			
CHECKED		DATE			
DRAWN	GE	DATE	11-13-72		
SIZE			CODE IDENT NO.	DWG NO.	ISSUE
D			82679	MS 5530	E
SCALE				SHEET 7 OF 7	

E MS 5530