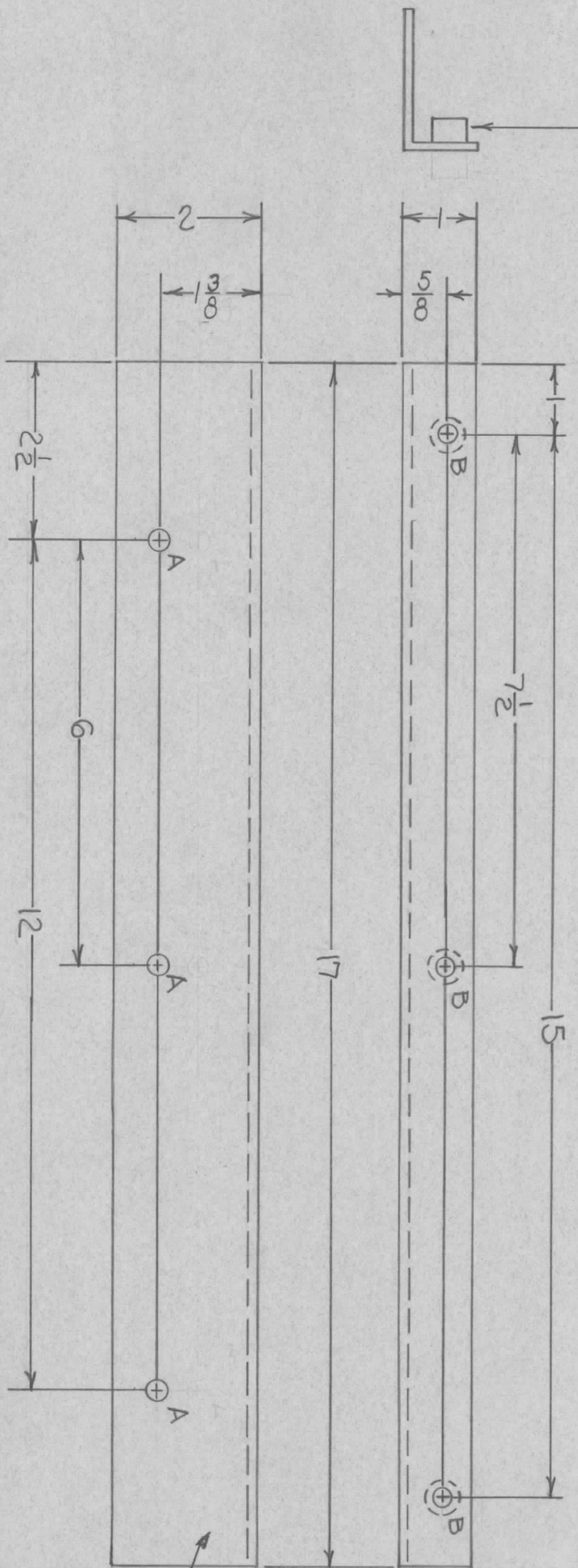


REVISIONS							
ZONE	LTR	DESCRIPTION	DATE	E.M.N.NO	DRAFT	CHKD	APPD
	X	EXP. RELEASE	9-28-68		A.P.		
	Ø	ORIG. RELEASE FOR PROD.	9-26-68	Ø	R.G.		<i>[Signature]</i>

① MOUNT ITEM 1 IN ALL B HOLES AS SHOWN, AFTER FINISHING



HOLE	DESCRIPTION	REQ.
A	9/32 DIA.	3
B	.344-.347 DIA.	3

MARK TMC PART NUMBER 1/8 HIGH GOTHIC WITH LATEST REVISION LETTER

REQ'D ITEM	PART NUMBER	DESCRIPTION	SYM.
3	1	NT, ROUND, SPLINE TYPE	B

THE TECHNICAL MATERIEL CORP.
MAMARONECK, NEW YORK

SUPPORT, BOTTOM, CONTACTOR

FINAL APPROVAL	MECH. DES.	ELECT. DES.	CHECKED	DRAWN	DATE	DATE	DATE	DATE	DATE	DATE	DATE	DATE
<i>[Signature]</i>	<i>[Signature]</i>	<i>[Signature]</i>	<i>[Signature]</i>	<i>[Signature]</i>	9-6-68	9/26/68	9/24/68	9/68				

QTY / UNIT	MODEL USED ON	ASS'Y NO.
1	BCTIOKA	AXG81

DECIMALS	FRACTIONS	TOLS.	ANGLES
X ± .05	1/64		0° - 30'
.XX ± .01			
.XXX ± .005			

UNLESS OTHERWISE SPECIFIED DIMENSIONS ARE IN INCHES AND INCLUDE CHEMICALLY APPLIED OR PLATED FINISHES

UNLESS OTHERWISE SPECIFIED MATERIAL 5052-H32
FINISH 8 ALUMINUM
5404-YEL. IRIDITE

UNLESS OTHERWISE SPECIFIED:

1. USE MATERIAL THICKNESS FOR MAXIMUM RADIUS ON ALL BENDS.
2. ALL ANGULAR BENDS 90 DEGREES.
3. REMOVE ALL BURRS AND SHARP EDGES.
4. MOUNT INSERTS AFTER FINISHING.

NOTICE TO PERSONS RECEIVING THIS DRAWING THE TECHNICAL MATERIEL CORPORATION claims proprietary right in the material disclosed hereon. This drawing is issued in confidence for engineering information only and may not be reproduced or used to manufacture anything shown hereon without permission from THE TECHNICAL MATERIEL CORPORATION to the user. This drawing is loaned for mutual assistance and is subject to recall at any time.