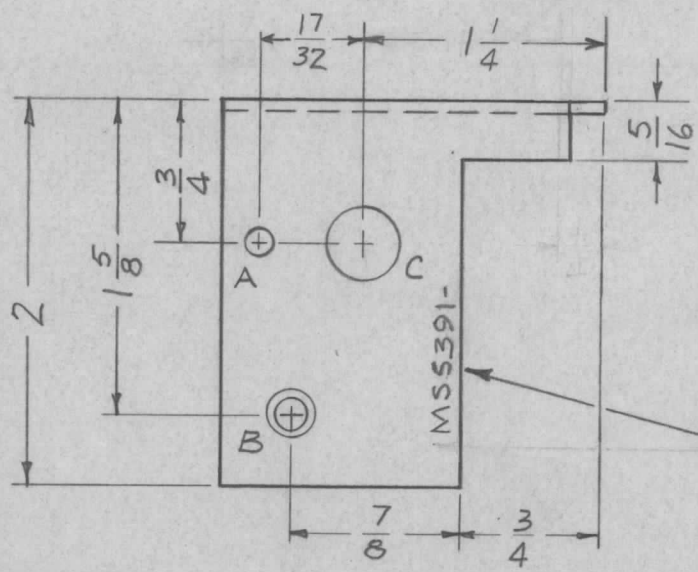
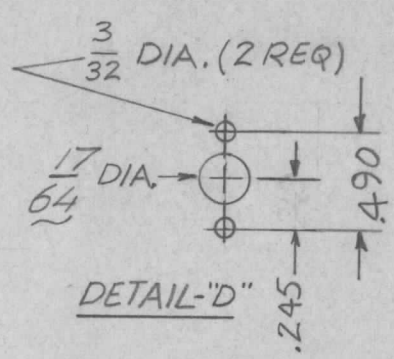
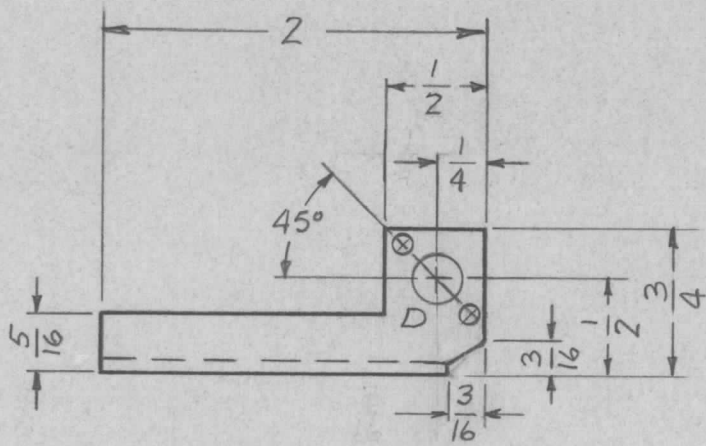


APPLICATION			REVISIONS						
QTY	MODEL USED ON	ASS'Y NO.	LTR	DESCRIPTION	DATE	E.M.N.NO	DRAFT	CHKD	APPD
1	SME-6		X	EXP. RELEASE	4-1-68	-			
			Ø	ORIG. RELEASE FOR PROD.	4-18-68			R.G.	
			A	CHG. DIA. FR 1/4 TO 17/64 (DET. D)	7-1-70	19918	GE		



HOLE	DESCRIPTION	REQ
A	9/64 DIA.	1
B	DR. 144 DIA. C'SINK 82° TO .284 DIA.	1
C	3/8 DIA.	1
D	SEE DETAIL	1

MARK TMC P/N 1/8 HIGH
GOTHIC W/LATEST REV
LETTER SHARP CORNER

NOTE:
BREAK ALL EDGES
& SHARP CORNERS

UNLESS OTHERWISE SPECIFIED DIMENSIONS ARE IN INCHES AND INCLUDE CHEMICALLY APPLIED OR PLATED FINISHES		REQ'D	ITEM	PART NUMBER	DESCRIPTION	SYM.
DECIMALS .X ± .05 .XX ± .01 .XXX ± .005		O. POSE		LIST OF MATERIAL		SK 3270-000
FRACTIONS TOLS. 1/64 ANGLES 0°-30'		FINAL APPROVAL		DATE		
MATERIAL .062 THK. ALUMINUM 5052-H32		MECH. DES.		DATE		
FINISH S404 YEL IDIRITE		ELECT. DES.		DATE		
S401-451		CHECKED		DATE		
		DRAWN		DATE		
THE TECHNICAL MATERIEL CORP. MAMARONECK, NEW YORK BRACKET, MTG, ADJ. RESISTOR						

NOTICE TO PERSONS RECEIVING THIS DRAWING
THE TECHNICAL MATERIEL CORPORATION claims proprietary right in the material disclosed hereon. This drawing is issued in confidence for engineering information only and may not be reproduced or used to manufacture anything shown hereon without permission from THE TECHNICAL MATERIEL CORPORATION to the user. This drawing is loaned for mutual assistance and is subject to recall at any time.

SIZE	CODE IDENT. NO.	DWG NO.	ISSUE
A	82679	MS5391	A
SCALE	1:1	SHEET	OF