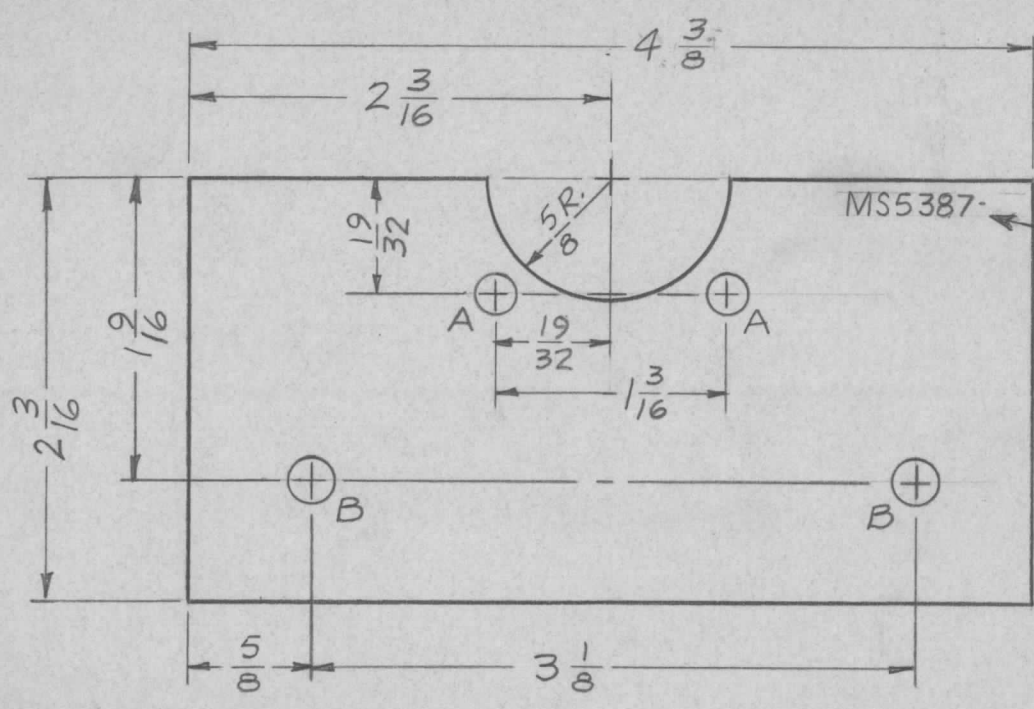


APPLICATION			REVISIONS						
QTY	MODEL USED ON	ASS'Y NO.	LTR	DESCRIPTION	DATE	E.M.N.NO	DRAFT	CHKD	APPD
2	RAK-III-2	BMA 158	X	EXP. RELEASE	3/26/68	-	H.S.	/	R.G.
			Ø	ORIG. RELEASE FOR PROD.	3-27-68	Ø	R.G.		



MARK TMC P/N 1/8" HIGH
GOTHIC W/LATEST
REV. LETTER

HOLES	DESCRIPTION	REQ
A	13/64 DIA.	2
B	15/64 DIA.	2

UNLESS OTHERWISE SPECIFIED DIMENSIONS ARE IN INCHES AND INCLUDE CHEMICALLY APPLIED OR PLATED FINISHES		REQ'D	ITEM	PART NUMBER	DESCRIPTION	SYM.
DECIMALS .X ± .05 .XX ± .01 .XXX ± .005		F. BUDETTI				
FRACTIONS 1/64 ANGLES 0° - 30'		LIST OF MATERIAL				
MATERIAL 0.01 THK ALUMINUM 5052-H32		FINAL APPROVAL	A. P. BUDETTI		DATE	3-26-68
FINISH S520 TEX. VINYL PAINT		MECH. DES.	A. P. BUDETTI		DATE	3-26-68
S401-451		ELECT. DES.	R. L. LUTHER		DATE	3-26-68
		CHECKED	/		DATE	3-26-68
		DRAWN	H.S.		DATE	3/26/68
					THE TECHNICAL MATERIEL CORP. MAMARONECK, NEW YORK	
					PLATE, MTG, DIRECTIONAL COUPLER	

NOTICE TO PERSONS RECEIVING THIS DRAWING THE TECHNICAL MATERIEL CORPORATION claims proprietary right in the material disclosed hereon. This drawing is issued in confidence for engineering information only and may not be reproduced or used to manufacture anything shown hereon without permission from THE TECHNICAL MATERIEL CORPORATION to the user. This drawing is loaned for mutual assistance and is subject to recall at any time.				SIZE A	CODE IDENT. NO. 82679	DWG NO. MS5387	ISSUE Ø
SCALE 1:1			SHEET		OF		