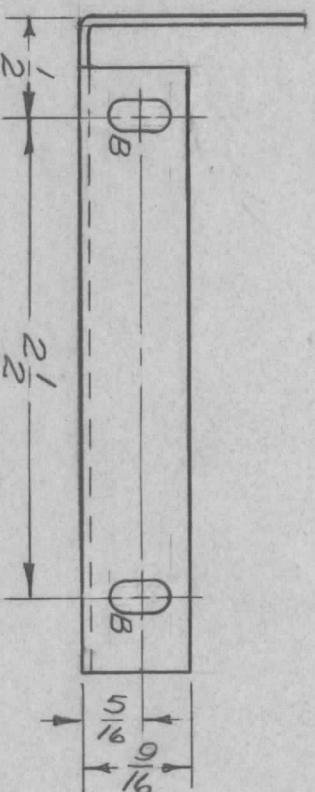
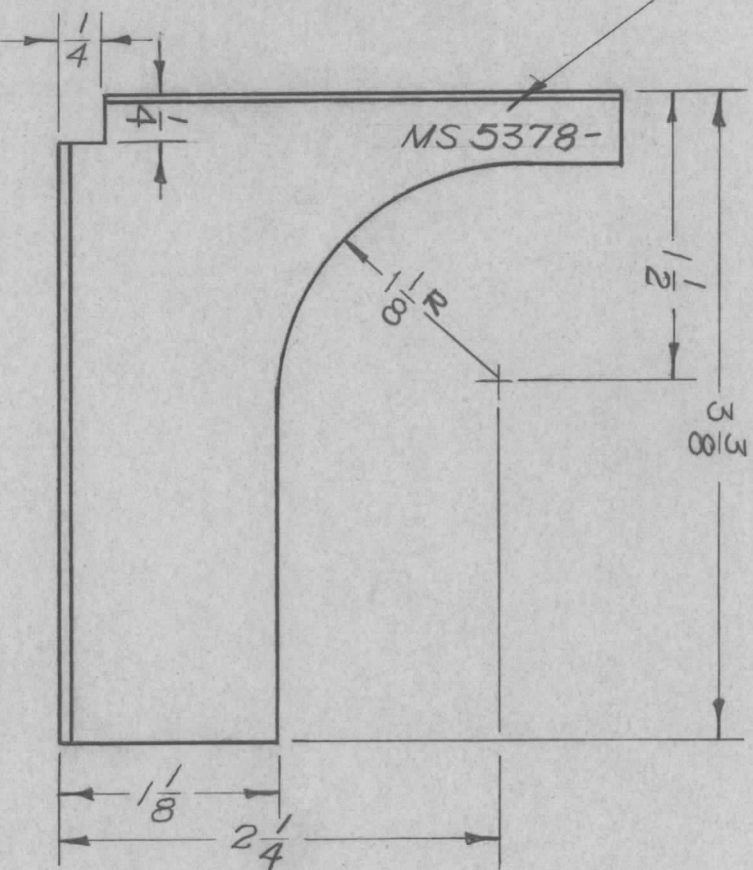
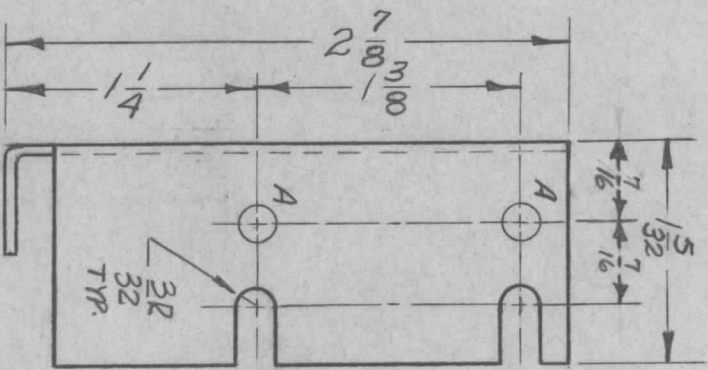


REVISIONS							
ZONE	LTR	DESCRIPTION	DATE	E.M.N.NO	DRAFT	CHKD	APPD
	X	EXP. RELEASE	3/4/68	-	Eng	MS	
	Ø	ORIG. RELEASE FOR PROD	3/24/69		RG		
	A	SUPERSEDED NT ADDED	8/11/69	19531	GE	AKP	EDM

MARK TMC P/N $\frac{1}{8}$ HIGH GOTHIC
W/LATEST REVISION LETTER.



HOLES	DESCRIPTION	REQ.
A	$\frac{1}{64}$ DIA.	2
B	$\frac{5}{32} \times \frac{5}{16}$ SLOT	2

SUPERSEDED

DIRECTLY REPLACED BY
MS 5192-1

REQ'D ITEM	PART NUMBER	DESCRIPTION	SYM.
S	DEMRCO	LIST OF MATERIAL SK 3234-006-7	

THE TECHNICAL MATERIEL CORP.
MAMARONECK, NEW YORK

BRACKET, LEDEX, REAR

DATE	DATE	DATE	DATE	DATE	DATE	DATE	DATE	DATE	DATE
3/27/69	3/27/69	3/27/69	3/27/69	3/27/69	3/27/69	3/27/69	3/27/69	3/27/69	3/27/69

DECIMALS	TOLS.	FRACTIONS	ANGLES
.X ± .05		1/64	
.XX ± .01			0° - 30'
.XXX ± .005			

QTY / UNIT	MODEL USED ON	ASS'Y NO.
1	RTD-SA	
1	RTD-5	

NOTICE TO PERSONS RECEIVING THIS DRAWING
THE TECHNICAL MATERIEL CORPORATION claims proprietary right in the material disclosed hereon. This drawing is issued in confidence for engineering information only and may not be reproduced or used to manufacture anything shown hereon without permission from THE TECHNICAL MATERIEL CORPORATION to the user. This drawing is loaned for mutual assistance and is subject to recall at any time.

UNLESS OTHERWISE SPECIFIED:
1. USE MATERIAL THICKNESS FOR MAXIMUM RADIUS ON ALL BENDS
2. ALL ANGULAR BENDS 90 DEGREES
3. REMOVE ALL BURRS AND SHARP EDGES