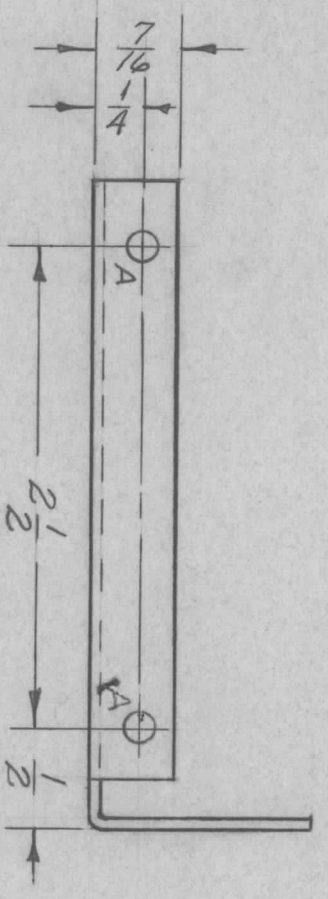
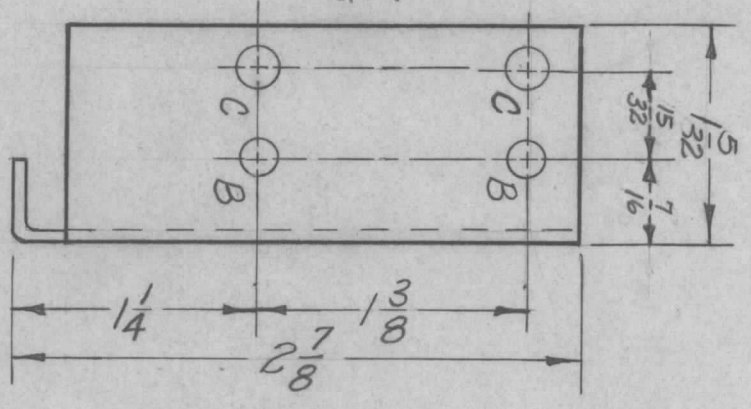
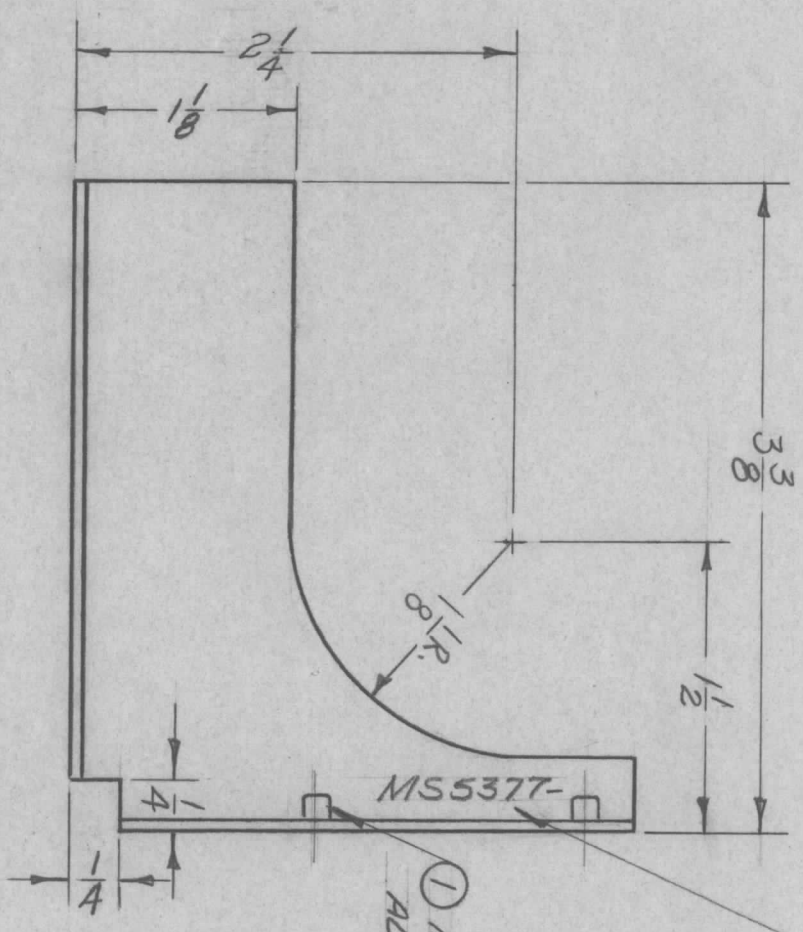


MARK TMC P/N $\frac{1}{8}$ HIGH GOTHIC
W/LATEST REVISION LETTER



REVISIONS							
ZONE	LTR	DESCRIPTION	DATE	E.M.N. NO	DRAFT	CHKD	APPD
	X	EXP. RELEASE	3/5/68	-	Ed	MS	
	Ø	ORIG. RELEASE FOR PROD	3/21/69		Ed		
	A	SUPERSEDED	8.11.69	19531	GE	MS	EM

HOLES	DESCRIPTION	REQ.
A	9/64 DIA.	2
B	11/64 DIA.	2
C	.191-.194 DIA.	2

SUPERSEDED
DIRECTLY REPLACED BY
MS 5192-2

REQ'D ITEM	PART NUMBER	DESCRIPTION	SYM.
2	NT129-632-4	NUT, PLAIN SPLINE	C

LIST OF MATERIAL
THE TECHNICAL MATERIEL CORP.
MAMARONECK, NEW YORK

BRACKET, LEDEX FRONT

QTY / UNIT	1	MODEL USED ON	RTD-5A	ASSY NO.	
APPLICATION		CODE	A	S901-451	

DECIMALS	.X ± .05	TOLS.	1/64
	.XX ± .01	ANGLES	0° .30'
	.XXX ± .005		
MATERIAL	.0517TH ALUMINUM		
FINISH	5052-H32		
	S404		
	YELLOW IRIDIOTE		

FINAL APPROVAL	DATE	
Mech. Des.	3/21/69	
Elect. Des.	3-21-69	
CHECKED	DATE	
Ed	3/27/68	
DRAWN	DATE	
Ed	3/25/68	

SIZE	CODE IDENT. NO.	DWG NO.	ISSUE
B	82679	MS 5377	A
SCALE	1:1		SHEET
			OF

UNLESS OTHERWISE SPECIFIED

1. USE MATERIAL THICKNESS FOR MAXIMUM RADIUS ON ALL BENDS.
2. ALL ANGULAR BENDS 90 DEGREES.
3. REMOVE ALL BURRS AND SHARP EDGES.
4. MOUNT INSERTS AFTER FINISHING.

NOTICE TO PERSONS RECEIVING THIS DRAWING
THE TECHNICAL MATERIEL CORPORATION claims proprietary right in the material disclosed hereon. This drawing is issued in confidence for engineering information only and may not be reproduced or used to manufacture anything shown hereon without permission from THE TECHNICAL MATERIEL CORPORATION to the user. This drawing is loaned for mutual assistance and is subject to recall at any time.