

7

6

5

4

3

2

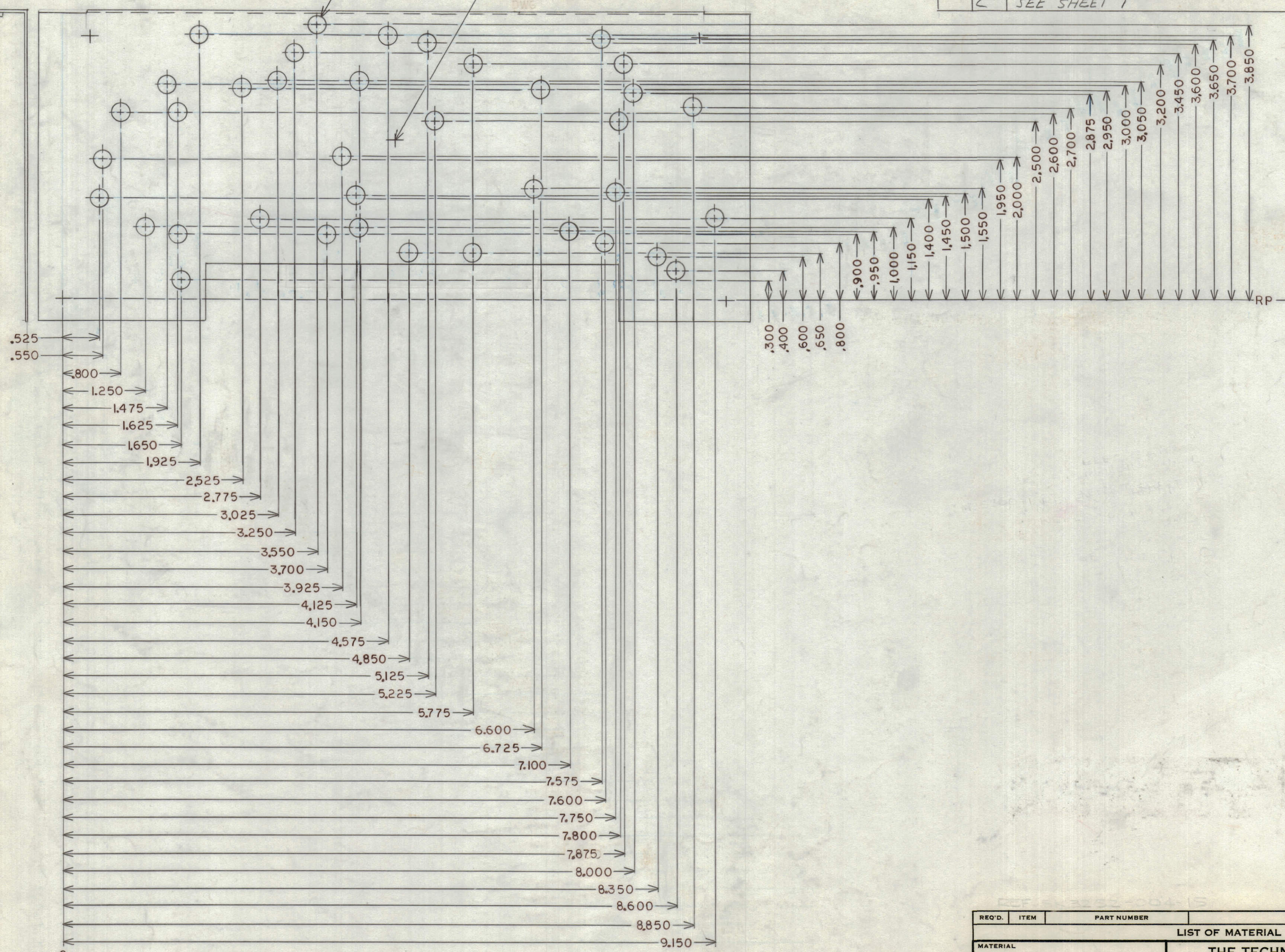
1

REVISIONS							
ZONE	SYM	DESCRIPTION	DATE	E.M.N. NO.	DRAFT	CHKD	APPD
	Ø	ORIGINAL RELEASE	11/2/66				
	A	SEE SHEET ONE	1/27/69	19264	9E	JDA	OP
	B	SEE SHEET 3 OF 6	2/2/69	19247	9E	JDA	OP
	C	SEE SHEET 1		19660			

OUTSIDE VIEW OF SHIELD

.250±.003DIA
38 PLCS

EXISTING MOUNTING HOLES (9/64 DIA)
5 PLCS PER DWG SK3252-004-15 PT-1



REQ'D.	ITEM	PART NUMBER	DESCRIPTION	SYMBOL
LIST OF MATERIAL SK 3252-004-39				
MATERIAL		THE TECHNICAL MATERIEL CORP. MAMARONECK, NEW YORK		
FINISH		TITLE ELECTRICAL SHIELD DRILL PRINT A 4693 A9 A10 A11 A12		
UNLESS OTHERWISE SPECIFIED DIMENSIONS ARE IN INCHES AND INCLUDE CHEMICALLY APPLIED OR PLATED FINISHES		DRAWN R. J. Watson	DATE 8 Dec 67	FINAL APPROVAL JDA
DECIMALS .X ± .05 .XX ± .01 .XXX ± .005		CHECKED JL	DATE 1/9/68	DATE 1/8/68
FRACTIONS ± 1/64 ANGLES ± 0° 30'		ELECT. DES. MS 5360	DATE 1/16/68	DATE 1/18/68
TOLERANCES		MECH. DES. MS 5360	DATE 1/16/68	DATE 1/18/68
		SHEET 2 OF 6	DATE 1/16/68	DATE 1/18/68
		REV. LTR. C	DATE 1/16/68	DATE 1/18/68

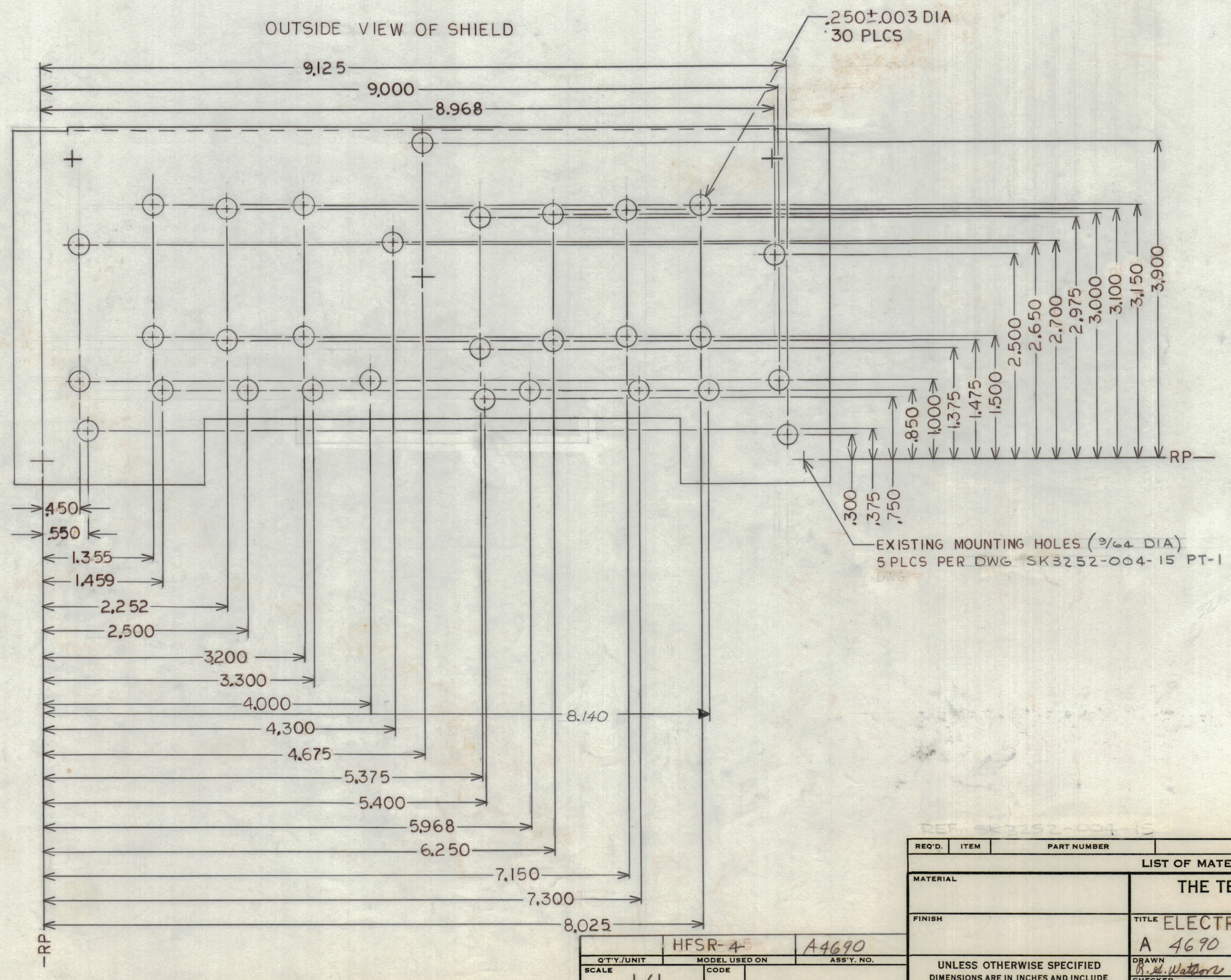
Q'TY./UNIT	HFSR 4	A 4693
SCALE	MODEL USED ON	ASS'Y. NO.
1 / 1	CODE	
THE CONTENTS OF THIS DRAWING ARE THE EXCLUSIVE PROPERTY OF THE TECHNICAL MATERIEL CORP. ITS UNAUTHORIZED USE OR REPRODUCTION IN WHOLE OR IN PART IS STRICTLY FORBIDDEN.		

NOTES

REVISIONS						
ZONE	SYM	DESCRIPTION	DATE	E.M.N. NO.	DRAFT	CHKD
Ø		ORIGINAL RELEASE FOR PRODUCTION	1/15/68	Ø	HG	HP
A		SEE SHEET ONE	1-27-68	19264	GE	file op
B		ADD. DIM. OF 8.140	2-12-68	19247	GE	file op
C		SEE SHEET 1		19660		

H
G
F
E
D
C
B
A

H
G
F
E
D
C
B
A



REQ'D.	ITEM	PART NUMBER	DESCRIPTION	SYMBOL
LIST OF MATERIAL SK 3252-004-38				
MATERIAL		THE TECHNICAL MATERIEL CORP. MAMARONECK, NEW YORK		
FINISH		TITLE ELECTRICAL SHIELD DRILL PRINT HFSR-A5		
UNLESS OTHERWISE SPECIFIED DIMENSIONS ARE IN INCHES AND INCLUDE CHEMICALLY APPLIED OR PLATED FINISHES		DRAWN B. J. Watson	DATE 4/26/68	FINAL APPROVAL [Signature]
DECIMALS .X ± .05 .XX ± .01 .XXX ± .005		CHECKED IL	DATE 1/7/68	DATE 11-8-68
FRACTIONS ± 1/64 ANGLES ± 0° 30'		ELECT. DES. [Signature]	DATE 1/8-68	DATE [Signature]
TOLERANCES		MECH. DES. [Signature]	DATE 1/8-68	DATE [Signature]
SHEET 3 OF 6			REV. LTR.	

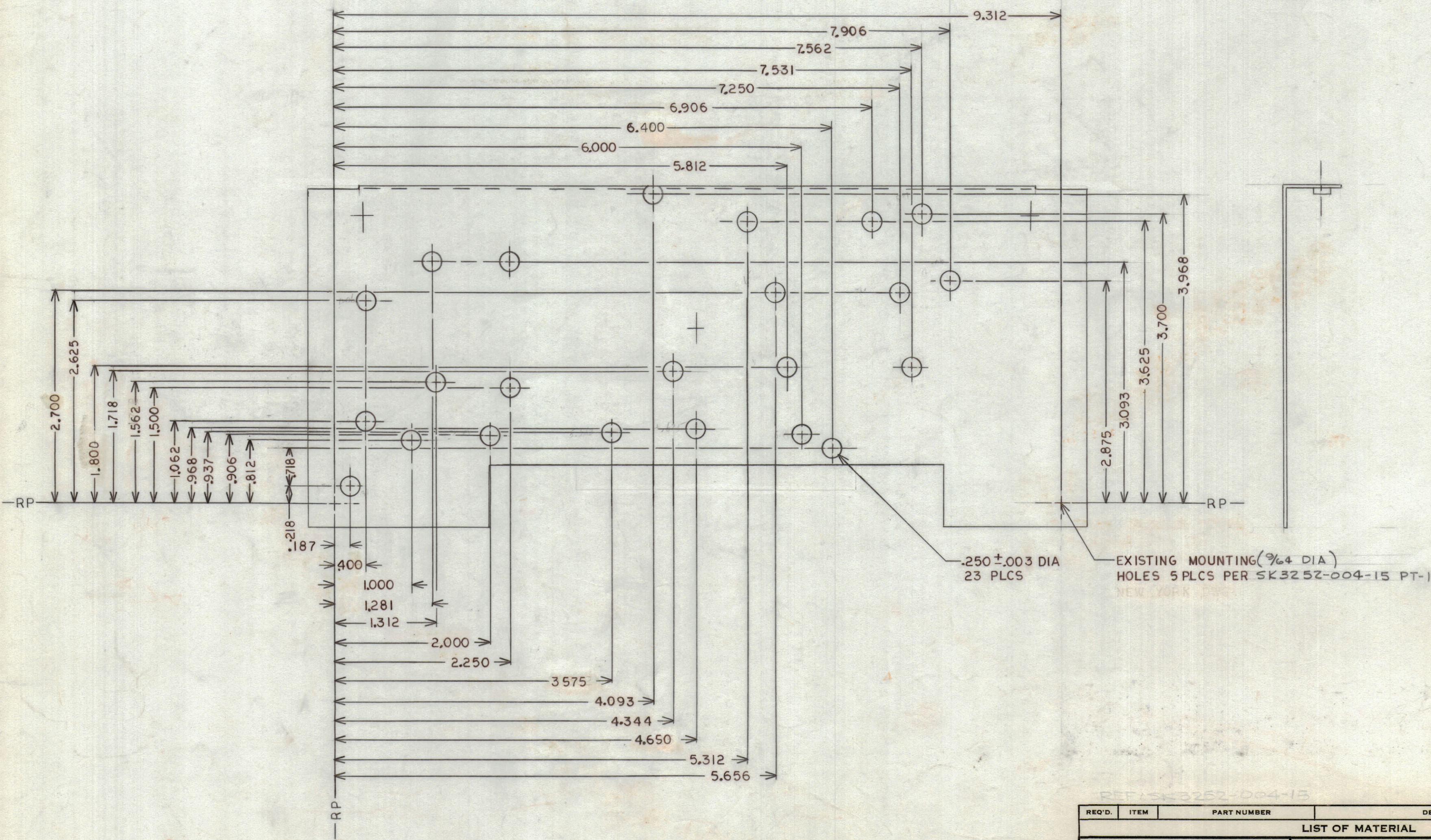
HFSR-45	A4690
Q'TY./UNIT	MODEL USED ON
SCALE 1/1	CODE
ASS'Y. NO.	

NOTES

THE CONTENTS OF THIS DRAWING ARE THE EXCLUSIVE PROPERTY OF THE TECHNICAL MATERIEL CORP. ITS UNAUTHORIZED USE OR REPRODUCTION IN WHOLE OR IN PART IS STRICTLY FORBIDDEN.

REVISIONS							
ZONE	SYM	DESCRIPTION	DATE	E.M.N. NO.	DRAFT	CHKD	APPD
Ø		ORIGINAL RELEASE FOR PRODUCTION	11/18/68		ATG		
A		SEE SHEET ONE	1/27/69	19264	9E	JL	OP
B		SEE SHEET 3 OF 6	2/12/69	19247	9E	JL	OP
C		SEE SHEET 1		19660			

OUTSIDE VIEW OF SHIELD



REQ'D.	ITEM	PART NUMBER	DESCRIPTION	SYMBOL
LIST OF MATERIAL SK 3252-004-37				
MATERIAL		THE TECHNICAL MATERIEL CORP. MAMARONECK, NEW YORK		
FINISH		TITLE ELECTRICAL SHIELD DRILL PRINT A 4689 HFSR A4		
UNLESS OTHERWISE SPECIFIED DIMENSIONS ARE IN INCHES AND INCLUDE CHEMICALLY APPLIED OR PLATED FINISHES		DRAWN R. Watson	DATE 1 DEC 68	FINAL APPROVAL JL
DECIMALS .X ± .05 .XX ± .01 .XXX ± .005		CHECKED J.L.	DATE 1/8/68	DATE 11-8-68
FRACTIONS ± 1/64 ANGLES ± 0° 30'		ELECT. DES. M.S.	DATE 11-8-68	REV. LTR. C
TOLERANCES		MECH. DES. M.S.	DATE 11-8-68	SHEET 4 OF 6

1	HFSR-4	A 4689
Q'TY./UNIT	MODEL USED ON	ASS'Y. NO.
SCALE 1/1	CODE	

THE CONTENTS OF THIS DRAWING ARE THE EXCLUSIVE PROPERTY OF THE TECHNICAL MATERIEL CORP. ITS UNAUTHORIZED USE OR REPRODUCTION IN WHOLE OR IN PART IS STRICTLY FORBIDDEN.

NOTES

7

6

5

4

3

2

1

REVISIONS							
ZONE	SYM	DESCRIPTION	DATE	E.M.N. NO.	DRAFT	CHKD	APPD
	Ø	ORIGINAL RELEASE FOR PRODUCTION	1/18/68		Ø	HIG	NO
	A	SEE SHEET ONE	12/2/67	19264	GE	HIG	OP
	B	SEE SHEET 3 OF 6	2/2/69	19247	GE	HIG	OP
	C	SEE SHEET 1		19660			

H

G

F

E

D

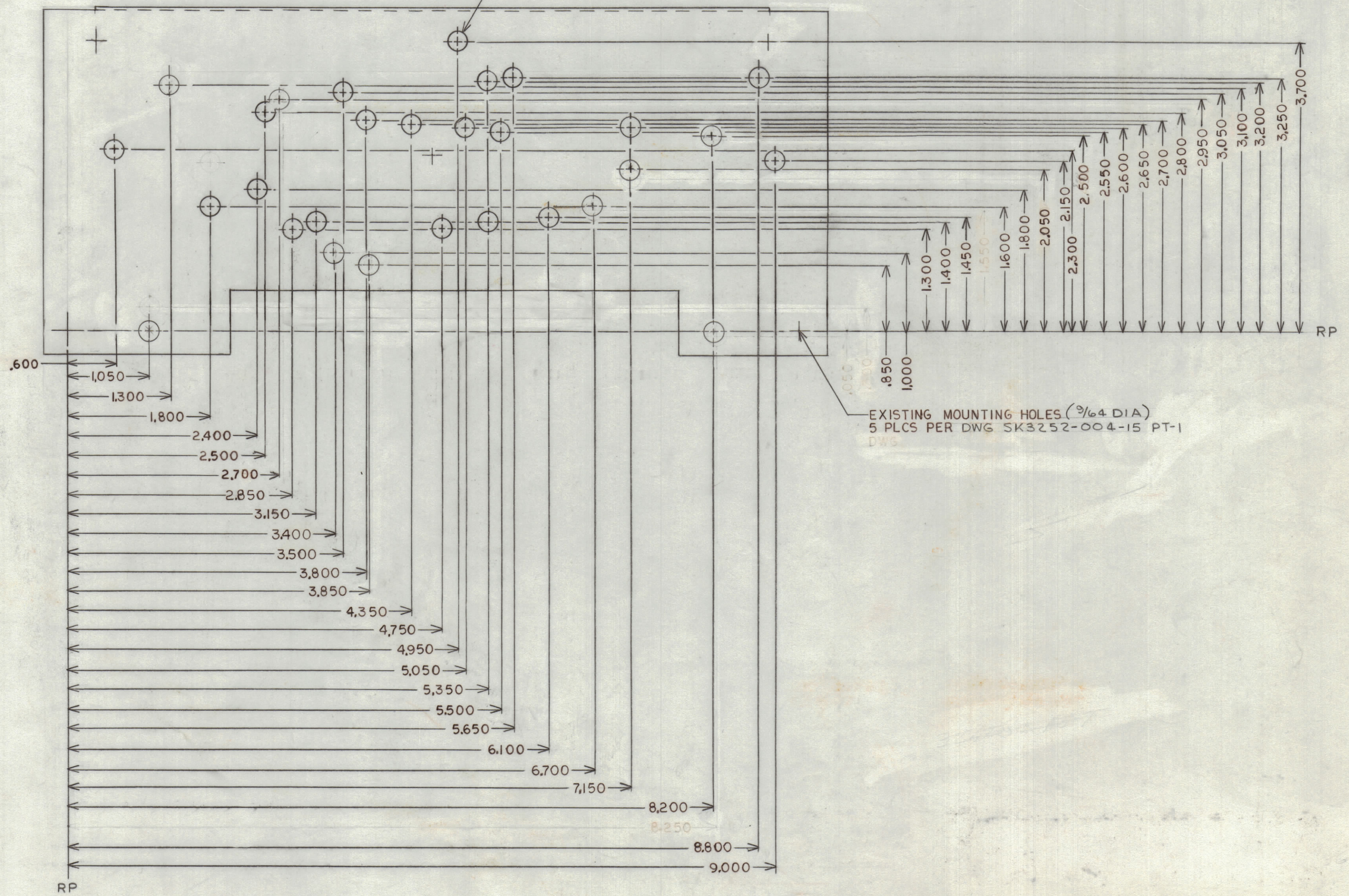
C

B

A

.250±.003 DIA
28 PLCS

OUTSIDE SIDE VIEW OF SHIELD



EXISTING MOUNTING HOLES (3/16 DIA)
5 PLCS PER DWG SK3252-004-15 PT-1
DWS

REQ'D.	ITEM	PART NUMBER	DESCRIPTION	SYMBOL
LIST OF MATERIAL SK 3252-004-36				
MATERIAL		THE TECHNICAL MATERIEL CORP. MAMARONECK, NEW YORK		
FINISH		TITLE ELECTRICAL SHIELD DRILL PRINT A4688 HFSR 4 A3		
DRAWN		DATE	FINAL APPROVAL	
CHECKED		DATE	DATE	
ELECT. DES.		DATE	DATE	
MECH. DES.		DATE	DATE	

QTY./UNIT	HFSR 4	A4688
SCALE	MODEL USED ON	ASS'Y. NO.
1/1		

THE CONTENTS OF THIS DRAWING ARE THE EXCLUSIVE PROPERTY OF THE TECHNICAL MATERIEL CORP. ITS UNAUTHORIZED USE OR REPRODUCTION IN WHOLE OR IN PART IS STRICTLY FORBIDDEN.

NOTES

7

6

5

4

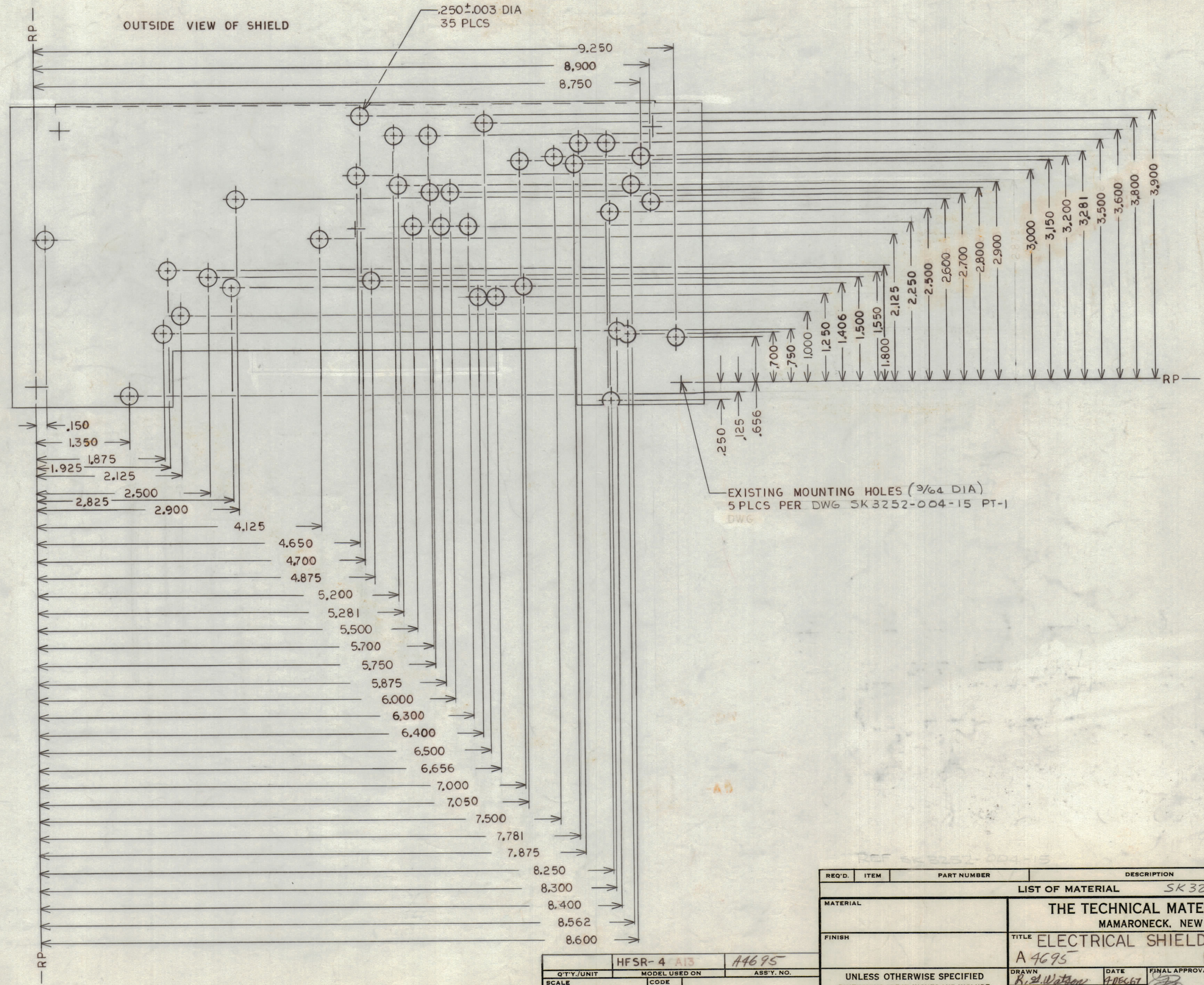
3

2

1

REVISIONS							
ZONE	SYM	DESCRIPTION	DATE	E.M.N. NO.	DRAFT	CHKD	APPD
	Ø	ORIGINAL RELEASE FOR PRODUCTION	11/8/66		HE		JL
	A	SEE SHEET ONE	1/27/67	19264	SE	JL	JP
	B	SEE SHEET 3 OF 6	2/12/68	19247	FE	JL	JP
	C	SEE SHEET 1		19660			

H
G
F
E
D
C
B
A



EXISTING MOUNTING HOLES (3/64 DIA)
5 PLCS PER DWG SK3252-004-15 PT-1
DWG

NOTES

HFSR-4 A13		A4695
Q'TY./UNIT	MODEL USED ON	ASS'Y. NO.
SCALE 1/1	CODE	
THE CONTENTS OF THIS DRAWING ARE THE EXCLUSIVE PROPERTY OF THE TECHNICAL MATERIEL CORP. ITS UNAUTHORIZED USE OR REPRODUCTION IN WHOLE OR IN PART IS STRICTLY FORBIDDEN.		

REQ'D.	ITEM	PART NUMBER	DESCRIPTION	SYMBOL
LIST OF MATERIAL SK3252-004-40				
MATERIAL		THE TECHNICAL MATERIEL CORP. MAMARONECK, NEW YORK		
FINISH		TITLE ELECTRICAL SHIELD DRILL PRINT A4695 HFSR-4 A13		
DRAWN B. Watson	DATE 1/26/67	FINAL APPROVAL JL		DATE 11-8-68
CHECKED JL	DATE 1/2/68	ELECT. DES. MS5360		REV. LTR. C
MECH. DES. JL	DATE 11-8-68	SHEET 6 OF 6		REV. LTR.