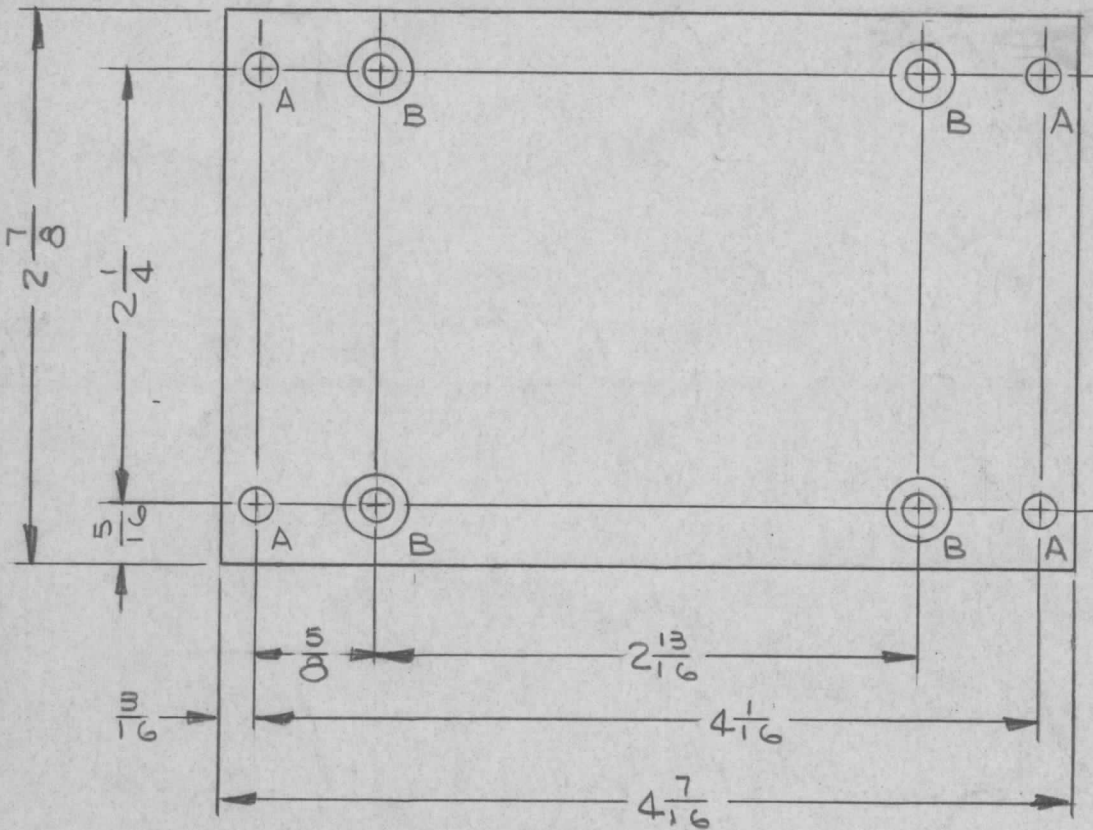


APPLICATION			REVISIONS						
QTY	MODEL USED ON	ASS'Y NO.	LTR	DESCRIPTION	DATE	E.M.N.NO	DRAFT	CHKD	APPD
1	MSAR-4		Ø	ORIG. RELEASE FOR PROD.	11-6-68	Ø	R.G.		<i>Handwritten initials</i>



HOLE LEGEND		
HOLE	DESCRIPTION	REQ
A	11/64 DIA	4
B	.169 DIA & C'SINK 82° TO .337 DIA	4

UNLESS OTHERWISE SPECIFIED DIMENSIONS ARE IN INCHES AND INCLUDE CHEMICALLY APPLIED OR PLATED FINISHES		REQ'D	ITEM	PART NUMBER	DESCRIPTION	SYM.
DECIMALS .X ± .05 .XX ± .01 .XXX ± .005		FRACTIONS 1/64 ANGLES 0° - 30'		LIST OF MATERIAL SK3252-005-19 <b>THE TECHNICAL MATERIEL CORP.</b> MAMARONECK, NEW YORK  <b>PLATE, MTG-XFMR</b>		
MATERIAL 1/8THK ALUM 5052-H32 FINISH YEL IRIDITE S404		FINAL APPROVAL <i>[Signature]</i>	MECH. DES. JL	DATE 11/6/68 5/26/67	SIZE <b>A</b>	
		ELECT. DES.	CHECKED SG	DATE 5/27/67	CODE IDENT. NO. <b>82679</b>	
		DRAWN JL	DATE 5/26/67	DWG NO. <b>MS 533219</b>		ISSUE Ø
NOTICE TO PERSONS RECEIVING THIS DRAWING THE TECHNICAL MATERIEL CORPORATION claims proprietary right in the material disclosed hereon. This drawing is issued in confidence for engineering information only and may not be reproduced or used to manufacture anything shown hereon without permission from THE TECHNICAL MATERIEL CORPORATION to the user. This drawing is loaned for mutual assistance and is subject to recall at any time.				SCALE		SHEET OF