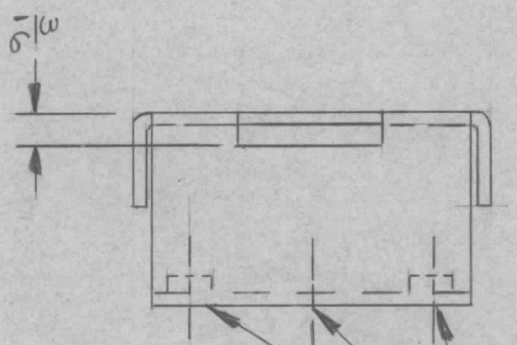
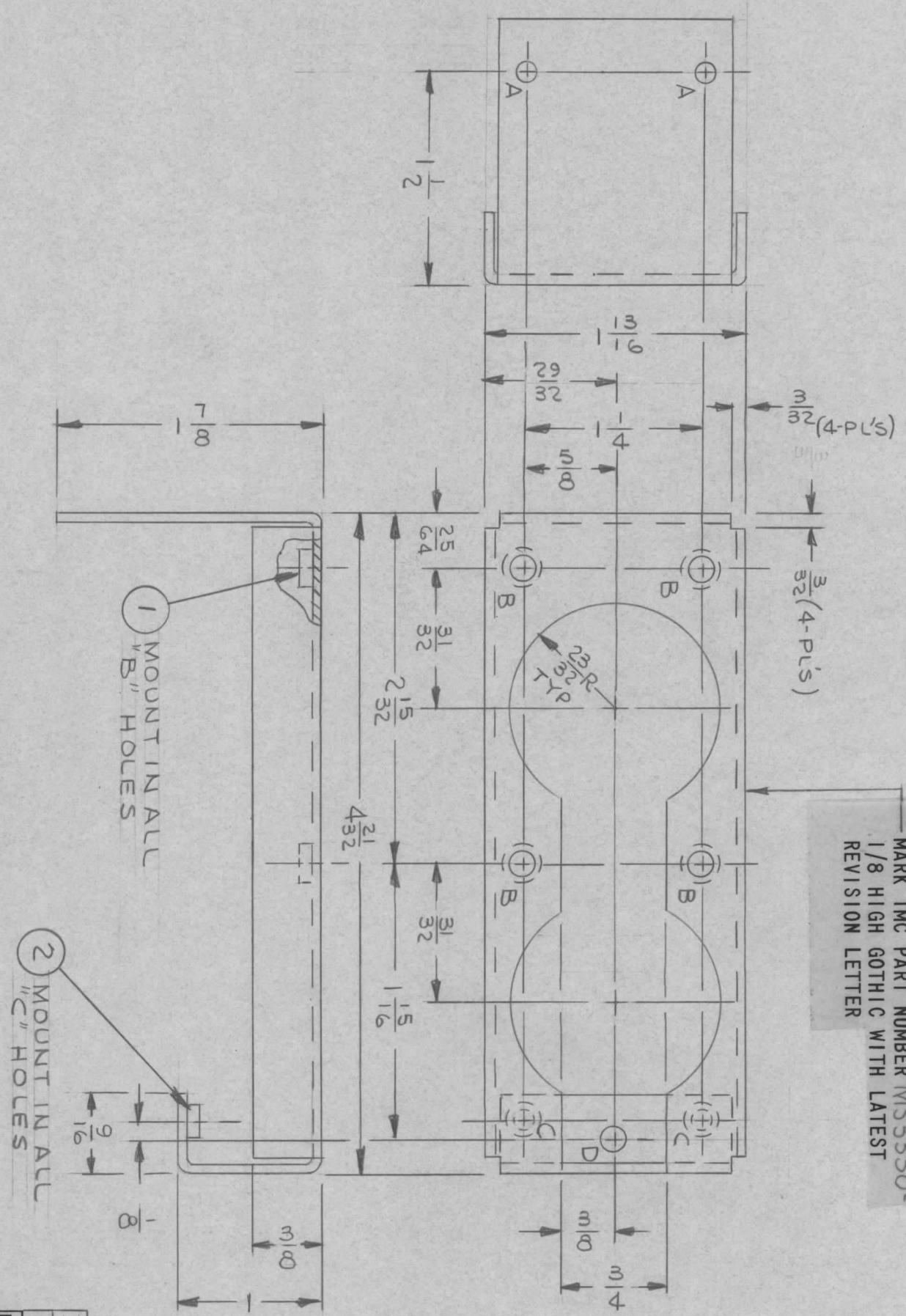


REVISIONS						
ZONE	LTR	DESCRIPTION	DATE	E.M.N.NO	DRAFT	CHKD
	X	EXP. RELEASE	7/24/67		JL	
	Ø	ORIG. RELEASE FOR PROD	11-7-68	Ø	R.G.	
	A	REF. LD2326 DELE.	1/7/69		TH	

MARK TMC PART NUMBER MS5330-1/8 HIGH GOTHIC WITH LATEST REVISION LETTER



HOLE	DESCRIPTION	REQ
A	9/64 DIA	2
B	.191-.194 DIA	4
C	.161-.164 DIA	2
D	11/64 DIA	1

REQ'D ITEM	PART NUMBER	DESCRIPTION	SYM.
2	NT129-440-4	NUT, PLAIN, SPLINE	C
4	NT129-632-4	NUT, PLAIN, SPLINE	B

LIST OF MATERIAL			
FINAL APPROVAL	DATE	MECH. DES.	DATE
<i>[Signature]</i>	11-6-68		
ELECT. DES.	DATE	CHECKED	DATE
		<i>[Signature]</i>	7/27/68
DRAWN	DATE		
JL	7/26/67		

QTY / UNIT	MSAR-4	MODEL USED ON	ASS'Y NO.
APPLICATION			
CODE			

NOTICE TO PERSONS RECEIVING THIS DRAWING
 THE TECHNICAL MATERIEL CORPORATION claims proprietary right in the material disclosed hereon. This drawing is issued in confidence for engineering information only and may not be reproduced or used to manufacture anything shown hereon without permission from THE TECHNICAL MATERIEL CORPORATION to the user. This drawing is loaned for mutual assistance and is subject to recall at any time.

UNLESS OTHERWISE SPECIFIED DIMENSIONS ARE IN INCHES AND INCLUDE CHEMICALLY APPLIED OR PLATED FINISHES			
DECIMALS	FRACTIONS	TOLS.	ANGLES
X ± .05	1/64	± .01	0° - 30'
XX ± .01			
.XXX ± .005			
MATERIAL			
.063 THICK ALUMINUM			
5052-H32			
FINISH			
YELLOW IRIDIOTE			
S404			

SK3252-005-8	SCALE	SIZE	CODE IDENT. NO.	DWG NO.	ISSUE
		B	82679	MS5330	A

BRACKET, SUPPORT-LEDEX
 DUAL
 THE TECHNICAL MATERIEL CORP.
 MAMARONECK, NEW YORK