

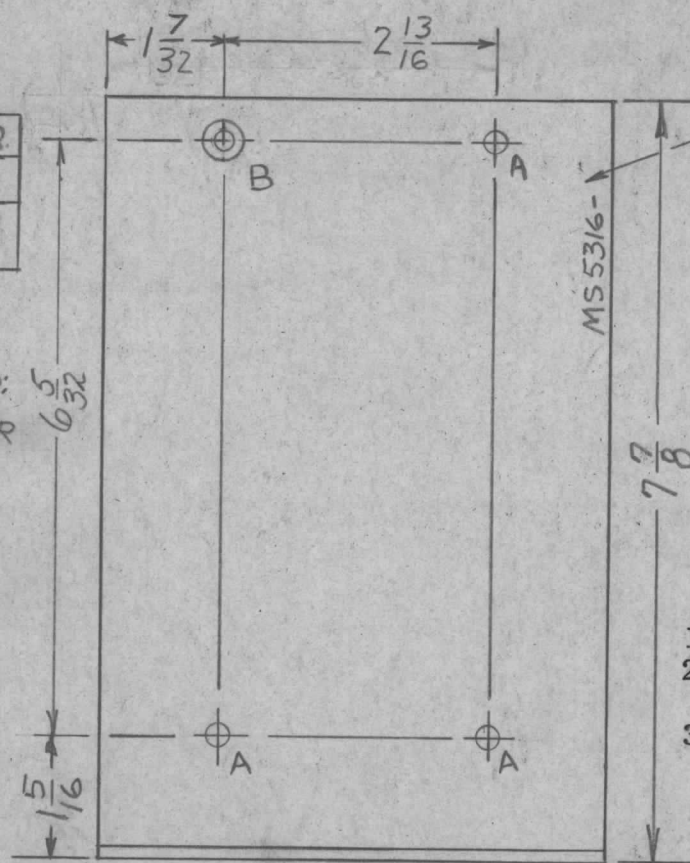
APPLICATION

REVISIONS

QTY	MODEL USED ON	ASS'Y NO.	LTR	DESCRIPTION	DATE	E.M.N.NO	DRAFT	CHKD	APPD
2	GPTA-2.5KJ8	URA/38	X	EXP. RELEASE	12.15.67		A.P.		
2	HFTA-1KJ	RAK137	XI	ONE "A" HOLE DEL.; "B" HOLE ADD.	4-22-68		GDL		
			Ø	ORIG. RELEASE FOR PROD.	4-24-68	Ø	R.G.		
			A	ADD AS PER CUSTOMER SPEC	11/19/71	20457			

HOLE	DESCRIPTION	REQ.
A	15/64 DIA	3
B	.196 D. C/SK182° TO .390 D.	1

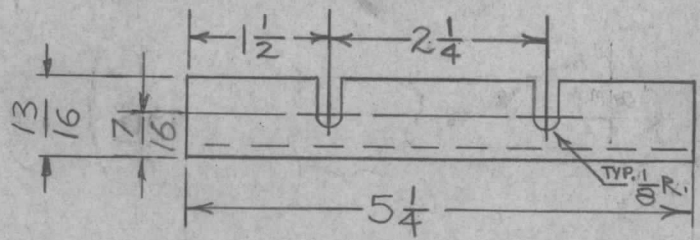
- UNLESS OTHERWISE SPECIFIED:
1. USE MATERIAL THICKNESS FOR MAXIMUM RADIUS ON ALL BENDS.
  2. ALL ANGULAR BENDS 90 DEGREES.
  3. REMOVE ALL BURRS & SHARP EDGES.



MARK TMC P/N 1/8 HIGH GOTHIC W/LATEST REV. LETTER

FINISH NOTES:

1. S404- YEL IRIDITE
2. S114- ZINC CHROMATE PRIMER
3. S115- SMOOTH GRAY ENAMEL OR PER CUSTOMERS SPEC.
4. PRIME & PAINT ALL SURFACES



UNLESS OTHERWISE SPECIFIED DIMENSIONS ARE IN INCHES AND INCLUDE CHEMICALLY APPLIED OR PLATED FINISHES

REQ'D	ITEM	PART NUMBER	DESCRIPTION	SYM.
	BUDETTI LIST OF MATERIAL			
	THE TECHNICAL MATERIEL CORP. MAMARONECK, NEW YORK			
	BRACKET RAK MOUNT, (C-3698/URA 38)			

DECIMALS .X ± .05 .XX ± .01 .XXX ± .005	FRACTIONS 1/64 ANGLES 0° - 30'
MATERIAL .081 ALUMINUM 5052-H32	MECH. DES. ALPETROCCA
FINISH SEE FINISH NOTES S401-451	ELECT. DES.
	CHECKED
	DRAWN ALPETROCCA

FINAL APPROVAL <i>[Signature]</i>	DATE 12-15-67
MECH. DES. ALPETROCCA	DATE 12-15-67
ELECT. DES.	DATE
CHECKED <i>[Signature]</i>	DATE 4-23-68
DRAWN ALPETROCCA	DATE 2-15-67

NOTICE TO PERSONS RECEIVING THIS DRAWING  
THE TECHNICAL MATERIEL CORPORATION claims proprietary right in the material disclosed hereon. This drawing is issued in confidence for engineering information only and may not be reproduced or used to manufacture anything shown hereon without permission from THE TECHNICAL MATERIEL CORPORATION to the user. This drawing is loaned for mutual assistance and is subject to recall at any time.

SIZE A	CODE IDENT. NO. 82679	DWG NO. MS5316	ISSUE A
SCALE DO NOT SCALE		SHEET	OF