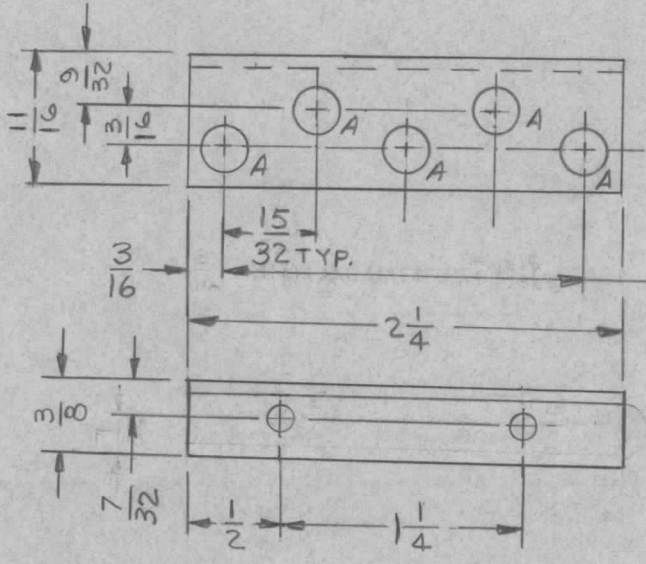


APPLICATION			REVISIONS							
QTY	MODEL USED ON	ASS'Y NO.	LTR	DESCRIPTION	DATE	E.M.N.NO	DRAFT	CHKD	APPD	
1	HFR-4		X1	"B" HOLES WERE 7/64 DIA	12/12/67		JL			
			Ø	ORIG. RELEASE FOR PROD.	11-6-68	Ø	R.G.			



MARK TMC P/N
(MSS305-) 1/8 HIGH
GOTHIC W/LATEST REV.
LETTER.

(4) EQUAL CENTERS EACH 15/32 = 1-7/8

HOLE	DESCRIPTION	REQ
A	7/64 DIA	5
B	.125 DIA	2

UNLESS OTHERWISE SPECIFIED:

1. USE MATERIAL THICKNESS FOR MAXIMUM RADIUS ON ALL BENDS
2. ALL ANGULAR BENDS 90 DEGREES
3. REMOVE ALL BURRS AND SHARP EDGES

<small>UNLESS OTHERWISE SPECIFIED DIMENSIONS ARE IN INCHES AND INCLUDE CHEMICALLY APPLIED OR PLATED FINISHES</small> DECIMALS: .X ± .05, .XX ± .01, .XXX ± .005 FRACTIONS: 1/64, ANGLES: 0° -30' MATERIAL .063 THICK ALUMINUM 5052-H32 FINISH S404 YEL IRIDITE S401-451	REQ'D	ITEM	PART NUMBER	DESCRIPTION	SYM.		
			HOGAN (ZETENA)	LIST OF MATERIAL SK 3252-003-48			
	FINAL APPROVAL	DATE	THE TECHNICAL MATERIEL CORP. MAMARONECK, NEW YORK MTG, BKT, CONNECTOR-OSCILLATOR				
	MECH. DES.	DATE					
ELECT. DES.	DATE						
CHECKED	DATE						
DRAWN	DATE						
NOTICE TO PERSONS RECEIVING THIS DRAWING THE TECHNICAL MATERIEL CORPORATION claims proprietary right in the material disclosed hereon. This drawing is issued in confidence for engineering information only and may not be reproduced or used to manufacture anything shown hereon without permission from THE TECHNICAL MATERIEL CORPORATION to the user. This drawing is loaned for mutual assistance and is subject to recall at any time.				SIZE	CODE IDENT. NO.	DWG NO.	ISSUE
				A	82679	MS5305	Ø
				SCALE	1:1	SHEET	OF