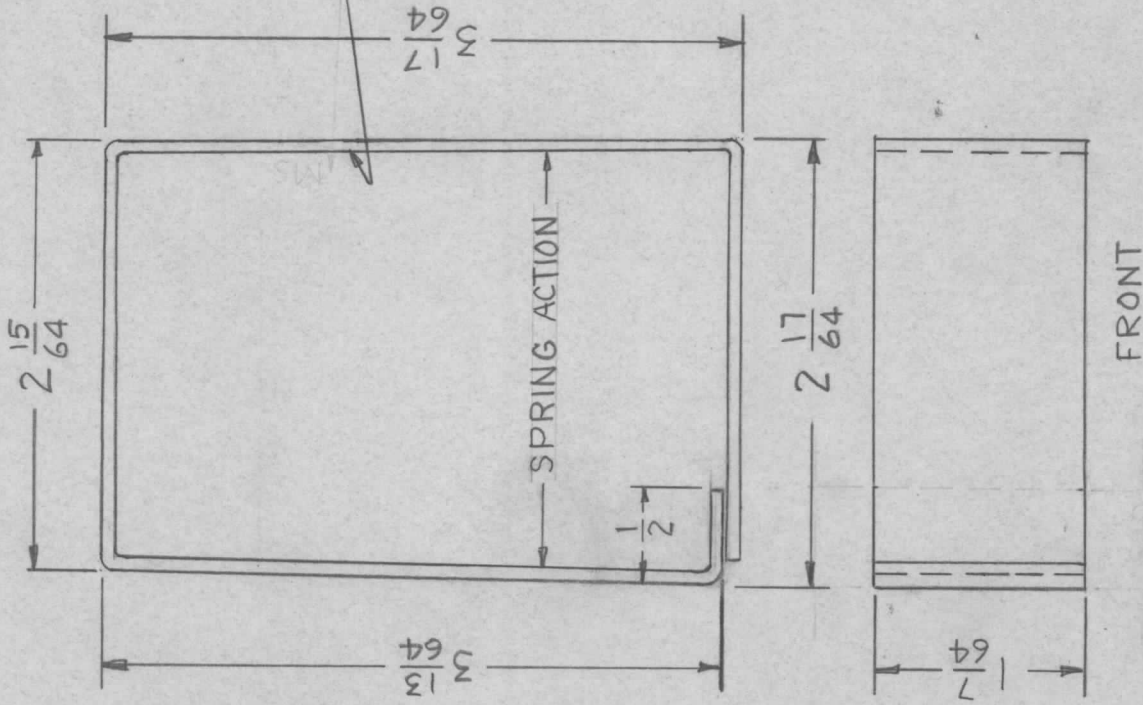


APPLICATION

QTY	MODEL USED ON	ASSY NO.	LTR
1	RTIH-3		X
			Ø

REVISIONS

DESCRIPTION	DATE	E.M.N.NO	DRAFT	CHKD	APPD
EXP. RELEASE	11-22-67	+	HG		
Ø ORIG. RELEASE	12-4-68			SG	



MARK TMC P/N MS 5269 -
 1/8 HIGH GOTHIC W/LATEST
 REV. LETTER.

UNLESS OTHERWISE SPECIFIED:
 1. USE MATERIAL THICKNESS FOR MAXIMUM RADIUS ON ALL BENDS
 2. ALL ANGULAR BENDS 90 DEGREES
 3. REMOVE ALL BURRS AND SHARP EDGES

UNLESS OTHERWISE SPECIFIED DIMENSIONS ARE IN INCHES AND INCLUDE CHEMICALLY APPLIED OR PLATED FINISHES	REQ'D	ITEM	PART NUMBER	DESCRIPTION	SYM.
DECIMALS .X ± .05 .XX ± .01 .XXX ± .005	F.	FEATON		LIST OF MATERIAL	
FRACTIONS 1/64 ANGLES 0° .30'	FIN. APPROVAL			THE TECHNICAL MATERIEL CORP. MAMARONECK, NEW YORK	
MATERIAL: 062 ALUMINUM 5052-H32	DATE				
FINISH: BLACK ANODIZE S401-451	DATE			SPACER, READOUT	
	MECH. DES.				
	ELECT. DES.				
	CHECKED				
	DRAWN				
	DATE				
	DATE				
	DATE				

NOTICE TO PERSONS RECEIVING THIS DRAWING
 THE TECHNICAL MATERIEL CORPORATION claims proprietary right in the material disclosed hereon. This drawing is issued in confidence for engineering information only and may not be reproduced or used to manufacture anything shown hereon without permission from THE TECHNICAL MATERIEL CORPORATION to the user. This drawing is loaned for mutual assistance and is subject to recall at any time.

SIZE	CODE IDENT. NO.	DWG NO.	ISSUE
A	82679	MS 5269	1
SCALE	1:1	SHEET	OF