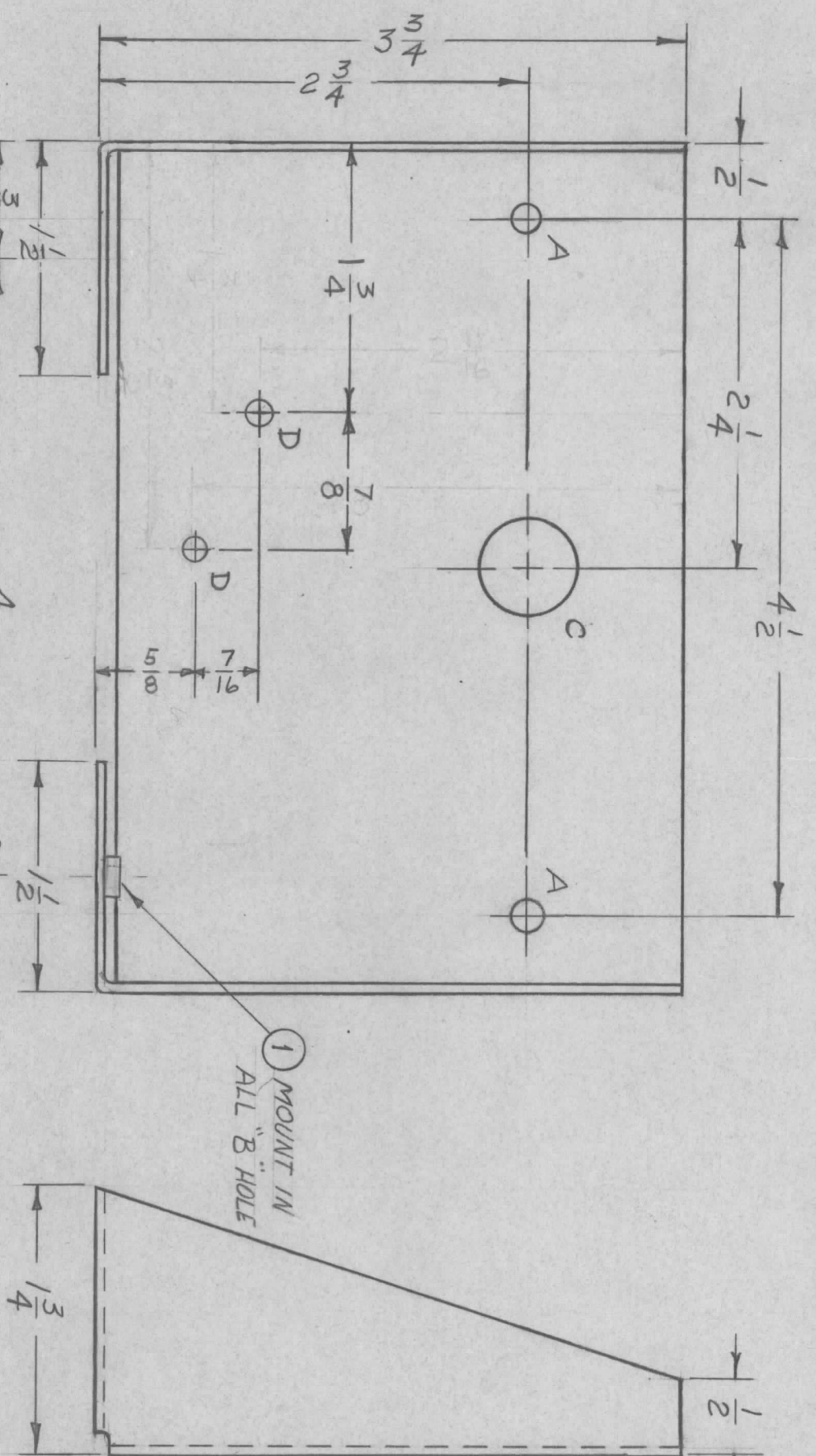
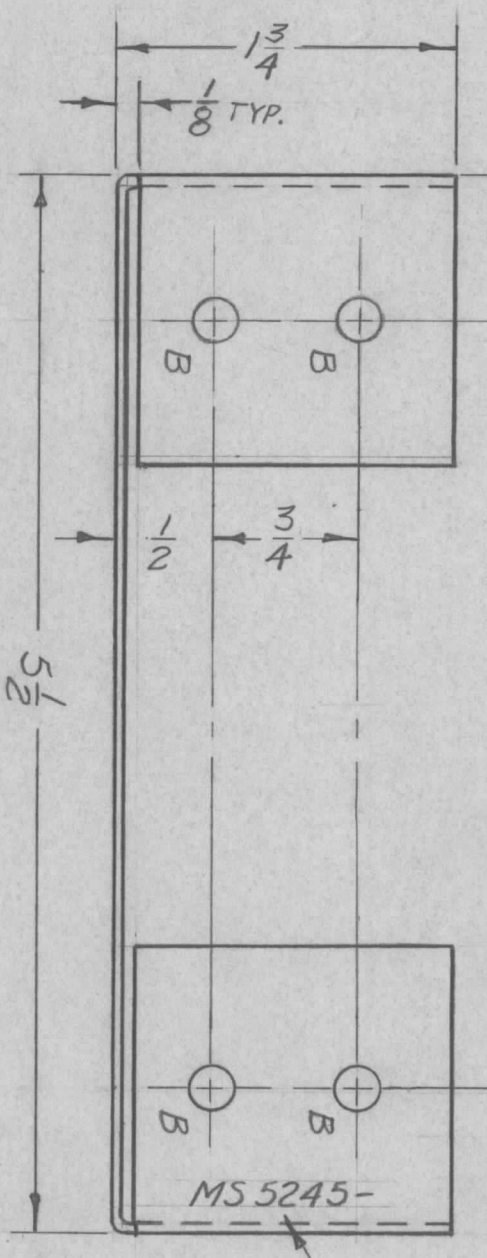


REVISIONS						
ZONE	LTR	DESCRIPTION	DATE	E.M.N.NO	DRAFT	CHKD
	X	EXP. RELEASE	11/13/67		<i>inf</i>	
	X1	2 D HOLES ADDED	11-20-67		<i>H.R.</i>	
	Ø	ORIGINAL RELEASE FOR PRODUCTION	4/2/68		<i>H.R.</i>	



HOLE	DESCRIPTION	REQ.
A	13/64 DIA.	2
B	.221-.224 DIA.	4
C	5/8 DIA.	1
D	11/64 DIA.	2

MARK TMC P/N 1/8 HIGH
GOTHIC W/LATEST REV.
LETTER.



REQ'D ITEM	PART NUMBER	DESCRIPTION	SYM.
4	1	NT129-832-4	NUT, PLAIN SPLINE
			B

LIST OF MATERIAL SK 3290 - MS 2014

FINAL APPROVAL: *[Signature]* DATE: 4-3-69
MECH. DES.: *[Signature]* DATE: 4-2-68
ELECT. DES.: DATE:
CHECKED: *[Signature]* DATE: 4-1-68
DRAWN: *[Signature]* DATE: 11/13/67

THE TECHNICAL MATERIEL CORP.
MAMARONECK, NEW YORK

BKKT, MTG, SWITCH

SIZE	CODE IDENT. NO.	DWG NO.	ISSUE
B	82679	MS 5245	Ø
SCALE	1:1	SHEET	OF

QTY / UNIT	MODEL USED ON	ASS'Y NO.
1	BCT 10KA	AX 680
APPLICATION		
CODE	S 401-451	
FINISH S 404		
MATERIAL .081 ALUMINIUM		
5052-H32		
YELLOW IRIDITE		

UNLESS OTHERWISE SPECIFIED DIMENSIONS ARE IN INCHES AND INCLUDE CHEMICALLY APPLIED OR PLATED FINISHES

DECIMALS: X ± .05 TOLS. 1/64
XX ± .01 ANGLES 0° .30'
.XXX ± .005

NOTICE TO PERSONS RECEIVING THIS DRAWING
THE TECHNICAL MATERIEL CORPORATION claims proprietary right in the material disclosed hereon. This drawing is issued in confidence for engineering information only and may not be reproduced or used to manufacture anything shown hereon without permission from THE TECHNICAL MATERIEL CORPORATION to the user. This drawing is loaned for mutual assistance and is subject to recall at any time.

- UNLESS OTHERWISE SPECIFIED:
1. USE MATERIAL THICKNESS FOR MAXIMUM RADIUS ON ALL BENDS
 2. ALL ANGULAR BENDS 90 DEGREES
 3. REMOVE ALL BURRS AND SHARP EDGES
 4. MOUNT INSERTS AFTER FINISHING