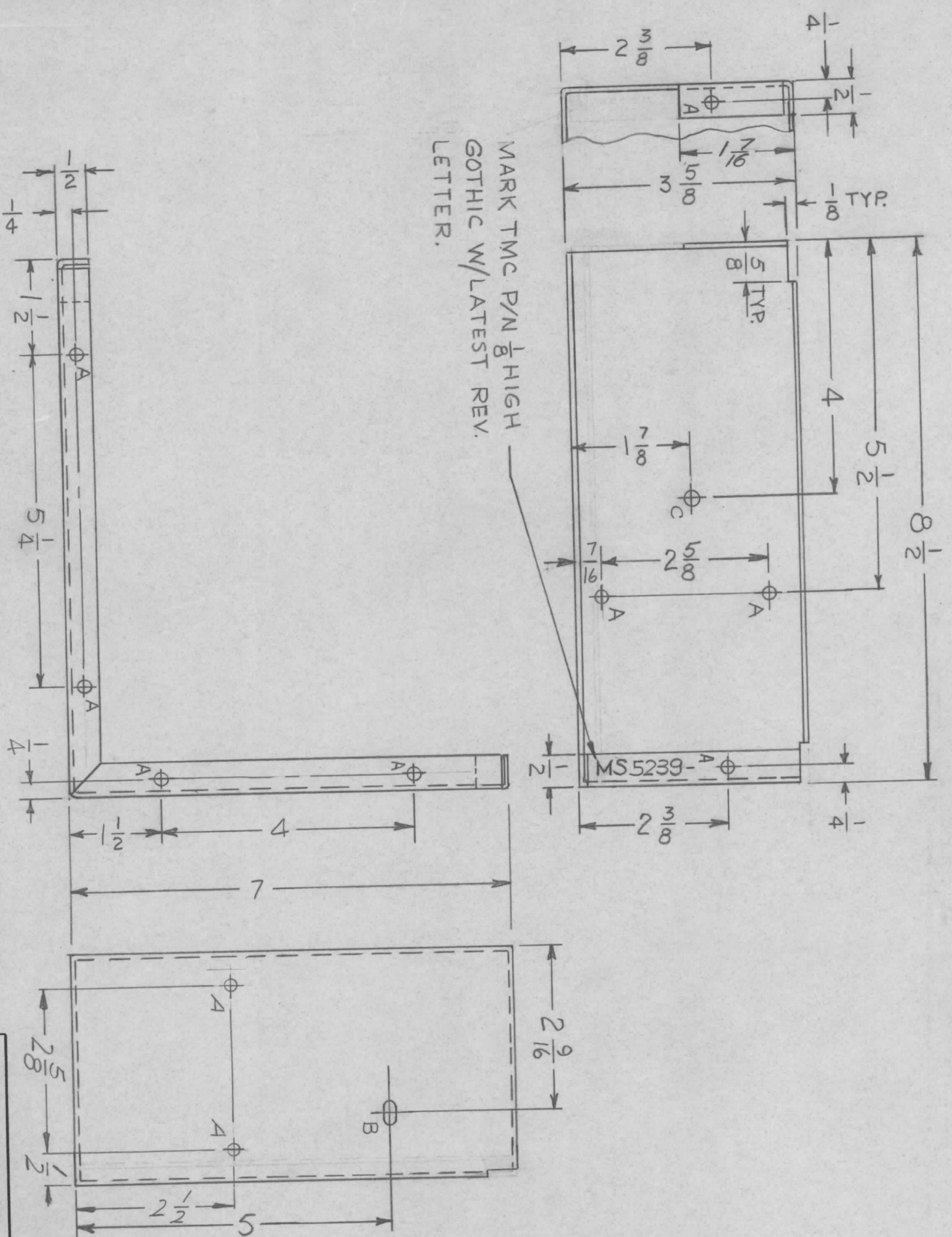


ZONE	LTR	DESCRIPTION	DATE	E.M.N. NO	DRAFT	CHKD	APPD
	X1	2A, 1B & 1C HOLES ADDED	12-13-67	-	H2		
	Ø	ORIGINAL RELEASE FOR PRODUCTION	4-2-68	Ø	H2		
	A	NOTCH ADDED & P/N RELOC. 12/26/68	19/14/2	K44	H2		FB
	B	3/64x 1/2 SLOT WAS 3/64 DIA HOLE ADDED 2 A HOLES	4/27/71	20340	GE	QCB	

HOLE	DESCRIPTION	REQ
A	11/64 DIA.	10
B	3/64x1/2 SLOT	1
C	15/64 DIA.	1

MARK TMC P/N 1/8 HIGH
GOTHIC W/LATEST REV.
LETTER.



QTY / UNIT	1	MODEL USED ON	BCT-10KA	ASSY NO.	AX 683
APPLICATION		CODE	S401-451		

UNLESS OTHERWISE SPECIFIED DIMENSIONS ARE IN INCHES AND INCLUDE CHEMICALLY APPLIED OR PLATED FINISHES

DECIMALS: X ± .05, .XX ± .01, .XXX ± .005

FRACTIONS: 1/64, 0° .30'

MATERIAL: 064 THK ALUMINUM 5052-H32

FINISH: 5404 YEL. IRIDITE

REQ'D ITEM	F. BUDETTI	PART NUMBER	SK 3290-5022	SYM.	
FINAL APPROVAL	[Signature]	DATE	4/15/68		
MECH. DES.	[Signature]	DATE	4/15/68		
ELECT. DES.	[Signature]	DATE	4/15/68		
CHECKED	[Signature]	DATE	4/15/68		
DRAWN	[Signature]	DATE	12-13-67		

LIST OF MATERIAL

DESCRIPTION: SHIELD, RF. CHASSIS

THE TECHNICAL MATERIEL CORP.
MAMARONECK, NEW YORK

SIZE: B

CODE IDENT. NO.: 82679

DWG NO.: MS 5239

SCALE: 1:2

SHEET: OF

ISSUE: B

UNLESS OTHERWISE SPECIFIED:

1. USE MATERIAL THICKNESS FOR MAXIMUM RADIUS ON ALL BENDS
2. ANGULAR BENDS 90 DEGREES
3. REMOVE ALL BURRS AND SHARP EDGES

NOTICE TO PERSONS RECEIVING THIS DRAWING

THE TECHNICAL MATERIEL CORPORATION claims proprietary right in the material disclosed hereon. This drawing is issued in confidence for engineering information only and may not be reproduced or used to manufacture anything shown hereon without permission from THE TECHNICAL MATERIEL CORPORATION to the user. This drawing is loaned for mutual assistance and is subject to recall at any time.