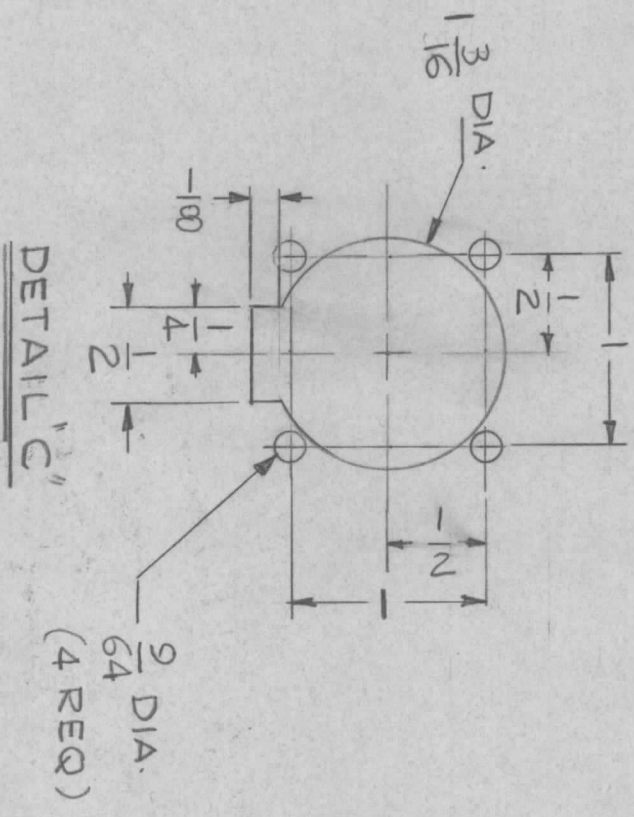
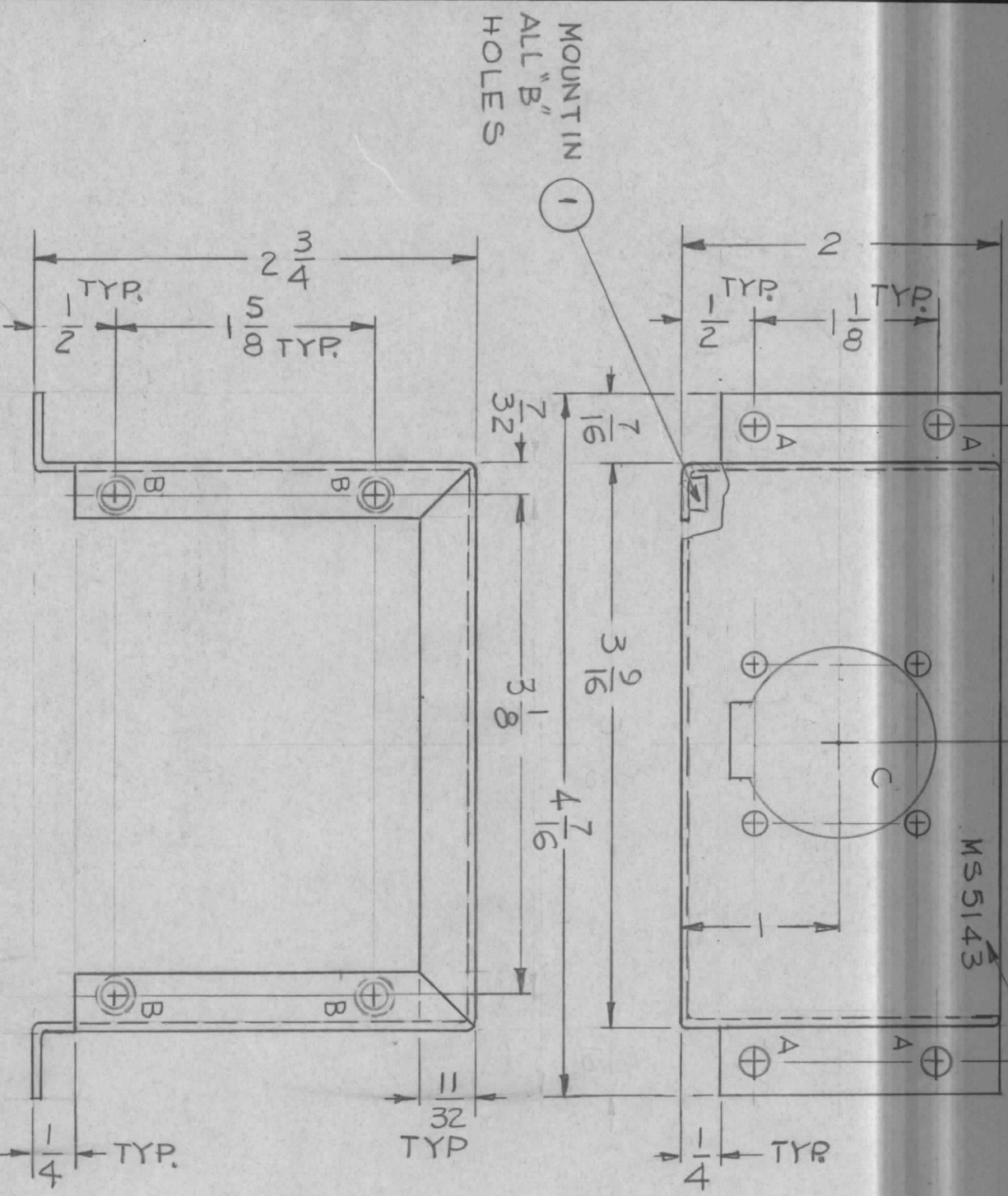


ZONE	LTR	DESCRIPTION	DATE	E.M.N. NO.	DRAFT	CHKD	APPD
	X	EXP. RELEASE	9-1-67	X	G.D.L.		
		ORIG. RELEASE FOR PROD	2-11-69	Ø	EG		

MARK TMC P/NO 1/8
HIGH GOTHIC W/LATEST
REVISION LETTER



HOLE	DESCRIPTION	REQ
A	11/64 DIA	4
B	.161 - .164 DIA	4
C	SEE DETAIL	1

REQ'D ITEM	PART NUMBER	DESCRIPTION	SYM.
4	1	NT129-440-3 NUT, PLAIN SPLINE	B

LIST OF MATERIAL SK3252-007-4
THE TECHNICAL MATERIEL CORP.
 MAMARONECK, NEW YORK

COVER, LEDEX & P.C. BOARD

DATE	2-7-69	DATE	9-1-67
MECH. DES.	<i>[Signature]</i>	DATE	9-1-67
ELECT. DES.	<i>[Signature]</i>	DATE	9-1-67
CHECKED	SG	DATE	9-1-67
DRAWN	G.D.L.	DATE	9-1-67

QTY / UNIT	1	MODEL USED ON	RTMU-41B, A	ASS'Y NO.	
APPLICATION		CODE	A	5401-251	

NOTICE TO PERSONS RECEIVING THIS DRAWING
 THE TECHNICAL MATERIEL CORPORATION claims proprietary right in the material disclosed hereon. This drawing is issued in confidence for engineering information only and may not be reproduced or used to manufacture anything shown hereon without permission from THE TECHNICAL MATERIEL CORPORATION to the user. This drawing is loaned for mutual assistance and is subject to recall at any time.

- UNLESS OTHERWISE SPECIFIED:
1. USE MATERIAL THICKNESS FOR MAXIMUM RADIUS ON ALL BENDS
 2. ALL ANGULAR BENDS 90 DEGREES
 3. REMOVE ALL BURRS AND SHARP EDGES
 4. MOUNT INSERTS AFTER FINISHING