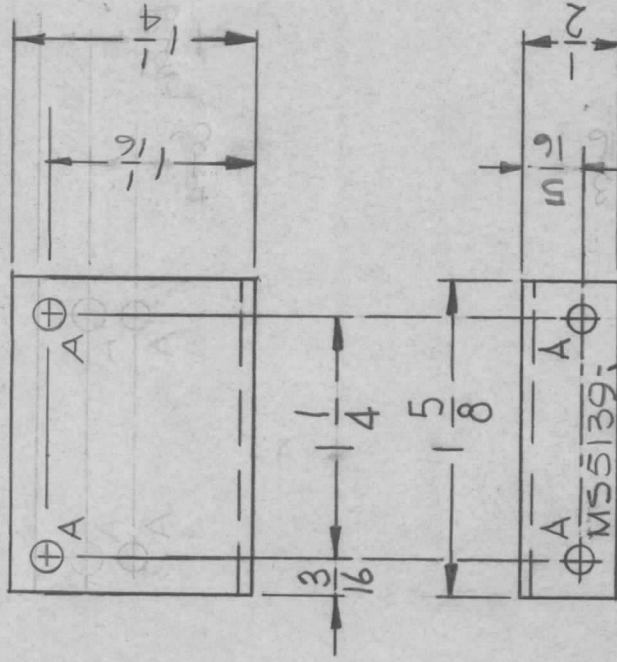


APPLICATION

REVISIONS

QTY	MODEL USED ON	ASSY NO.	LTR	DESCRIPTION	DATE	E.M.N.NO	DRAFT	CHKD	APPD
1	LPA-2		X	EXP. RELEASE	7.11.67	4-	LHW		
			X1	7.1" WAS 5/8 - 1/4 WAS 7/8	9/25/67		EMU		
			Ø	ORIG. RELEASE FOR PROD.	9-26-67	Ø	RG		
			A	1-1/16 DIM. WAS 1	6.3.68	18947	HAG.		



MARK TMC PT/No
1/8 HIGH GOTHIC W/LATEST
REVISION LETTER

UNLESS OTHERWISE SPECIFIED:

1. USE MATERIAL THICKNESS FOR MAXIMUM RADIUS ON ALL BENDS
2. ALL ANGULAR BENDS 90 DEGREES
3. REMOVE ALL BURRS AND SHARP EDGES

UNLESS OTHERWISE SPECIFIED DIMENSIONS ARE IN INCHES AND INCLUDE CHEMICALLY APPLIED OR PLATED FINISHES	REQ'D	ITEM	PART NUMBER	DESCRIPTION	SYM.
DECIMALS .X ± .05 .XX ± .01 .XXX ± .005				LIST OF MATERIAL	
FRACTIONS 1/64				THE TECHNICAL MATERIEL CORP.	SK3240-12
ANGLES 0° .30°				MAMARONECK, NEW YORK	
MATERIAL, 062 ALUM. 5052-H32				BRACKET, MTG., LEDEX	
FINISH S404 YEL. IRIDITE					
S401-451					

NOTICE TO PERSONS RECEIVING THIS DRAWING
THE TECHNICAL MATERIEL CORPORATION claims proprietary right in the material disclosed hereon. This drawing is issued in confidence for engineering information only and may not be reproduced or used to manufacture anything shown hereon without permission from THE TECHNICAL MATERIEL CORPORATION to the user. This drawing is loaned for mutual assistance and is subject to recall at any time.

SIZE	CODE IDENT. NO.	DWG NO.	ISSUE
A	82679	MS5139	A
SCALE 1:1		SHEET 8/8	OF