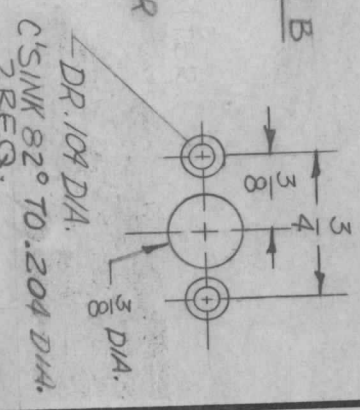


ZONE	LTR	DESCRIPTION	DATE	E.M.N. NO	DRAFT	CHKD	APPD
X	EXP. RELEASE		7-8-67				
X1	B HOLES WERE 191-194, 632 NT DEL9-25-67		9-26-67		ENJ		
Ø	ORIG. RELEASE FOR PROD.		11-9-67	18600	RG		
A	COMPLETELY REV.		1-3-68	18699	RG.		
B	MS5134-2 WAS NO E HOLES REQ		3-14-68	18814	RG.		
C	COMPLETELY REV.		5/16/68	18929	RG.		
D	3/4 LIPS WERE 5/8		5-20-71	20346	RG.		
E	2 J HOLES ADDED				RG.		

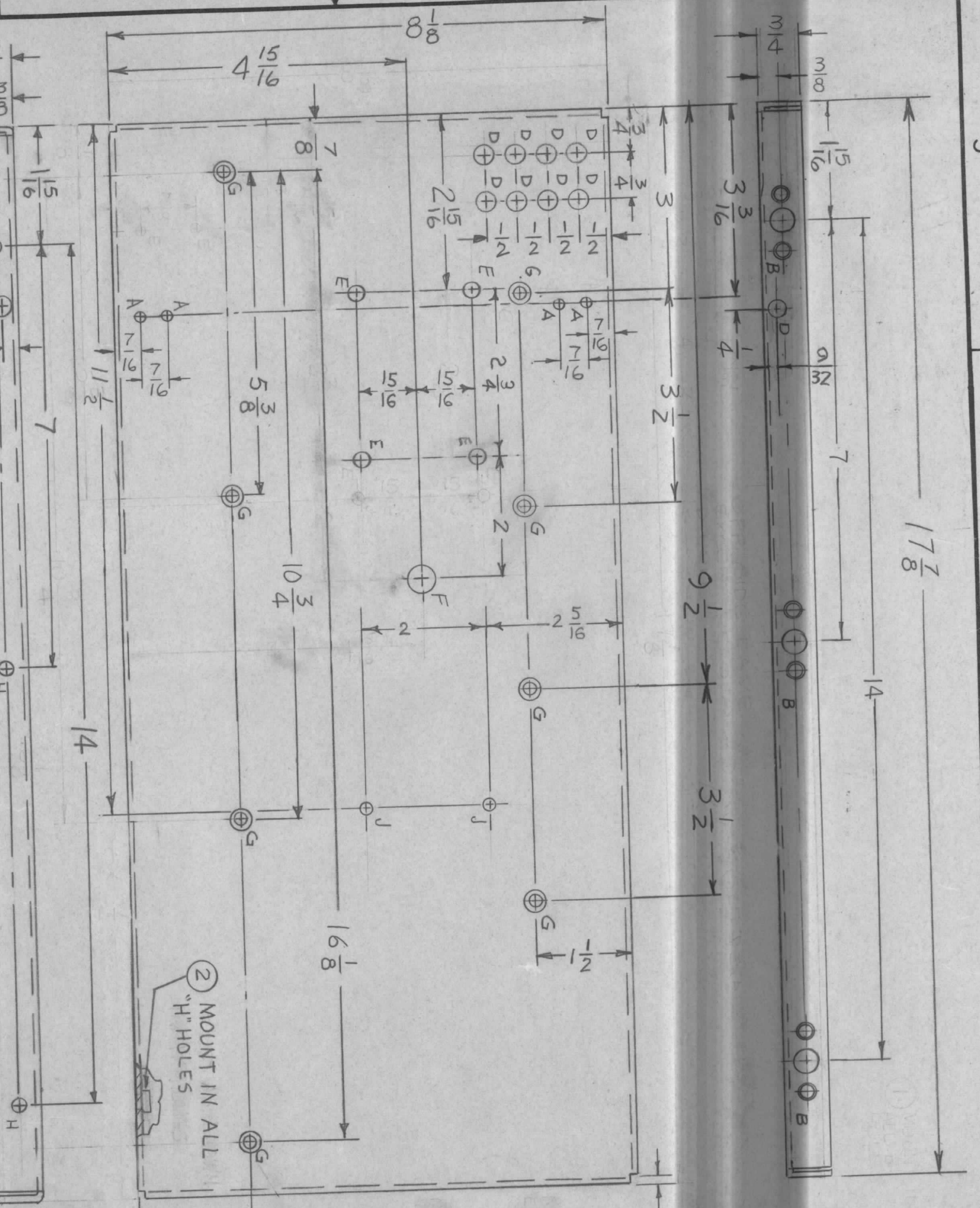
OPP. SIDE SAME

HOLES	DESCRIPTION	REQ
A	9/64 DIA.	4
B	SEE DETAIL	3
C	.221-.224 DIA.	4
D	5/16 DIA.	10
E	1/4 DIA.	4
F	5/16 DIA.	1
G	DR. 169 DIA. C SINK 82° TO 337 D	8
H	.191-194	3
J	11/64 DIA	2

* MS5134-1 EXCLUDE 4 TOP "G" HOLES & 2 "J" HOLES (RIGHT PLATE)
 * MS5134-2 EXCLUDE A, & D HOLES



MARKTMC P/N
 1/8 HIGH GOTHIC
 W/LATEST REV LETTER



IEA	LPA-2	ASS'Y NO.
QTY / UNIT	MODEL USED ON	
5401-451	APPLICATION	
	CODE	

DECIMALS	FRACTIONS
X ± .05 TOLS.	1/64 ANGLES
.XX ± .01	0°-30'
.XXX ± .005	

MATERIAL	062 THK ALUMINUM
FINISH	5052-H32
FINISH	S404 YEL. IRIDITE

REQ'D ITEM	PART NUMBER	DESCRIPTION	SYM.
3	NT129-632-4	NUT, PLAIN, SPLINE	H
4	NT129-832-4	NUT, PLAIN, SPLINE	C

LIST OF MATERIAL SK3240-3#4

THE TECHNICAL MATERIEL CORP.
 MAMARONECK, NEW YORK

PLATE, RIGHT & LEFT

SIZE	CODE IDENT. NO.	DWG. NO.	ISSUE
B	82679	MS5134	E

NOTICE TO PERSONS RECEIVING THIS DRAWING
 THE TECHNICAL MATERIEL CORPORATION claims proprietary right in the material disclosed hereon. This drawing is issued in confidence for engineering information only and may not be reproduced or used to manufacture anything shown hereon without permission from THE TECHNICAL MATERIEL CORPORATION to the user. This drawing is loaned for mutual assistance and is subject to recall at any time.

- UNLESS OTHERWISE SPECIFIED:
1. USE MATERIAL THICKNESS FOR MAXIMUM RADIUS ON ALL BENDS
 2. ALL ANGULAR BENDS 90 DEGREES
 3. REMOVE ALL BURRS AND SHARP EDGES
 4. MOUNT INSERTS AFTER FINISHING

A B C

4

3

2

1

(10-66)