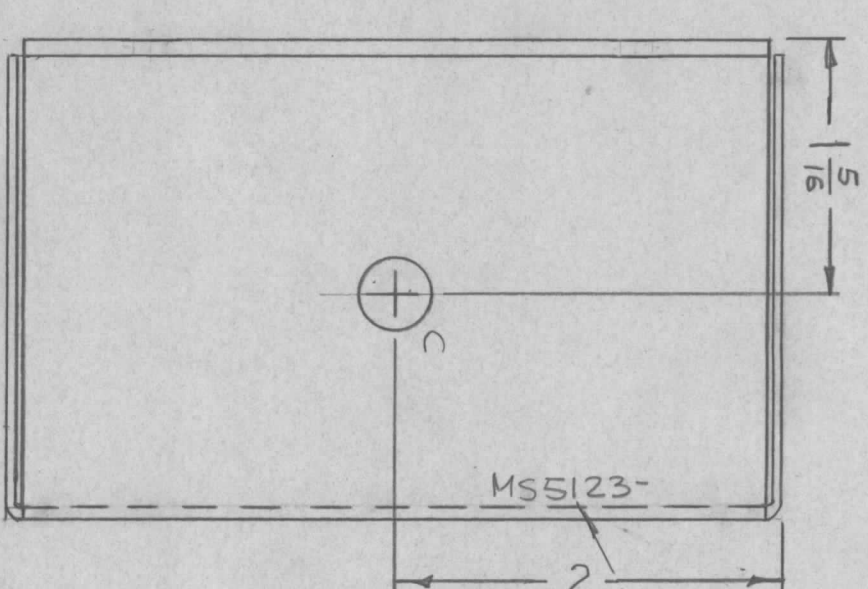
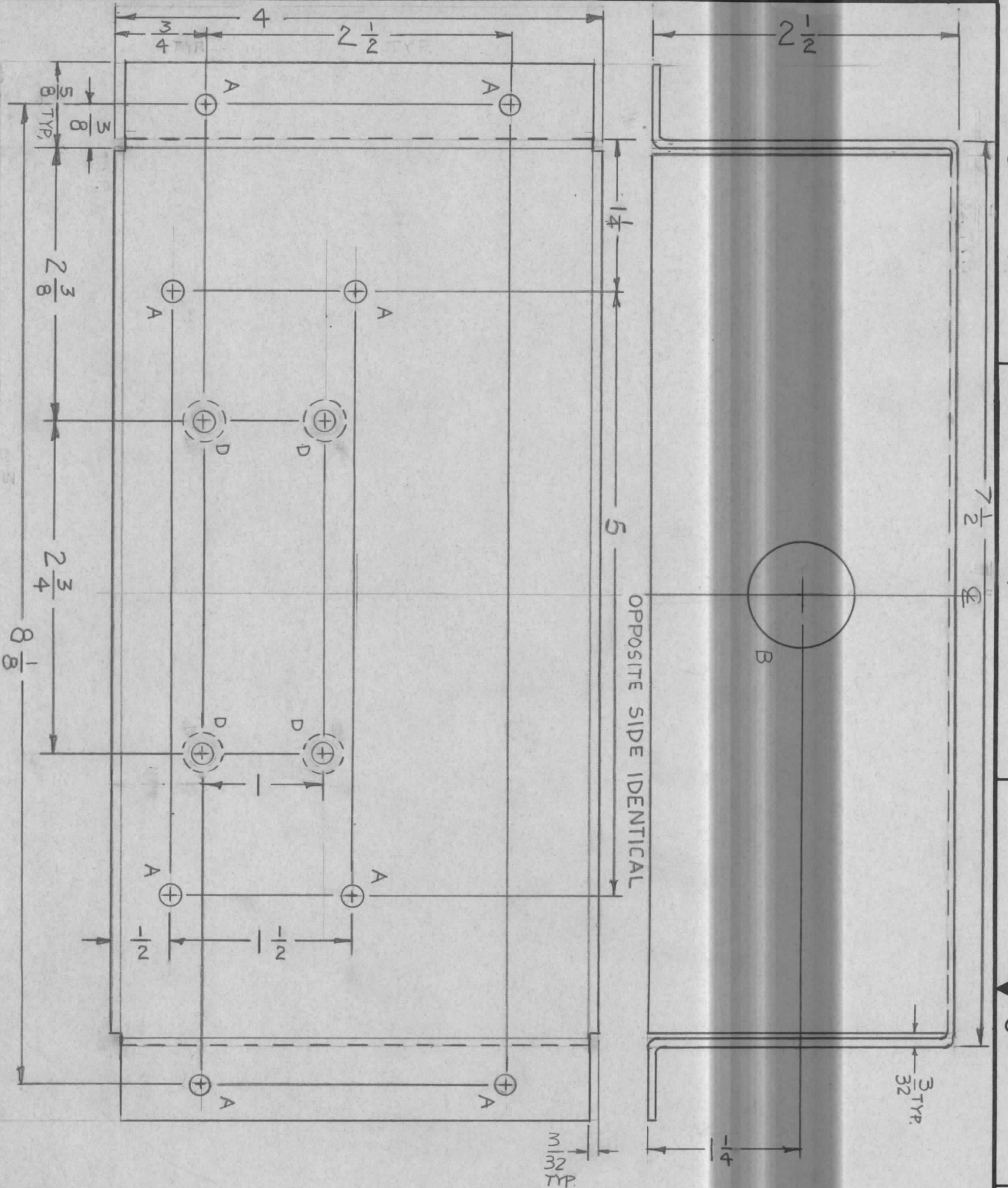


REVISIONS							
ZONE	LTR	DESCRIPTION	DATE	E.M.N. NO	DRAFT	CHKD	APPD
X		EXP. RELEASE	9-13-67		H.G.		
Ø		ORIG. RELEASE FOR PROD.	11-29-67	Ø	R.G.		



HOLES	DESCRIPTION	REQ'D
A	11/64 DIA	8
B	7/8 DIA	2
C	3/8 DIA	2
D	.169 DIA - C'SK Ø2° TO .337 DIA	4

MARK TMC P/M  
1/4 HIGH GOTHIC  
8 W/LATEST REV.  
LETTER.

UNLESS OTHERWISE SPECIFIED:

1. USE MATERIAL THICKNESS FOR MAXIMUM RADIUS ON ALL BENDS
2. ALL ANGULAR BENDS 90 DEGREES
3. REMOVE ALL BURRS AND SHARP EDGES

QTY / UNIT	1	MODEL USED ON	RAK 75-4	ASS'Y NO.	
APPLICATION		CODE	A	5401-451	

DECIMALS	X ± .05	TOLS.	FRACTIONS	1/64
	.XX ± .01		ANGLES	0° .30'
	.XXX ± .005			

NOTICE TO PERSONS RECEIVING THIS DRAWING  
THE TECHNICAL MATERIEL CORPORATION claims proprietary right in the material disclosed hereon. This drawing is issued in confidence for engineering information only and may not be reproduced or used to manufacture anything shown herein without permission from THE TECHNICAL MATERIEL CORPORATION to the user. This drawing is loaned for mutual assistance and is subject to recall at any time.

REQ'D ITEM	PART NUMBER	DESCRIPTION	SYM.
M. STURMER		LIST OF MATERIAL MS-J11214-5	

THE TECHNICAL MATERIEL CORP.  
MAMARONECK, NEW YORK  
CHASSIS, AC

FINAL APPROVAL	DATE	MECH. DES.	DATE	DATE	DATE	DATE
CHECKED	DATE	DRAWN	DATE	DATE	DATE	DATE
SIZE	CODE IDENT. NO.	DWG. NO.	ISSUE			
B	82679	MS5123	Ø			
SCALE	1:1	SHEET	OF			