

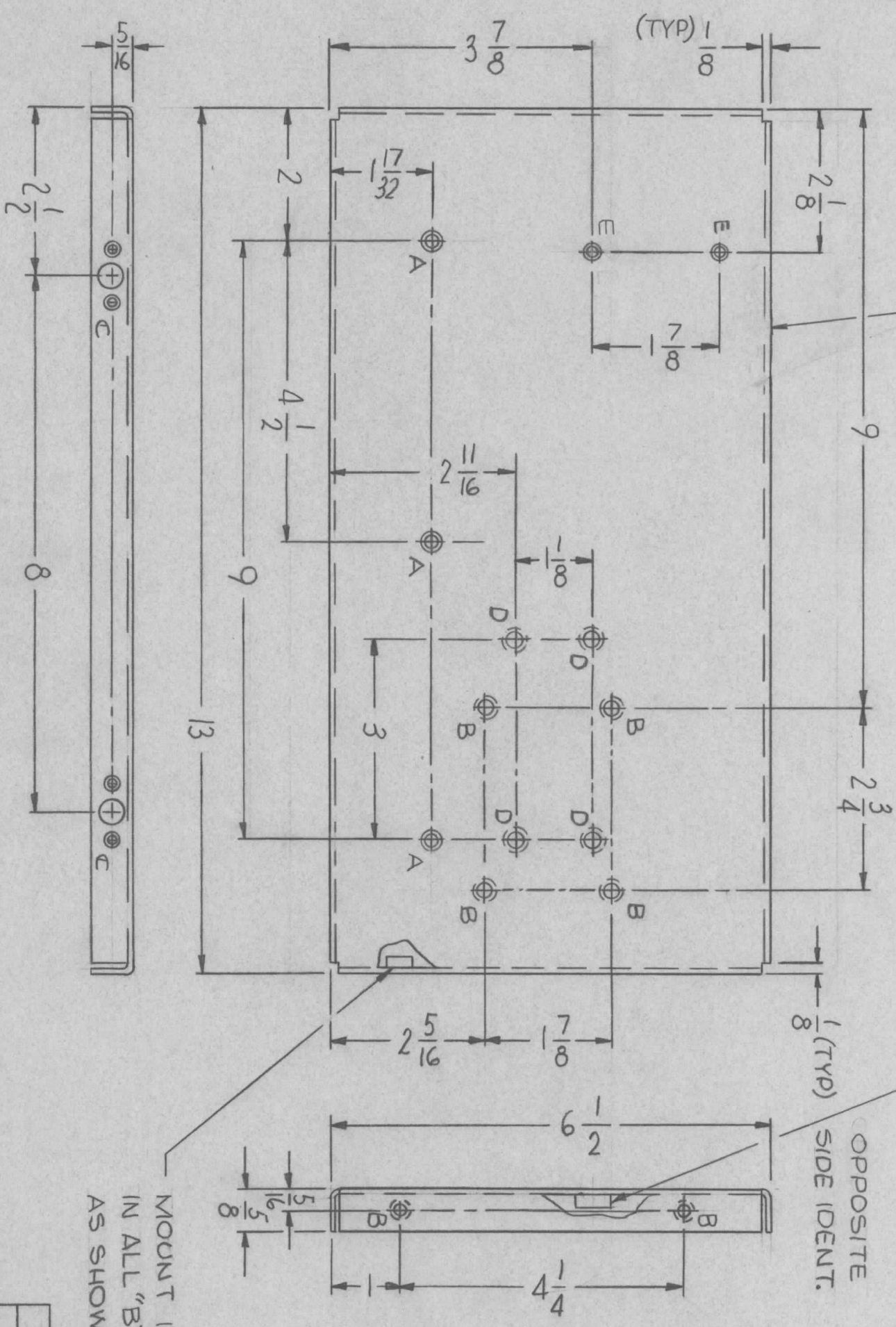
MARK TMC PART/NO. MSS117-  
 1/8 HIGH GOTHIC W/LATEST  
 REVISION LETTER

MOUNT (ITEM 2)  
 IN ALL "D" HOLES  
 AS SHOWN.

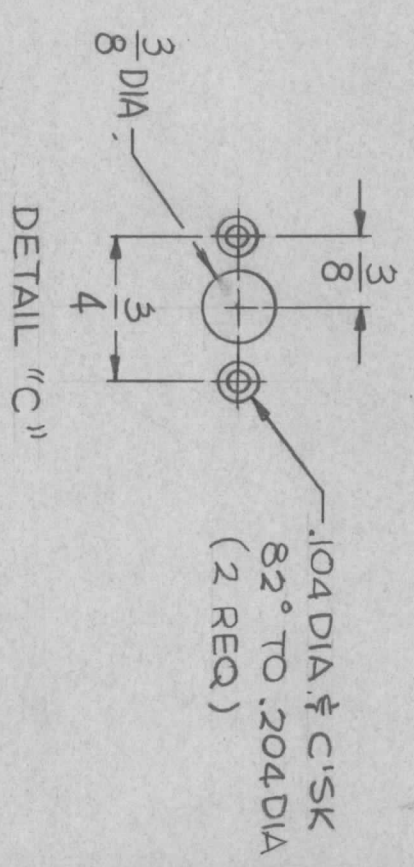
OPPOSITE  
 SIDE IDENT.

MOUNT ITEM 1  
 IN ALL "B" HOLES  
 AS SHOWN.

OPPOSITE SIDE IDENTICAL



HOLE	DESCRIPTION	REQ
A	.169 DIA ± C/SK 82° TO .337 DIA	3
B	.221 TO .224 DIA	8
C	SEE DETAIL	4
D	.250 TO .253 DIA	4
E	.144 DIA ± C/SK 82° TO .284 DIA	2



REQ'D ITEM	PART NUMBER	DESCRIPTION	SYM.
4	NT129-1032-4	NUT, PLAIN, SPLINE	D
8	NT129-832-4	NUT, PLAIN, SPLINE	B

LIST OF MATERIAL

THE TECHNICAL MATERIEL CORP.  
 MAMARONECK, NEW YORK

PLATE, SIDE, LEFT

- UNLESS OTHERWISE SPECIFIED:
1. USE MATERIAL THICKNESS FOR MAXIMUM RADIUS ON ALL BENDS
  2. ALL ANGULAR BENDS 90 DEGREES
  3. REMOVE ALL BURRS AND SHARP EDGES
  4. MOUNT INSERTS AFTER FINISHING

QTY / UNIT	MODEL USED ON	ASS'Y NO.
1EA	SMEA-1, SMEB-1	
1EA	SMEC-1, SMEE-1	

DECIMALS	TOLS.	FRACTIONS	ANGLES
.X ± .05	1/64		
.XX ± .01			
.XXX ± .005	0° .30'		

NOTICE TO PERSONS RECEIVING THIS DRAWING  
 THE TECHNICAL MATERIEL CORPORATION claims proprietary right in the material disclosed hereon. This drawing is issued in confidence for engineering information only and may not be reproduced or used to manufacture anything shown hereon without permission from THE TECHNICAL MATERIEL CORPORATION to the user. This drawing is loaned for mutual assistance and is subject to recall at any time.

ZONE	LTR	DESCRIPTION	DATE	E.M.N. NO	DRAFT	CHKD	APPD
	X	EXP. RELEASE	5.25.67				
		ORIG. RELEASE FOR PROD.	6.2.67				

APPROVAL	DATE	DATE	DATE
MECH. DES.			
ELECT. DES.			
CHECKED			
DRAWN			

SIZE	CODE IDENT. NO.	DWG NO.	ISSUE
B	82679	MSS117	

SCALE 1:2 SHEET OF