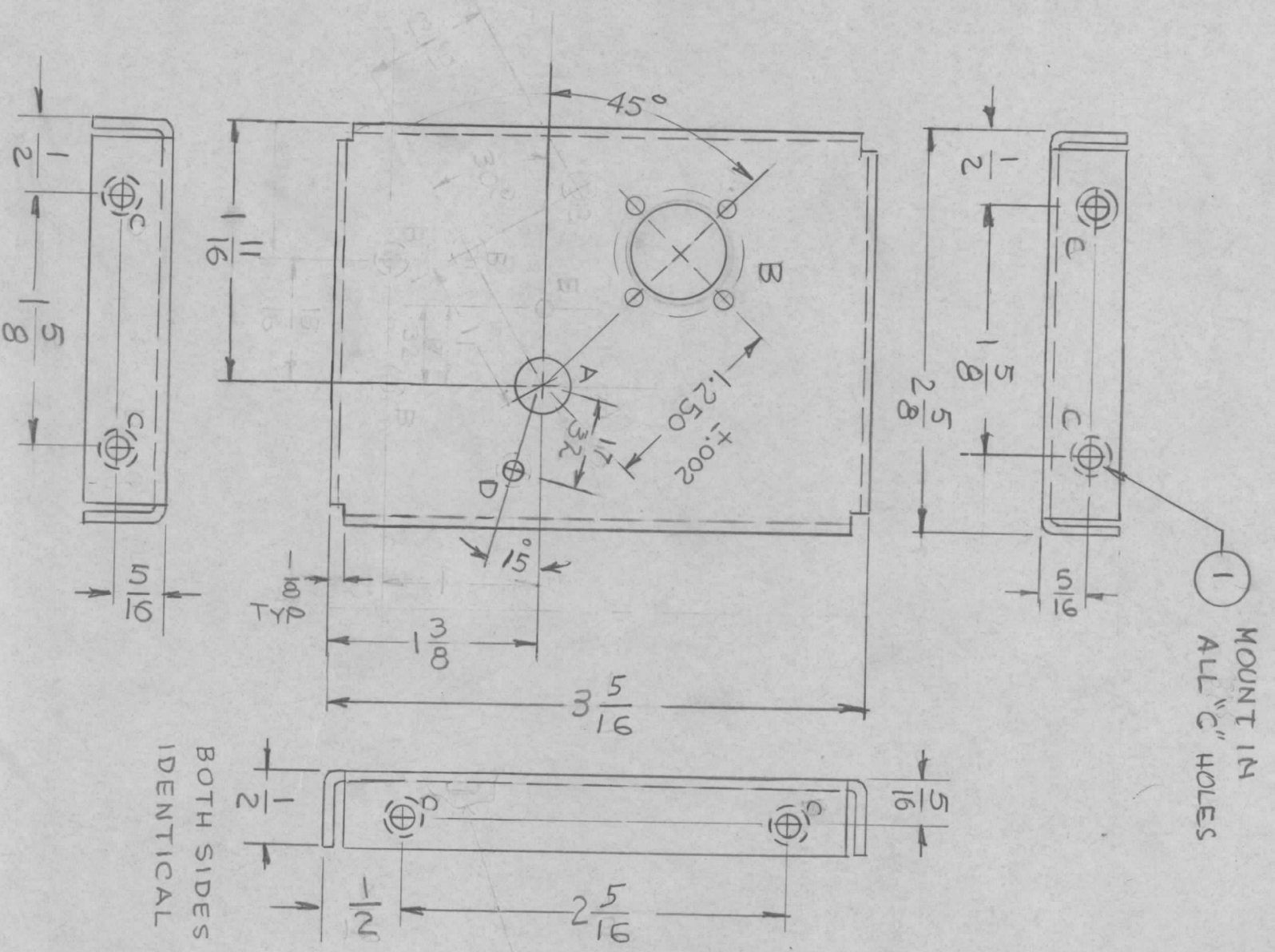


- UNLESS OTHERWISE SPECIFIED:
1. USE MATERIAL THICKNESS FOR MAXIMUM RADIUS ON ALL BENDS
 2. ALL ANGULAR BENDS 90 DEGREES
 3. REMOVE ALL BURRS AND SHARP EDGES
 4. MOUNT INSERTS AFTER FINISHING

NOTES



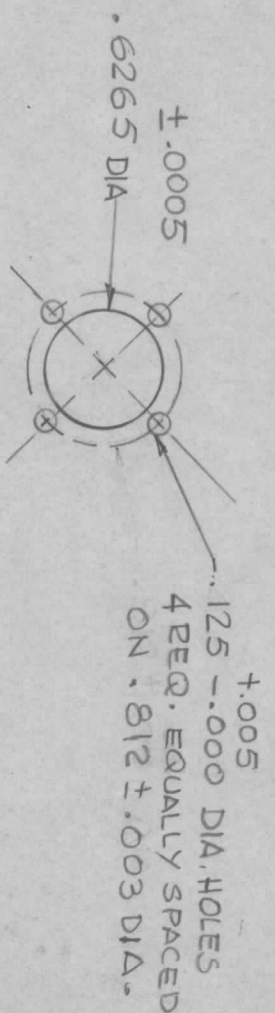
1 MOUNT IN ALL "C" HOLES

BOTH SIDES IDENTICAL

SYM		DESCRIPTION		REVISIONS			
SYM	DESCRIPTION	DATE	E.M.N. NO.	DRAFT	CHKD	APPD	
X	EXP RELEASE	8-19-66	X	GDL			
X1	COMPLETELY REVISED	8-22-66	X1	JBC			
X2	'B' HOLES WERE 9/16 DIA.	8/13/66	-M-	Jc			
X3	4 .161-164 DIA HOLES DELETED	11-18-66	X3				
Ø	ORIGINAL RELEASE FOR PRODUCTION	12/2/66	Ø	CV			

MS 5046

HOLE	DESCRIPTION	REQ.
A	.375 DIA	1
B	SEE DETAIL B	1
C	.191 - .194 DIA	8
D	1/8 DIA	1
E	SEE DETAIL	
F	SEE DETAIL	



DETAIL "B" (REQ.)

REF: LDZ149

REQ'D.	ITEM	PART NUMBER	DESCRIPTION	SYMBOL
4	2	NT129-440-4	NUT, PLAIN, SPLINE	
8	1	NT 129-632-4	NUT, PLAIN, SPLINE	c

MATERIAL		TITLE	
.064 THK ALUMINUM 5052-H32		THE TECHNICAL MATERIEL CORP. MAMARONECK, NEW YORK	
FINISH: 5404 YEL. IRIDITE		PLATE, FRONT	

DRAWN		DATE		FINAL APPROVAL		DATE	
GDL		8-19-66		[Signature]		12/2/66	
CHECKED		11-30-66		[Signature]		12/2/66	
ELECT. DES.		[Signature]		[Signature]		[Signature]	
MECH. DES.		[Signature]		[Signature]		[Signature]	

QTY./UNIT	MODEL USED ON	ASSY. NO.
1	SWCA-3K	BMA129

SCALE 1:1

THE CONTENTS OF THIS DRAWING ARE THE EXCLUSIVE PROPERTY OF THE TECHNICAL MATERIEL CORP. ITS UNAUTHORIZED USE OR REPRODUCTION IN WHOLE OR IN PART IS STRICTLY FORBIDDEN.

MS 5046

REV. LTR.