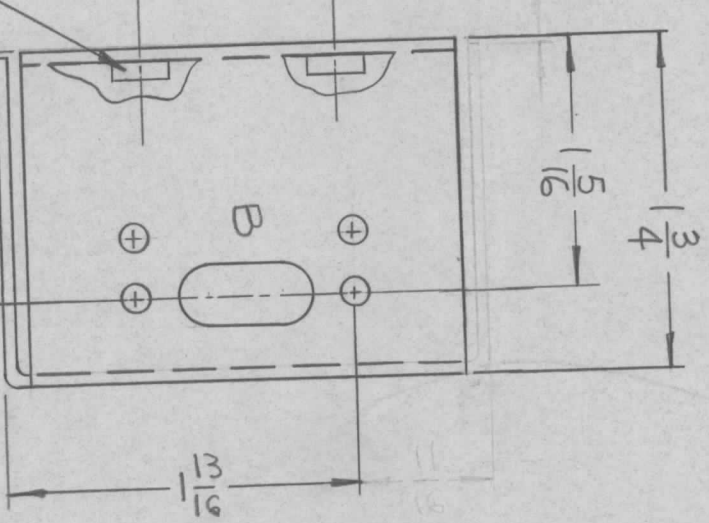
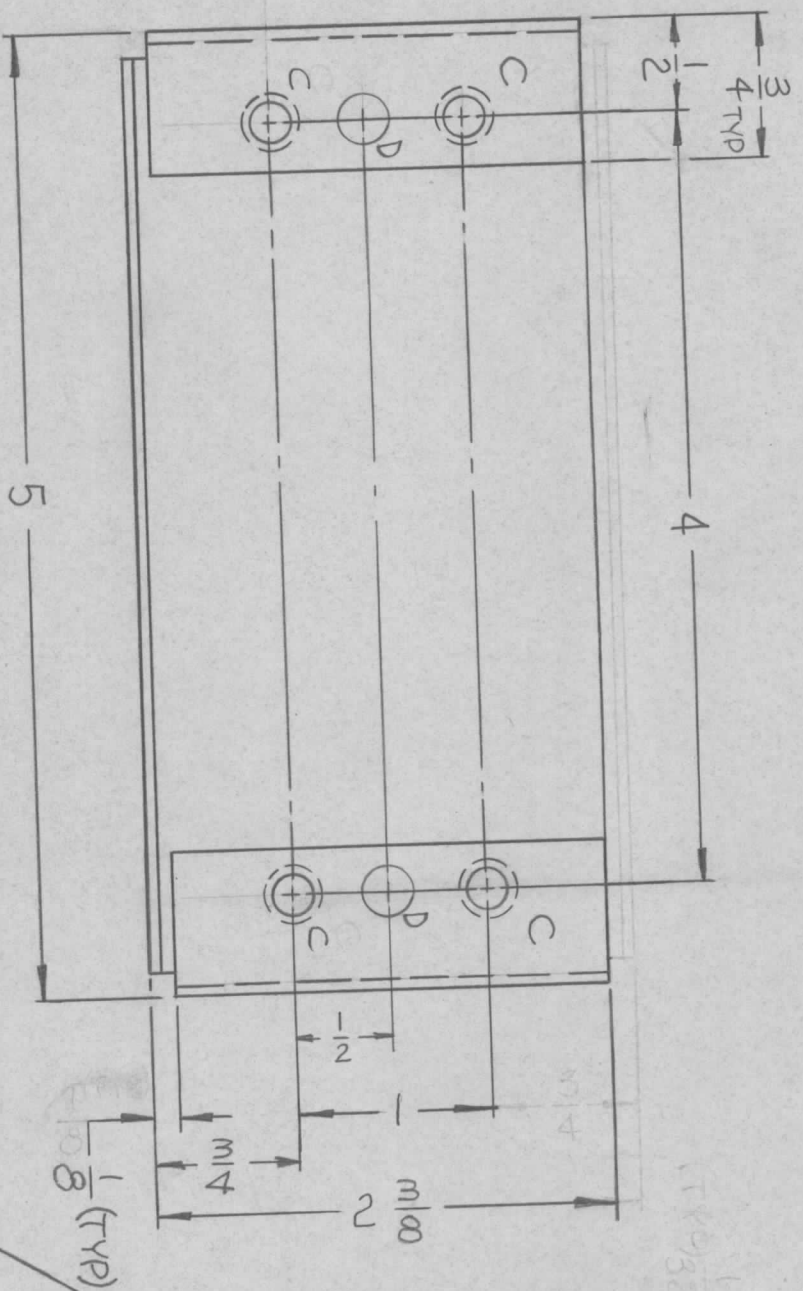
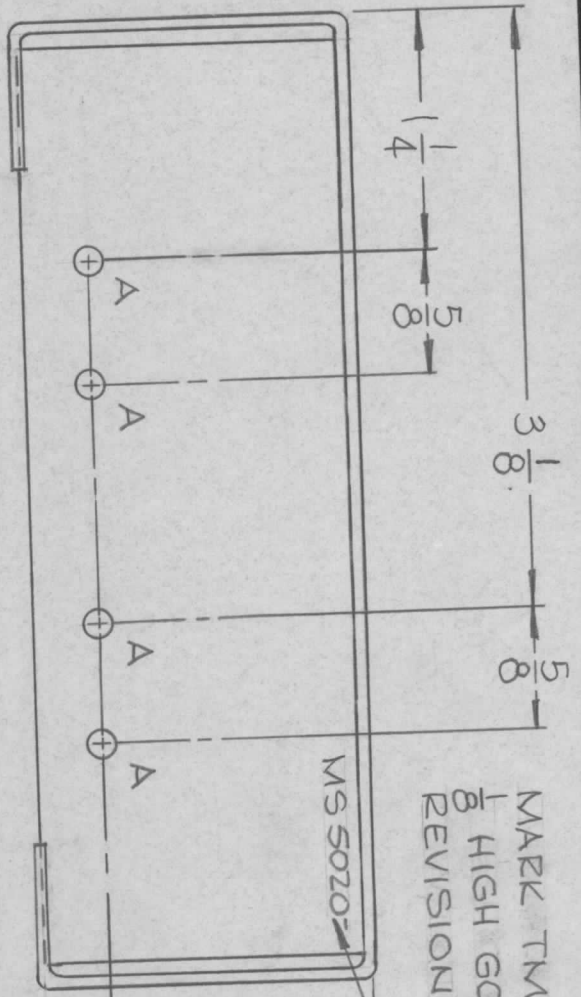


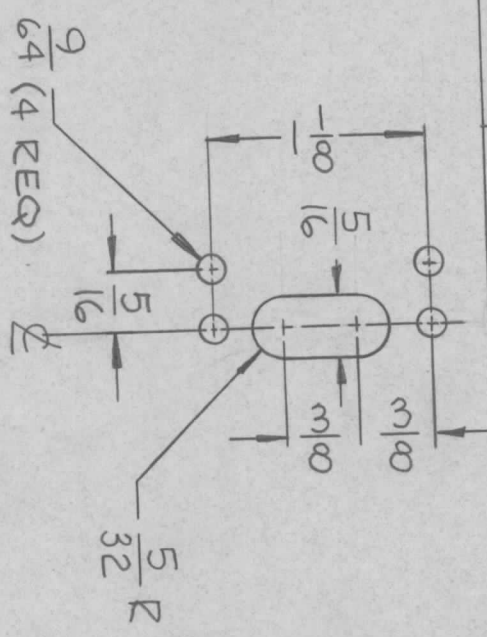
SYM	DESCRIPTION	DATE	E.M.N. NO.	DRAFT	CHKD	APPD
X	EXP RELEASE	7.7.66	-	WFO		
X	ORIGINAL RELEASE FOR PRODUCTION	12.7.66	-	WFO		

MARK TMC PART/NO.
1/8 HIGH GOTHIC W/LATEST
REVISION LETTER

MS 5020



HOLE	DESCRIPTION	REQ'D
A	9/64 DIA	4
B	SEE DETAIL "B"	1
C	.191 - .194 DIA	4
D	1/4 DIA.	2



MOUNT IN ALL "C" HOLES AS SHOWN

REC'D.	ITEM	PART NUMBER	DESCRIPTION	SYMBOL
4	1	NT129-632-4	NUT, PLAIN SPLINE	

REC'D.	ITEM	PART NUMBER	DESCRIPTION	SYMBOL
		F. BUDETTI		
		MATERIAL	.064 ALUMINUM	
			5052-H32	
		FINISH	9404 YEL IRIDITE	

LIST OF MATERIAL
THE TECHNICAL MATERIEL CORP.
MAMARONECK, NEW YORK
CHASSIS, POWER LIGHT

UNLESS OTHERWISE SPECIFIED:

1. USE MATERIAL THICKNESS FOR MAXIMUM RADIUS ON ALL BENDS
2. ALL ANGULAR BENDS 90 DEGREES
3. REMOVE ALL BURRS AND SHARP EDGES
4. MOUNT INSERTS AFTER FINISHING

NOTES

Q'TY./UNIT	1	MODEL USED ON	RAK-110-2	ASS'Y. NO.	
SCALE	1/1	CODE	A		

UNLESS OTHERWISE SPECIFIED DIMENSIONS ARE IN INCHES AND INCLUDE CHEMICALLY APPLIED OR PLATED FINISHES

DECIMALS
X ± .05
.XX ± .01
XXX ± .005

TOLERANCES
FRACTIONS
± 1/64 ANGLES
± 0° 30'

DRAWN	CHECKED	ELECT. DES.	MECH. DES.	DATE	DATE	DATE	DATE
WFO		WFO		7.7.66			

FINAL APPROVAL
MS 5020
SHEET 1
REV. LTR. Ø