

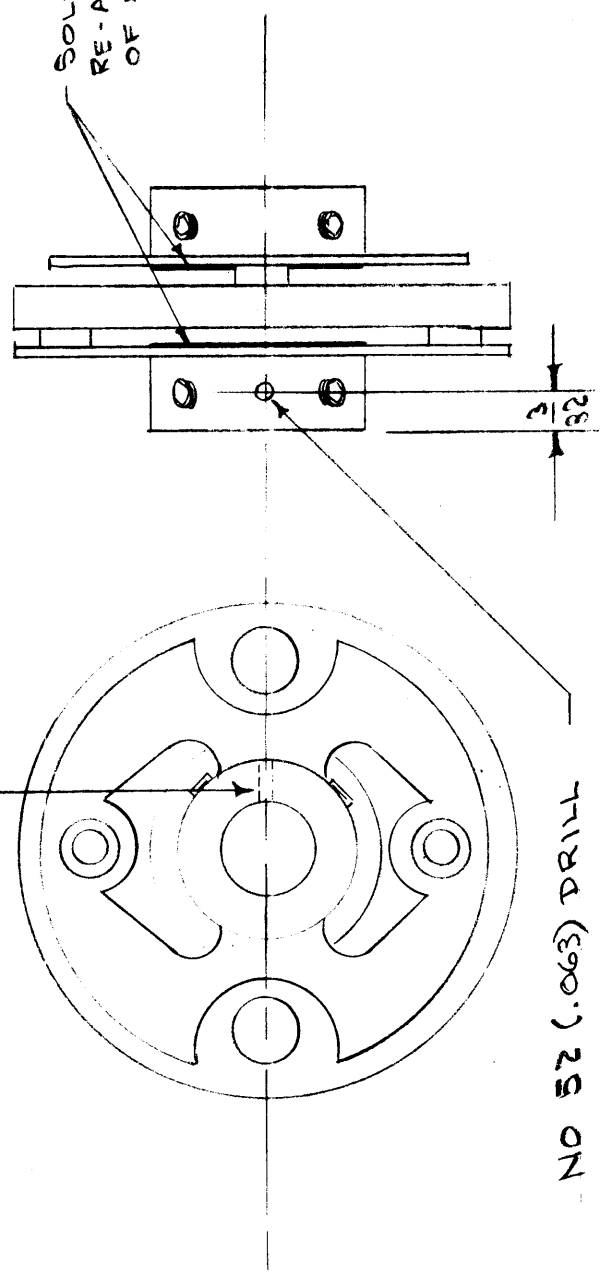
IF IT IS FOUND DESIRABLE TO CHANGE ANY TOLERANCE OR OTHER DETAIL SPECIFIED ON THIS DRAWING NOTIFY THE PURCHASER PROMPTLY.

MAXIMUM ALLOWABLE TOLERANCES HAVE BEEN DETERMINED AND DEVIATIONS WILL BE CAUSE FOR REJECTION. REMOVE ALL BURRS AND SHARP EDGES

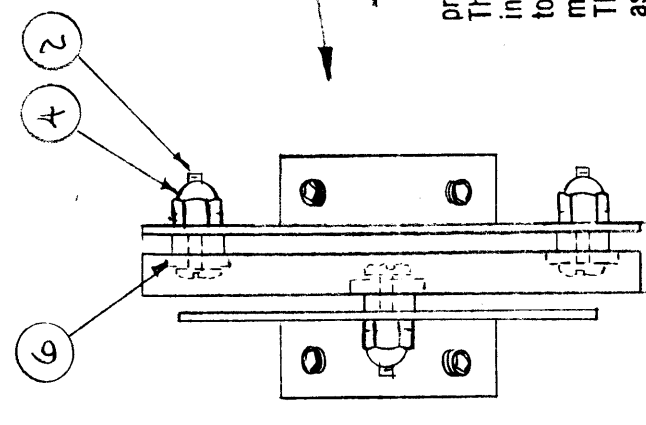
MC-121

- USE MC-104-1
- 1- DRILL PILOT HOLES AS SHOWN.
- 2- REMOVE EXISTING SET SCREWS. REPLACE WITH ITEM 5.
- 3- REMOVE EXISTING RIVETS. REPLACE WITH ITEMS 2-A&B AS SHOWN

NOTE: DRILL PILOT HOLES THRU ONLY ONE SIDE OF COLLAR



SOLDER (ITEM 3) BEFORE RE-ASSY. TO PREVENT TURNING OF HUB.

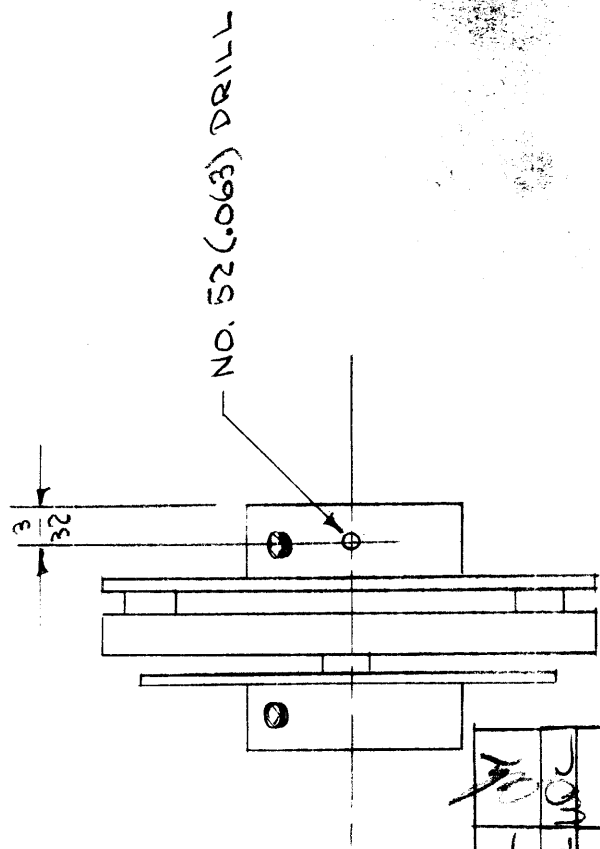


TO PERSONS RECEIVING THIS DRAWING

THE TECHNICAL MATERIEL CORPORATION claims proprietary right in the material disclosed hereon. This drawing is issued in confidence for engineering information only and may not be reproduced or used to manufacture anything shown hereon without permission from THE TECHNICAL MATERIEL CORPORATION to the user. This drawing is loaned for mutual assistance and is subject to recall at any time.

ASSEMBLY

Property of:
THE TECHNICAL MATERIEL CORPORATION
MAMARONECK, NEW YORK



DRI L L I N G

ISSUE ITEM	CHANGED FROM	DATE	CN. NO.	DRAFTS	CHECKER	ENG. APP.
C 2	SOLDER NOTE ADDED	4/9/57	3	K	JHE	
B 1	ITEM 3 WAS L W E O A M R C	1/11/57	2	Q	JHE	
B 2	ITEM 6 ADDED					
B 3	HDWE. ADDED					
A 2	DRILLING CHGD.					
A 1	REDRAWN					

TOLERANCES
DEC. DIM. ±
FRAC. DIM. ±
ANGULAR DIM. ±

SCALE:
DRILL, PUNCH, COMMERCIAL STOCK SIZES AND MANUFACTURERS TOLERANCES ARE NOT INCLUDED.

REQ. ITEM	PART NO.	DESCRIPTION	SYMBOL
A 6	WA-101-1	WASHER, FIBER.	
A 5	AM565-D-6H2	SCREW, HEADLESS SET	
A 4	SM-127-D-4A0	NUT, LOCK	
X 3	BS-100	SOLDER, SOFT	
A 2	SCBS04A08CT	SCREW, MACHINE	
1	MC-104-1	COUPLING, FLEXIBLE	

THE TECHNICAL MATERIEL CORP.
MAMARONECK, NEW YORK

COUPLING, MODIFIED
TAC-1

C.D.D. *ARB* *WJ*
DRAWN *ARB* ELEC. DES. APP. MECH. DES. APP.
JHE *ARB* *WJ*
CHECKED *ARB* FINAL APPROVAL
MC-121

REG. PER UNIT	2	TAC-1	132	A-423	1-25-54
MODEL		PROJECT NO.		ASSY. NO.	DATE

USED ON