

IF IT IS FOUND DESIRABLE TO CHANGE ANY TOLERANCE OR OTHER DETAIL SPECIFIED ON THIS DRAWING NOTIFY THE PURCHASER PROMPTLY.

MC-106 A

MAXIMUM ALLOWABLE TOLERANCES HAVE BEEN DETERMINED AND DEVIATIONS WILL BE CAUSE FOR REJECTION. REMOVE ALL BURRS AND SHARP EDGES

REQ. PER UNIT

USED ON

MODEL

PROJECT NO.

ASS'Y. NO.

DATE

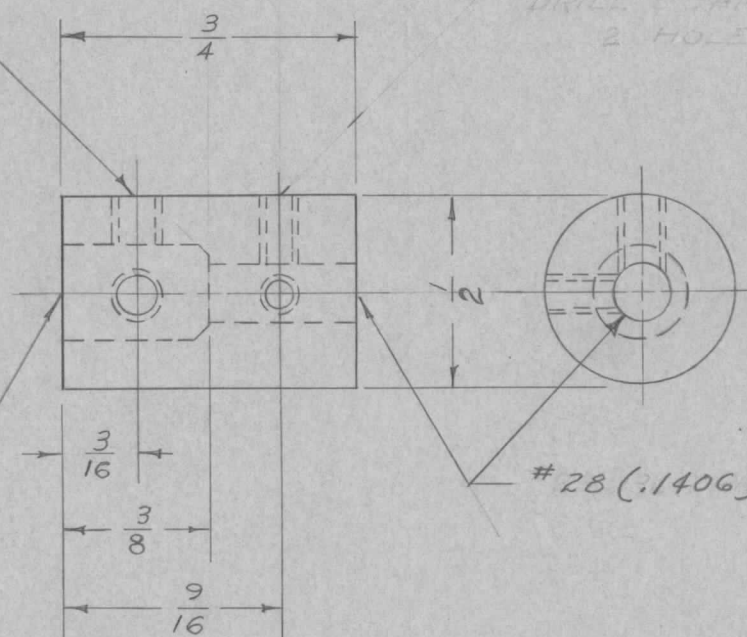
2 1005 8-1-52

DRILL & TAP 6-32  
4 HOLES

DRILL & TAP 1-20  
2 HOLES

# F(.257) DRILL

# 28 (.1406) DRILL



REQ.	ITEM	PART NO.	DESCRIPTION	SYMBOL
	1/2	ROD	THE TECHNICAL MATERIEL CORP.	
		STOCK SIZE	MAMARONECK. NEW YORK	
		BRASS	DRIVE SHAFT COUPLING	
		MATERIAL		
		WEIGHT PER PC.		
		FREE TURNING		
		TYPE & TEMPER		
		HEAT TREAT. SPEC.		
		FINISH & SPEC. NO.		

ISSUE	ITEM	CHANGED FROM	DATE	CN. NO.	DRAFTS	CHECKER	ENG. APP.
A	3	(2) 6-32 WAS (2) 6-32 - 2 WERE # F WAS 1/4 4-40 TAP # 28 WAS # 29 ON # 29 DRILL	9/9/58	1	auc		
#	#	REDRAWN NO CHANGE	8-23-55	#	oss	we	

TOLERANCES		SCALE
ALL OTHERS	DEC. DIM. ± .0015 FRAC. DIM. ± 1/64 ANGULAR DIM. ±	DRILL, PUNCH, COMMERCIAL STOCK SIZES AND MANUFACTURERS TOLERANCES ARE NOT INCLUDED.

1005  
8-1-52  
8-23-55  
8-1-52  
MC-106 A